

Continental Access

A Napco Security Group Company



V2.6.19 Installation on a Workstation Procedure

Revision C

Date : 11/26/2008

CardAccess® 3000 



CA3000 Software Installation Procedure

Continental Access and CardAccess3000 are registered trademarks of Napco Security Group
Microsoft® is a registered trademark of Microsoft Corporation.
Windows® is a registered trademark of Microsoft Corporation.
CardAccess® is a registered trademark of Napco Security Group

Document Title V 2.6.19 Installation on a Workstation

This document contains proprietary information of Continental Access. Unauthorized reproduction of any portion of this manual without the written authorization of Continental Access is prohibited. The information in this manual is for informational purposes only. It is subject to change without notice. Companies, names and data used in examples herein are fictitious unless otherwise noted. Continental assumes no responsibility for incorrect information this manual may contain.

Continental Access
355 Bayview Dr.
Amityville, NY 11701
Phone (631) 842-9400
Fax (631) 842-9135

Web: <http://www.cicaccess.com>

License Agreement

NOTICE TO USER: THIS PACKAGE IS A CONTRACT. BY OPENING THIS SEALED PACKAGE YOU ACCEPT ALL THE TERMS AND CONDITIONS OF THIS AGREEMENT.

Use of the Software. You may install and use the software only for the purpose intended.

Copyright. You may not duplicate or copy the software or documentation, except that you may make one backup copy of the software. All copies must bear copyright notices contained in the original copy.

Limited Warranty. Continental Access warrants that the software will perform substantially in accordance with the printed documentation when correctly installed on a properly configured computer for which it is intended. Continental Access warrants the discs upon which this product is recorded to be free from defects in materials and workmanship under normal use for a period of 1 year from the date of purchase. During the warranty period Continental Access will replace discs, which prove to be defective.

Important Information - Must be read before installing software.

- 1) Version 2.6.19 installation is accomplished using 2 CDs, unlike version 2.6.19B which requires 1 CD to complete the install. It's very important to identify the version you are using. Version 2.6.19 has one CD labeled PROGRAM DISK and one CD labeled SUPPORT DISK. Version 2.6.19B has one CD labeled DISK1 and one CD labeled DISK2.
- 2) The installation of a CA3000 Workstation requires a valid V2.6 security key/license on the CA3000 Server/Host. The security key/license must support 5 or more workstations. If your security key displays "max workstations =1", no workstations are supported.
- 3) During the installation of a workstation, you will be prompted to enter the IP address of the CA3000 Server/Host. Before starting this installation, have the IP address ready to enter.
- 4) The workstation you are installing communicates to the CA3000 Server/Host via a network. It is very important to turn off all firewalls on the CA3000 Workstation and the CA3000 Host. To assure proper communications to the CA3000 Server, from the Workstation, you must be able to ping the CA3000 Server from the CA3000 Workstation. You must be able to ping it by IP address and Host name. If unable to ping by IP and hostname, the CA3000 Workstation will not communicate properly with the host.
- 5) If you have any previous versions of CardAccess installed, you must un-install them prior to installing this software.

CA3000
Workstation PC
Recommendations

	Workstation-Event Viewing Only	Workstation-Event Viewing+Badging	Workstation-Event Viewing+DVR and/or Napco Integration, Scripting or Dynamic Maps
Processor	Pentium Core2 Duo, 1066MHz, 2.2GHz	Pentium Core2 Duo, 1066MHz, 2.2GHz	Pentium Core2 Duo, 1066MHz, 2.2GHz
Ram	256 MB	512 MB	1GB
Hard Drive	80GB	80GB	160GB
USB Ports	1	2	2
Serial Ports	N/A	N/A	N/A
Parallel Ports	1	1	1
Mouse	2 Button PS2 / USB	2 Button PS2 / USB	2 Button PS2 / USB
Monitor	17" Flat Panel	17" Flat Panel	17" Flat Panel
CD/DVDROM	48x/16x	48x/16x	48x/16x
CDRW/DVDR	24x/4x Optional	24x/4x Optional	24x/4x Optional
Sound	Optional	Optional	Optional
Network Card			
Operating System	Win XP Pro w/SP2 or Win 2003	Win XP Pro w/SP2 or Win 2003	Win XP Pro w/SP2 or Win 2003
Database	N/A	N/A	N/A
Backup	N/A	N/A	N/A
Notes:		For large corporations and/or Colleges, a frame grabber capture card and high-end digital video camera is recommended on this badging station. Depending on the amount of photo's needed to be taken per-day, additional RAM may be required.	Depending on the number of DVR's being accessed, additional RAM and/or processor upgrade may be required.

Scope

This document contains information regarding the installation of CA3000 V2.6 Workstation. This procedure includes the installation of the EPI Badging3000. It is recommended to install the Badging3000 on a workstation. If you choose not to install the Badging3000 during this install, some of the following steps/screens will be different.

InstallShield Wizard

If auto start is enabled on your system, the **CardAccess 3000 Version 2.6 Setup** screen will display after inserting the CA3000 CD in the CD-ROM drive (Refer to Figure 2). If Figure 2 displays, skip ahead to the steps following Figure 2. If nothing happens after inserting the CA3000 CD in the CD-ROM, continue with the next steps.

Note: If auto start is not enabled on your system, follow the steps below to execute the program.

- a. Click the **Start** menu on your PC, and then click on the **Run** menu option. You will see the 'Run' dialog box.
- b. In the 'Run' dialog box, click the white space of the **open** control, and type in **D:\bin\Launch.exe** (Refer to Figure 1).

Note: D represents CD-ROM drive letter. This letter will be different depending on the drive letter of your CD-ROM.

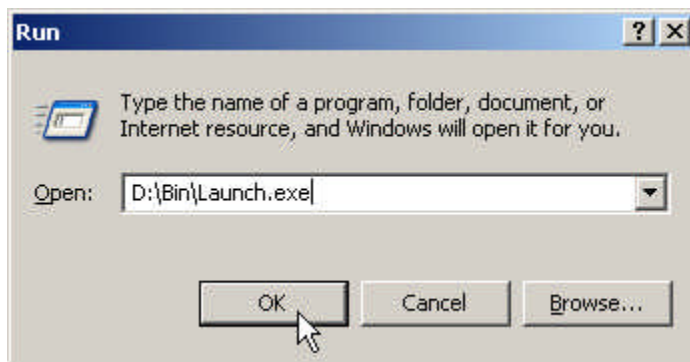


Figure 1.

Click on **OK** in the 'Run' dialog.

The **CardAccess 3000 Version 2.6 setup** screen will display (refer to Figure 2).



Figure 2.

Click on the **Install CardAccess Workstation** button.

Microsoft .NET Framework Installation

The installation of CardAccess3000 requires **Microsoft .NET Framework 3.0**. If this is not currently installed, the CA3000 installation process will install it (refer to figure 3). If this is already installed on the computer, the installation process will skip to **CardAccess3000 Setup** (skip ahead to the CardAccess 3000 Setup).

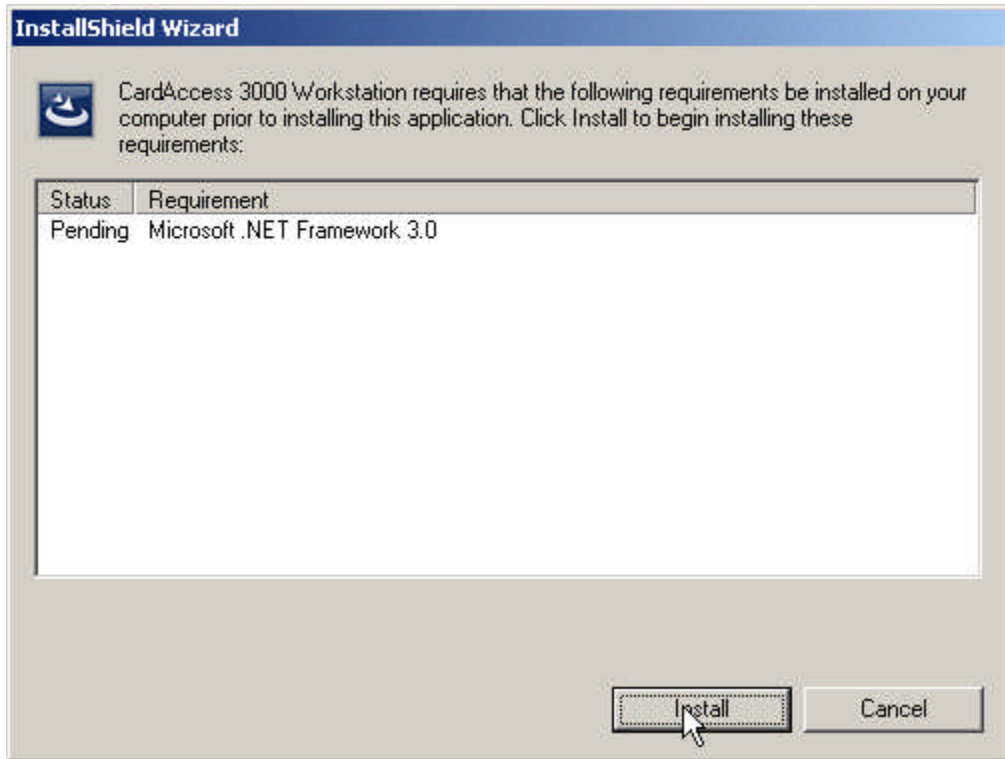


Figure 3.

Click on **Install** to begin the installation of the .NET Framework 3.0. After the installation begins, a progress bar will display while the installation is occurring (Refer to Figure 4).



Figure 4.

CardAccess 3000 Setup

The CardAccess 3000 **InstallShield Wizard** screen will display for a short period while CardAccess 3000 is preparing to install (Refer to Figure 5).

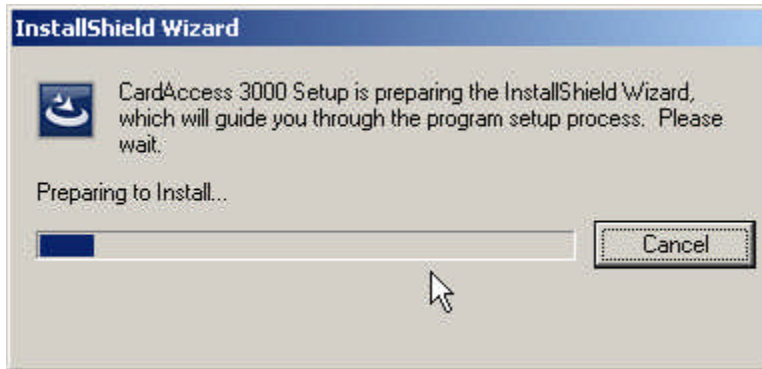


Figure 5.

After the completion of the CardAccess 3000 InstallShield wizard, the **Welcome to CardAccess 3000 Workstation setup program** screen displays (Refer to Figure 6).

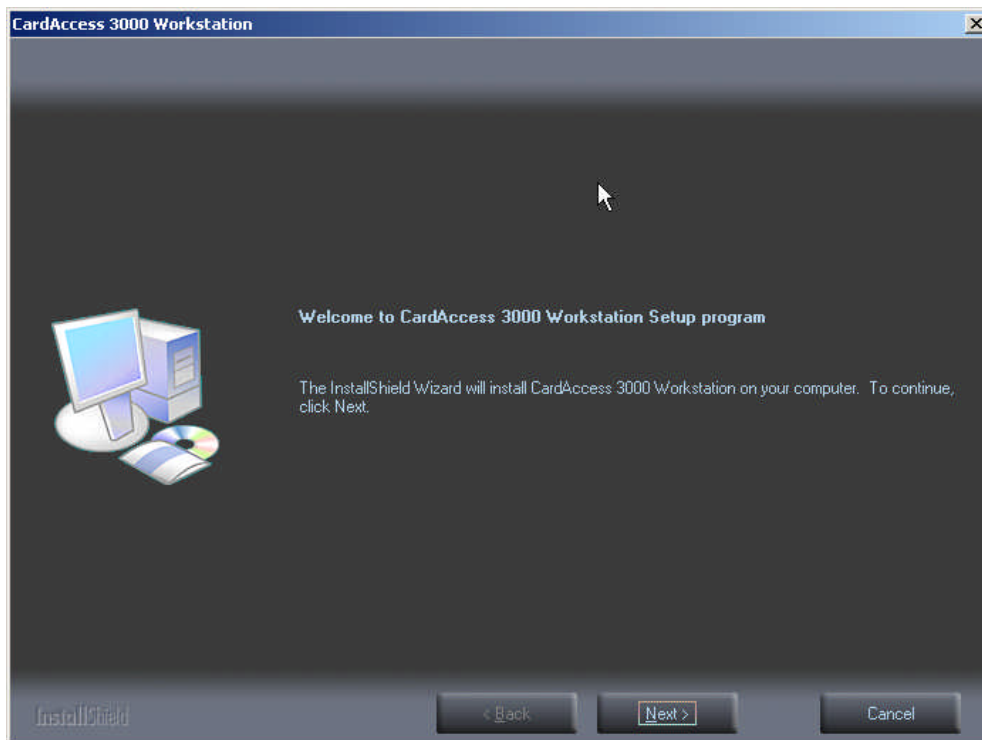


Figure 6.

Click **Next**. The **Select CardAccess Destination Folder** screen will display (Refer to Figure 7).

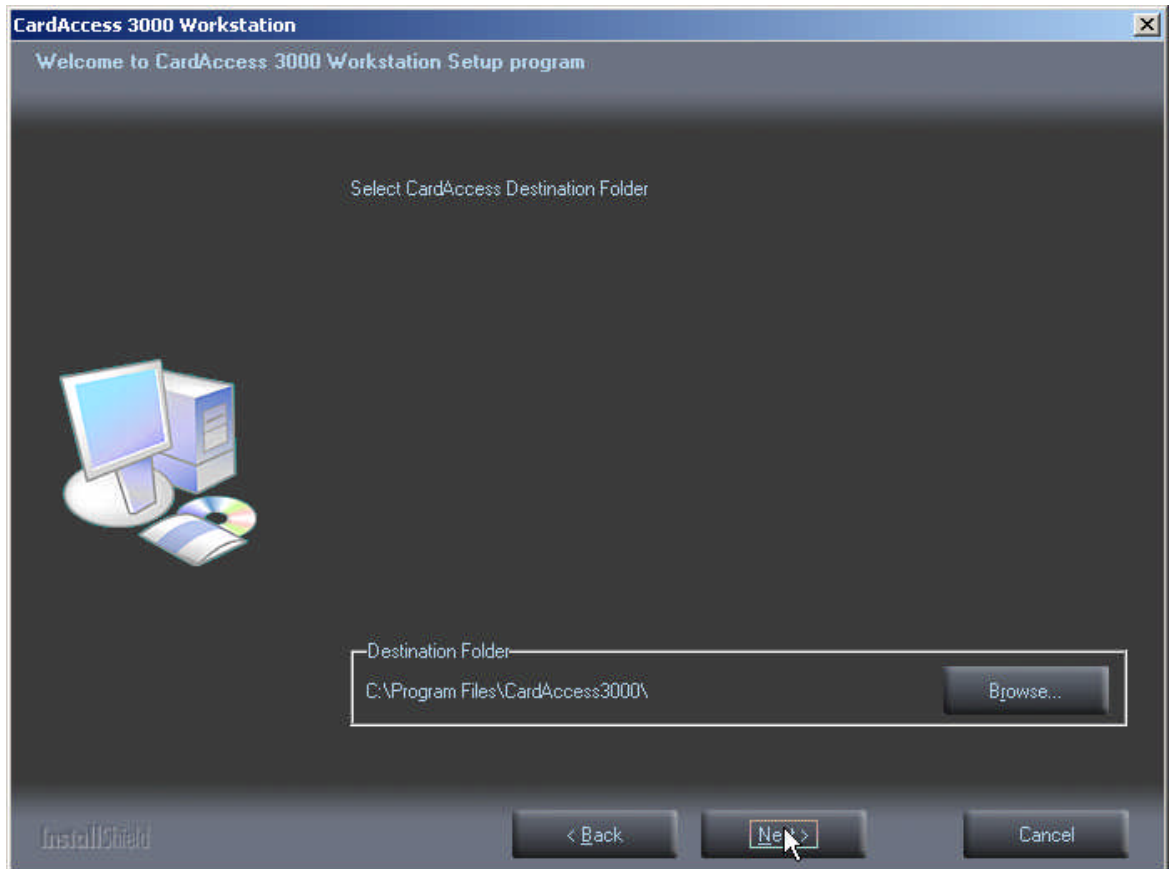


Figure 7.

The default path will display. If you are installing CardAccess 3000 to a different path, click the **Browse** button and select the path.

NOTE: CardAccess 3000 must be installed under a Program Files folder. It is highly recommended to use the default path.

Click **Next**. The **Select Additional CardAccess components** screen will display (Refer to Figure 8).

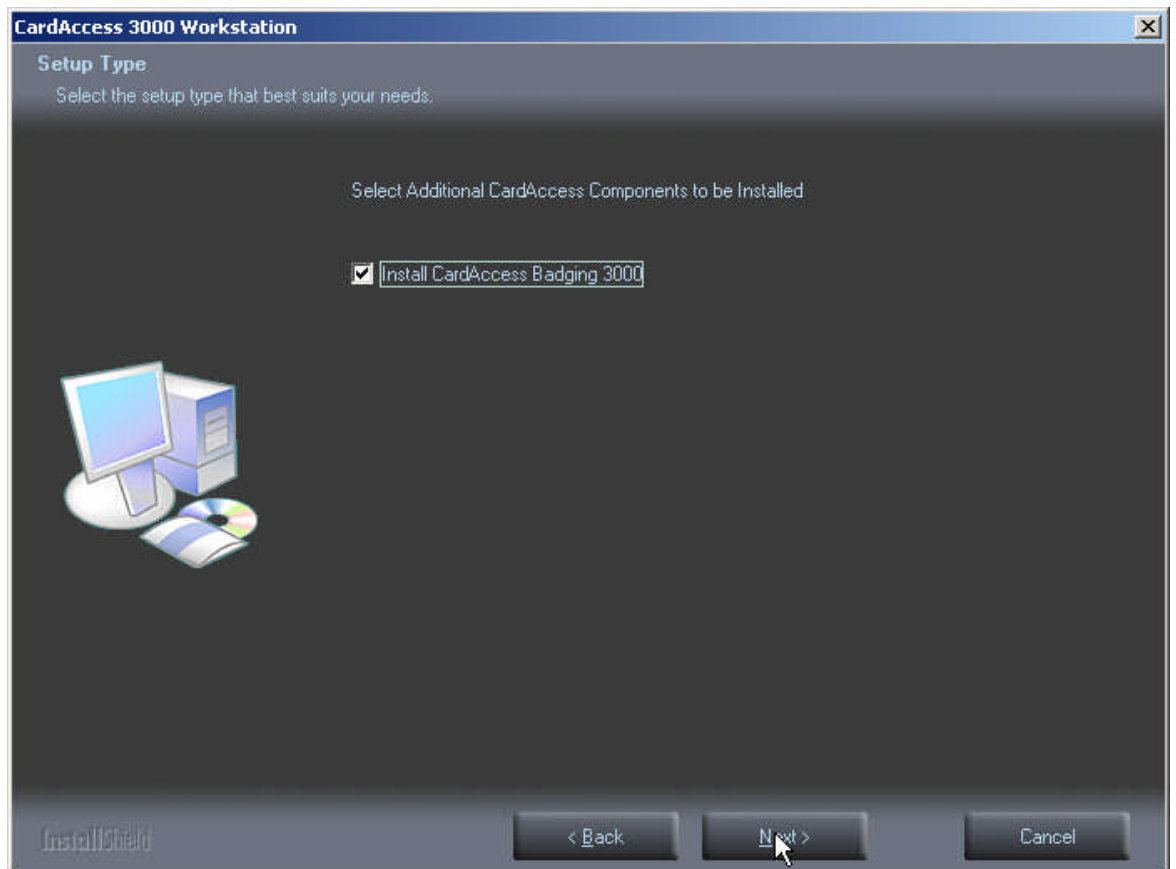


Figure 8.

Select the **Install CardAccess Badging 3000** option. NOTE: It is recommended to install Badging 3000 on a workstation, not a CardAccess 3000 host.

Click **Next**. The **Current Settings** screen will display (Refer to Figure 9).

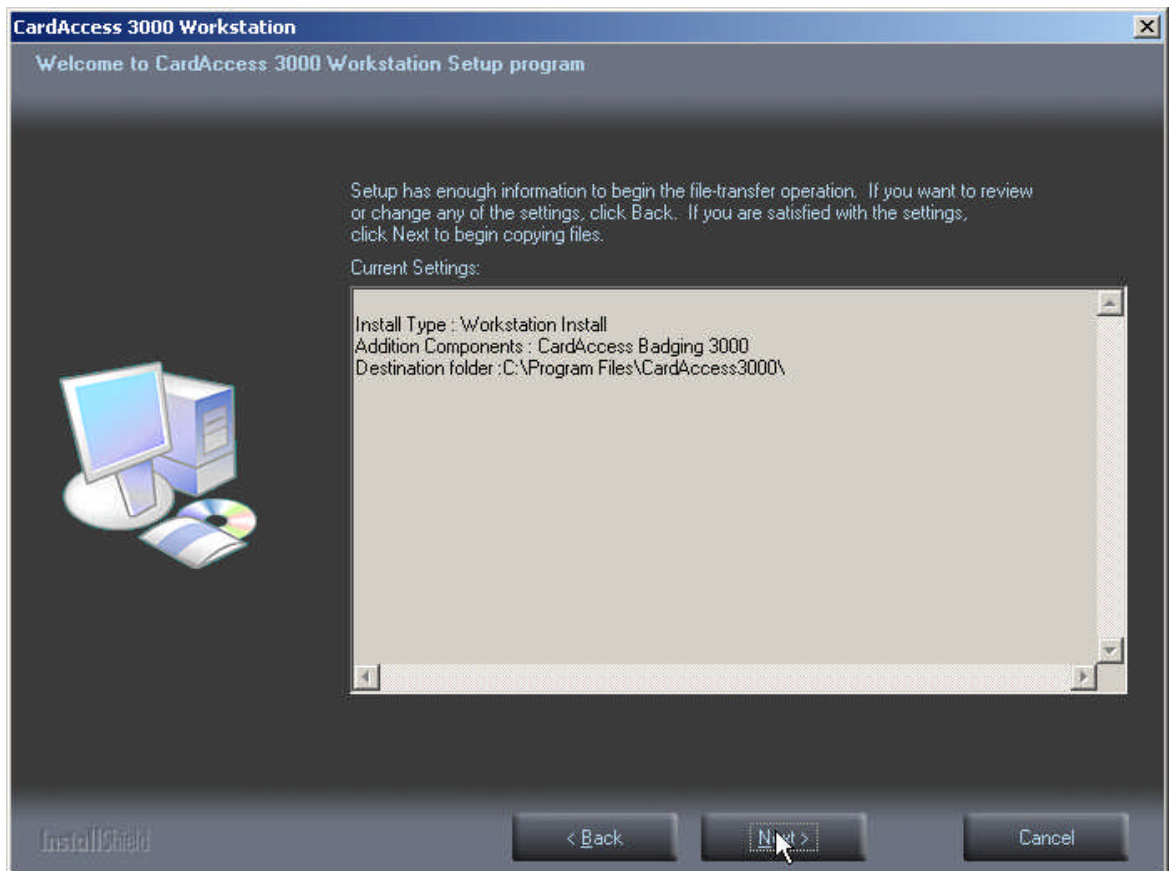


Figure 9.

After reviewing the current settings, click **Next**. A progress bar will display while the CardAccess 3000 is installing (Refer to Figure 10).

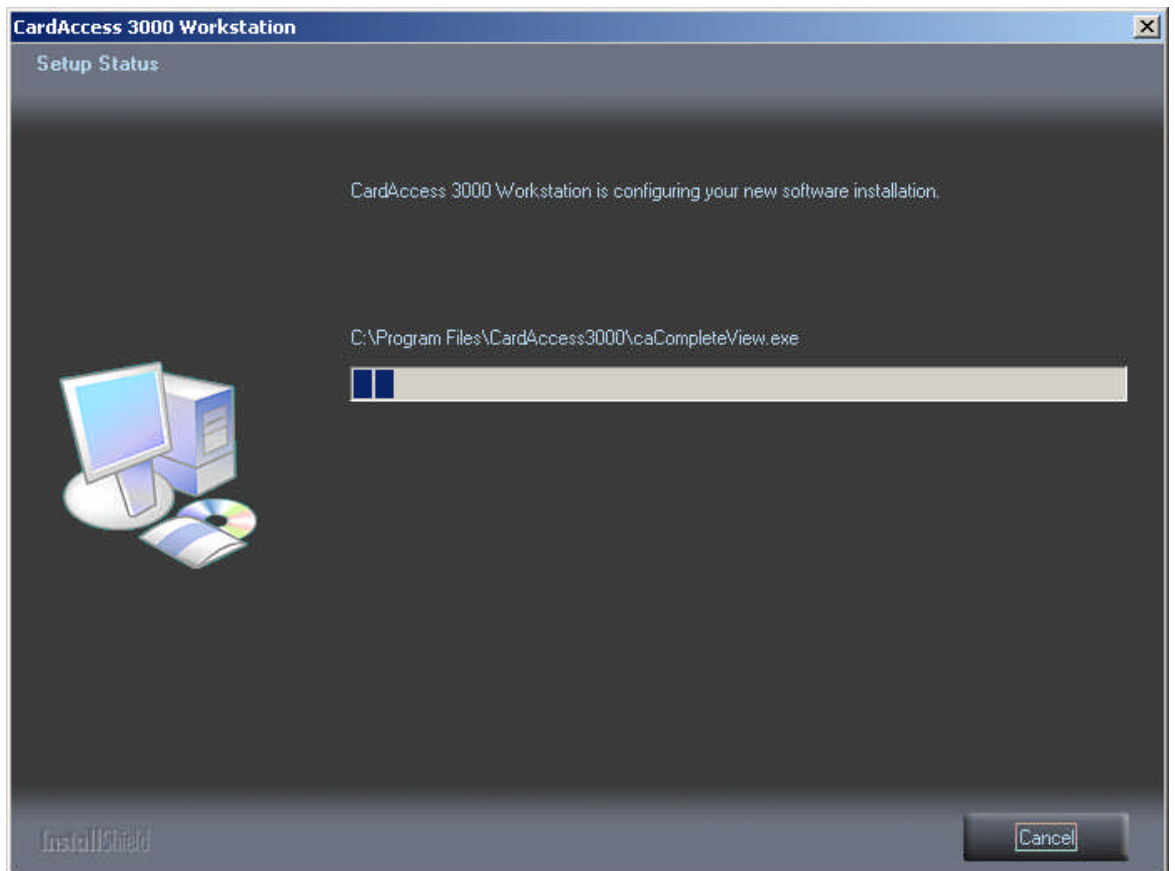


Figure 10.

After the completion of the CardAccess 3000 installation, the **CardAccess 3000 Client Connection Utility** will display (Refer to Figure 11).

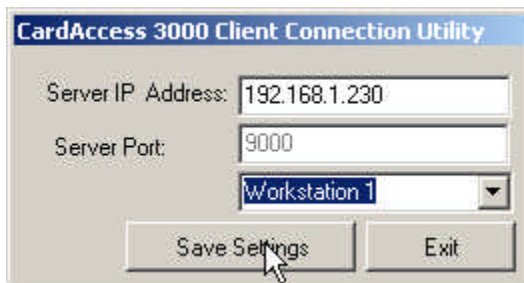


Figure 11.

Enter the **Server IP Address** (This is the IP address of the CardAccess 3000 Server/Host). The Server Port setting should be 9000 by default. Next, select a unique workstation number. Click **Save Settings**. The **Settings saved Successfully** dialog box will display (Refer to Figure 12).



Figure 12.

Click **OK** to close the dialog box in Figure 12. Click **Exit** to close the CardAccess 3000 Client Connection Utility screen. The **Badging 3000 Installation** screen will display (Refer to Figure 13).

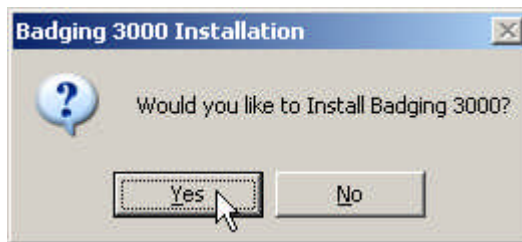


Figure 13.

Click **Yes** to install **Badging 3000**. A dialog box will display prompting you to insert Disk 1 (CD1) in before the computer reboots at the end of the installation (Refer to Figure 14). The Badging 3000 installation occurs at the end of the installation, after the computer reboots. The files needed are on Disk 1 (CD-1).



Figure 14.

SQL 2005 Client Tools Installation

Click **OK**. The **Setup Needs The Next Disk** screen will display. You will be prompted to insert Disk 2 (CD-2) (Refer to Figure 15).

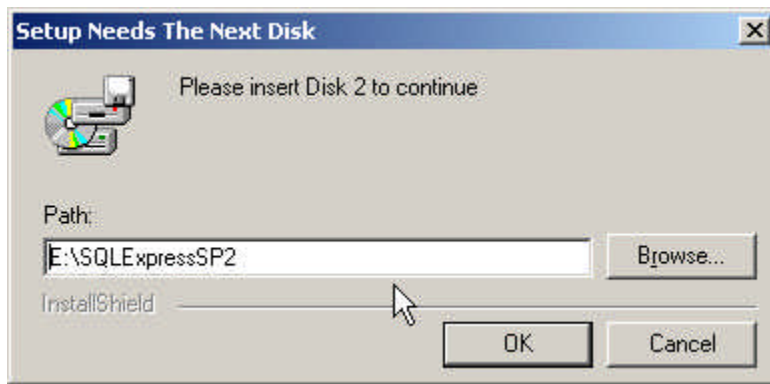


Figure 15.

Remove Disk 1 (CD-1) from the CD tray, and insert Disk 2 (CD-2). NOTE: If a Windows dialog box displays (dialog box will have 4 icons on it), click **Cancel**.

Click OK to start the installation of the SQL Express 2005 support files. During the installation of SQL Express 2005 support files, multiple setup screens will display along with Figure 16. This installation process will take a few minutes.

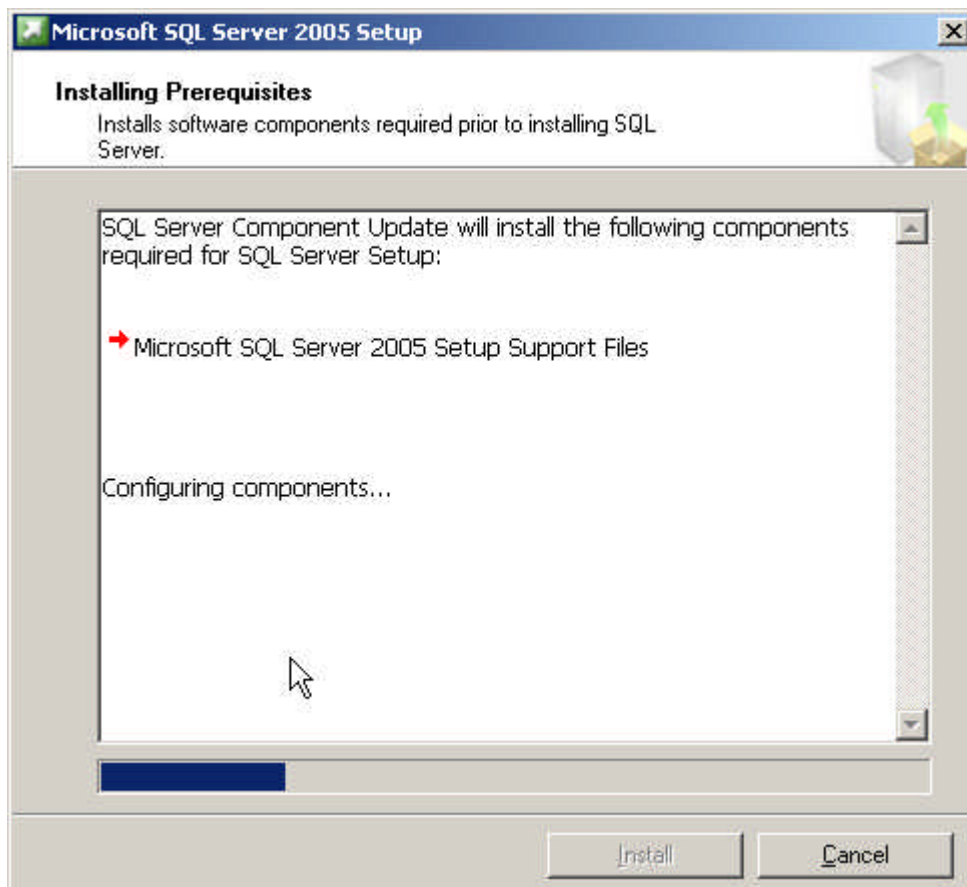


Figure 16.

At the completion of the SQL Express 2005 support files installation, the **Readme Information** screen will display (Refer to Figure 17).

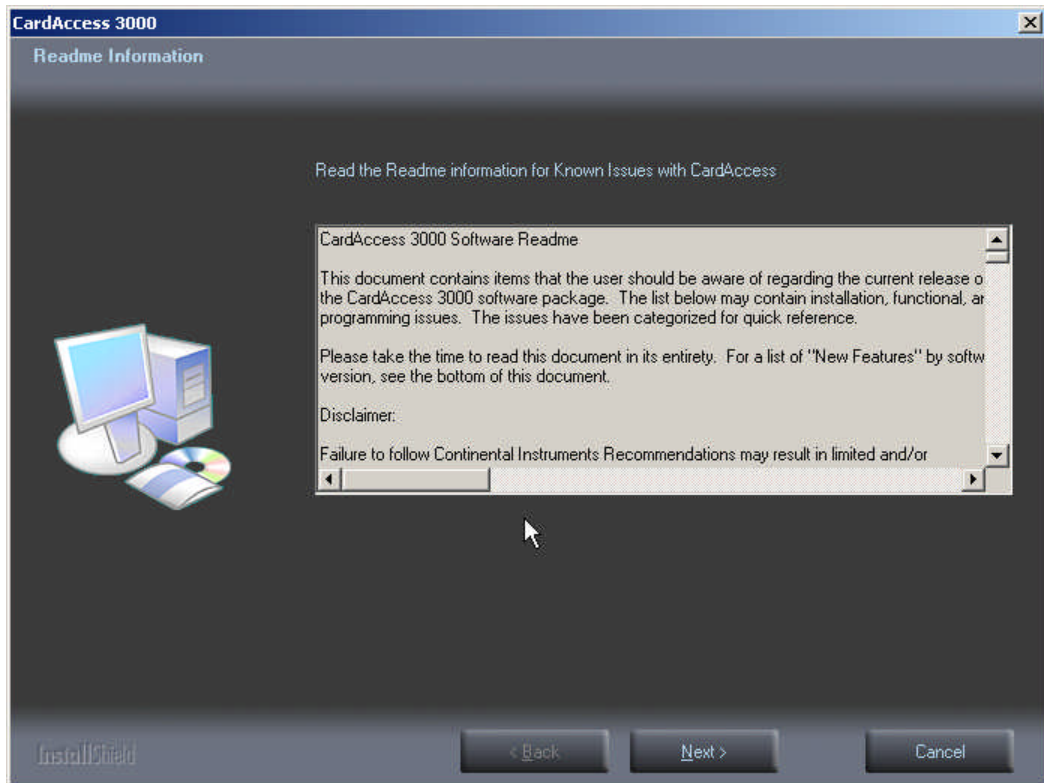


Figure 17.

After reviewing the Readme Information, Click **Next**. The **InstallShield Wizard Complete screen** will display (Refer to Figure 18).

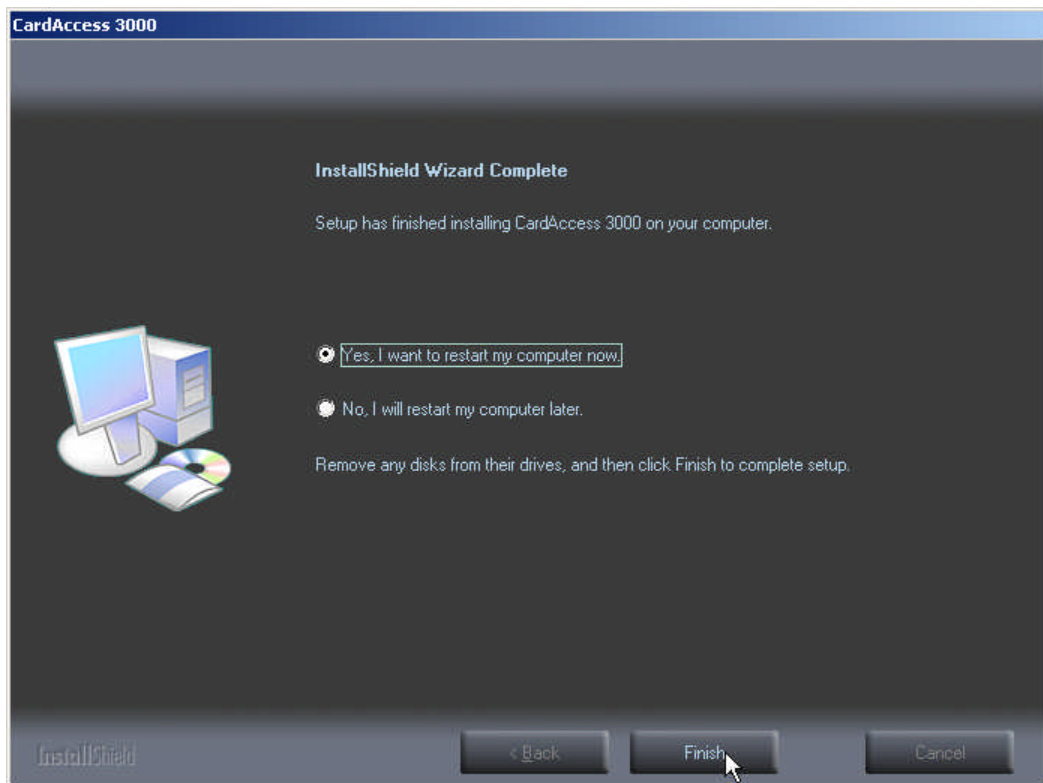


Figure 18.

Verify the **Yes, I want to restart my computer now** option is selected. This should be selected by default.

VERY IMPORTANT : If you selected to install Badging 3000, you must insert disk 1 (CD-1) before you click **Finish**.

Click **Finish**. The computer will restart.

If you didn't select to install the Badging 3000, the installation is complete after the computer reboots. If you inserted disk 1 (CD-1) before the reboot, the **Welcome to the InstallShield Wizard for EPI Builder Run-Time 6** screen will display (Refer to Figure 19).

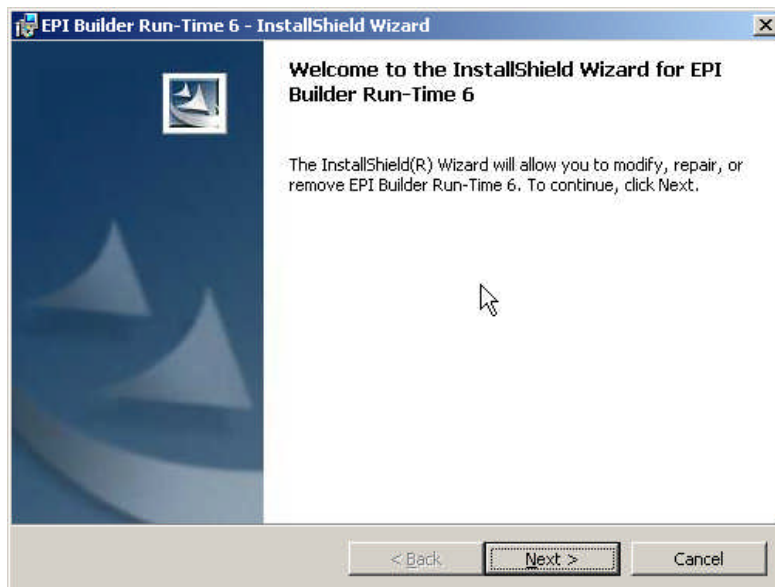


Figure 19.

Click **Next**. The **License Agreement** screen will display (Refer to Figure 20).

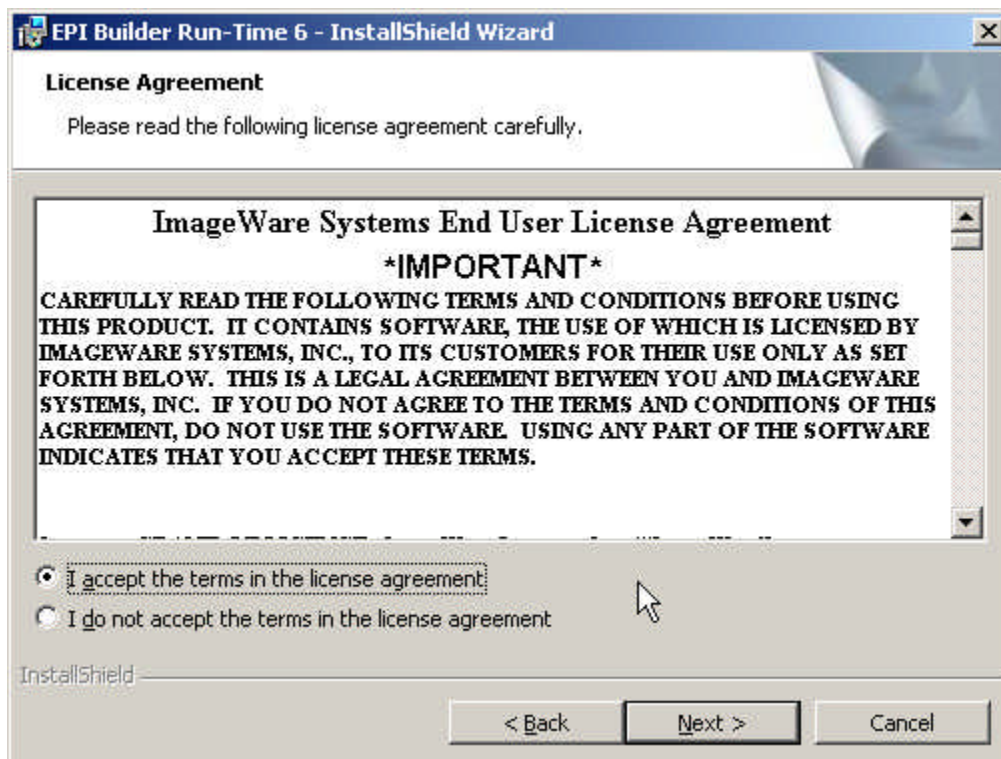


Figure 20.

After reviewing the license agreement, select **I accept the terms in the license agreement**. Click **Next**. The **Customer Information** screen will display (Refer to Figure 21).

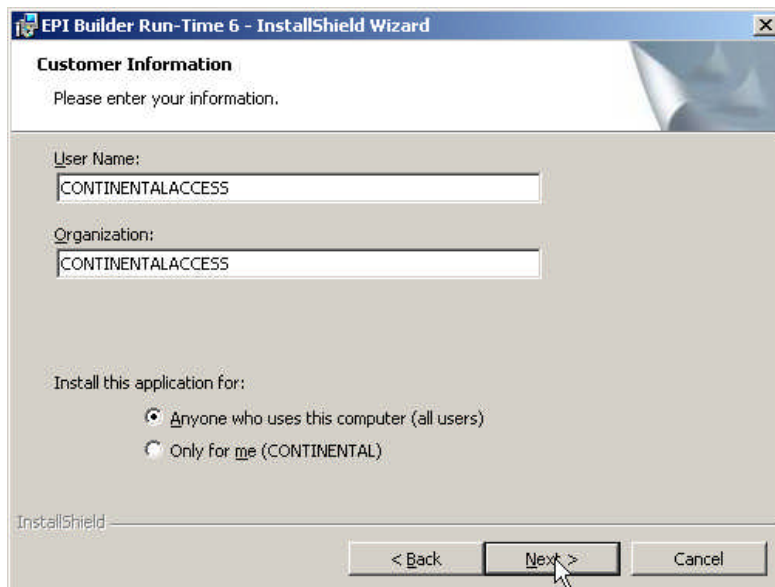


Figure 21.

Enter the User Name and Organization. Click **Next**. The **Setup Type** screen will display (Refer to Figure 22).

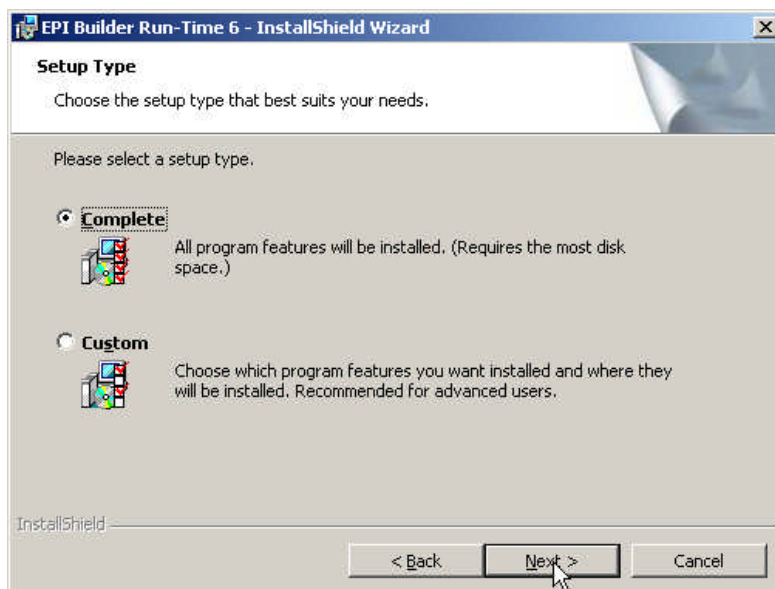


Figure 22.

Select **Complete** (This selection should be the default setting). Click **Next**. The **Ready to Install the Program** screen displays (Refer to Figure 23).

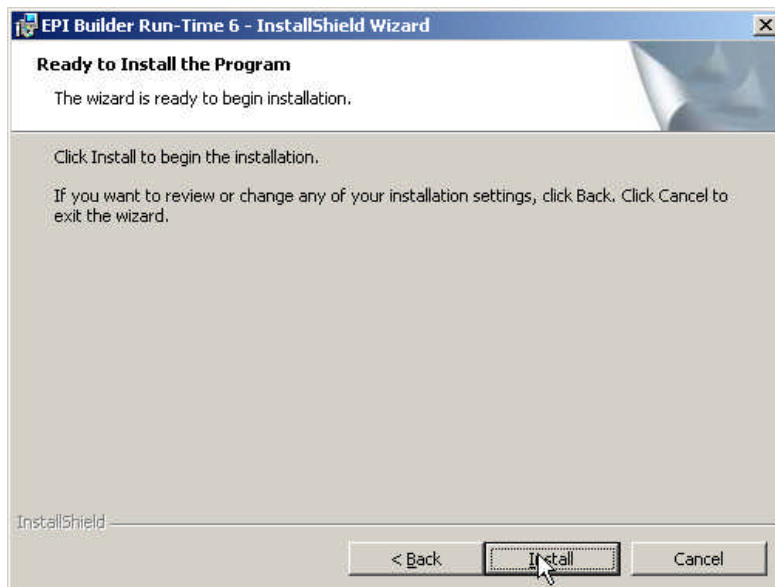


Figure 23.

Click **Install** to begin installation. After the installation begins, the **Installing EPI Builder Run-Time 6** progress bar screen displays (Refer to Figure 24).

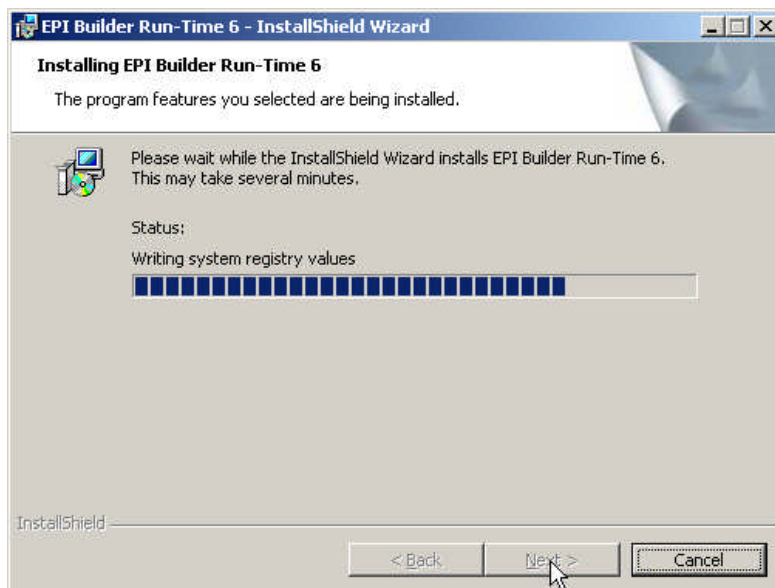


Figure 24.

After **EPI Builder Run-Time 6** is successfully installed, the **InstallShield Wizard Completed** screen displays (Refer to Figure 25).

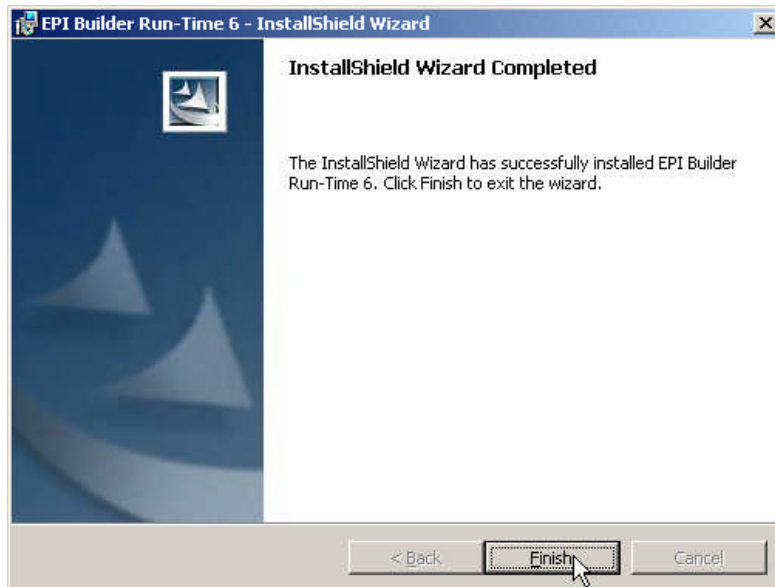


Figure 25.

The CardAccess installation is now complete.