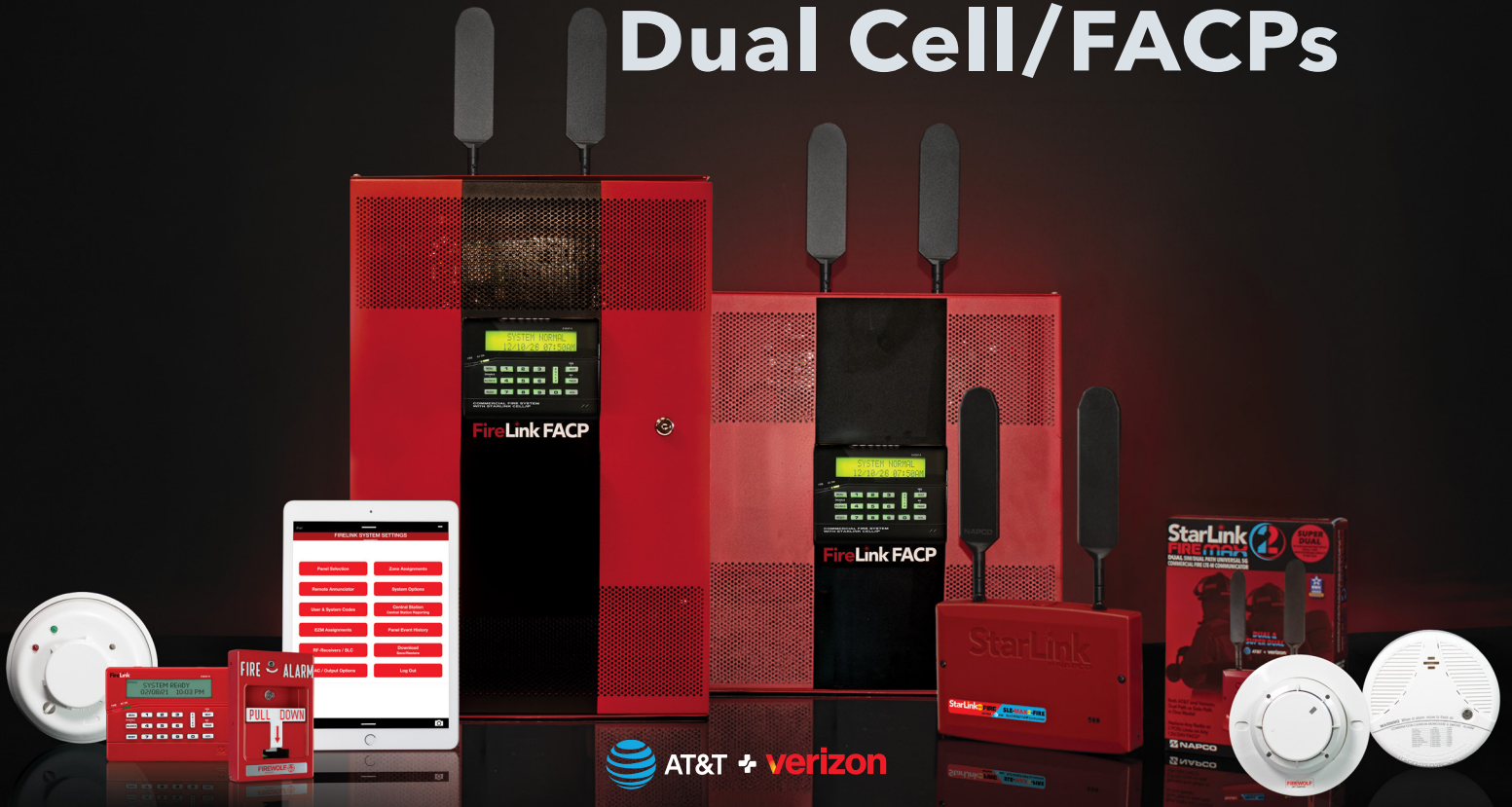


FireLink[®] SERIES

Dual Cell/FACPs



FIRELINK FLX-2 SERIES All-in-One Addressable & Conventional FACPs/FACUs, with LCD Annunciator & StarLink Fire MAX2 Dual SIM Cellular Onboard

Two Models Featuring:

- Award-Winning All-in-One Design: FACP, StarLink Fire MAX2 5G Dual SIM Verizon[®] + AT&T[®] Cellular Alarm Reporting & Menu-Driven Annunciator Saves Both Installation Time & Money
- Lowest Equipment Cost Available for Any Full-Featured Cell Reporting Fire Alarm Solution
- Proven NAPCO StarLink Fire[®] Sole or Dual Path Cell-only or Cell/IP Reports to any Central Station, via dial up or IP, without any special equipment.
- High-Performance Patented Dual Diversity Twin Antennas & Signal Boost[™] Circuitry for greater range & reliability
- Cloud-based Programming from any smart device. Eliminates the need for software, training or carrying a PC
- Integrated sync and smart operation support on each NAC for System Sensor[™] and Wheelock[®] Notification Devices
- Pro Tradeup Incentive Eligible • 36-Month Napco Warranty • NFPA & UL Compliant - UL864 10th Edition and UL985. CSFM

FireLink FLX2-32 8 to 32 Conventional Zones

- Conventional All-in-One FACU with StarLink Fire MAX2 Dual SIM/Dual Network Cellular & LCD Annunciator Built In
- **Inside: StarLink Fire MAX2 Dual SIM/Dual Path Communicator** for 5G LTE-M alarm reporting built in, auto-selects best signal for Verizon[®] & AT&T[®] Cell Networks (red/blue network specific indicator inside) and swaps as needed.
- Selectable plans for sole or dual path service, cell or cell/IP in one &/or exclusive Super Dual[™] Supervised Dual Cell-Only Dual Path UL 864 Listed reporting (no IP/IT/Firewall issues)
- Cloud Programmable from any Smart Device
- Out-of-the-Box Preprogrammed, for 8 Conventional Zones - Ideal for waterflow applications
- 4A/24V Power Supply, (2ea) 24V NACs @ 2A ea., for up to 4 max
- Locking Enclosure: 16" x 14.25" x 5.2" (HWD) without cover. Houses up to 16Ah @24V battery backup capacity



FireLink FLX2-255 255-Point Addressable FACP

- Addressable All-in-One FACU with StarLink Fire MAX2 Dual SIM/Dual Network Cellular & LCD Annunciator Built In – Saves Equipment & Labor Costs
- 128 Addressable Points, Expandable to 255 (w/ 1 module, GEMC-FW-SLC)
- **Inside: StarLink Fire MAX2 Dual SIM/Dual Path Communicator** for 5G LTE-M alarm reporting built in, auto-selects best signal for Verizon[®] & AT&T[®] Cell Networks (red/blue network specific indicator inside) & swaps as needed.
- Selectable plans for sole or dual path service, cell or cell/IP in one &/or exclusive Super Dual[™] Supervised Dual Cell-Only Dual Path UL 864 Listed reporting (no IP/IT/ Firewall issues)
- Cloud Programmable from any Smart Device
- 7A/24V Power Supply, (4) 24V NACs @ 2A ea., max.
- XL Locking Enclosure: 25" x 14.25" x 5.2" (HWD) without cover. Houses up to 32Ah @24V battery backup capacity



FIRELINK SYSTEM SPECIFICATIONS

FIRELINK FLX2-32 SYSTEM SPECIFICATIONS:

- **FACP:** 8 to 32 Zone Conventional Fire Alarm Control Panel, 8 conventional fire zones, suitable for 2-wire fire, expandable to 32; 2 to 4 programmable NAC circuits, 2A @ 24V
- **Built-In Annunciator:** Menu-driven operation w/ backlit custom alphanumeric display and functionality for Reset, Acknowledge, Silence (with disable).
- **Onboard, Integrated StarLink Fire MAX2 Dual SIM Cellular Communicator®** - Code-compliant, replaces 2 POTS lines to save thousands of dollars per year over leased landlines.
- Choice of plans for sole path, dual path Cell/IP or Super Dual Cell-only Supervised Dual Path.
- Reports to any Central Station, via dial up or IP, without any special equipment.
- Integrated sync and smart operation support on each NAC for System Sensor™ Wheelock® Notification Devices
- Power Supply, 4A @ 24V
- 2 Onboard serial ports – one for high-speed local downloading
- Fully Cloud Programmable from smart devices/tablets, Preprogrammed, or optional Quickloader® Software custom programmable.
- Conveniently Preprogrammed out of the box: **Default Program**
 - Zone 1 Waterflow
 - Zone 2 Supervisory (Tamper)
 - Zone 3 Conventional Fire Zone
 - Zone 4 Conventional Fire Zone
 - Zone 5 Conventional Fire Zone
 - Zone 6 Conventional Fire Zone
 - Zone 7 Conventional Fire Zone
 - Zone 8 Supervisory (Cell/IP Communicator Trouble)
 - *Plus Expansion up to 32 Zones/Points*
- Locking Enclosure for surface mount* or recess mounting (between the studs) 16" x 14.25" x 5.2" (H x W x D) without cover. Houses up to 16Ah @ 24V battery backup capacity. *Note: For flush mount applications, use external antennas (see ordering info.)
- 36-Month Napco Warranty

FACP EXPANSION OPTIONS

- Expandable with conventional or SLC addressable devices
- Main FACP board supports 1 Addressable Fire SLC (addressable Signaling Line Circuit controllers)
- Supports up to 6 additional Red fire annunciators, GEMC-FK1 or FireLink FL-FK1, mounted anywhere on the bus
- Addressable SLC Loop Isolator (optional use - for fire applications requiring increased circuit integrity, e.g., meets Class A, Style 7 loop requirements).
- SLC Fire Devices supported: Analog smoke detector, analog heat detector, duct detector, pull station, conventional zone module & short circuit isolator

FACP INPUTS

- Up to 32 Zones/Points from a wide range of initiating devices (see ordering info.)
- Addressable SLC Loop – supports up to 1, 32 point loop
- Conventional 1- to 4-zone EZM Expansion modules on the 4-wire fire bus or SLC loops
- Conventional 2-wire or 4-wire smoke detector inputs
- SLC Fire Devices supported: analog smoke detector, analog heat detector, duct detector, pull station, conventional zone module & short circuit isolator

FACP OUTPUTS

- Up to 96 outputs
- Four onboard NAC circuits, 2 amps each, total 4A @ 24V
- Onboard Wheelock & System Sensor NAC sync/strobe/horn protocol allows initial silence of audible appliances while maintaining visual notification, without the use of additional modules
- Addressable SLC Fire Devices: Supervised relay, unsupervised relay
- Fire 4-wire bus devices: 8 zone form C relay (GEMC-RM3008), 8 open collector output (GEMC-OUT8)
- Support for Legacy & Existing Notification Appliances – One NAC output configurable for 12V for easy retrofit compatibility
- UL Regulated NAC output
- Automatic drift compensation for SLC smoke detectors
- Programmable obscuration level by smoke detector device
- Tri-Mode Smoke Obscuration Report (for addressable detectors) generated remotely or locally (see WI2309LF instructions)

Agencies, Compliance: UL 864 10th Ed., & NFPA 72 Eds. 2019, 2016, 2013, 2010, 2007, CSFM, LAFD, FDNY COA

FIRELINK FLX2-255 SYSTEM SPECIFICATIONS:

- **FACP:** Addressable 128 to 255 Point Fire Alarm Control Panel; 4 programmable NAC circuits, 2A max @ 24V ea. or 4 programmable NAC circuits, 6.5A max @ 24V
- **Built-In Annunciator:** Menu-driven operation w/ backlit custom alphanumeric display and functionality for Reset, Acknowledge, Silence (with disable).
- **Onboard, Integrated StarLink Fire MAX2 Dual SIM Cellular Communicator®** - Code-compliant, replaces 2 POTS lines to save thousands of dollars per year over leased landlines.
- Choice of plans for sole path, dual path Cell/IP or Super Dual Cell-only Supervised Dual Path.
- Integrated sync & smart operation support on each NAC for System Sensor™ & Wheelock® Notification Devices
- Power Supply, 7A @ 24V
- 2 Onboard serial ports – one for high-speed local downloading
- Fully Cloud Programmable - mobile friendly, Preprogrammed, or optional Quickloader® Software custom programmable.
- Conveniently preprogrammed w/ a default program out of the box, zones 1-8.
- Locking Enclosure for surface mount* or recess mounting (between the studs) 25" x 14.25" x 5.2" (H x W x D) w/o cover. Houses up to 32Ah @ 24V battery backup capacity. *Note: For flush mount applications, use external antennas (see ordering info.)
- 36-Month Napco Warranty

FACP EXPANSION OPTIONS

- Expandable to 255 Pts. with one module (GEMC-FWSLC); SLC addressable or conventional fire devices
- Main FACP board supports 1 Addressable Fire SLC (addressable Signaling Line Circuit controllers)
- Fire 4-wire bus for annunciators & non-SLC (conventional) devices, including 12V devices
- Supports up to 6 additional Red fire annunciators, GEMC-FK1 or FireLink FL-FK1, mounted anywhere on the bus
- Addressable SLC Loop Isolator - optional use - for fire applications requiring increased circuit integrity, e.g., meets Class A, Style 7 loop requirements.
- SLC Fire Devices supported: Analog smoke detector, analog heat detector, duct detector, pull station, conventional zone module & short circuit isolator

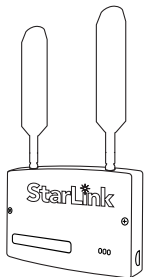
FACP INPUTS

- Up to 255 Zones/Points from a wide range of initiating devices (see ordering info.)
- Addressable SLC Loop – supports 128 Pts., expandable to 255
- SLC Fire Devices supported: analog smoke detector, analog heat detector, duct detector, pull station, conventional zone module & short circuit isolator
- Conventional 1- to 4-zone EZM Expansion modules on the 4-wire fire bus or SLC loops
- Conventional 2-wire or 4-wire smoke detector inputs

FACP OUTPUTS

- Up to 96 outputs
- 4 onboard Class B or 1 Class A NAC circuits, 2 amps ea., total 6.5A @ 24V; Up to 24
- Onboard Wheelock and System Sensor NAC sync/strobe/horn protocol allows initial silence of audible appliances while maintaining visual notification, without the use of additional modules
- Addressable SLC Fire Devices: Supervised relay, unsupervised relay
- Fire 4-wire bus devices: 8 zone form C relay (GEMC-RM3008), 8 open collector output (GEMC-OUT8)
- Support for Legacy & Existing Notification Appliances – 2 NAC outputs configurable for 12V for easy retrofit compatibility
- Automatic drift compensation for SLC smoke detectors
- Programmable obscuration level by smoke detector device
- Tri-Mode Smoke Obscuration Report (for addressable detectors) generated remotely or locally (see WI2309LF instructions)

Agencies, Compliance: UL 864 10th Ed., & NFPA 72 Eds. 2019, 2016, 2013, 2010, 2007, CSFM, LAFD, FDNY COA

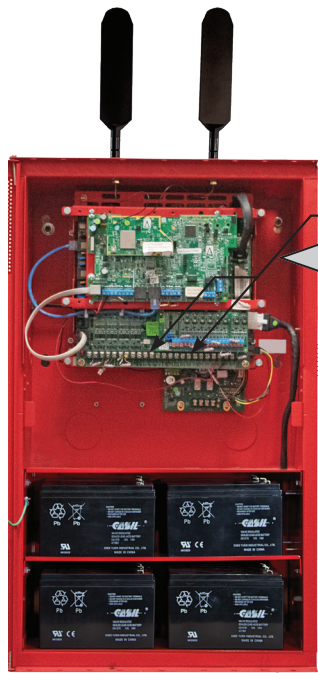


INSIDE

Powerful Built-In StarLink Fire Max2 Cellular/IP Commercial Fire Alarm Reporting: Verizon/AT&T

5G LTE-M DUAL SIM SOLE & DUAL PATH CELL/IP COMMUNICATOR SPECS

- Napco Direct-to-Carrier Native Cell Accts - No roaming outside U.S.
- Better Range Tech with Patented Dual Antennas
- Selectable Fire Service Plans for Various Supervisory Check-Ins
- Easier AHJ Inspections w/ Color Cell Network ID LEDs
- SOC2 Cybersecurity Data & Liability Protection
- UL & ASRA Certified NOC - All Signals Remain in America
- New! Optional Direct to Central Station Reporting
- Instant Pro Rebate Program

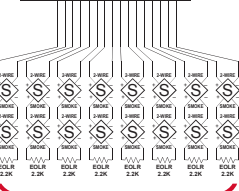


4 or 7 AMP MAIN POWER SUPPLY (GEMC-PS24V7A-R or GEMC-PS24V4A-R)



GEMC-FK1 Fire Annunciator

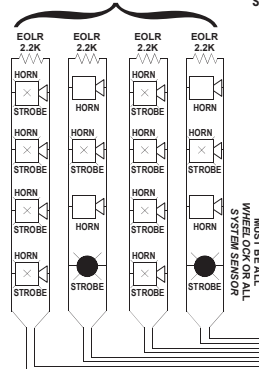
FIRE BUS DEVICES



8 Zones of Conventional 2-Wire Smokes Pull Stations &/or Heat Detectors

4 On-Board NAC Circuits (Class B) (Shown)

-or- 2 On-Board NAC Circuits (Class A)



GEMC-12V2APS-CF 12V AUX POWER SUPPLY

WIRE OR ALL SYSTEM SENSOR



Commercial Fire & Burg approved Wireless Receiver, supports 255 devices, max of (4) receivers supported by GEM-C system.

GEMC-WL-SMK-2-E



Wireless Commercial Fire Device - Photoelectric Smoke Detector - UL 864 10th Edition Compliant (200 Sec supervision)

GEMC-WL-HEAT-2-2



Wireless Commercial Fire Device - Heat Detector, 135F - UL 864 10th Edition Compliant (200 Sec supervision)

GEMC-WL-CO



CARBON MONOXIDE DETECTOR

GEMC-SMK-CO-E



Wireless Smoke/CO Detector

GEMC-WL-WD2-2



Wireless 2 input Module, Suitable for Commercial Fire and/or Burg Applications. UL 864 10th Edition Compliant (200 Sec supervision)

GEMC-NAC7S NAC Power (5, Max.)



FIRELINK FLX2-255 FACP/FACU



FIRELINK FLX2-32 FACP/FACU



2 SLC Modules, max.

Note: The four GEMC-REVC max. is reduced by 1 for each SLC module.

Up to 126 Devices

2-WIRE FIRE SLC ADDRESSABLE LOOP



FW-2-E Two Wire Detector

FW-4-H-E Four Wire Detector with 135° Thermal Heat Sensor

MUST BE ALL WHEELOCK OR ALL SYSTEM SENSOR

MUST BE ALL WHEELOCK OR ALL SYSTEM SENSOR

MUST BE ALL WHEELOCK OR ALL SYSTEM SENSOR

MUST BE ALL WHEELOCK OR ALL SYSTEM SENSOR

MUST BE ALL WHEELOCK OR ALL SYSTEM SENSOR

MUST BE ALL WHEELOCK OR ALL SYSTEM SENSOR

MUST BE ALL WHEELOCK OR ALL SYSTEM SENSOR

MUST BE ALL WHEELOCK OR ALL SYSTEM SENSOR

MUST BE ALL WHEELOCK OR ALL SYSTEM SENSOR

MUST BE ALL WHEELOCK OR ALL SYSTEM SENSOR

MUST BE ALL WHEELOCK OR ALL SYSTEM SENSOR

MUST BE ALL WHEELOCK OR ALL SYSTEM SENSOR

MUST BE ALL WHEELOCK OR ALL SYSTEM SENSOR

MUST BE ALL WHEELOCK OR ALL SYSTEM SENSOR

MUST BE ALL WHEELOCK OR ALL SYSTEM SENSOR

MUST BE ALL WHEELOCK OR ALL SYSTEM SENSOR

MUST BE ALL WHEELOCK OR ALL SYSTEM SENSOR

MUST BE ALL WHEELOCK OR ALL SYSTEM SENSOR

MUST BE ALL WHEELOCK OR ALL SYSTEM SENSOR

MUST BE ALL WHEELOCK OR ALL SYSTEM SENSOR

MUST BE ALL WHEELOCK OR ALL SYSTEM SENSOR

MUST BE ALL WHEELOCK OR ALL SYSTEM SENSOR

MUST BE ALL WHEELOCK OR ALL SYSTEM SENSOR

MUST BE ALL WHEELOCK OR ALL SYSTEM SENSOR

MUST BE ALL WHEELOCK OR ALL SYSTEM SENSOR

MUST BE ALL WHEELOCK OR ALL SYSTEM SENSOR

MUST BE ALL WHEELOCK OR ALL SYSTEM SENSOR

MUST BE ALL WHEELOCK OR ALL SYSTEM SENSOR

MUST BE ALL WHEELOCK OR ALL SYSTEM SENSOR

MUST BE ALL WHEELOCK OR ALL SYSTEM SENSOR

MUST BE ALL WHEELOCK OR ALL SYSTEM SENSOR

MUST BE ALL WHEELOCK OR ALL SYSTEM SENSOR

MUST BE ALL WHEELOCK OR ALL SYSTEM SENSOR

MUST BE ALL WHEELOCK OR ALL SYSTEM SENSOR

MUST BE ALL WHEELOCK OR ALL SYSTEM SENSOR

MUST BE ALL WHEELOCK OR ALL SYSTEM SENSOR

MUST BE ALL WHEELOCK OR ALL SYSTEM SENSOR

MUST BE ALL WHEELOCK OR ALL SYSTEM SENSOR

MUST BE ALL WHEELOCK OR ALL SYSTEM SENSOR

MUST BE ALL WHEELOCK OR ALL SYSTEM SENSOR

MUST BE ALL WHEELOCK OR ALL SYSTEM SENSOR

MUST BE ALL WHEELOCK OR ALL SYSTEM SENSOR

MUST BE ALL WHEELOCK OR ALL SYSTEM SENSOR

MUST BE ALL WHEELOCK OR ALL SYSTEM SENSOR

MUST BE ALL WHEELOCK OR ALL SYSTEM SENSOR

MUST BE ALL WHEELOCK OR ALL SYSTEM SENSOR

MUST BE ALL WHEELOCK OR ALL SYSTEM SENSOR



	FIRELINK DUAL CELL/FACP	
	FireLink FL-FLX2-32	FireLink FL-FLX2-255
Voltage	24V	24V
Zones/Pts; Max w/Expansion	8; 32	128; 255
Addressable	✓	✓
Conventional (12V or 24V devices)	✓	✓
Wireless	✓	✓
Special Features	StarLink Fire® MAX2 Dual Cell onboard	StarLink Fire® MAX2 Dual Cell onboard
Programming	Preprogrammed 8 zones; Up/Download or Cloud-Programming	Preprogrammed 8 zones; Up/Download or Cloud-Programming
NACs /Max. NACs (Class B)	4; up to 22	4; up to 22
Notification Power	—	—
Power Supply	4A, 24V	4A, 24V
Horn/Strobe Sync on NACs (Wheelock/Sys Sensor protocol)	✓	✓
DACT w/TCP-IP option	—	—
Cell &/or IP	MAX 2 Cell, Dual Path Cell/IP or Super Dual	MAX 2 Cell, Dual Path Cell/IP or Super Dual
Annunciator	On Door; or FLX-RFA Remote	On Door; or FLX-RFA Remote
Housing	16" x 14.25"; Removable Door, Locking, Flush or Surface Mt.	25" x 14.25"; Removable Door, Locking, Flush or Surface Mt.
Max. Battery	16AH	32AH
Compliances	UL 864 10th Ed., & NFPA 72 (2016, 2013, 2010, 2007); CSFM, NYCFD, LAFD	UL 864 10th Ed., & NFPA 72 (2016, 2013, 2010, 2007); CSFM, NYCFD, LAFD

ORDERING INFORMATION

FLX2-32 FireLink Conventional 8 to 32 Zone Fire Alarm Control Panel, preloaded program ideal for waterflow supervisory, expandable to 32; 2A programmable NAC circuits, up to 4 max @ 24V; Dual SIM Cellular Alarm Communicator (Verizon® + AT&T®/IP) and integral menu-Driven LCD annunciator, w/ 4 Amp, 24V Power Supply, Locking, Red Enclosure, (surface or flush mount*), removable 16" x 17" door, with 14.25" x 16" base. Houses up to 16Ah battery backup. *Note: For flush mount applications, use external antennas (see SLE-ANEXT75)

FLX2-255 FireLink Conventional 128 to 255 Zone Fire Alarm Control Panel, preloaded program ideal for waterflow supervisory, expandable to 255; 2A programmable NAC circuits, up to 4 max @ 24V; Dual SIM Cellular Alarm Communicator (Verizon® + AT&T®/IP) and integral menu-Driven LCD annunciator, w/ 4 Amp, 24V Power Supply, Locking, Red Enclosure, (surface or flush mount*), removable 16" x 25" door, with 14.25" x 16" base. Houses up to 32Ah battery backup. *Note: For flush mount applications, use external antennas (see SLE-ANEXT75)

SLE-ANEXT75 Optional Extended Antenna (pro-grade conical shape), with 4'-100' cable see Omni Data Sheet A745B

FL-FK1 Additional FireLink LCD Remote Annunciator, red, mounts anywhere on bus.

GEMC-FK1 LCD Fire Red Annunciator (Menu-driven operation, functionality for Reset, Acknowledge, Silence (with disable).

GEMC-EZM8 8-point Expansion Module



Conventional Fire System Peripherals

FWC-CNV-PULL Conventional Single Action Pull Station, with Hex Reset

FWC-CNV-PULLK Conventional Single Action Pull Station, with Key Reset

FWC-CNV-PULL2 Conventional Dual Action Pull Station, with Hex Reset

FWC-CNV-PULL2K Conventional Dual Action Pull Station, with Key Reset



GEMC-NAC7S FireLink Remote Power Supply for all FACUs

FW-2-E Two Wire Detector

FW-4-E Four Wire Detector

FW-2-H-E Two Wire Detector w/ 135° Thermal Heat Sensor

FW-4-H-E Four Wire Detector w/ 135° Thermal Heat Sensor



FW-2-E



FW-4-H-E

Addressable Peripherals

GEMC-FW-SLC Addressable SLC Fire Module, supports up to 128 addressable SLC fire devices, below. Up to 2 connect to Panel.

FWC-FSLC-HEAT Addressable Analog SLC Heat, 135 - 150°F, head**

FWC-FSLC-DUCT Addressable SLC Duct smoke detector, photoelectric (Requires use of GEMC-24VR Voltage Regulator) Includes 2 onboard relays that follow state of detector.



FWC-FSLC-DUCTRA Remote Indicator Plate with LED indicator & key reset.

FWC-FSLC-EZM2 Addressable SLC 2-zone conventional expansion module. Uses one address on SLC loop, but yields 2 indep. contact monitoring circuits, for pull stations, water flow and other dry contact alarm initiating devices.

FWC-FSLC-EZM1 Addressable SLC 1-input conventional module, similar to usage above.

FWC-FSLC-CZM Addressable SLC Conventional Zone module, for monitoring of dry contacts, i.e., pull stations & conv. smokes (Requires use of GEMC-24VR Voltage Regulator) Creates a 24V 2-wire fire zone on the SLC loop, selectable Class A or B zone wiring.

FWC-FSLC-RM2 Addressable SLC 2-output module (requires 2 SLC addresses)

FWC-FSLC-ISO Addressable SLC Short Circuit Module (Optional: For special applications, meets Class A, Style 7 loop reqts.)

Addressable Peripherals (Continued)

FWC-FSLC-SOM1E Addressable SLC Fire supervised output module. Application examples: elevator recall, HVAC shutdown, additional NAC output w/ power supply (Requires use of GEMC-24VR Voltage Regulator)

FWC-FSLC-PULL Addressable SLC Fire Pull Station, standard hex-key reset.

FWC-FSLC-PULLK Addressable SLC Fire Pull Station, with key reset.

FWC-FSLC-PULL2 Dual action, pull station with hex-key reset.

FWC-FSLC-PULL2K Dual action pull station, with key reset.

FWC-FSLC-PROG2 Tool for address-programming SLC devices

FWC-FSLC-SMK6B **Smoke/Heat 6" Base, required for FWC-FSLC-SMK and -HEAT devices, above

FWC-FSLC-SH UL 6th Edition Smoke/Heat Detector, Digital Analog Multicriteria Sensor, 2" low profile, fast DCP protocol

FWC-FSLC-SCH UL 6th Edition Smoke/Heat/CO Detector, Digital Analog Multicriteria Sensor, 2" low profile, 10yr CO sensor lifespan

Wireless Peripherals

GEMC-RCV Commercial Fire & Burg approved Wireless Receiver, supports 255 devices, max of (4) receivers supported by GEM-C system.



GEMC-RM3008 Eight (8) Form "C" Relay Outputs (Programmable for Burg or Fire)

GEMC-OUT8 8 Zone Output Remote Relay Module

GEMC-WL-CO Wireless Carbon Monoxide Detector



GEMC-WL-CO

GEMC-WL-HEAT2 Heat Detector

GEMC-WL-SMK-2E Wireless Smoke Detector



GEMC-WL-SMK-2E

FL-SMK-CO-E Addressable Analog Combo Smoke/CO head**

GEMC-SMK-CO-E Wireless Smoke/CO Detector



GEMC-WL-HEAT2-2

GEMC-WL-SMK-2-E Wireless Commercial Fire Device - Photoelectric Smoke Detector - UL 864 10th Edition Compliant (200 Sec supervision)



GEMC-WL-SMK-2-E

GEMC-WL-WD2-2F Wireless 2 Input Module for Commercial Fire; UL 864 10th Edition Compliant (200 Second supervision)



GEMC-WL-WD2-2



FLX2-255

FLX2-32

FL-FK1