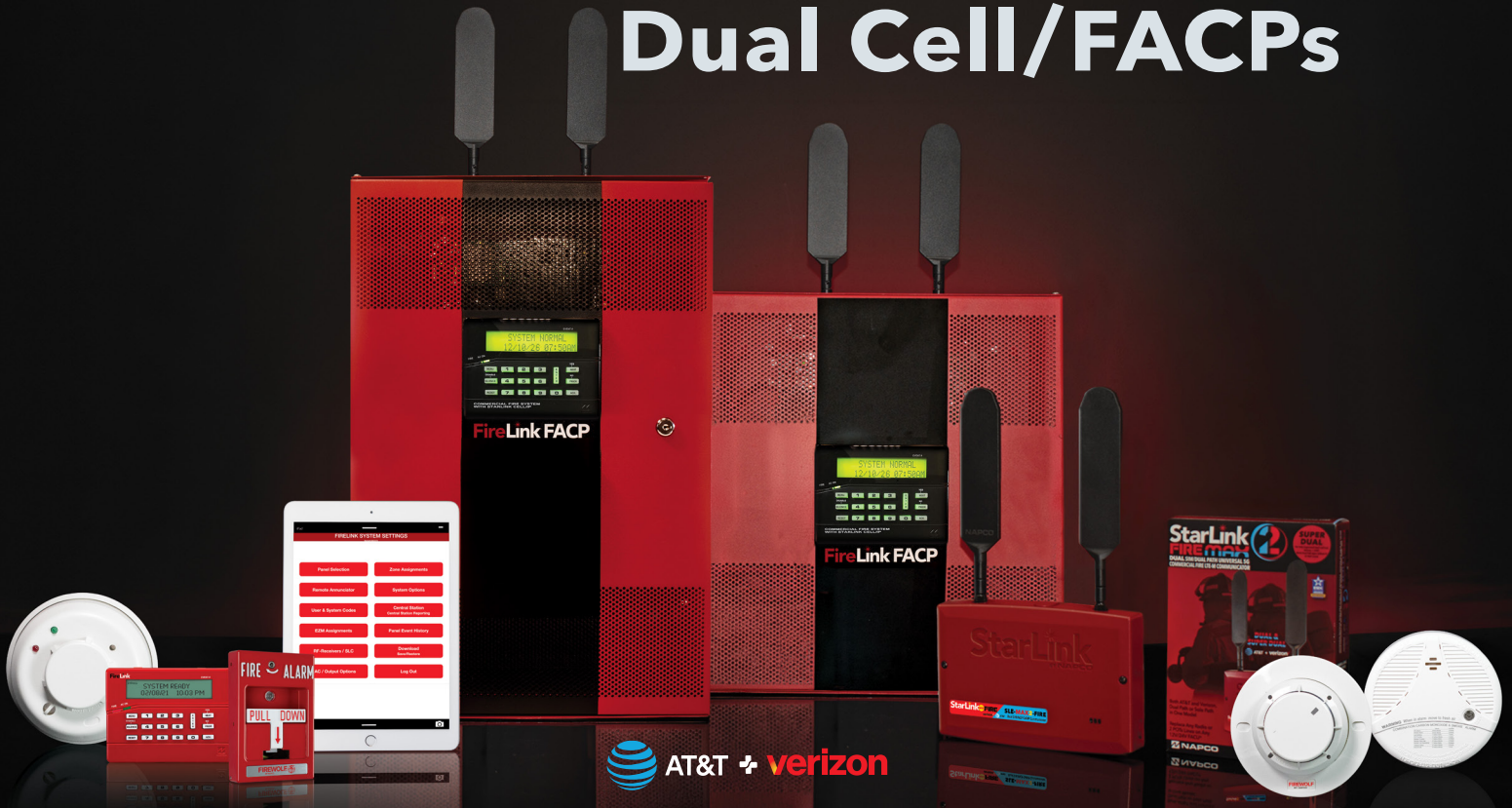


FireLink[®] SERIES

Dual Cell/FACPs



FIRELINK FLX-2 SERIES All-in-One Addressable & Conventional FACPs/FACUs, with LCD Annunciator & StarLink Fire MAX2 Dual SIM Cellular Onboard

Two Models Featuring:

- Award-Winning All-in-One Design: FACP, StarLink Fire MAX2 5G Dual SIM Verizon[®] + AT&T[®] Cellular Alarm Reporting & Menu-Driven Annunciator Saves Both Installation Time & Money
- Lowest Equipment Cost Available for Any Full-Featured Cell Reporting Fire Alarm Solution
- Proven NAPCO StarLink Fire[®] Sole or Dual Path Cell-only or Cell/IP Reports to any Central Station, via dial up or IP; New StarLink Direct to Central Station Option
- High-Performance Patented Dual Diversity Twin Antennas & Signal Boost[™] Circuitry for greater range & reliability
- Cloud-based Programming from any smart device. Eliminates the need for software, training or carrying a PC
- Integrated sync and smart operation support on each NAC for System Sensor[™] and Wheelock[®] Notification Devices
- Pro Tradeup Incentive Eligible • 36-Month Napco Warranty • NFPA & UL Compliant - UL864 10th Edition and UL985. CSFM

FireLink FLX2-32 8 to 32 Conventional Zones

- Conventional All-in-One FACU with StarLink Fire MAX2 Dual SIM/Dual Network Cellular & LCD Annunciator Built In
- **Inside: StarLink Fire MAX2 Dual SIM/Dual Path Communicator** for 5G LTE-M alarm reporting built in, auto-selects best signal for Verizon[®] & AT&T[®] Cell Networks (red/blue network specific indicator inside) and swaps as needed.
- Selectable plans for sole or dual path service, cell or cell/IP in one &/or exclusive Super Dual[™] Supervised Dual Cell-Only Dual Path UL 864 Listed reporting (no IP/IT/Firewall issues) + StarLink Direct to CS
- Cloud Programmable from any Smart Device
- Out-of-the-Box Preprogrammed, for 8 Conventional Zones - Ideal for waterflow applications
- 4A/24V Power Supply, (2ea) 24V NACs @ 2A ea., for up to 4 max
- Locking Enclosure: 16" x 14.25" x 5.2" (HWD) without cover. Houses up to 16Ah @24V battery backup capacity



FireLink FLX2-255 255-Point Addressable FACP

- Addressable All-in-One FACU with StarLink Fire MAX2 Dual SIM/Dual Network Cellular & LCD Annunciator Built In – Saves Equipment & Labor Costs
- 128 Addressable Points, Expandable to 255 (with 1 module, GEMC-FW-SLC)
- **Inside: StarLink Fire MAX2 Dual SIM/Dual Path Communicator** for 5G LTE-M alarm reporting built in, auto-selects best signal for Verizon[®] & AT&T[®] Cell Networks (red/blue network specific indicator inside) & swaps as needed.
- Selectable plans for sole or dual path service, cell or cell/IP in one &/or exclusive Super Dual[™] Supervised Dual Cell-Only Dual Path UL 864 Listed reporting (no IP/IT/ Firewall issues) + StarLink Direct to CS option
- Cloud Programmable from any Smart Device
- 7A/24V Power Supply, (4) 24V NACs @ 2A ea., max.
- XL Locking Enclosure: 25" x 14.25" x 5.2" (HWD) without cover. Houses up to 32Ah @24V battery backup capacity



FIRELINK SYSTEM SPECIFICATIONS

FIRELINK FLX2-32 SYSTEM SPECIFICATIONS:

- **FACP:** 8 to 32 Zone Conventional Fire Alarm Control Panel, 8 conventional fire zones, suitable for 2-wire fire, expandable to 32; 2 to 4 programmable NAC circuits, 2A @ 24V
- **Built-In Annunciator:** Menu-driven operation w/ backlit custom alphanumeric display and functionality for Reset, Acknowledge, Silence (with disable).
- **Onboard, Integrated StarLink Fire MAX2 Dual SIM Cellular Communicator®** - Code-compliant, replaces 2 POTs lines to save thousands of dollars per year over leased landlines.
- Choice of plans for sole path, dual path Cell/IP or Super Dual Cell-only Supervised Dual Path or StarLink Direct to Central Station.
- Reports to any Central Station(CS), via dial up or IP, without any special equipment.
- Integrated sync and smart operation support on each NAC for System Sensor™ Wheelock® Notification Devices
- Power Supply, 4A @ 24V
- 2 Onboard serial ports – one for high-speed local downloading
- Fully Cloud Programmable from smart devices/tablets, Preprogrammed, or optional Quickloader® Software custom programmable.
- Conveniently Preprogrammed out of the box: **Default Program**
 - Zone 1 Waterflow
 - Zone 2 Supervisory (Tamper)
 - Zone 3 Conventional Fire Zone
 - Zone 4 Conventional Fire Zone
 - Zone 5 Conventional Fire Zone
 - Zone 6 Conventional Fire Zone
 - Zone 7 Conventional Fire Zone
 - Zone 8 Supervisory (Cell/IP Communicator Trouble)
 - Plus Expansion up to 32 Zones/Points
- Locking Enclosure for surface mount* or recess mounting (between the studs) 16" x 14.25" x 5.2" (H x W x D) without cover. Houses up to 16Ah @ 24V battery backup capacity. *Note: For flush mount applications, use external antennas (see ordering info.)
- 36-Month Napco Warranty

FACP EXPANSION OPTIONS

- Expandable with conventional or SLC addressable devices
- Main FACP board supports 1 Addressable Fire SLC (addressable Signaling Line Circuit controllers)
- Supports up to 6 additional Red fire annunciators, GEMC-FK1 or FireLink FL-FK1, mounted anywhere on the bus
- Addressable SLC Loop Isolator (optional use - for fire applications requiring increased circuit integrity, e.g., meets Class A, Style 7 loop requirements.
- SLC Fire Devices supported: Analog smoke detector, analog heat detector, duct detector, pull station, conventional zone module & short circuit isolator

FACP INPUTS

- Up to 32 Zones/Points from a wide range of initiating devices (see ordering info.)
- Addressable SLC Loop – supports up to 1, 32 point loop
- Conventional 1- to 4-zone EZM Expansion modules on the 4-wire fire bus or SLC loops
- Conventional 2-wire or 4-wire smoke detector inputs
- SLC Fire Devices supported: analog smoke detector, analog heat detector, duct detector, pull station, conventional zone module & short circuit isolator

FACP OUTPUTS

- Up to 96 outputs
- Four onboard NAC circuits, 2 amps each, total 4A @ 24V
- Onboard Wheelock & System Sensor NAC sync/strobe/horn protocol allows initial silence of audible appliances while maintaining visual notification, without the use of additional modules
- Addressable SLC Fire Devices: Supervised relay, unsupervised relay
- Fire 4-wire bus devices: 8 zone form C relay (GEMC-RM3008), 8 open collector output (GEMC-OUT8)
- Support for Legacy & Existing Notification Appliances – One NAC output configurable for 12V for easy retrofit compatibility
- UL Regulated NAC output
- Automatic drift compensation for SLC smoke detectors
- Programmable obscuration level by smoke detector device
- Tri-Mode Smoke Obscuration Report (for addressable detectors) generated remotely or locally (see WI2309LF instructions)

Agencies, Compliance: UL 864 10th Ed., & NFPA 72 Eds. 2019, 2016, 2013, 2010, 2007, CSFM, LAFD, FDNV COA

FIRELINK FLX2-255 SYSTEM SPECIFICATIONS:

- **FACP:** Addressable 128 to 255 Point Fire Alarm Control Panel; 4 programmable NAC circuits, 2A max @ 24V ea. or 4 programmable NAC circuits, 6.5A max @ 24V
- **Built-In Annunciator:** Menu-driven operation w/ backlit custom alphanumeric display and functionality for Reset, Acknowledge, Silence (with disable).
- **Onboard, Integrated StarLink Fire MAX2 Dual SIM Cellular Communicator®** - Code-compliant, replaces 2 POTs lines to save thousands of dollars per year over leased landlines.
- Choice of plans reporting to any Central Station for sole path, dual path Cell/IP or Super Dual Cell-only Supervised Dual Path; or StarLink Direct to Central Station.
- Integrated sync & smart operation support on each NAC for System Sensor™ & Wheelock® Notification Devices
- Power Supply, 7A @ 24V
- 2 Onboard serial ports – one for high-speed local downloading
- Fully Cloud Programmable - mobile friendly, Preprogrammed, or optional Quickloader® Software custom programmable.
- Conveniently preprogrammed w/ a default program out of the box, zones 1-8.
- Locking Enclosure for surface mount* or recess mounting (between the studs) 25" x 14.25" x 5.2" (H x W x D) w/o cover. Houses up to 32Ah @ 24V battery backup capacity. *Note: For flush mount applications, use external antennas (see ordering info.)
- 36-Month Napco Warranty

FACP EXPANSION OPTIONS

- Expandable to 255 Pts. with one module (GEMC-FWSLC); SLC addressable or conventional fire devices
- Main FACP board supports 1 Addressable Fire SLC (addressable Signaling Line Circuit controllers)
- Fire 4-wire bus for annunciators & non-SLC (conventional) devices, including 12V devices
- Supports up to 6 additional Red fire annunciators, GEMC-FK1 or FireLink FL-FK1, mounted anywhere on the bus
- Addressable SLC Loop Isolator - optional use - for fire applications requiring increased circuit integrity, e.g., meets Class A, Style 7 loop requirements.
- SLC Fire Devices supported: Analog smoke detector, analog heat detector, duct detector, pull station, conventional zone module & short circuit isolator

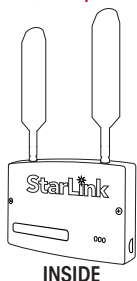
FACP INPUTS

- Up to 255 Zones/Points from a wide range of initiating devices (see ordering info.)
- Addressable SLC Loop – supports 128Pts., expandable to 255
- SLC Fire Devices supported: analog smoke detector, analog heat detector, duct detector, pull station, conventional zone module & short circuit isolator
- Conventional 1- to 4-zone EZM Expansion modules on the 4-wire fire bus or SLC loops
- Conventional 2-wire or 4-wire smoke detector inputs

FACP OUTPUTS

- Up to 96 outputs
- 4 onboard Class B or 1 Class A NAC circuits, 2 amps ea., total 6.5A @ 24V; Up to 24
- Onboard Wheelock and System Sensor NAC sync/strobe/horn protocol allows initial silence of audible appliances while maintaining visual notification, without the use of additional modules
- Addressable SLC Fire Devices: Supervised relay, unsupervised relay
- Fire 4-wire bus devices: 8 zone form C relay (GEMC-RM3008), 8 open collector output (GEMC-OUT8)
- Support for Legacy & Existing Notification Appliances – 2 NAC outputs configurable for 12V for easy retrofit compatibility
- Automatic drift compensation for SLC smoke detectors
- Programmable obscuration level by smoke detector device
- Tri-Mode Smoke Obscuration Report (for addressable detectors) generated remotely or locally (see WI2309LF instructions)

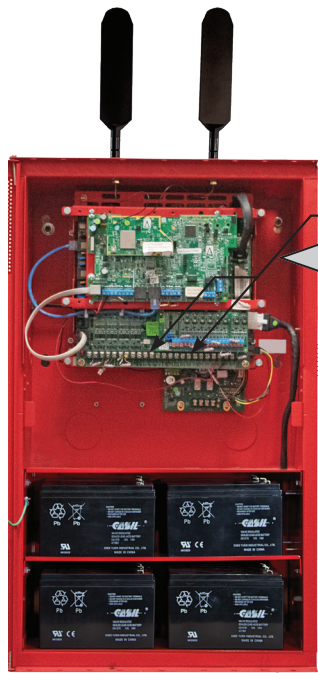
Agencies, Compliance: UL 864 10th Ed., & NFPA 72 Eds. 2019, 2016, 2013, 2010, 2007, CSFM, LAFD, FDNV COA



Powerful Built-In StarLink Fire Max2 Cellular/IP Commercial Fire Alarm Reporting: Verizon/AT&T

5G LTE-M DUAL SIM SOLE & DUAL PATH CELL/IP COMMUNICATOR SPECS

- Napco Direct-to-Carrier Native Cell Accts - No roaming outside U.S.
- Better Range Tech with Patented Dual Antennas
- Selectable Fire Service Plans for Various Supervisory Check-Ins
- Easier AHJ Inspections w/ Color Cell Network ID LEDs
- SOC2 Cybersecurity Data & Liability Protection
- UL & ASRA Certified NOC - All Signals Remain in America
- New! Optional Direct to Central Station Reporting
- Instant Pro Rebate Program

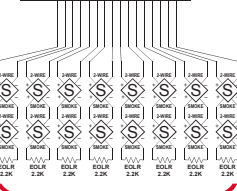


4 or 7 AMP MAIN POWER SUPPLY (GEMC-PS24V7A-R or GEMC-PS24V4A-R)

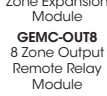


GEMC-FK1 Fire Annunciator

FIRE BUS DEVICES



8 Zones of Conventional 2-Wire Smokes Pull Stations &/or Heat Detectors



Commercial Fire & Burg approved Wireless Receiver, supports 255 devices, max of (4) receivers supported by GEM-C system.



Wireless Commercial Fire Device - Photoelectric Smoke Detector - UL 864 10th Edition Compliant (200 Sec supervision)



Wireless Commercial Fire Device - Heat Detector, 135F - UL 864 10th Edition Compliant (200 Sec supervision)



Wireless Smoke/CO Detector



Wireless 2 input Module, Suitable for Commercial Fire and/or Burg Applications. UL 864 10th Edition Compliant (200 Sec supervision)

Wireless Smoke/CO Detector

GEMC-NAC7S NAC Power (5, Max.)

2-WIRE FIRE SLC ADDRESSABLE LOOP



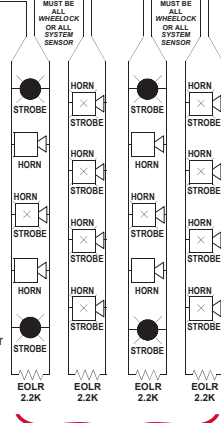
Addressable Pull Station (Also in Key Reset & Dual Action, Hex and Keyed models.)



Duct Detector (Also available, Remote Annunciator Plate.)



Dual Input Monitor Module



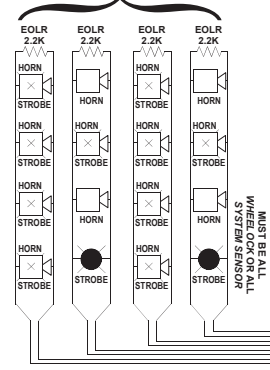
4 On-Board NAC Circuits (Class B)

-or-

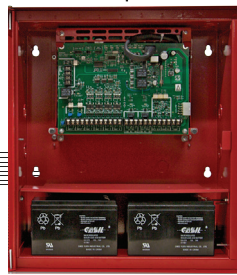
2 On-Board NAC Circuits (Class A)

(Not Shown)

4 On-Board NAC Circuits (Class B) (Shown) -or- 2 On-Board NAC Circuits (Class A)



GEMC-12V2APS-CF 12V AUX POWER SUPPLY



FIRELINK FLX2-255 FACP/FACU



FIRELINK FLX2-32 FACP/FACU

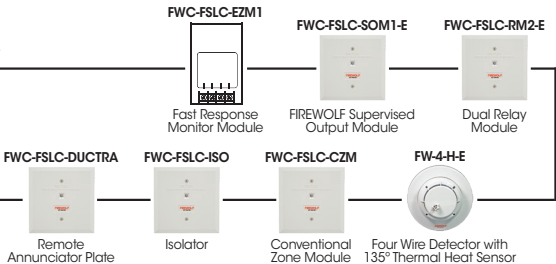


GEMC-FK1 Fire Annunciator

Up to 126 Devices

2 SLC Modules, max.

Note: The four GEMC-REVC max. is reduced by 1 for each SLC module.



	FIRELINK DUAL CELL/FACP	
	FireLink FL-FLX2-32	FireLink FL-FLX2-255
Voltage	24V	24V
Zones/Pts; Max w/Expansion	8; 32	128; 255
Addressable	✓	✓
Conventional (12V or 24V devices)	✓	✓
Wireless	✓	✓
Special Features	StarLink Fire® MAX2 Dual Cell onboard	StarLink Fire® MAX2 Dual Cell onboard
Programming	Preprogrammed 8 zones; Up/Download or Cloud-Programming	Preprogrammed 8 zones; Up/Download or Cloud-Programming
NACs /Max. NACs (Class B)	4; up to 22	4; up to 22
Notification Power	—	—
Power Supply	4A, 24V	6.5A, 24V
Horn/Strobe Sync on NACs (Wheelock/Sys Sensor protocol)	✓	✓
DACT w/TCP-IP option	—	—
Cell &/or IP	MAX 2 Cell, Dual Path Cell/IP or Super Dual	MAX 2 Cell, Dual Path Cell/IP or Super Dual
Annunciator	On Door; or FLX-RFA Remote	On Door; or FLX-RFA Remote
Housing	16" x 14.25"; Removable Door, Locking, Flush or Surface Mt.	25" x 14.25"; Removable Door, Locking, Flush or Surface Mt.
Max. Battery	16AH	32AH
Compliances	UL 864 10th Ed., & NFPA 72 (2016, 2013, 2010, 2007); CSFM, NYCFD, LAFD	UL 864 10th Ed., & NFPA 72 (2016, 2013, 2010, 2007); CSFM, NYCFD, LAFD

ORDERING INFORMATION

FLX2-32 FireLink Conventional/Addressable 8 to 32 Zone Fire Alarm Control Panel, preloaded program ideal for Conventional waterfall supervisory, expandable to 32 (Conventional or Addressable); 2A programmable NAC circuits, up to 4 max @ 24V; Dual SIM Cellular Alarm Communicator (Verizon® + AT&T®/IP) & integral menu-Driven LCD annunciator, w/ 4 Amp, 24V Power Supply. Locking, Red Enclosure, (surface or flush mount*), removable 16" x 17" door, with 14.25" x 16" base. Houses up to 16Ah battery backup. *Note: For flush mount applications, use external antennas (see SLE-ANTEXT75)

FLX2-255 FireLink Addressable/Conventional 128 to 255 Zone Fire Alarm Control Panel, similar to above, but expandable to 255 Conventional or Addressable Points; 2A programmable NAC circuits, up to 6.5A max @ 24V; Dual SIM Cellular Alarm Communicator (Verizon® + AT&T®/IP) and integral menu-Driven LCD annunciator, with 7 Amp, 24V Power Supply. Locking, Red Enclosure, (surface or flush mount*), removable 16" x 25" door, with 14.25" x 16" base. Houses up to 32Ah battery backup. *Note: For flush mount applications, use external antennas (see SLE-ANTEXT75)

SLE-ANTEXT75 Optional Extended Antenna (pro-grade conical shape), with 4'-100' cable see Omni Data Sheet A745B

FL-FK1 Additional FireLink LCD Remote Annunciator, red, mounts anywhere on bus.

GEMC-FK1 LCD Fire Red Annunciator (Menu-driven operation, functionality for Reset, Acknowledge, Silence (with disable)).

GEMC-EZM8 8-point Expansion Module



Conventional Fire System Peripherals

FWC-ADBLDUCTKT 4-Wire Conventional Photoelectric Duct Smoke Detector Kit, with FWC-FSLC-CZM module that allows the Duct Detector to be monitored on the addressable loop.

FWC-CNV-PULL Conventional Single Action Pull Station, with Hex Reset

FWC-CNV-PULLK Conventional Single Action Pull Station, with Key Reset

FWC-CNV-PULL2 Conventional Dual Action Pull Station, with Hex Reset

FWC-CNV-PULL2K Conventional Dual Action Pull Station, with Key Reset

GEMC-NAC7S FireLink Remote Power Supply for all FACUs

FW-2-E Two Wire Detector

FW-4-E Four Wire Detector

FW-2-H-E Two Wire Detector w/ 135° Thermal Heat Sensor

FW-4-H-E Four Wire Detector w/ 135° Thermal Heat Sensor



Addressable Peripherals

GEMC-FW-SLC Addressable SLC Fire Module, supports up to 128 addressable SLC fire devices, below. Up to 2 connect to Panel.

FWC-FSLC-HEAT Addressable Analog SLC Heat, 135 - 150°F, head**

FWC-FSLC-DUCT Addressable SLC Duct smoke detector, photoelectric (Requires use of GEMC-24VR Voltage Regulator) Incls 2 onboard relays that follow state of detector.

FWC-FSLC-DUCTRA Remote Indicator Plate with LED indicator & key reset.

FWC-FSLC-EZM2 Addressable SLC 2-zone conventional expansion module. Uses one address on SLC loop, but yields 2 indep. contact monitoring circuits, for pull stations, water flow and other dry contact alarm initiating devices.

FWC-FSLC-EZM1 Addressable SLC 1-input conventional module, similar to usage above.

FWC-FSLC-CZM Addressable SLC Conventional Zone module, for monitoring of dry contacts, i.e., pull stations & conv. smokes (Requires use of GEMC-24VR Voltage Regulator) Creates a 24V 2-wire fire zone on the SLC loop, selectable Class A or B zone wiring.

FWC-FSLC-RM2 Addressable SLC 2-output module (requires 2 SLC addresses)



Addressable Peripherals (Continued)

FWC-FSLC-ISO Addressable SLC Short Circuit Module (Optional: For special applications, meets Class A, Style 7 loop reqts.)

FWC-FSLC-SOM1E Addressable SLC Fire supervised output module. Application examples: elevator recall, HVAC shutdown, additional NAC output w/ power supply (Requires use of GEMC-24VR Voltage Regulator)

FWC-FSLC-PULL Addressable SLC Fire Pull Station, standard hex-key reset.

FWC-FSLC-PULLK Addressable SLC Fire Pull Station, with key reset.

FWC-FSLC-PULL2 Dual action, pull station with hex-key reset.

FWC-FSLC-PULL2K Dual action pull station, with key reset.

FWC-FSLC-PROG2 Tool for address-programming SLC devices

FWC-FSLC-SMK6B **Smoke/Heat 6" Base, required for FWC-FSLC-SMK and -HEAT devices, above

FWC-FSLC-SH UL 6th Edition Smoke/Heat Detector, Digital Analog Multicriteria Sensor, 2" low profile, fast DCP protocol

FWC-FSLC-SCH UL 6th Edition Smoke/Heat/CO Detector, Digital Analog Multicriteria Sensor, 2" low profile, 10yr CO sensor lifespan

Wireless Peripherals

GEMC-RECV Commercial Fire & Burg approved Wireless Receiver, supports 255 devices, max of (4) receivers supported by GEM-C system.

GEMC-RM3008 Eight (8) Form "C" Relay Outputs (Programmable for Burg or Fire)

GEMC-OUT8 8 Zone Output Remote Relay Module

GEMC-WL-CO Wireless Carbon Monoxide Detector

GEMC-WL-HEAT2 Heat Detector

GEMC-WL-SMK-2E Wireless Smoke Detector

FL-SMK-CO-E Addressable Analog Combo Smoke/CO head**

GEMC-SMK-CO-E Wireless Smoke/CO Detector

GEMC-WL-SMK-2-E Wireless Commercial Fire Device - Photoelectric Smoke Detector - UL 864 10th Edition Compliant (200 Sec supervision)

GEMC-WL-WD2-2F Wireless 2 Input Module for Commercial Fire; UL 864 10th Edition Compliant (200 Second supervision)



FLX2-255

FLX2-32

FL-FK1