

Napco Security Technologies, Inc. is proud to manufacture the finest quality products. Our focus is exclusively on security design and innovation. That's why you can expect the best in security products from the Napco Family of Companies:



Intrusion &  
Fire Alarm Systems



Enterprise Access Control  
Systems



ALARM LOCK®  
Electronic Access &  
Exit Locks



MARKS  
USA®

Architectural, Life-Safety &  
Security Locks



- Intrusion Systems, Hardwire & Wireless, Conventional & Addressable
- Fire Systems, Hardwire & Wireless, Conventional & Addressable
- Motion detectors, wireless transmitters, Keyfobs, wireless receivers
- Connected Home Remote Services, Video, Alarms, Lighting, Temp, Locks & Notifications
- Wireless Cellular & IP Universal Alarm Communicators and App for Intrusion & Connected Home also Commercial Fire
- **Napco Fusion™ Platform-Integrated**

[www.napcosecurity.com](http://www.napcosecurity.com)  
**1-800-645-9445**  
salesinfo@napcosecurity.com

- Enterprise access control systems, scalable, 2 to thousands of doors
- Web Client remote support
- Wireless Access Locks
- POE-, 2-, 4-, 8-, & 16- Door Controllers
- Multi-card, FIPS, iClass readers & biometrics
- Campus & University Lock-Down & Visitor Management
- **Napco Fusion™ Platform Integration:** Access, video, DVR/NVR, locking & alarm systems

[www.continentalaccess.com](http://www.continentalaccess.com)  
**631-842-9400**  
salesinfo@cacaccess.com

- Trilogy® standalone electronic access locks
- Networx™ wireless advanced networked locks, Ethernet or 802.11 communications
- Broadest line access locks: PIN code & prox ID Card, Grade 1 Cylindrical, mortise, dual-sided, exit trim, narrow stile & architectural
- K12/University LocDown™ Locking Solutions
- Alarmed exit devices & door alarms
- **Napco Fusion™ Platform-Integrated**

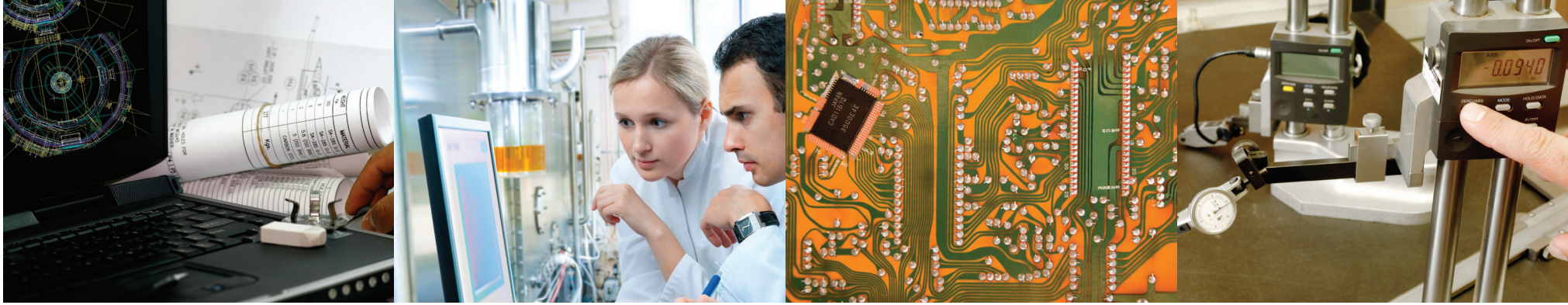
[www.alarmlock.com](http://www.alarmlock.com)  
**1-800-ALA-LOCK**  
salesinfo@alarmlock.com

- Lifetime Warranted Grade 1 & 2 Locksets Mortise, cylindrical, electrified deadbolts, tubular, architectural in all styles, functions & finishes.
- Panic devices, and door closers K12/University LocDown™ Locking Solutions
- Life Safety/Hospital Locksets- Line of ligature resistant door hardware
- Custom Lockset Division
- Ornamental iron & woven wire gate locks
- High security cylinders

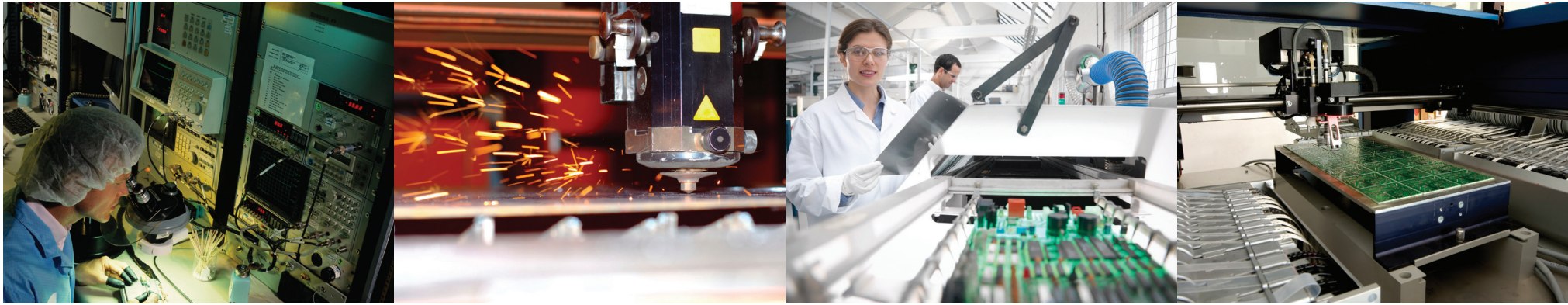
[www.marksusa.com](http://www.marksusa.com)  
**1-800-526-0233**  
salesinfo@marksusa.com



## Security-Focused Innovation, Research & Development



## ISO9001:2000 Quality Manufacturing; 250,000 Square-Foot Dual Factory Facilities



## Expert, Personalized Customer & Technical Service from Napco's **USA** Headquarters. Application-Based Solutions.

