



NAPCO®

333 Bayview Avenue
Amityville, New York 11701
For Sales and Repairs, (800) 645-9445
For Technical Service, (800) 645-9440

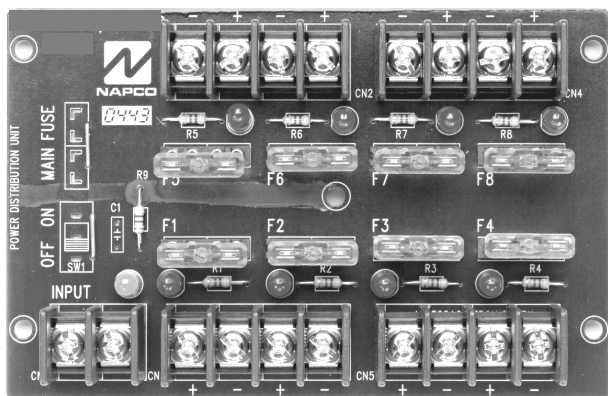
© NAPCO 2005

NP-DMOD-8OUT

8 OUTPUT

POWER DISTRIBUTION MODULE

WI1338B 12/05



DESCRIPTION

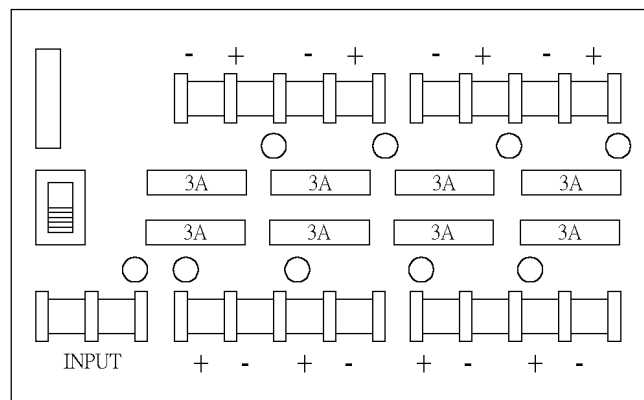
A *Power Distribution Unit*, the NP-DMOD-8OUT easily converts a single AC or DC output power supply into eight (8) individually fused outputs.

FEATURES

- Handles up to 28VAC/VDC.
- Converts a single AC or DC input into eight (8) individually fused outputs (fuses rated @ 3 Amps may be used).
- Power output LED indicator.
- Surge protected outputs.
- Board dimensions: 131.83mm(L) x 85.34mm(W) x 24.6mm(H)

INSTALLATION INSTRUCTIONS

1. Mount NP-DMOD-8OUT in desired location/ enclosure.
2. Connect the desired power supply output to terminals marked [INPUT].
Note: If using DC voltage, right terminal is NEG. (-) and left terminal is POS. (+).
3. Connect each device camera to terminal pairs 1 to 8, marked [+ thru -].
Note: It is important to measure output voltage before connecting devices. This helps avoid potential damage.
All terminals with common suffix "+" are same polarity.
4. Fuses rated at 3 Amps VAC.



APPENDIX LIST

Item	Description	Dimension	Volume	Memo
1	Instruction Sheet	A4	1	
2	Double Stick Foam Tape	60*20*7mm	2	