

# Continental Access

A Napco Security Group Company



## V2.8.x Installation on a Workstation Procedure

**Note: This document is to be used on a new workstation install.**

Revision B

Date: 09/22/2011

CardAccess® 3000 



# CA3000 Software Installation Procedure

---

Continental Access and CardAccess3000 are registered trademarks of Napco Security Group  
Microsoft® is a registered trademark of Microsoft Corporation.  
Windows® is a registered trademark of Microsoft Corporation.  
CardAccess® is a registered trademark of Napco Security Group

Document Title V 2.8.x Installation on a Workstation

This document contains proprietary information of Continental Access. Unauthorized reproduction of any portion of this manual without the written authorization of Continental Access is prohibited. The information in this manual is for informational purposes only. It is subject to change without notice. Companies, names and data used in examples herein are fictitious unless otherwise noted. Continental assumes no responsibility for incorrect information this manual may contain.

Continental Access  
355 Bayview Ave.  
Amityville, NY 11701  
Phone (631) 842-9400  
Fax (631) 842-9135

Web: <http://www.cicaccess.com>

## **License Agreement**

**NOTICE TO USER: THIS PACKAGE IS A CONTRACT. BY OPENING THIS SEALED PACKAGE YOU ACCEPT ALL THE TERMS AND CONDITIONS OF THIS AGREEMENT.**

You may install and use the software only for the purpose intended.

Copyright. You may not duplicate or copy the software or documentation, except that you may make one backup copy of the software. All copies must bear copyright notices contained in the original copy.

Limited Warranty: Continental Access warrants that the software will perform substantially in accordance with the printed documentation when correctly installed on a properly configured computer for which it is intended. Continental Access warrants the discs upon which this product is recorded to be free from defects in materials and workmanship under normal use for a period of 1 year from the date of purchase. During the warranty period Continental Access will replace discs, which prove to be defective.

## **Important Information - Must be read before installing software.**

- 1) This document covers a new CardAccess 3000 V2.8.x workstation installation.
- 2) The installation of a CA3000 Workstation requires a valid V2.8 security key/license on the CA3000 Server/Host. The security key/ license must support 5 or more workstations. If your security key displays “max workstations =1”, no workstations or web clients are supported.
- 3) During the installation of a workstation, you will be prompted to enter the IP address of the CA3000 Server/Host into the client connection utility. Before starting this installation, verify the IP address of the CA3000 host and have it available to enter.
- 4) The workstation you are installing communicates to the CA3000 Server/Host via a network. It is very important to turn off all firewalls on the CA3000 Workstation and the CA3000 Host. To assure proper communications to the CA3000 Server, from the Workstation, you must be able to ping the CA3000 Server from the CA3000 Workstation. You must be able to ping it by IP address and Host name. If unable to ping by IP and hostname, the CA3000 Workstation will not communicate properly with the host.
- 5) If you select to install the Badging3000, you must purchase the EPI Badging3000 licenses from Continental Access. You will be issued two licenses (Designer and Runtime). You must have these license numbers to activate the software.
- 7) It is recommended to install and execute integration features on a workstation (ex. – Badging3000, DVR integration, Napco integration, wireless locks...). You **MUST** have FULL ADMINISTRATOR permissions to install and execute integration features.
- 8) EPI Badging 3000 is not supported on a 64 bit computer. It must be installed and executed on a 32 bit workstation.

## CA3000 v2.8 Workstation PC Recommendations

	Workstation-Event Viewing Only	Workstation-Event Viewing + any one Integration feature (Badging, DVR/NVR, Napco, Scripting, or Dynamic Maps)	Workstation-Event Viewing + any two Integration features (Badging, DVR/NVR, Napco, Scripting, or Dynamic Maps)
<b>Processor</b>	Pentium Core2 Duo, 2.2GHz min	Pentium Core2 Duo, 2.6MHz min	Dual Pentium Core2 Duo, Pentium Quad Core or Pentium Xeon
<b>Ram</b>	2 GB Min	3 GB + Min	3 GB +
<b>Hard Drive</b>	80 GB min	160 GB min	250 GB min
<b>USB Ports</b>	2	4	4
<b>Serial Ports</b>	N/A	N/A	N/A
<b>Parallel Ports</b>	1	1	1
<b>Mouse</b>	PS2 or USB	PS2 or USB	PS2 or USB
<b>Monitor</b>	17" (1024 x 768) min	17" (1024 x 768) min	17" (1024 x 768) min
<b>DVDROM</b>	48x/16x	48x/16x	48x/16x
<b>DVDR</b>	24x/4x Optional	24x/4x Optional	24x/4x Optional
<b>Sound</b>	Recommended	Recommended	Recommended
<b>Network Card</b>	100 NIC Ethernet minimum	100/1000 NIC Ethernet	100/1000 NIC Ethernet
<b>Operating System</b>	Win XP Pro w/SP3, Win 7 Pro 32/64 bit, Win 2003 Server 32/64 bit, or Win 2008 Server 32/64 bit.	Win XP Pro w/SP3, Win 7 Pro 32/64 bit, Win 2003 Server 32/64 bit, or Win 2008 Server 32/64 bit.	Win XP Pro w/SP3, Win 7 Pro 32/64 bit, Win 2003 Server 32/64 bit, or Win 2008 Server 32/64 bit.
<b>Database</b>	N/A	N/A	N/A
<b>Backup</b>	N/A	N/A	N/A
<b>Notes:</b>		For large corporations, hospitals or colleges, a frame video capture card and high-end digital camera is recommended on a badging station. Depending on the amount of photo's needed to be taken per-day on a Badging station; or for other functions the number of DVRs/NVRs or Napco Panels Integrated; or the number of Scripts or Dynamic Maps running additional RAM may be required.	

## Scope

This document contains information regarding the installation of a CardAccess 3000 V2.8.x Workstation. This procedure includes the installation of the EPI Badging3000. It is recommended to install the Badging3000 software on a workstation. If you choose not to install the Badging3000 during this install, some of the following steps/screen shots will be different.

NOTE: The screenshots in this document is for a new CardAccess 3000 installation on a **Windows 7 – 64 bit computer**. The following steps/screen shots will vary if the installation is being performed on a 32 bit computer or other supporting operating systems.

VERY IMPORTANT: Throughout this document, there will be multiple references to the computer requiring a reboot during the prerequisites installation. If this occurs, you **MUST** manually restart the CardAccess 3000 installation setup.

## InstallShield Wizard

If auto start is enabled on your system, the **Auto Play** screen will display after inserting the CA3000 DVD in the DVD drive (Refer to Figure 1). Click **“Run Launch.exe”**. Verify the **CardAccess 3000 Version 2.8 Setup** screen displays (refer to figure 3). Skip ahead to the steps following Figure 3.

**Warning:** If auto start is not enabled on your system, nothing will occur after inserting the CA3000 DVD. Follow the steps below to execute the program.

Click the **Start** menu on your PC. In the **Search Programs and Files** or the **Start/Run** box, type **d:\launch.exe** (Refer to Figure 2). After pressing ENTER, the **CardAccess3000 Version 2.8 setup** screen will display (Refer to Figure 3).

**Note:** “d:” represents the CD-ROM drive letter. This letter will be different depending on the drive letter of your CD-ROM.



Figure 1.



Figure 2.



Figure 3.

Click on the **Install CardAccess 3000** button. The CardAccess 3000 Prerequisites will be installed if they are not currently on the computer.

### *Pre-requisites*

**NOTE:** Only the prerequisites which need to be installed will be listed in the requirements box (Refer to figure 4). During the installation of the prerequisites, the computer might require a reboot. If you are prompted to reboot, click **Yes** or **OK**. After the computer reboots, the CardAccess 3000 setup program must be restarted again (Refer to figures 1, 2 and 3).

## Microsoft .NET Framework Installation (Pre-requisite)

The installation of CardAccess 3000 requires Microsoft .NET Framework 4.0. If this is not currently installed, the CardAccess 3000 installation will install it (Refer to figure 4).

**Reminder:** If the Microsoft .NET Framework 4.0 is already installed on the computer, this process will be skipped. .

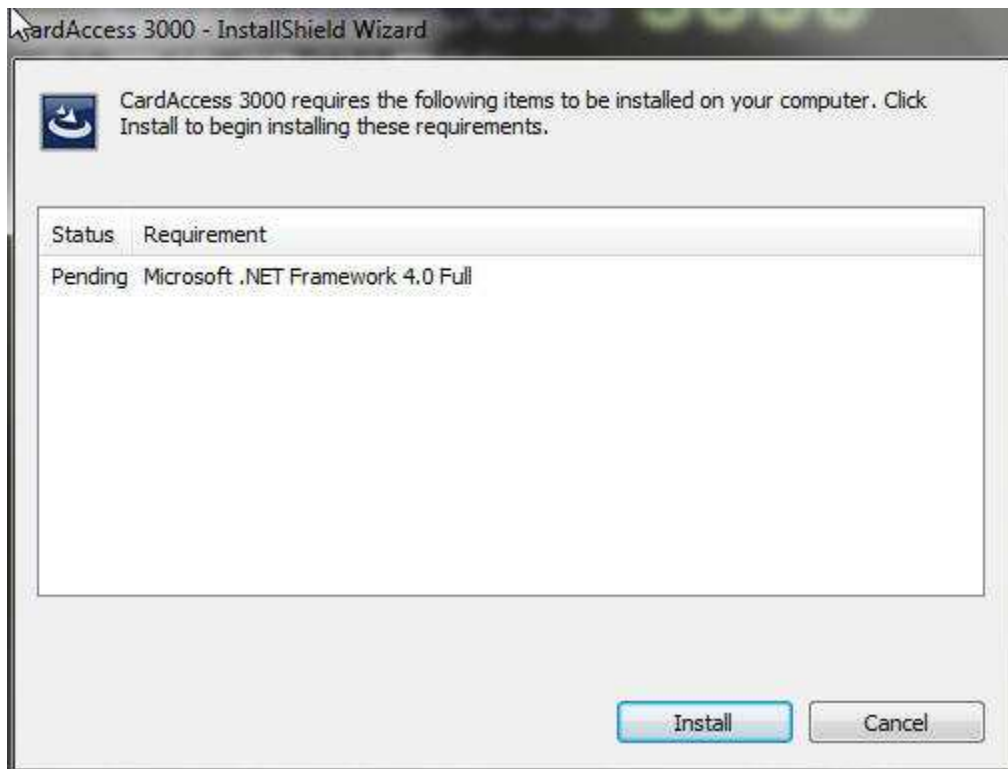


Figure 4.

Click **Install**. After clicking **Install**, a progress bar will display while .NET Framework is installing (Refer to figure 5).

**Note:** The Microsoft .Net Framework 4.0 takes a few minutes to install. **Please be patient.**

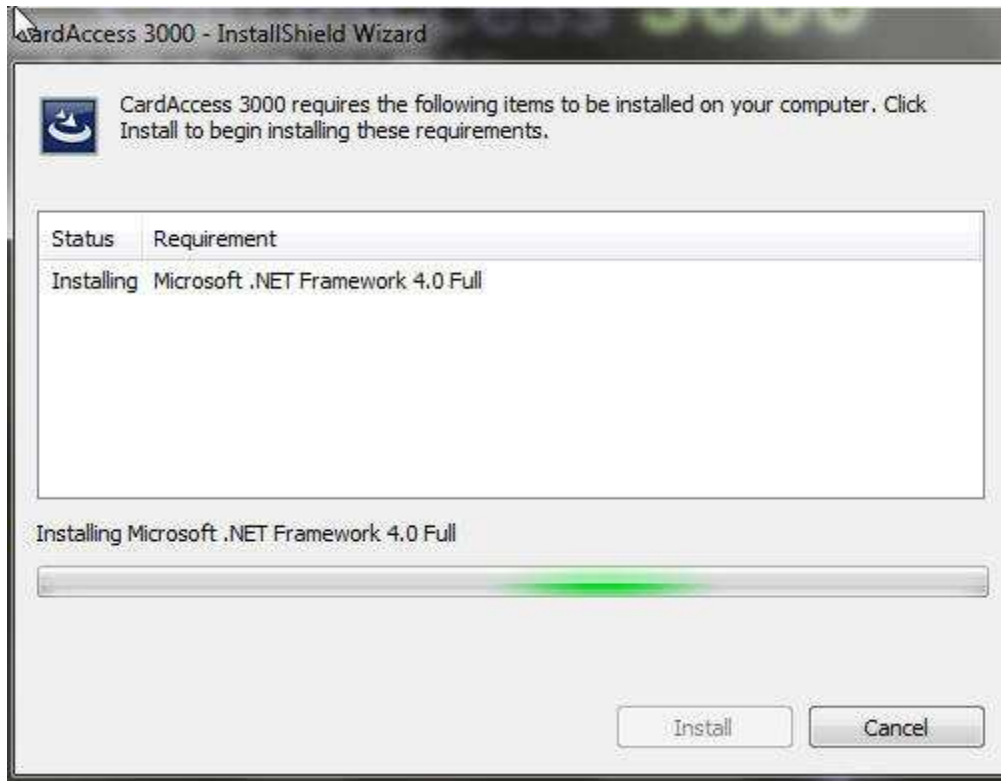


Figure 5.

After the prerequisites are installed, an **Information box** will display **CardAccess 3000 Setup needs to be restarted manually after the Pre-requisites have been installed and computer is restarted** (Refer to Figure 6).

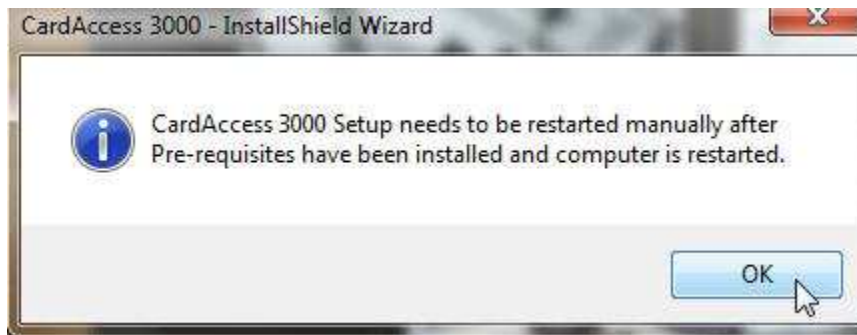


Figure 6.

**VERY IMPORTANT:** If the computer restarts during the installation of pre-requisites, the CardAccess 3000 setup **MUST** be **MANUALLY** restarted. .

Click **OK**. The ADH Source Filter for DirectShow installation will begin (Refer to figure 7).

**NOTE:** If the ADH Source Filter for DirectShow is already installed on the computer, this process will be skipped.

## ADH Source Filter for DirectShow (Pre-requisite)

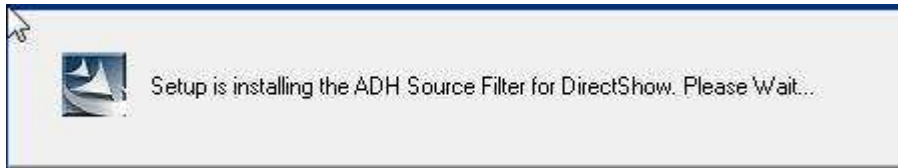


Figure 7.

Note: As part of the ADH Source Filter for DirectShow installation, the VC++ Run Time libraries will be installed if needed (Refer to figures 8 and 9).



Figure 8.

Click **Install**. The **VC++ Run Time libraries** will install (Refer to figure 9).

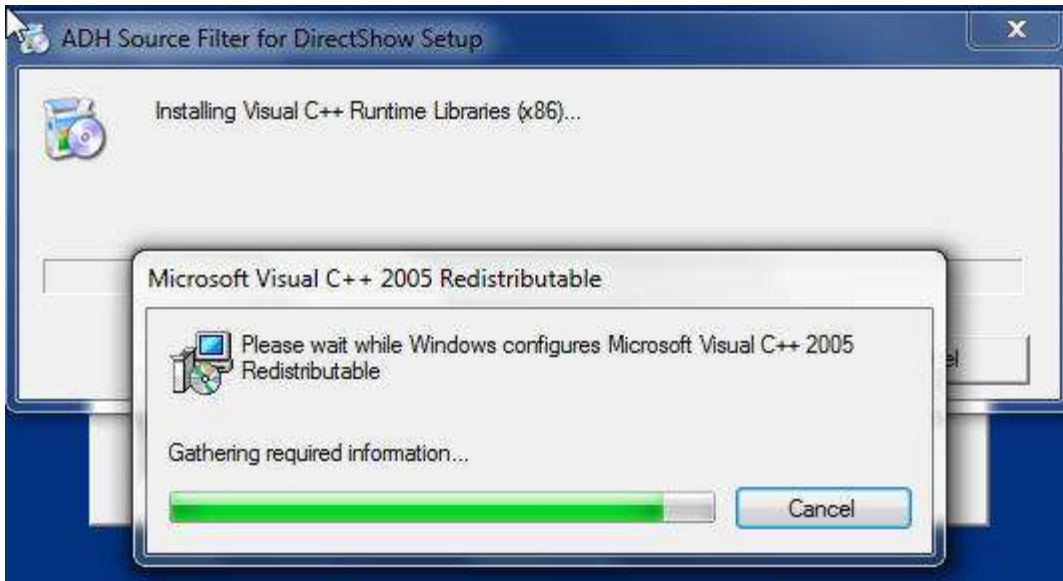


Figure 9.

After the completion of the Visual C++ libraries installation, the **ADH Source Filter for DirectShow Setup Wizard** will install (Refer to figure 10).



Figure 10.

Click **Next**. The **Select Installation Folder** for DirectShow screen will display (Refer to figure 11).



Figure 11.

Note: The above Program Files path is **\Program Files[x86]**. This will display on a 64 bit computer. On a 32 bit computer, it will be **\Program Files\**.

Click **Next**. The **Confirm Installation** screen will display (Refer to figure 12).

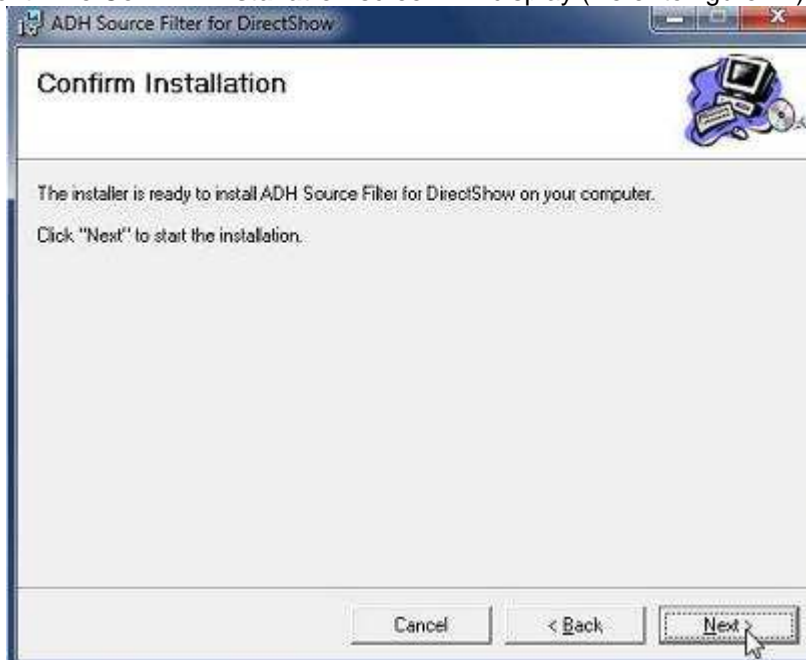


Figure 12.

Click **Next**. A progress bar will display while the **ADH Source Filter for DirectShow** installs (Refer to figure 13).



Figure 13.  
At the completion of the ADH Source Filter for DirectShow installation, the Installation Complete screen displays (Refer to figure 14).

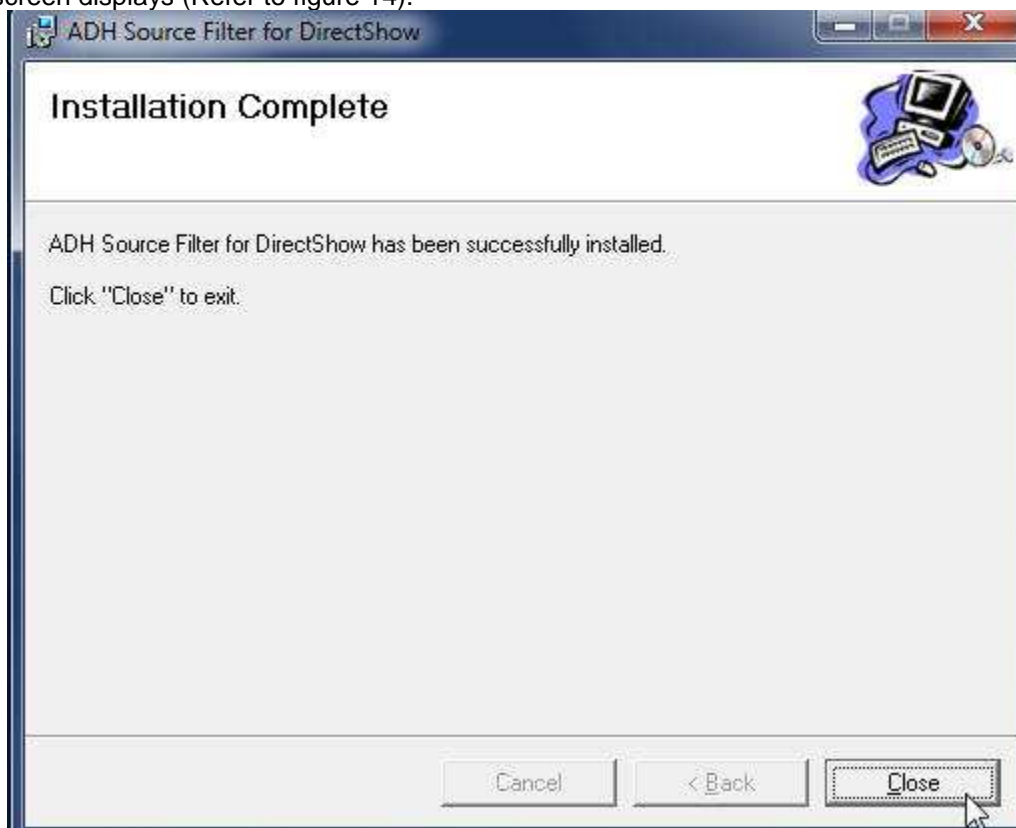


Figure 14.

Click **Close**. The **Welcome to the CardAccess 3000 Setup Program** screen displays (Refer to figure 15).

## *CardAccess 3000 Setup*

The CardAccess 3000 **InstallShield Wizard** screen will display for a short period while CardAccess 3000 is preparing to install.

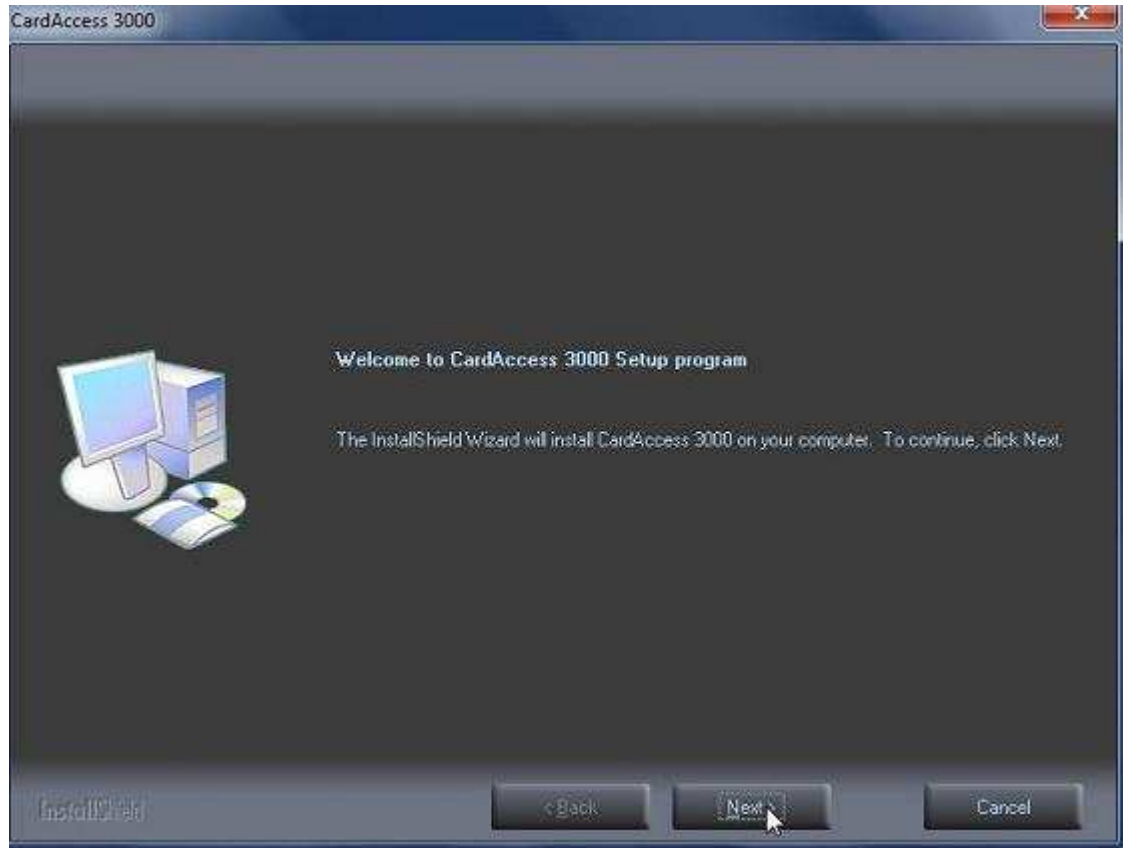


Figure 15.

Click **Next**. The **Select CardAccess Server Type** screen will display (Refer to Figure 16).

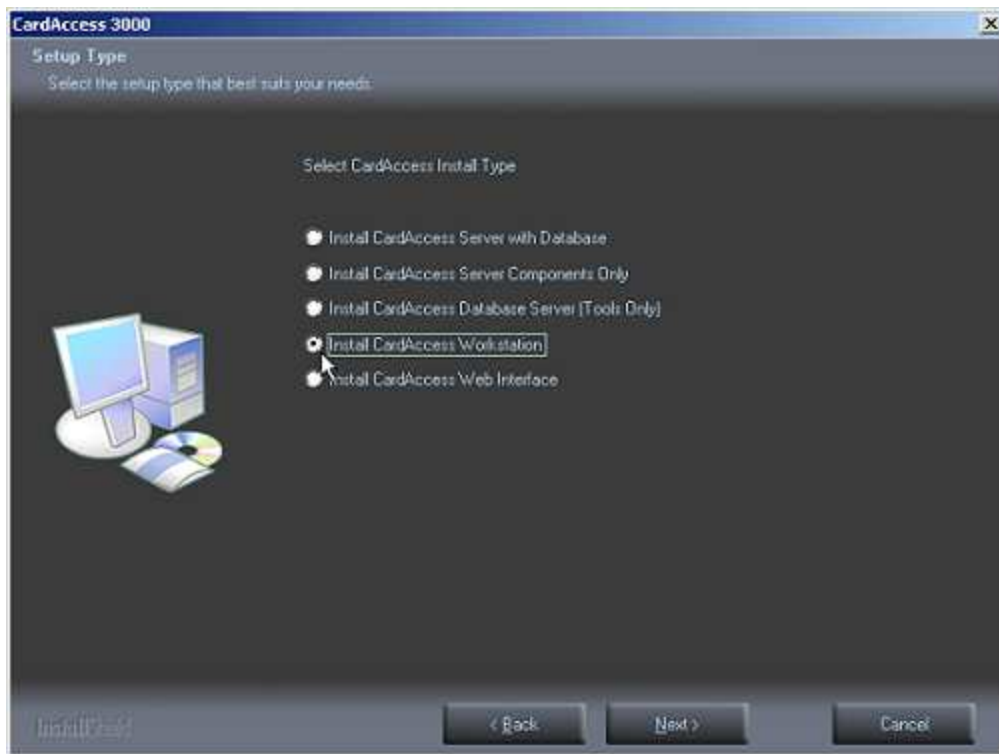


Figure 16.  
Click the **Install CardAccess Workstation** option. Click **Next**. The **Select CardAccess Destination Folder** screen will display (Refer to Figure 17).

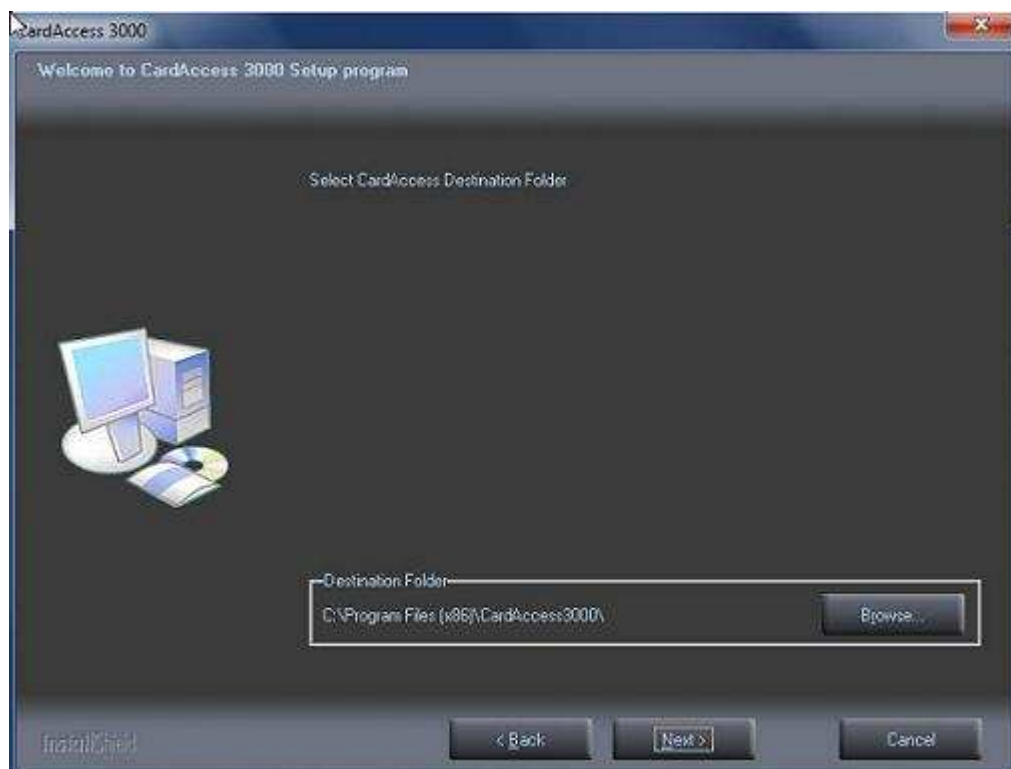


Figure 17.

The default path will display. If you are installing CardAccess 3000 to a different path, click the **Browse** button and select the path.

NOTE: CardAccess 3000 must be installed under a Program Files folder. It is highly recommended to use the default path. As previously mentioned, the Program Files path on a **64 bit computer** will be **\Program Files[x86]\**.

Click **Next**. The **Select Additional CardAccess components** screen will display (Refer to Figure 18).

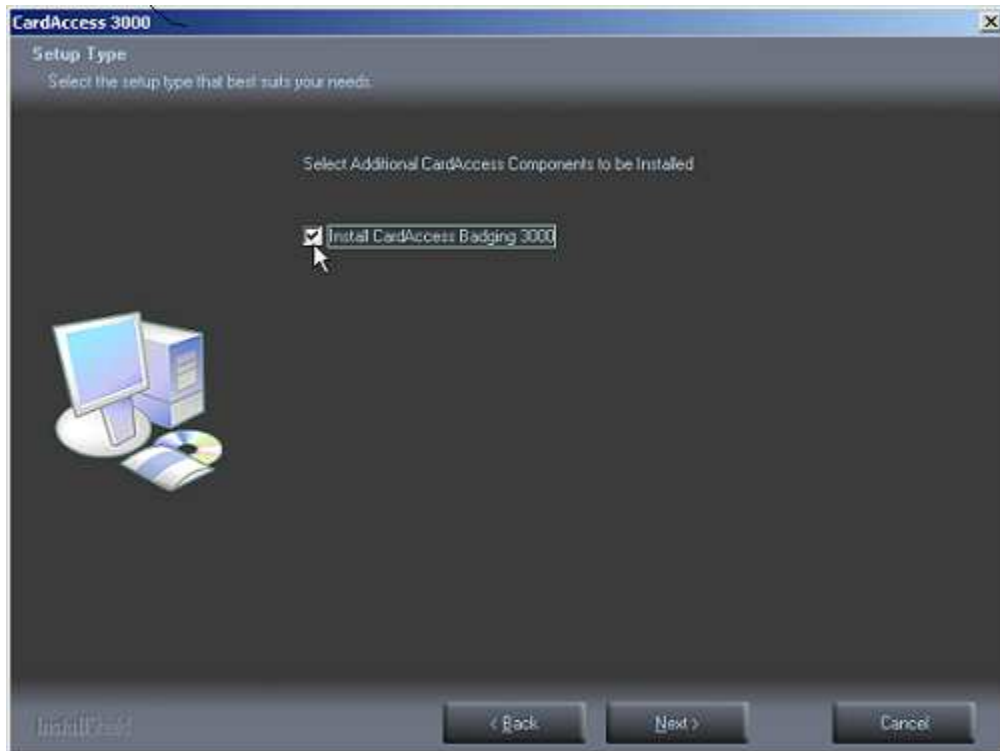


Figure 18.

Select the **Install CardAccess Badging 3000** checkmark.

NOTE: If you didn't purchase the Badging 3000 licenses, it is OK to install the Badging 3000 software now. You will not be able to activate the Badging 3000 software unless you purchase the two EPI licenses (Designer and Runtime) at a later date.

If you choose not to install the Badging 3000, do not select the **Install CardAccess Badging 3000** checkmark (Note: Some of the following screens will not display if you do not install the Badging 3000).

Click **Next**. The **Current Settings** screen will display (Refer to Figure 19).

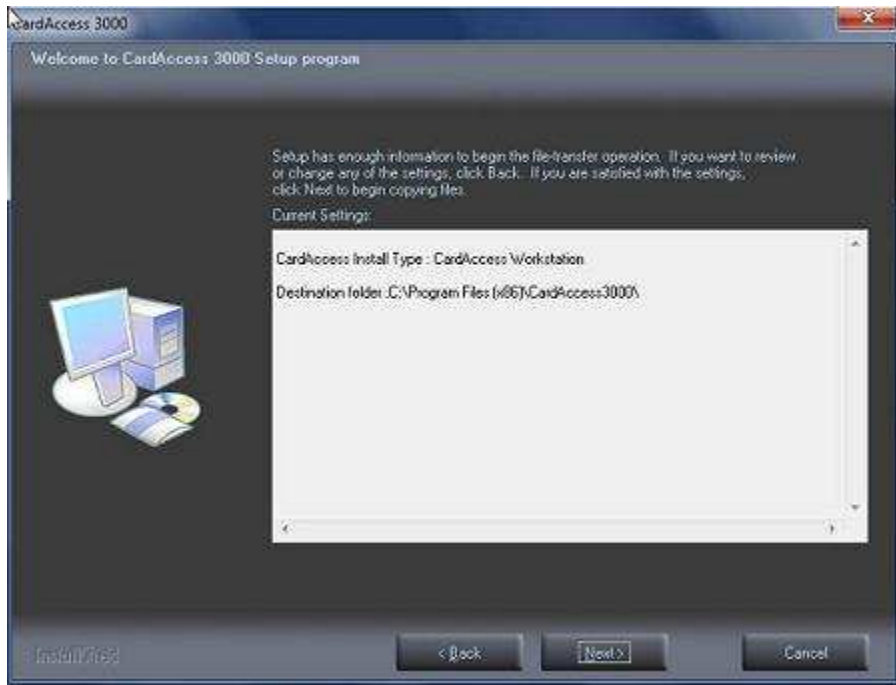


Figure 19.

After reviewing the current settings, click **Next**. A progress bar will display while CardAccess 3000 is installing (Refer to Figure 20).

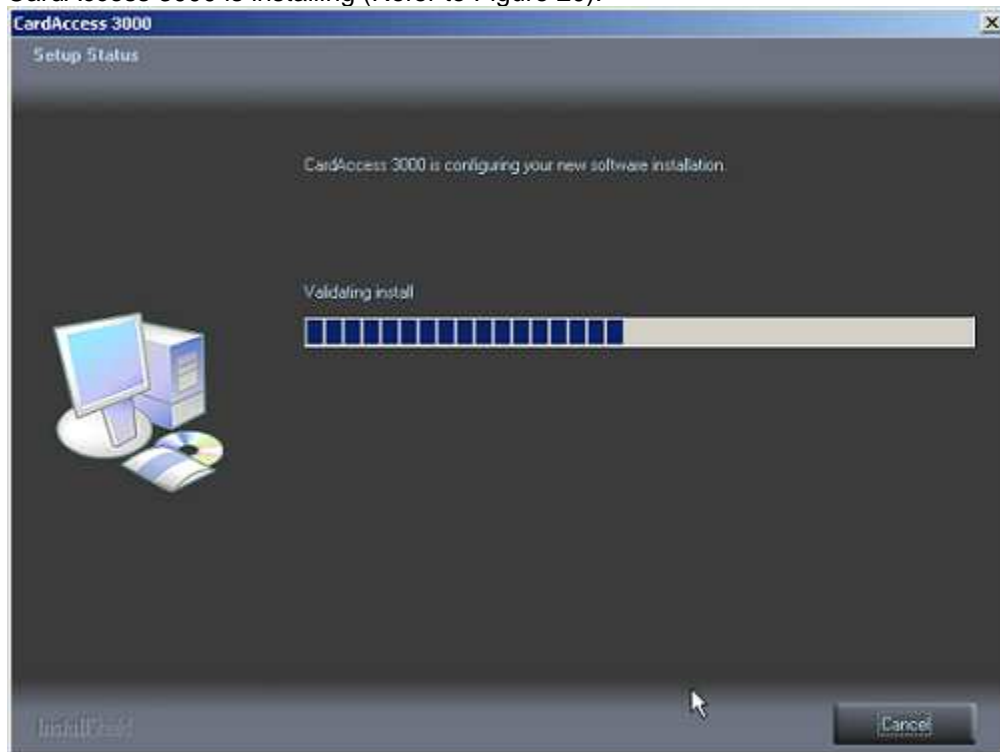


Figure 20.

After the completion of the CardAccess 3000 installation, the **Client Connection** utility screen will display (Refer to figure 21 - 25).

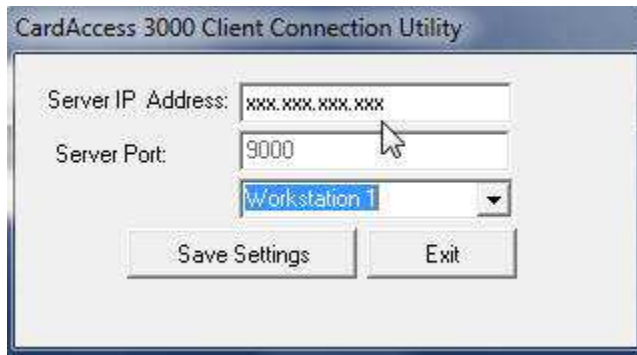


Figure 21.

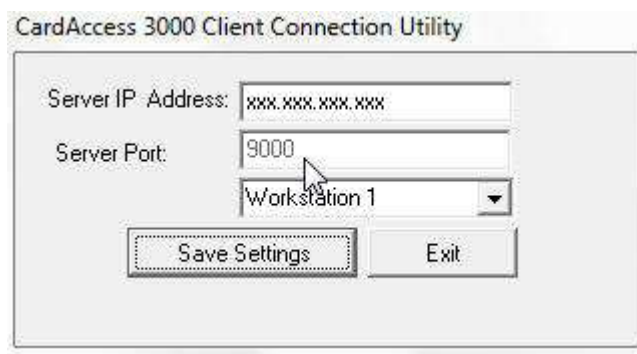


Figure 22.

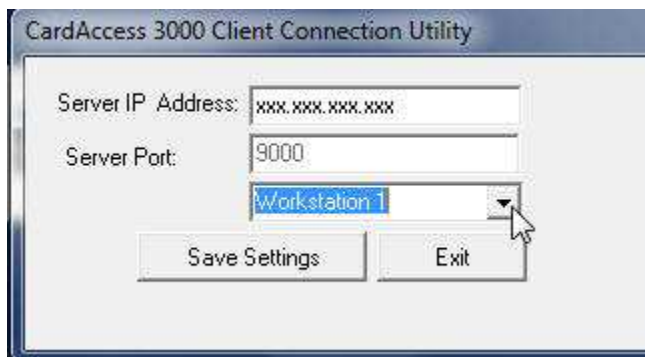


Figure 23.

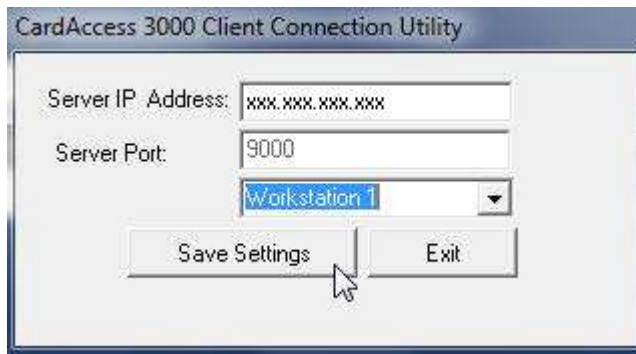


Figure 24.



Figure 25.

**WARNING:** If the following settings are not configured properly, the CardAccess 3000 workstation will fail to launch:

- **Server IP Address** – You must configure for the IP address of the CardAccess 3000 Server/Host (Refer to figure 21).
- **Server Port** number = Set to default of 9000 (Refer to figure 22).
- **Host/Workstation** = Select Workstation 1 (Refer to figure 23).

Click **Save Settings** (Refer to figures 24 and 25).

Click **Exit**. The **Readme Information** screen will display (Refer to figure 26).

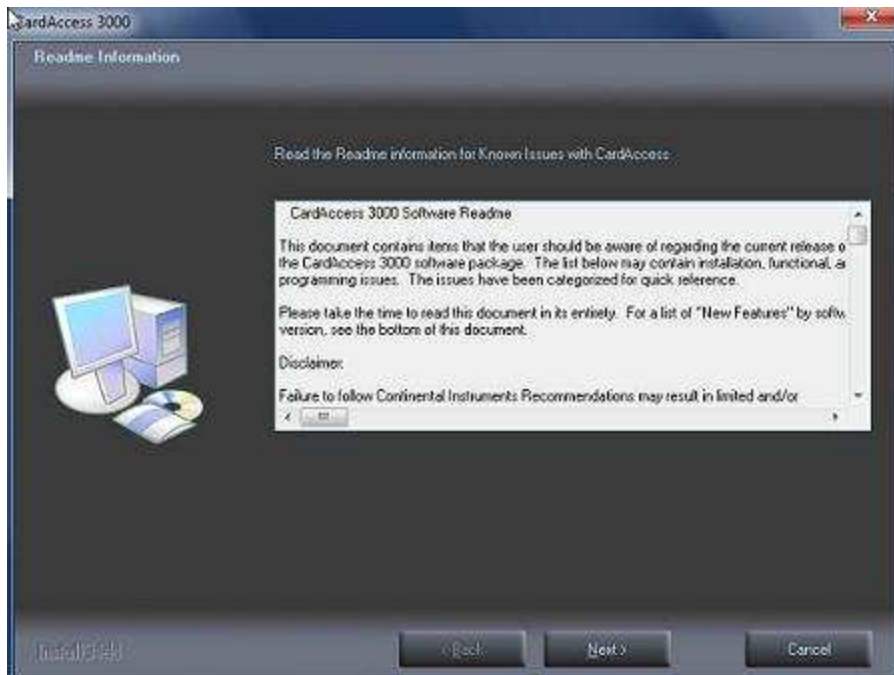


Figure 26.  
After reviewing the CardAccess 3000 Software Readme, click **Next**. The **InstallShield Wizard Complete** screen will display (Refer to Figure 27).

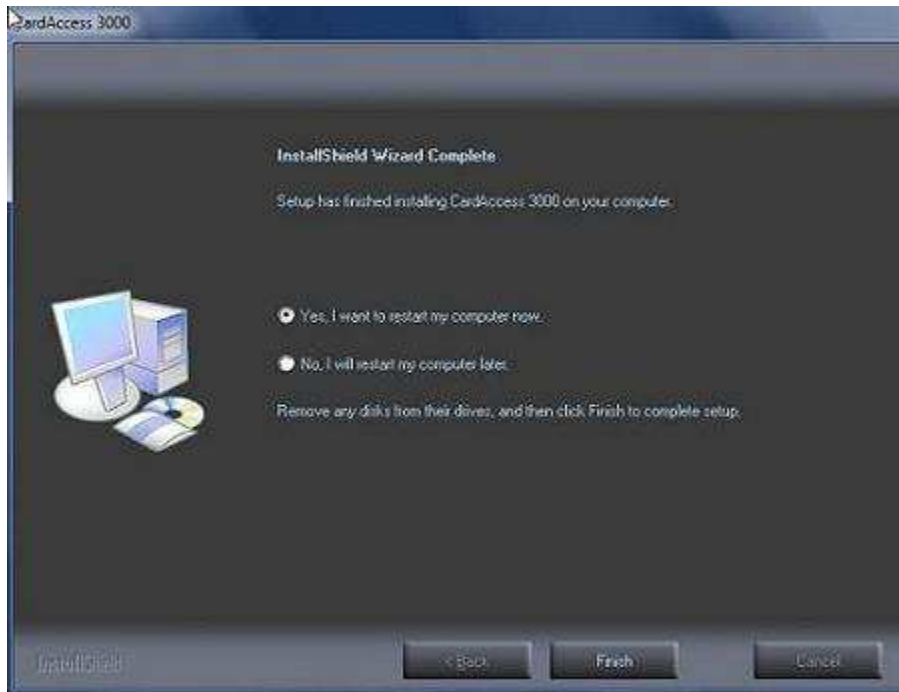


Figure 27.  
Select the **Yes, I want to restart my computer now** option is selected. This should be selected by default.

Click **Finish**. The **Badging 3000 will be installed after your computer reboots, Please leave the CardAccess CD in the CD tray** screen will display (Refer to Figure 28).



Figure 28.

Click **OK**. The computer will restart.

If you didn't select to install the Badging3000, the installation is complete after the computer reboots. If you are installing Badging3000, the **Welcome to the InstallShield Wizard for EPI Builder Run-Time 6** screen will display (Refer to Figure 29).



Figure 29.

Click **Next**. The **License Agreement** screen will display (Refer to Figure 30).



Figure 30.

After reviewing the license agreement, select **I accept the terms in the license agreement**. Click **Next**. The **Customer Information** screen will display (Refer to Figure 31).



Figure 31.

Enter the User Name and Organization. Click **Next**. The **Ready to Install Program** screen will display (Refer to Figure 32).

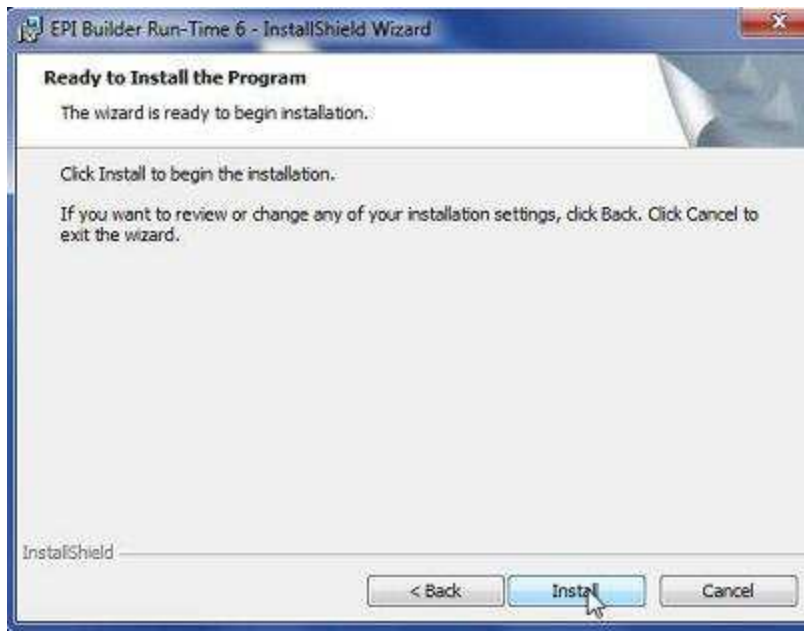


Figure 32.

Click **Install**. The **Installing EPI Builder Runtime 6** screen will display (Refer to Figure 33).

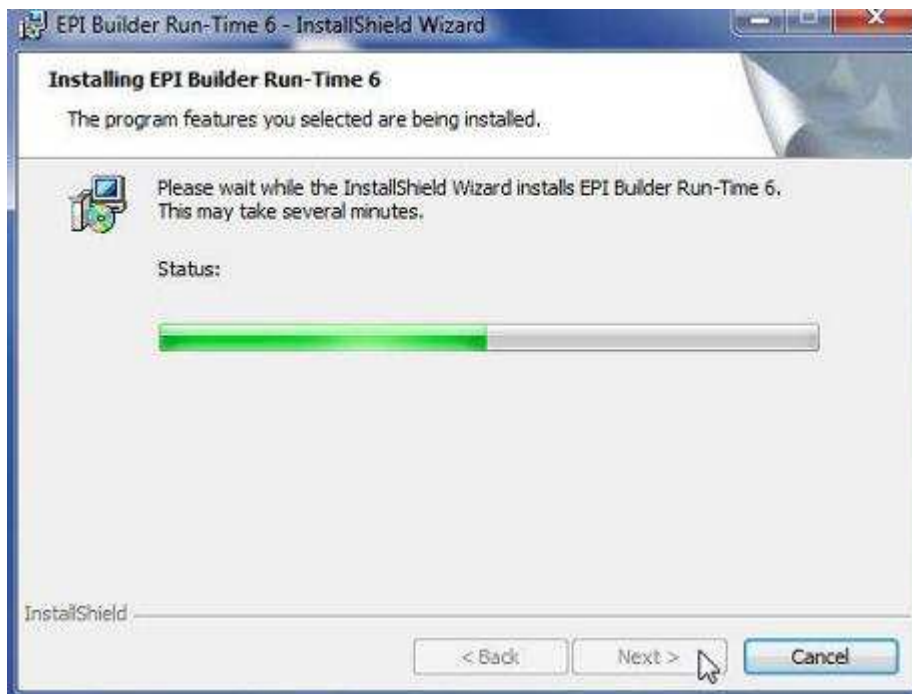


Figure 33.

After the completion of the EPI Builder Runtime 6, the **InstallShield Wizard Completed** screen will display (Refer to Figure 34).



Figure 34.

Click **Finish**. The CardAccess installation is now complete.