

# Continental Access

A Napco Security Group Company



## V2.8.x Installation on a Server/Host Procedure

**Note:** This document is to be used on a new install. If upgrading from an earlier version, refer to the appropriate CardAccess3000 upgrade procedure.

REVISION B

DATE: 9/22/2011



# CA3000 Software Installation Procedure

---

Continental Access and CardAccess3000 are registered trademarks of Napco Security Group

Microsoft® is a registered trademark of Microsoft Corporation.

Windows® is a registered trademark of Microsoft Corporation.

CardAccess® is a registered trademark of Napco Security Group

Document Title V 2.8.x Installation on a Server/Host Procedure

This document contains proprietary information of Continental Access. Unauthorized reproduction of any portion of this manual without the written authorization of Continental Access is prohibited. The information in this manual is for informational purposes only. It is subject to change without notice. Companies, names and data used in examples herein are fictitious unless otherwise noted. Continental assumes no responsibility for incorrect information this manual may contain.

Continental Access  
355 Bayview Avenue  
Amityville, NY 11701  
Phone (631) 842-9400  
Fax (631) 842-9135

Web: <http://www.cicaccess.com>

## **License Agreement**

**NOTICE TO USER: THIS PACKAGE IS A CONTRACT. BY OPENING THIS SEALED PACKAGE YOU ACCEPT ALL THE TERMS AND CONDITIONS OF THIS AGREEMENT.**

Use of the Software: You may install and use the software only for the purpose intended.

Copyright. You may not duplicate or copy the software or documentation, except that you may make one backup copy of the software. All copies must bear copyright notices contained in the original copy.

Limited warranty: Continental Access warrants that the software will perform substantially in accordance with the printed documentation when correctly installed on a properly configured computer for which it is intended. Continental Access warrants the discs upon which this product is recorded to be free from defects in materials and workmanship under normal use for a period of 1 year from the date of purchase. During the warranty period Continental Access will replace discs, which prove to be defective.

## Important Information - Must be read before installing software.

- 1) This document covers a new CardAccess 3000 V2.8.x installation.
- 2) Cardaccess3000 Version 2.8.x uses SQL2005 or SQL2008 R2 depending if it's a new install or an upgrade. On a new installation, SQL 2008 R2 Express is installed and used. If it's an upgrade from V2.6.x or V2.7.x, the existing SQL 2005 is used. Any other versions of SQL are not supported and must be removed from the computer prior to installing the CardAccess3000 V2.8.x.
- 3) If you have Cardaccess3000 V2.5.16 or earlier, you must uninstall it completely including SQL 2000, prior to installing the Cardaccess3000 V2.8.x.

**Note:** Refer to the "Upgrading CA3000 to V2.6" document if you are upgrading from Cardaccess3000 V2.5.16 or earlier.

- 4) Refer to the recommended computer specifications to determine if a full version of SQL2005 or SQL2008 R2 should be used rather than the SQL Express that is installed during the CardAccess3000 installation.
- 5) Verify you have a physical security key or a software license for Cardaccess3000 V2.8.x. Security keys and software licenses from previous versions of CardAccess3000 are not compatible with this version. If you have a V.2.8.x security key, it will work on all V2.8.x versions.

**VERY IMPORTANT:** Do not insert the hardware security key in the USB port until the installation of CardAccess3000 is complete.

## CA3000 v2.8.x Server/Host PC Recommendations

	Server (1-4 Workstations)	Server (5-19 Workstations)	Server (20-49 Workstations)
<b>Processor</b>	Pentium Dual Core, 2.6GHz (min)	Xeon Quad Core 2.0GHz (min)	2 x Xeon Quad Core 2.0GHz (min)
<b>Ram</b>	2.0 GB Min/ 3GB+ for Win7 and Win Server 2008	4.0 GB Min	8 GB Min
<b>Hard Drive</b>	300 GB	500 GB	Raid 5 - 3 drives minimum
<b>USB Ports</b>	4 Min	4 Min	4 Min
<b>Serial Ports</b>	Optional - 1 expandable to 64	Optional - 1 expandable to 128	Optional - 1 expandable to 128
<b>Parallel Ports</b>	Optional - 1	Optional - 1	Optional - 1
<b>Mouse</b>	PS2 or USB	PS2 or USB	PS2 or USB
<b>Monitor</b>	17" SVGA (1024x768)	17" SVGA (1024x768)	17" SVGA (1024x768)
<b>DVDROM</b>	48x/16x	48x/16x	48x/16x
<b>DVDR</b>	24x/8x	24x/8x	24x/8x
<b>Sound</b>	Optional but Stand-Alone recommended	Optional	Optional
<b>Network Card</b>	100/1000 Mb NIC Ethernet	100/1000 Mb NIC Ethernet	100/1000 Mb NIC Ethernet
<b>Operating System</b>	Win XP Pro w/SP3, Win 7 Pro 32/64 bit, Win 2003 Server 32/64 bit, or Win 2008 Server 32/64 bit.	Win XP Pro w/SP3, Win 7 Pro 32/64 bit, Win 2003 Server 32/64 bit, or Win 2008 Server 32/64 bit.	Win XP Pro w/SP3, Win 7 Pro 32/64 bit, Win 2003 Server 32/64 bit, or Win 2008 Server 32/64 bit.
<b>Database</b>	MSSQL 2005/2008 R2 Express or MSSQL Server 2005/2008 R2 for higher performance	MSSQL Server 2005/2008 R2 recommended	MSSQL Server 2005/2008 R2 recommended
<b>Backup</b>	Tape / CD / DVD / Network	Tape / CD / DVD / Network	Tape / CD / DVD / Network
<b>System Size</b>	This is the recommended PC server specification for a system with up to four workstations. It can be used for a stand-alone system, a workstation or a CA3000 Server. For high transaction environments some specifications may change.	This is the recommended PC specification for a CA3000 Server supporting up to nineteen workstations. For high transaction environments some specifications may change.	This is the recommended PC specification for a CA3000 Server supporting up to forty nine workstations. For high transaction environments some specifications may change. For larger systems please consult with Continental Access.
<b>Notes:</b>	(1) If using SQLExpress, the database size should not exceed 4GB. (2) Disk drive usage is dependent on the number of transactions kept in backup. (3) Additional RAM will improve performance (4) It is best to perform badging and other integration functions on a workstation, not the server.		

\*\*\* Other than a small Stand-Alone system, Continental Access does not recommend running Photo-badging, DVR/NVR Integration, Napco Integration, Scripting, or Dynamic Maps from a Host machine. Please refer to our Workstation Recommendation below for these specifications. \*\*\*

## Scope

This document contains information regarding a new installation of CA3000 V2.8.x (CardAccess Server with Database). This procedure doesn't include the installation of the EPI Badging3000. It is recommended to install the EPI Badging3000 on a workstation. If you choose to install the EPI Badging3000 during this install, some of the following steps/screens will be different.

**VERY IMPORTANT:** The screenshots in this document is for a new CardAccess 3000 installation on a **Windows 7 – 64 bit computer**. The following screenshots will vary if the installation is being performed on a 32 bit computer or other supported operating systems.

## InstallShield Wizard

If auto start is enabled on your system, the **Auto Play** screen will display after inserting the CA3000 DVD in the DVD drive (Refer to Figure 1). Click "**Run Launch.exe**". Verify the **CardAccess 3000 Version 2.8 Setup** screen displays (refer to figure 3). Skip ahead to the steps following Figure 3.

**Warning:** If auto start is not enabled on your system, nothing will occur after inserting the CA3000 DVD. Follow the steps below to execute the program.

Click the **Start** menu on your PC. In the **Search Programs and Files** box or Start/Run box, type **d:\launch.exe** (Refer to Figure 2). After pressing ENTER, the **CardAccess3000 Version 2.8 setup** screen will display (Refer to Figure 3).

**Note:** "d:" represents the CD-ROM drive letter. This letter will be different depending on the drive letter of your CD-ROM.



Figure 1.



Figure 2.



Figure 3.

Click on the **Install CardAccess 3000** button. The CardAccess 3000 Prerequisites will be installed if they are not currently on the computer.

### *Pre-requisites*

**NOTE:** Only the prerequisites which need to be installed will be list in the requirement box (Refer to figure 4). During the installation of the prerequisites, the computer might require a reboot. If you are prompted to reboot, click YES or OK. After the computer reboots, the CardAccess 3000 setup program must be restarted again (Refer to figures 1, 2, and 3).

## Microsoft .NET Framework Installation (Pre-requisite)

The installation of CardAccess3000 requires Microsoft .NET Framework 2.0, 3.5 and 4.0. If these are not currently installed, the CA3000 installation will install it (Refer to figure 4).

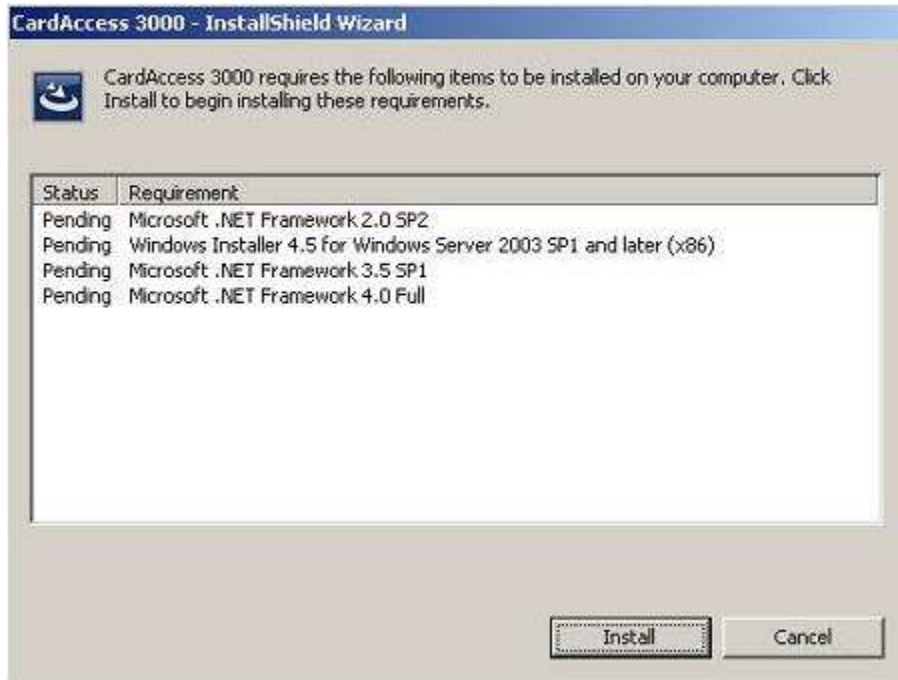


Figure 4.

Click **Install**. After clicking **Install**, a progress bar will display while the prerequisites are installing.

**Reminder:** During the installation of the prerequisites, the computer might require a reboot. If you are prompted for a restart, Click Yes or OK. .

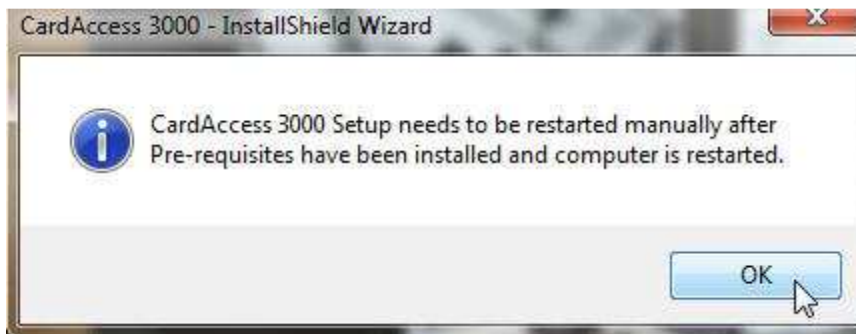


Figure 5.

After completion of the .NET Frameworks installation, the ADH Source Filter for DirectShow installation will begin (Refer to figure 6).

**Reminder:** If the ADH Source Filter for DirectShow is already installed on the computer, this process will be skipped. .

### *ADH Source Filter for DirectShow (Pre-requisite)*

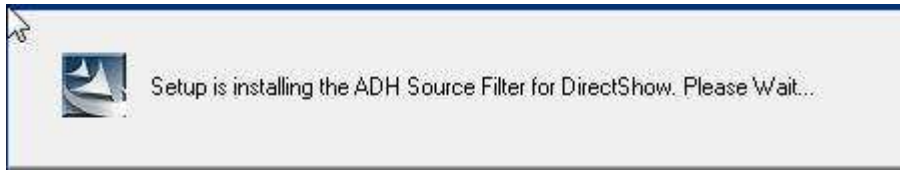


Figure 6.

Note: As part of the ADH Source Filter for DirectShow installation, the VC++ Run Time libraries will be installed if needed (Refer to figures 7 and 8).



Figure 7.

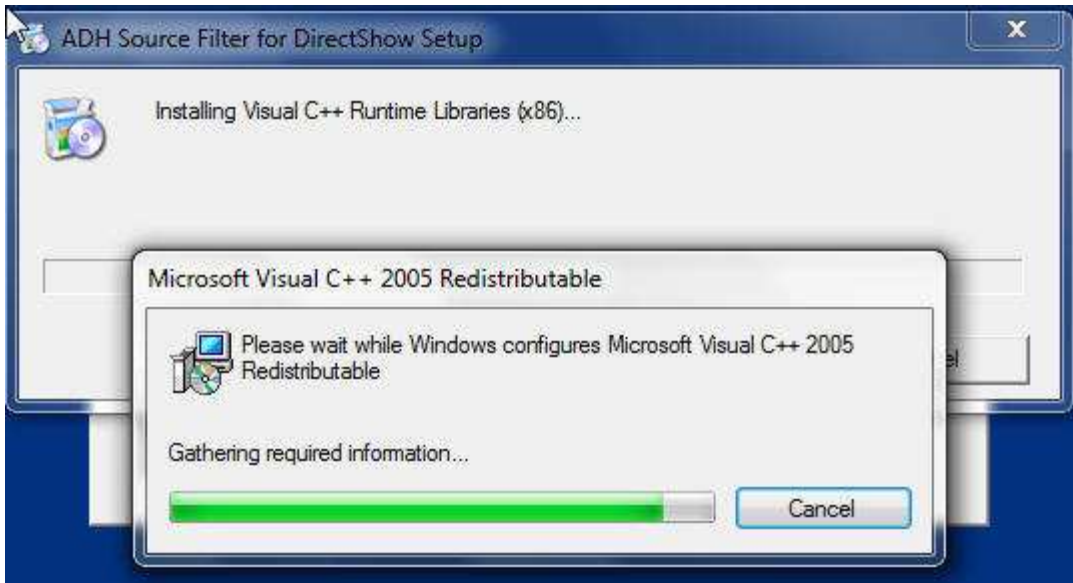


Figure 8.

After the completion of the Visual C++ libraries, the ADH **Source Filter for DirectShow Setup Wizard** will install (Refer to figure 9).



Figure 9.

Click **Next**. The ADH Source Filter for DirectShow Installation Folder screen will display (Refer to figure 10).



Figure 10.

Click **Next**. The **Confirm Installation** screen will display (Refer to figure 11).

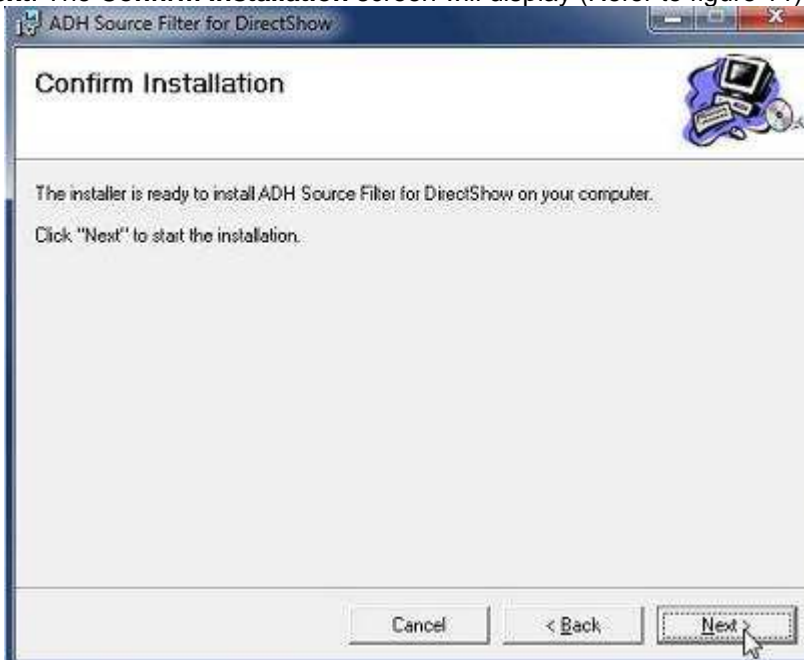


Figure 11.

Click **Next**. A progress bar will display while the ADH Source Filter for DirectShow installs (Refer to figure 12).

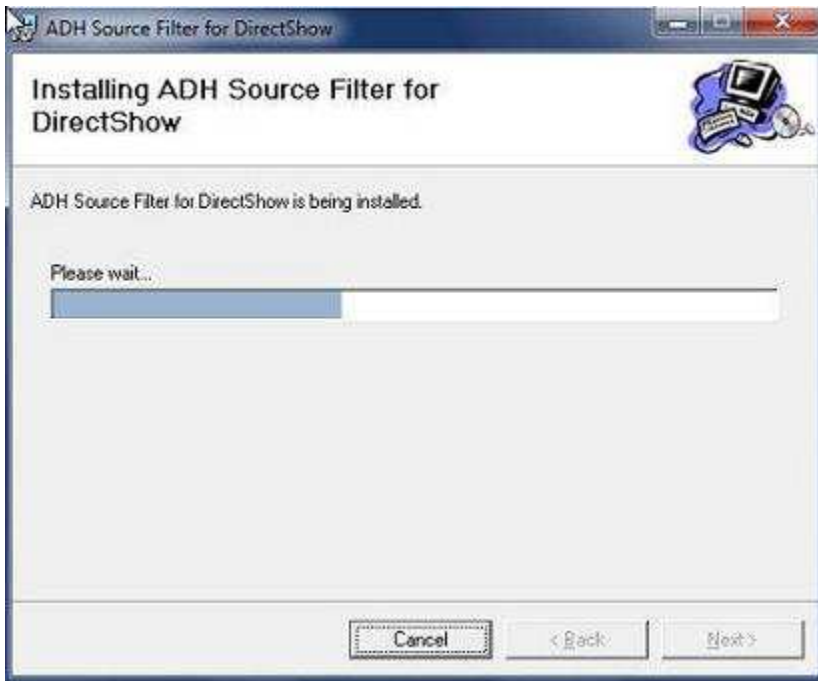


Figure 12.

At the completion of the ADH Source Filter for DirectShow installation, the Installation Complete screen displays (Refer to figure 13).

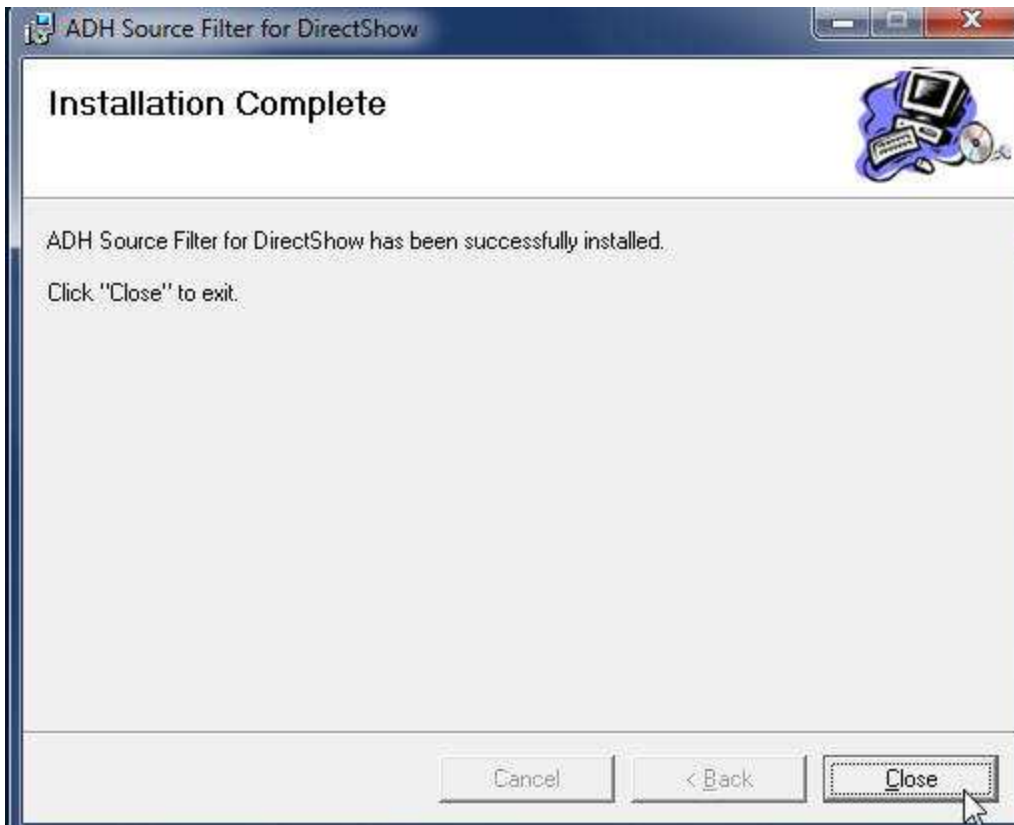


Figure 13.

Click **Close**. An **Information** box will display **CardAccess 3000 Setup needs to be restarted manually after the Pre-requisites have been installed and computer is restarted** (Refer to Figure 14).

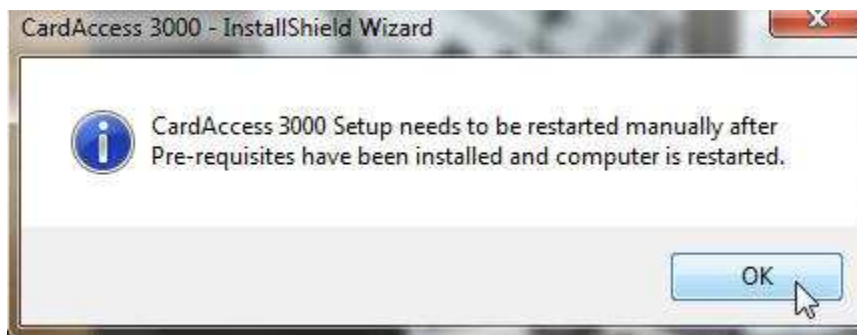


Figure 14.

**VERY IMPORTANT:** If the computer restarts during the installation of pre-requisites, this message box advises that the CA3000 setup must manually be restarted again. If the computer doesn't restart, Click **OK**. The **Welcome to the CardAccess 3000 Setup Program** screen displays (Refer to figure 15).

## CardAccess 3000 Setup

The CardAccess 3000 **InstallShield Wizard** screen will display for a short period while CardAccess 3000 is preparing to install. After the CardAccess 3000 **InstallShield** wizard is complete, the **Welcome to CardAccess 3000 setup program** screen displays (Refer to Figure 15).

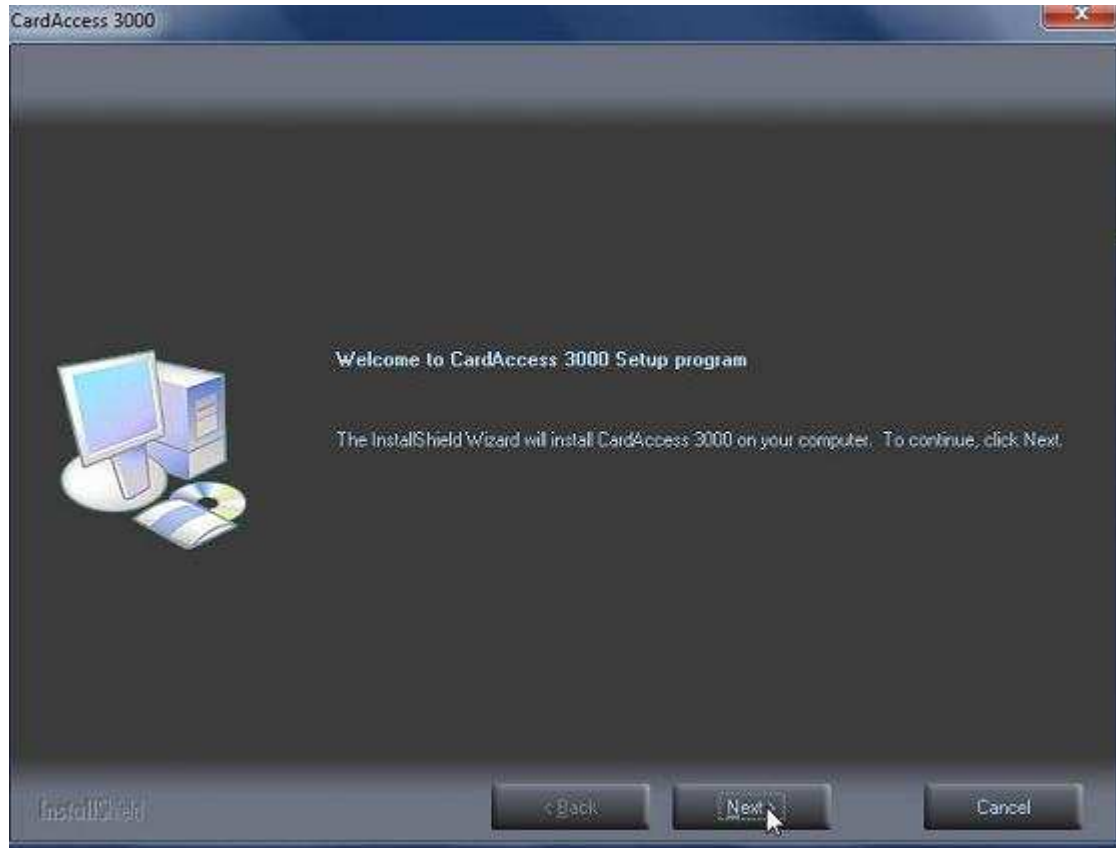


Figure 15.

Click **Next**. The **Select CardAccess Server Type** screen will display (Refer to Figure 16).

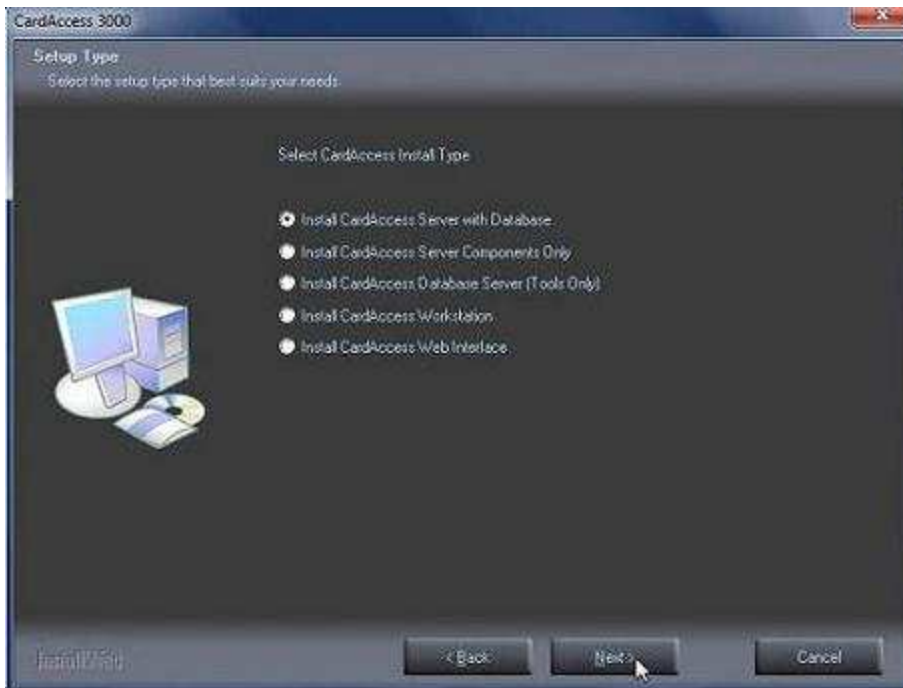


Figure 16.

Select the **Install CardAccess Server with Database** option (this option should be selected by default).

Click **Next**. The **Select CardAccess Destination Folder** screen will display (Refer to Figure 17).

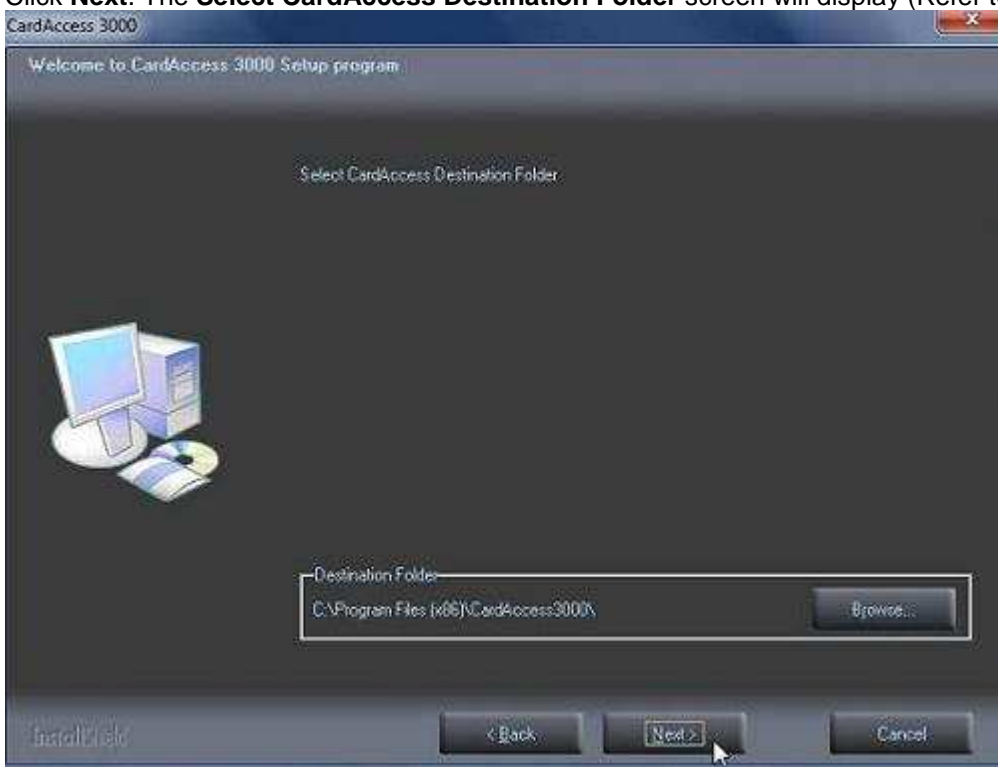


Figure 17.

A default installation path will display. If you are installing CardAccess 3000 to a different path, click the **Browse** button and select the path.

NOTE: The above screen shot is from an installation on a 64 bit computer. On a 64 bit computer, a second Program Files folder is created. The folder name is **Program Files [x86]**. CardAccess 3000 V2.8 will be installed in this folder on a 64 bit computer.

Click **Next**. The **Select Additional CardAccess Components to be installed** screen will display (Refer to Figure 18).

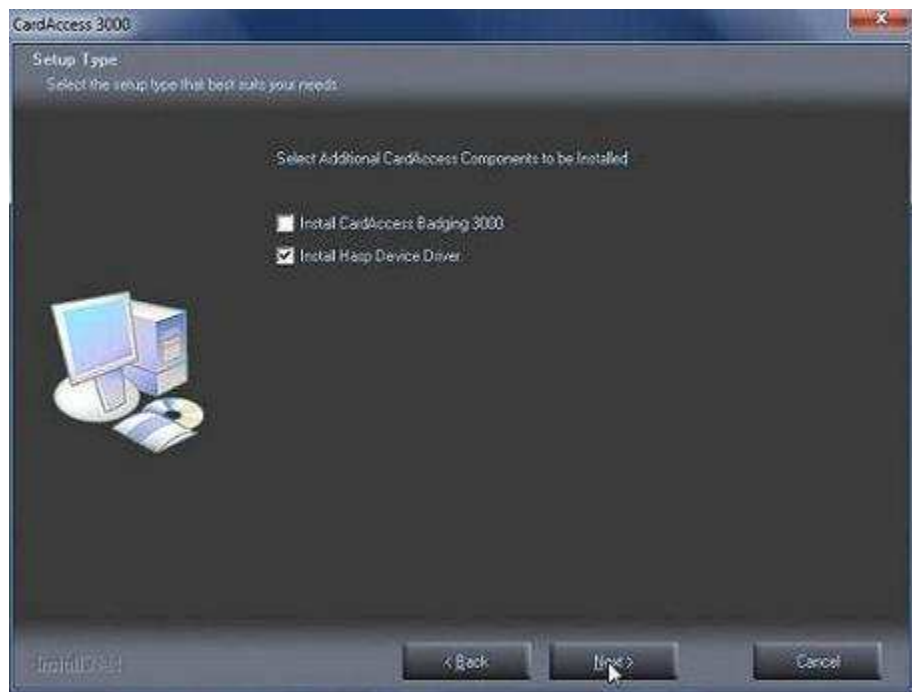


Figure 18.

By default, the **Install Hasp Device Driver** is the only option selected. It is not recommended to install the Badging3000 on a CardAccess 3000 server/host. It is recommended to install it on a CardAccess 3000 workstation.

Click **Next**. The **Current Settings** screen will display (Refer to Figure 19).

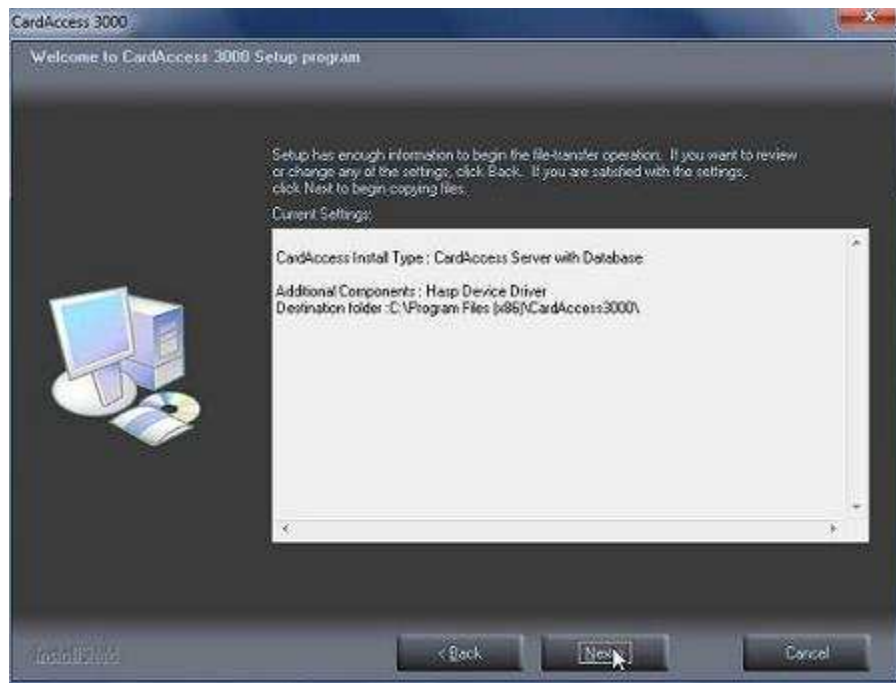


Figure 19.

After reviewing the current settings, click **Next**. A progress bar will display while the CardAccess 3000 is installing (Refer to Figure 20).

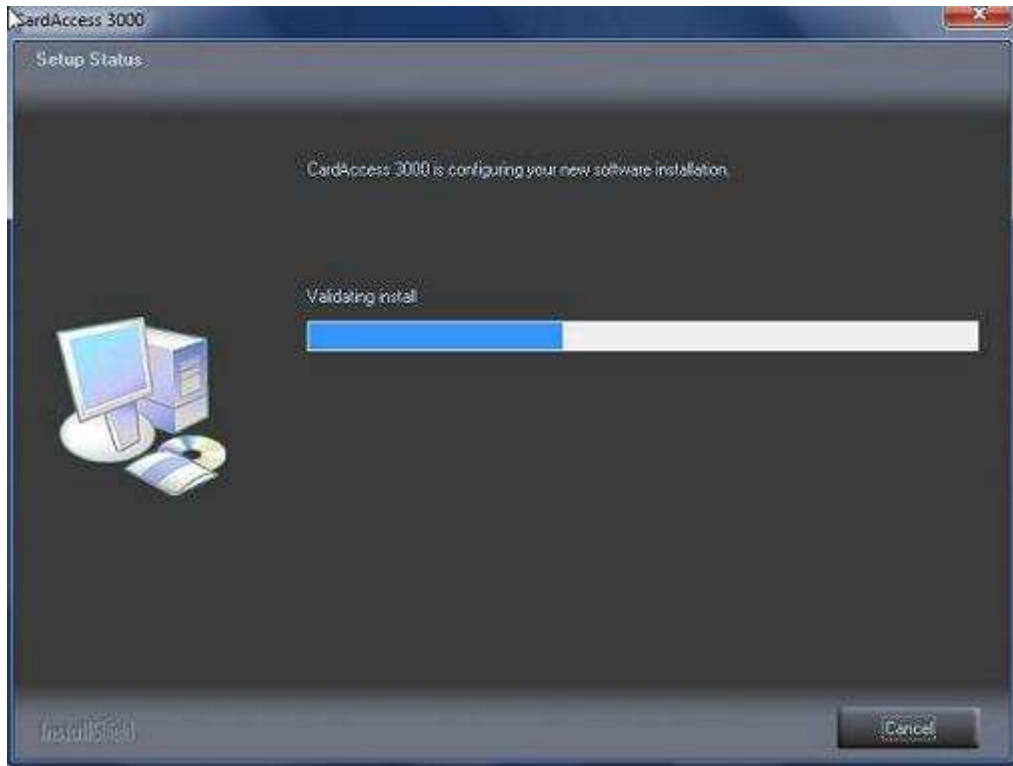


Figure 20.

After the completion of the CardAccess 3000 installation, the hasp driver will install (Refer to Figure 21).

(NOTE: Do not put the security key on until the computer reboots at the end of the installation.)

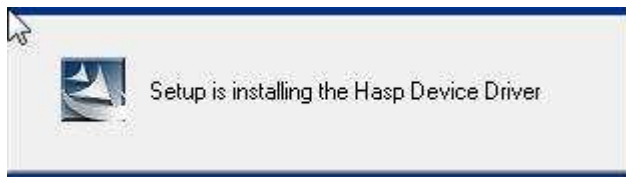


Figure 21.

After the completion of the **Hasp Device Driver**, the SQL Express 2008 installation will automatically begin (Refer to figure 22).

## SQL Express 2008 Installation

During the installation of the **Microsoft SQL Server 2008 Express**, multiple screens will display (Refer to Figures 22, 23, 24, 25, 26 and 27).

**NOTE:** It is very important to verify no error messages display while SQL Server 2008 Express is installing.



Figure 22.

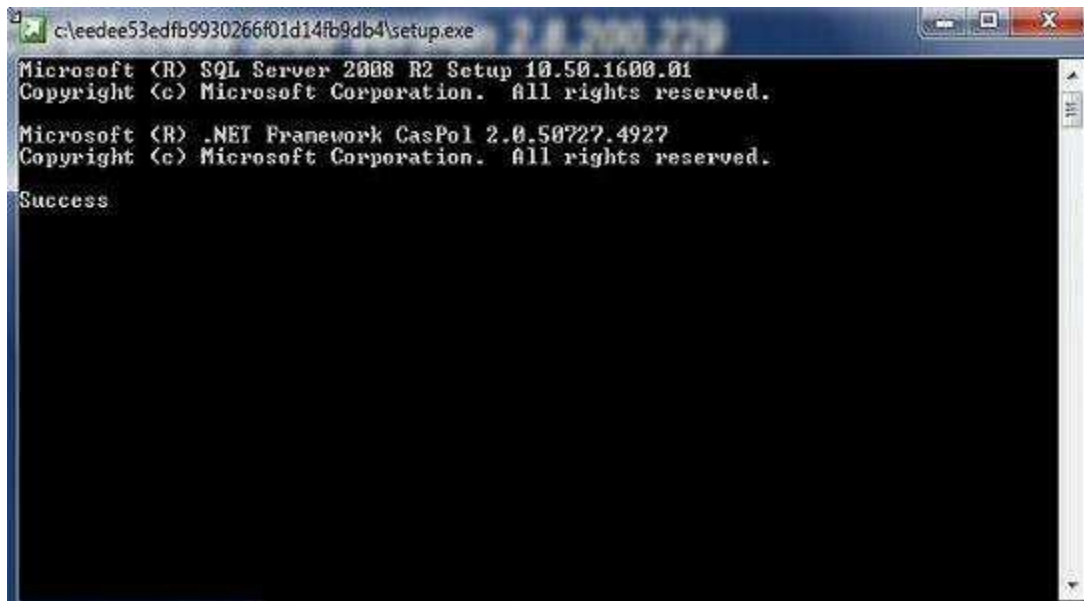


Figure 23.



Figure 24.

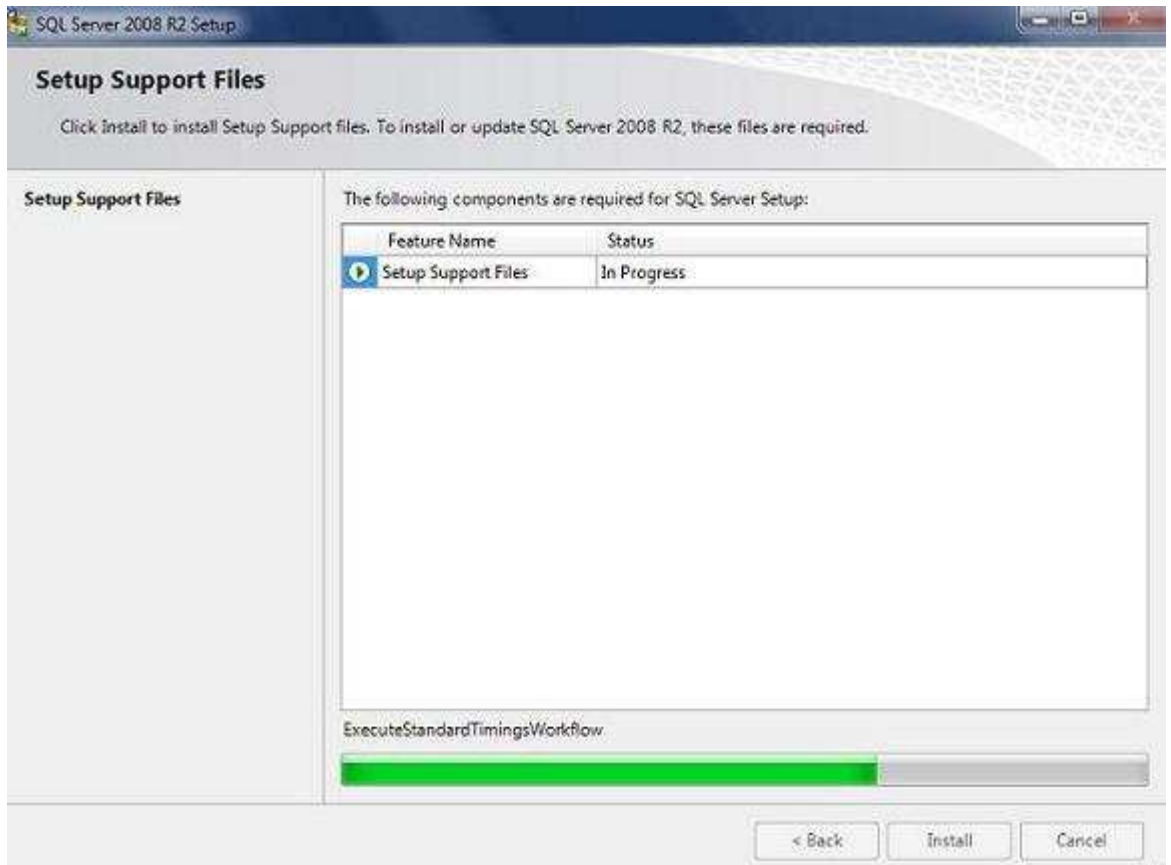


Figure 25.

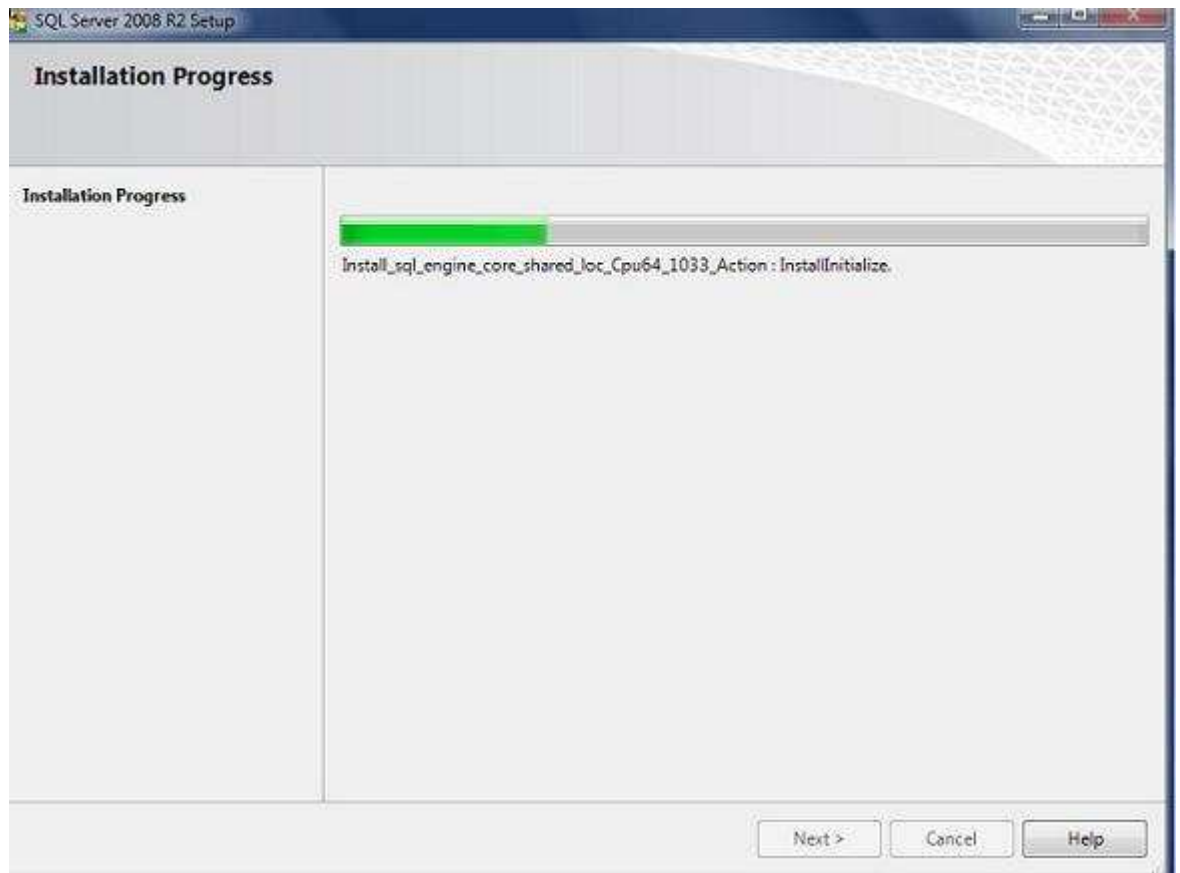


Figure 26.

At the completion of the SQL Express 2005 installation, the **Automatic Database Creation** screens will display (Refer to Figures 27 and 28).

### *Automatic Database Creation*

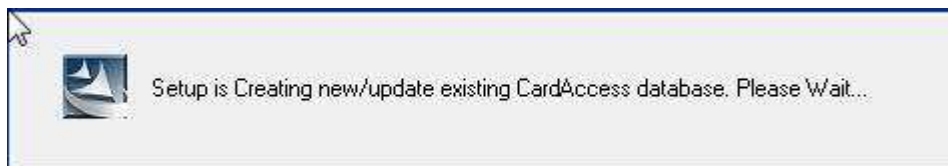


Figure 27.

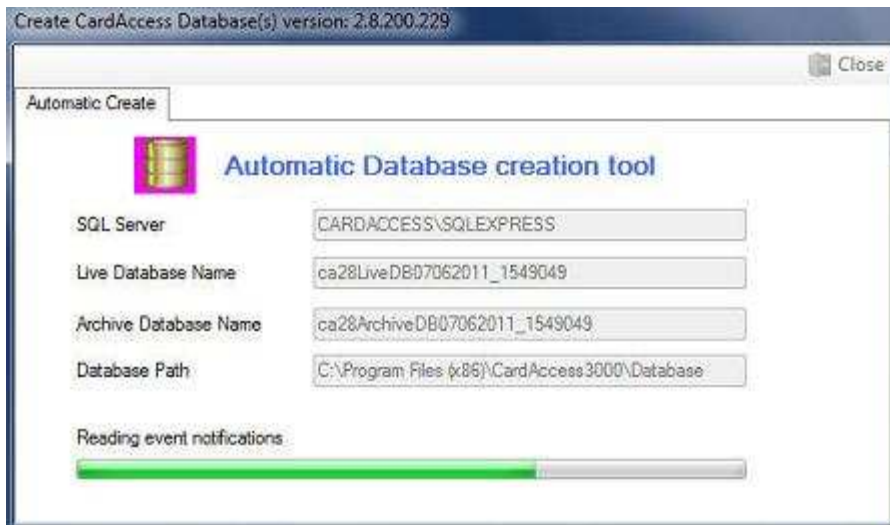


Figure 28.

This process will take a few minutes. A live and archive database will be created automatically. At the completion of the **Automatic Database Creation**, the **Readme Information** screen will display (Refer to figure 29).

**VERY IMPORTANT:** It is very important to read the Readme information for important setup information and known issues.

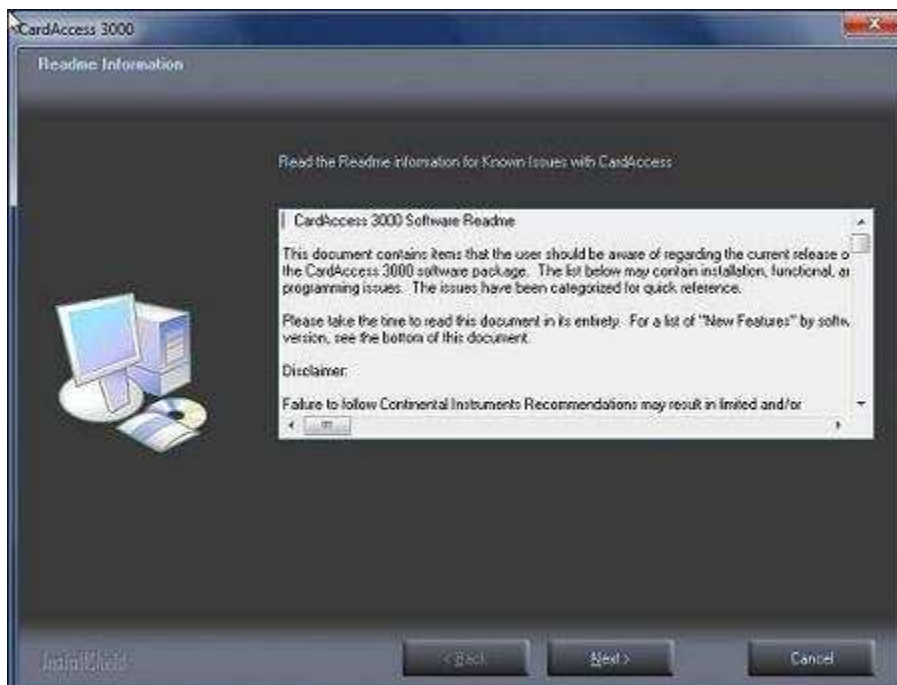


Figure 29.

After reviewing the Readme Information, Click **Next**. The **InstallShield Wizard Complete screen** will display (Refer to Figure 30).

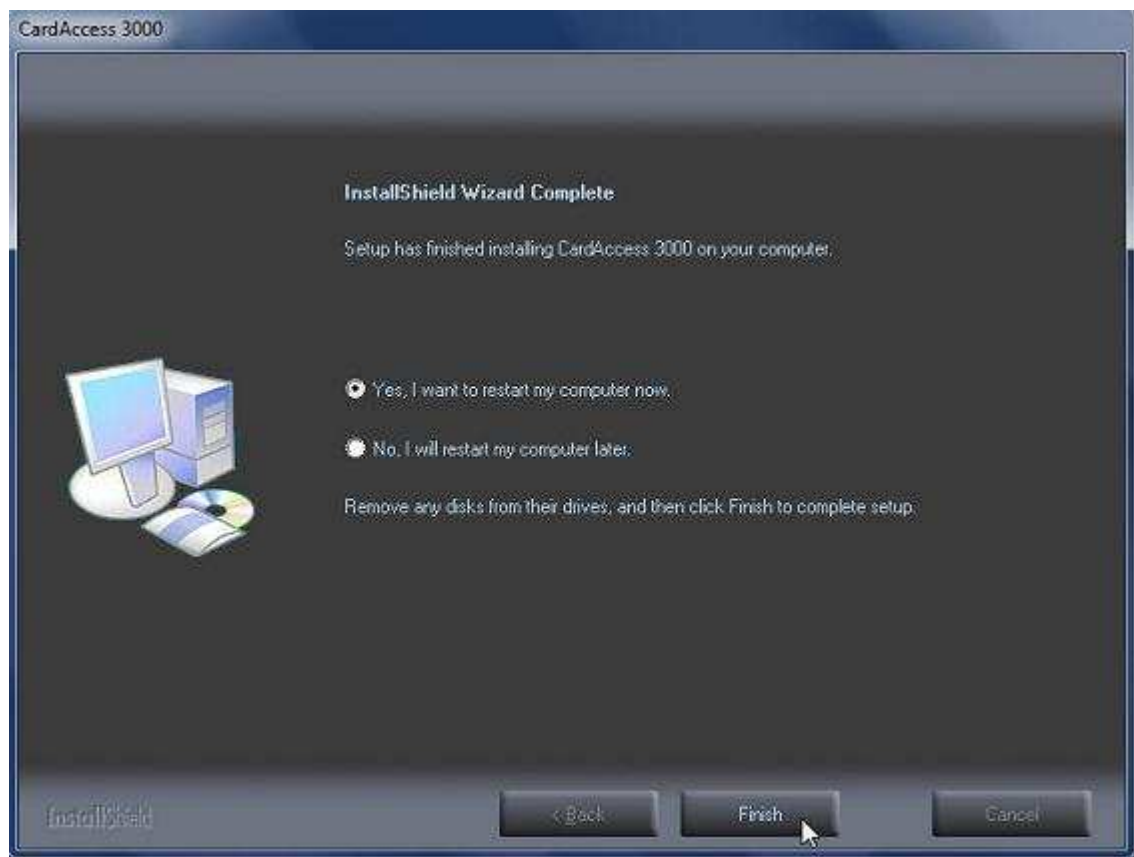


Figure 30.

Verify the **Yes, I want to restart my computer now** option is selected. This should be selected by default. Click **Finish**. The computer will restart.

After the computer reboots, a message will display (**If you are using a hardware dongle, please insert it now**). If you purchased a physical USB security key, insert the security key into the USB port. You should see a **New hardware has been detected** message display.

The next screen to display will be the **CardAccess 3000 license Manager** screen. If you were supplied a license file for software licensing, you will need to copy the license file to the desktop. After the license file is on the desktop, you must **import, activate** and **register** the software license. These selections can be found on the menu items of the CardAccess 3000 license manager.

**The CardAccess installation is now complete.**