

# Continental Access

A Napco Security Group Company



## V2.8.x Upgrade on a Server/Host Procedure

**Very Important: This document is to be used on an upgrade from version 2.6.x. or 2.7.x. If upgrading from V2.5.16 or earlier, refer to the Important Information on page 2.**

REVISION B

DATE: 9/22/2011



# CA3000 Software Installation Procedure

---

Continental Access and CardAccess3000 are registered trademarks of Napco Security Group  
Microsoft® is a registered trademark of Microsoft Corporation.  
Windows® is a registered trademark of Microsoft Corporation.  
CardAccess® is a registered trademark of Napco Security Group

Document Title V 2.8.x Server/Host Upgrade Procedure

This document contains proprietary information of Continental Access. Unauthorized reproduction of any portion of this manual without the written authorization of Continental Access is prohibited. The information in this manual is for informational purposes only. It is subject to change without notice. Companies, names and data used in examples herein are fictitious unless otherwise noted. Continental assumes no responsibility for incorrect information this manual may contain.

Continental Access  
355 Bayview Avenue  
Amityville, NY 11701  
Phone (631) 842-9400  
Fax (631) 842-9135

Web: <http://www.cicaccess.com>

## **License Agreement**

**NOTICE TO USER: THIS PACKAGE IS A CONTRACT. BY OPENING THIS SEALED PACKAGE YOU ACCEPT ALL THE TERMS AND CONDITIONS OF THIS AGREEMENT.**

Use of the Software: You may install and use the software only for the purpose intended.

Copyright. You may not duplicate or copy the software or documentation, except that you may make one backup copy of the software. All copies must bear copyright notices contained in the original copy.

Limited warranty: Continental Access warrants that the software will perform substantially in accordance with the printed documentation when correctly installed on a properly configured computer for which it is intended. Continental Access warrants the discs upon which this product is recorded to be free from defects in materials and workmanship under normal use for a period of 1 year from the date of purchase. During the warranty period Continental Access will replace discs, which prove to be defective.

## Important Information - Must be read before installing software.

- 1) This document covers a CardAccess 3000 V2.8.x server upgrade from V2.6.x or V2.7.x.
  - 2) VERY IMPORTANT- If upgrading from V2.5.16 or earlier, refer to the “Upgrading CardAccess 3000 to V2.6 or V2.7 From V2.5.16” procedure. This document will assist with uninstalling CardAccess3000, Sql2000 and all other components. After all the components are removed, you will install CA3000 as a new version 2.8 Server/Host install.
  - 3) If possible, always refer to the Continental Access website ([www.cicaccess.com](http://www.cicaccess.com) click support/click document library) for the latest documentation. The released CD may not have the latest documentation.
  - 4) Verify you have a physical security key or a software license for Cardaccess3000 V2.8.x. Security keys and software licenses from previous versions of CardAccess3000 are not compatible with this version. VERY IMPORTANT: The security key or software license should be placed on the CardAccess3000 server/host computer, not the workstation.
- NOTE: If you are currently using a software license, you must revoke it before upgrading.
- 5) If Badging3000 (EPI) is currently licensed and installed on the computer being upgrading, **DO NOT REVOKE THE EPI LICENSES OR REMOVE THE BADGING3000 SOFTWARE.**
  - 6) Before upgrading, refer to the CA3000 computer specifications to determine if the computer meets the specs for the CA3000 V2.8.x.
  - 7) It is highly recommended to make a backup of your databases before performing an upgrade.

## CA3000 v2.8.x Server/Host PC Recommendations

CA3000 v2.8.x Server/Host PC Recommendations			
	Server (1-4 Workstations)	Server (5-19 Workstations)	Server (20-49 Workstations)
<b>Processor</b>	Pentium Dual Core, 2.6GHz (min)	Xeon Quad Core 2.0GHz (min)	2 x Xeon Quad Core 2.0GHz (min)
<b>Ram</b>	2.0 GB Min/ 3GB+ for Win7 and Win Server 2008	4.0 GB Min	8 GB Min
<b>Hard Drive</b>	300 GB	500 GB	Raid 5 - 3 drives minimum
<b>USB Ports</b>	4 Min	4 Min	4 Min
<b>Serial Ports</b>	Optional - 1 expandable to 64	Optional - 1 expandable to 128	Optional - 1 expandable to 128
<b>Parallel Ports</b>	Optional - 1	Optional - 1	Optional - 1
<b>Mouse</b>	PS2 or USB	PS2 or USB	PS2 or USB
<b>Monitor</b>	17" SVGA (1024x768)	17" SVGA (1024x768)	17" SVGA (1024x768)
<b>DVDROM</b>	48x/16x	48x/16x	48x/16x
<b>DVDR</b>	24x/8x	24x/8x	24x/8x
<b>Sound</b>	Optional but Stand-Alone recommended	Optional	Optional
<b>Network Card</b>	100/1000 Mb NIC Ethernet	100/1000 Mb NIC Ethernet	100/1000 Mb NIC Ethernet
<b>Operating System</b>	Win XP Pro w/SP3, Win 7 Pro 32/64 bit, Win 2003 Server 32/64 bit, or Win 2008 Server 32/64 bit.	Win XP Pro w/SP3, Win 7 Pro 32/64 bit, Win 2003 Server 32/64 bit, or Win 2008 Server 32/64 bit.	Win XP Pro w/SP3, Win 7 Pro 32/64 bit, Win 2003 Server 32/64 bit, or Win 2008 Server 32/64 bit.
<b>Database</b>	MSSQL 2005/2008 R2 Express or MSSQL Server 2005/2008 R2 for higher performance	MSSQL Server 2005/2008 R2 recommended	MSSQL Server 2005/2008 R2 recommended
<b>Backup</b>	Tape / CD / DVD / Network	Tape / CD / DVD / Network	Tape / CD / DVD / Network
<b>System Size</b>	This is the recommended PC server specification for a system with up to four workstations. It can be used for a stand-alone system, a workstation or a CA3000 Server. For high transaction environments some specifications may change.	This is the recommended PC specification for a CA3000 Server supporting up to nineteen workstations. For high transaction environments some specifications may change.	This is the recommended PC specification for a CA3000 Server supporting up to forty nine workstations. For high transaction environments some specifications may change. For larger systems please consult with Continental Access.
<b>Notes:</b>	(1) If using SQLExpress, the database size should not exceed 4GB. (2) Disk drive usage is dependent on the number of transactions kept in backup. (3) Additional RAM will improve performance (4) It is best to perform badging and other integration functions on a workstation, not the server.		

**\*\*\* Other than a small Stand-Alone system, Continental Access does not recommend running Photo-badging, DVR/NVR Integration, Napco Integration, Scripting, or Dynamic Maps from a Host machine. Please refer to our Workstation Recommendation below for these specifications. \*\*\***

## Scope

This document contains information regarding the upgrade to a CA3000 V2.8.x from V2.6.x or V2.7.x only. It is to be used for a CA3000 host upgrade. If Badging3000 (EPI) is currently installed and licensed on the computer being upgrading, do not revoke the EPI licenses and do not remove the badging3000 software. It is highly recommended to run Badging3000 (EPI) on a workstation. Badging 3000 is not supported on a 64 bit computer. .

**VERY IMPORTANT:** The screenshots in this document is for a CardAccess 3000 upgrade on a **Windows 7 – 64 bit computer**. The following screenshots will vary if the installation is being performed on a 32 bit computer or other supported operating systems.

## InstallShield Wizard

If auto start is enabled on your system, the **Auto Play** screen will display after inserting the CA3000 DVD in the DVD drive (Refer to Figure 1). Click **“Run Launch.exe”**. Verify the **CardAccess 3000 Version 2.8 Setup** screen displays (refer to figure 3). Skip ahead to the steps following Figure 3.

**Warning:** If auto start is not enabled on your system, nothing will occur after inserting the CA3000 DVD. Follow the steps below to execute the program.

Click the **Start** menu on your PC. In the **Search Programs and Files** box, type **d:\launch.exe** (Refer to Figure 2). After pressing ENTER, the **CardAccess3000 Version 2.8 setup** screen will display (Refer to Figure 3).

**Note:** “d:” represents the CD-ROM drive letter. This letter will be different depending on the drive letter of your CD-ROM.



Figure 1.



Figure 2.



Figure 3.

**VERY IMPORTANT- MUST READ:** The installation checks for required components on the target machine. Depending on the initial state of the system, several reboots may be requested during the installation process. If this occurs, reboot the machine and restart the CardAccess 3000 installer when the system comes up again. Continue this process until the installer completes.

Click on the **Install CardAccess 3000** button. The CardAccess 3000 Prerequisites will be installed if they are not currently on the computer.

## Pre-requisites

**NOTE:** Only the prerequisites which need to be installed will be listed in the requirements box (Refer to figure 4). During the installation of the prerequisites, the computer might require a reboot. If you are prompted to reboot, click **Yes** or **OK** (Refer to figure 6). After the computer reboots, the CardAccess 3000 setup program must be restarted again (Refer to figures 1, 2, and 3).

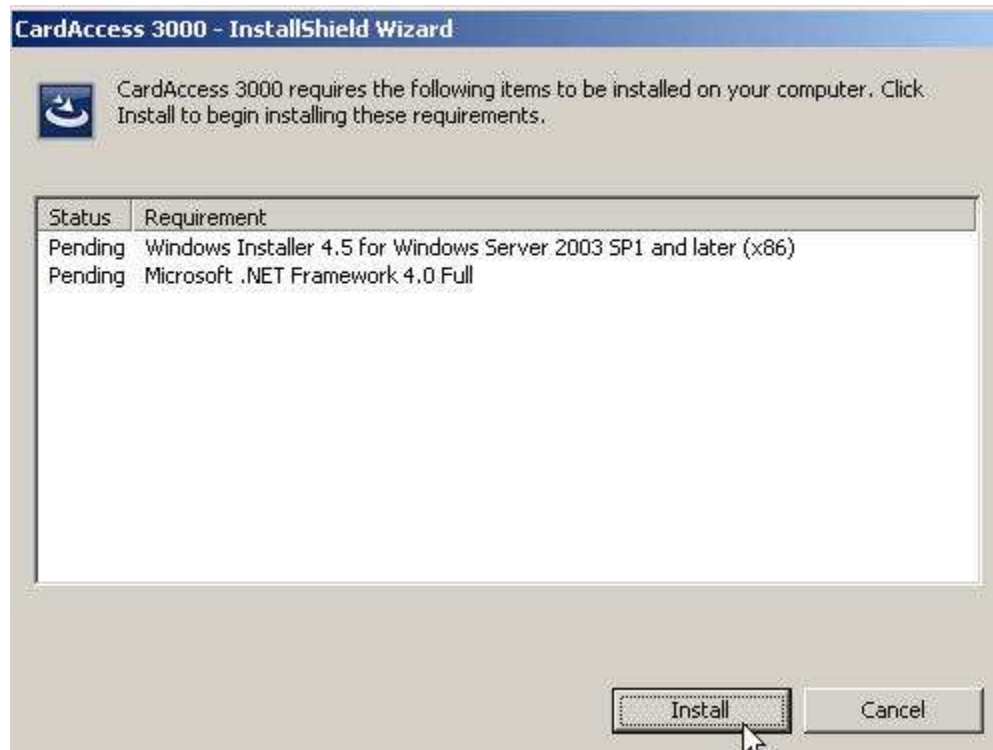


Figure 4.

Click **Install**. After clicking **Install**, a progress bar will display while the **Windows Installer 4.5** is installing (Refer to figure 5).

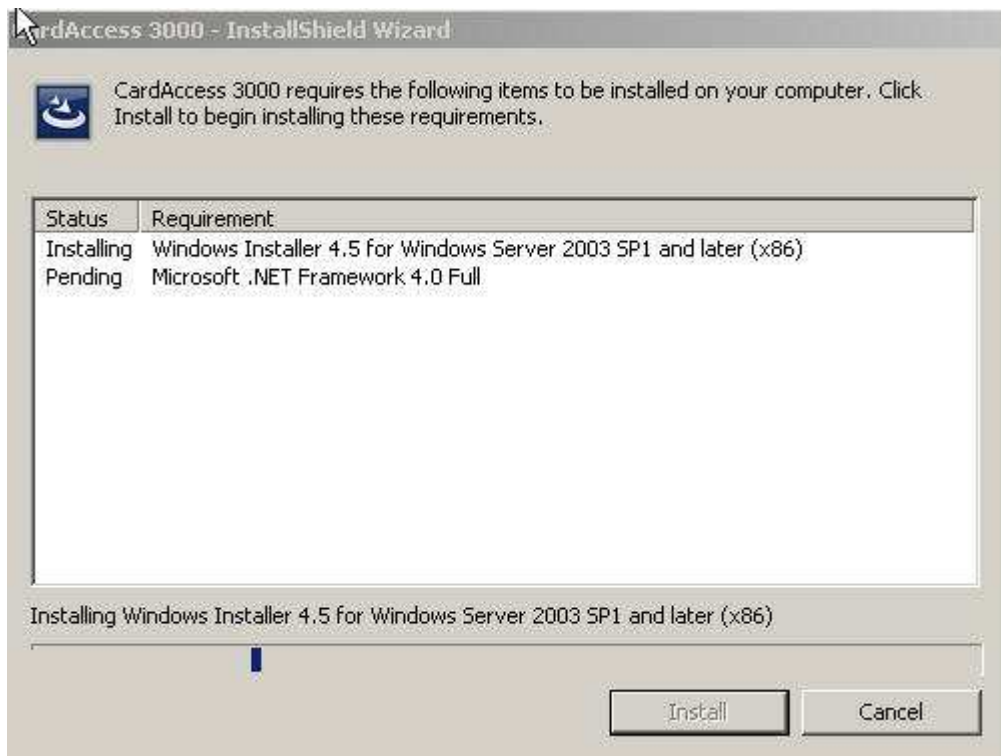


Figure 5.



Figure 6.

NOTE: After the Windows Installer 4.5 is installed, the .Net Framework 4.0 will install.

**Note:** The Microsoft .Net Framework 4.0 takes a few minutes to install. **Please be patient.**

## *ADH Source Filter for DirectShow (Pre-requisite)*

After the completion of .NET Framework 4.0, the ADH Source Filter for DirectShow installation will begin (Refer to figure 7).

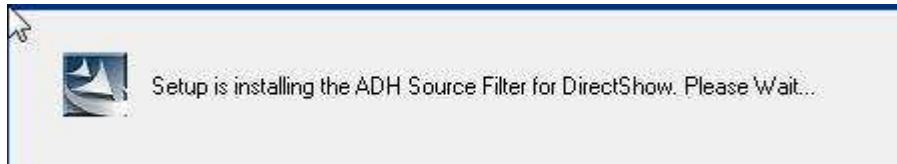


Figure 7.

Note: As part of the ADH Source Filter for DirectShow installation, the VC++ Run Time libraries will be installed if needed (Refer to figure 8).



Figure 8.

Click **Install**. After clicking **Install**, the **Visual C++ libraries** will be installed (Refer to figure 9).

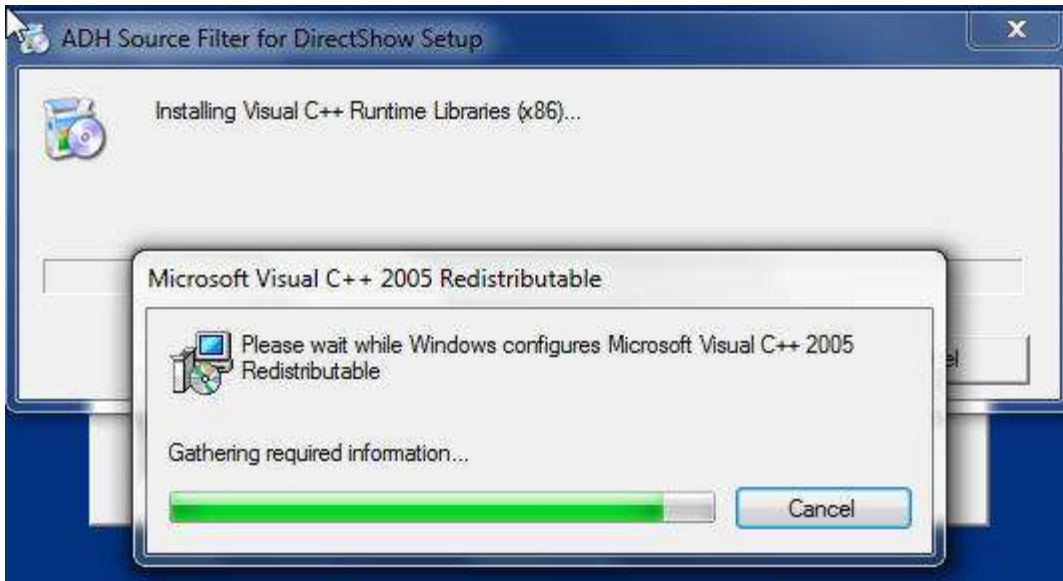


Figure 9.

After the completion of the Visual C++ libraries, the ADH **Source Filter for DirectShow Setup Wizard** will install (Refer to figure 10).



Figure 10.

Click **Next**. The ADH Source Filter for DirectShow Installation Folder screen will display (Refer to figure 11).



Figure 11.

Click **Next**. The **Confirm Installation** screen will display (Refer to figure 12).

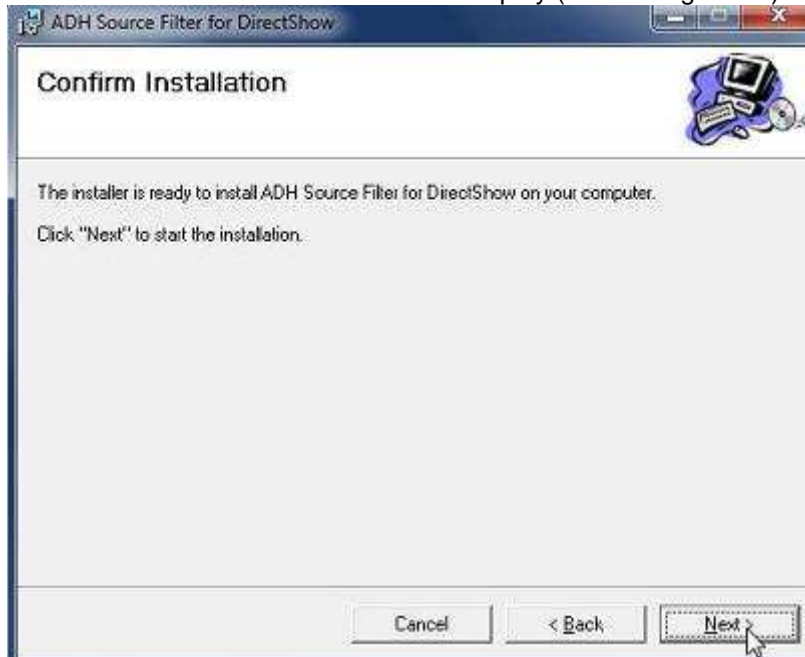


Figure 12.

Click **Next**. A progress bar will display while the ADH Source Filter for DirectShow installs (Refer to figure 13).

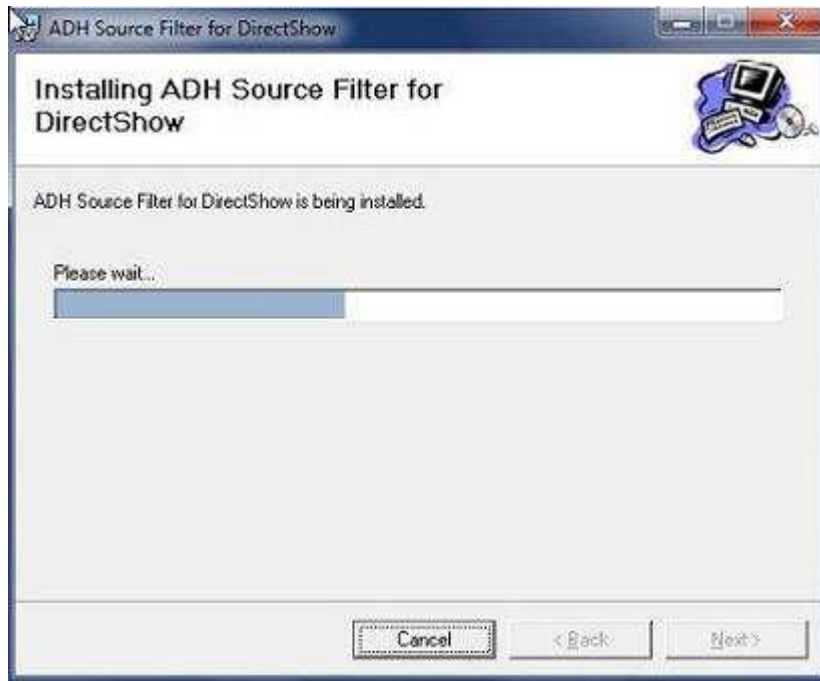


Figure 13.

At the completion of the **ADH Source Filter for DirectShow installation**, the Installation Complete screen displays (Refer to figure 14).

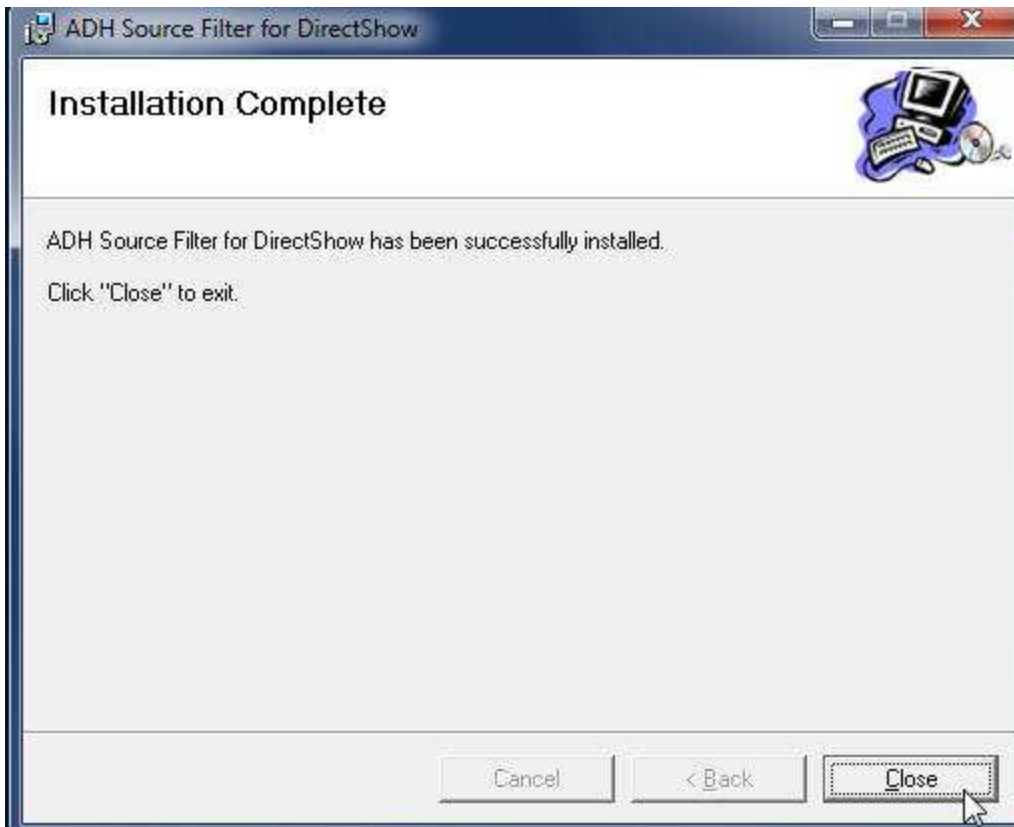


Figure 14.

Click **Close**. The CardAccess 3000 Setup Type screen displays (Refer to figure 15).

**REMINDER:** If any dialog boxes display as per figure 4, you must reboot the machine and restart the CardAccess 3000 installer.

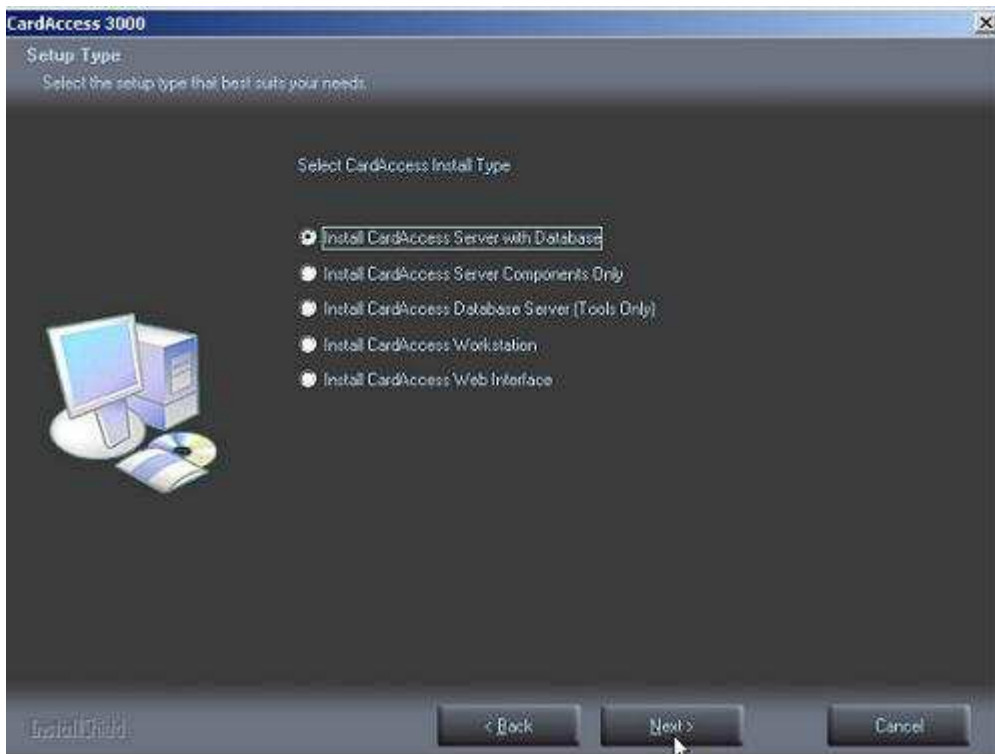


Figure 15.  
Select **Install CardAccess Server with Database**. Click **Next** (Refer to figure 16).

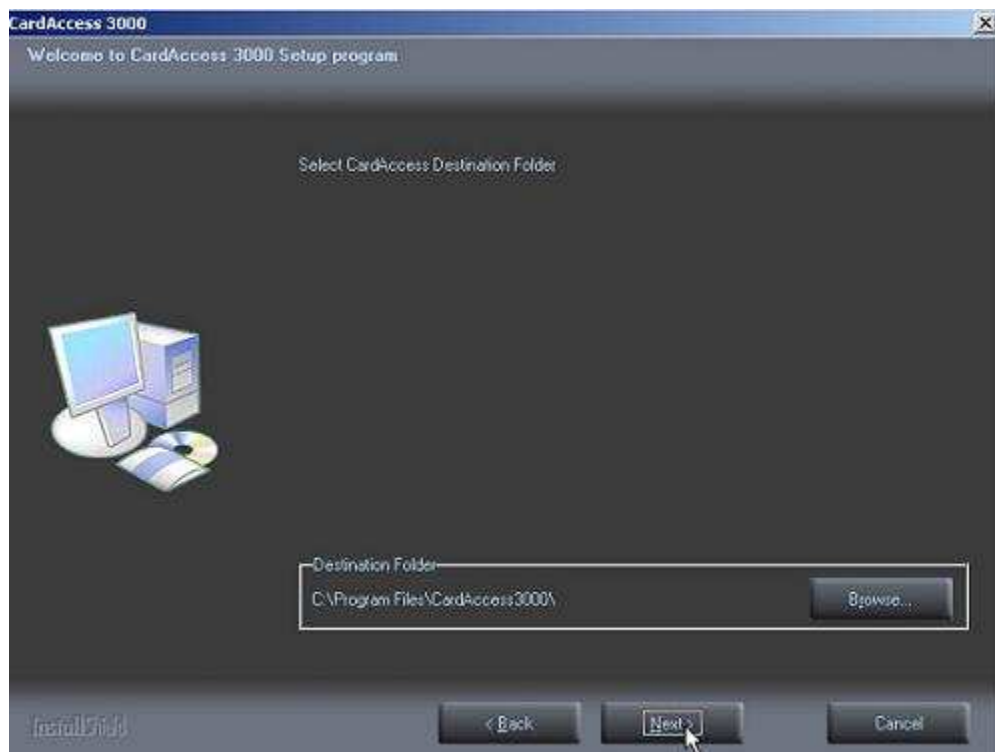


Figure 16.  
The default destination path will display. Click **Next** (Refer to figure 17).

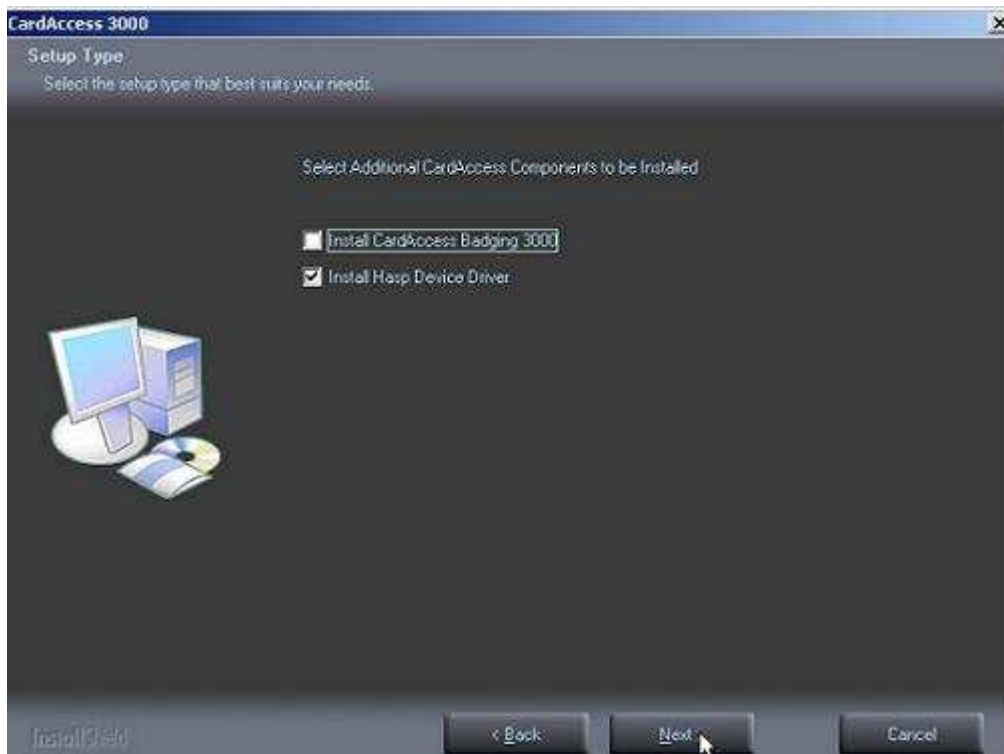


Figure 17.  
The Select Additional CardAccess Components screen will display. Click **Next** (Refer to figure 18).

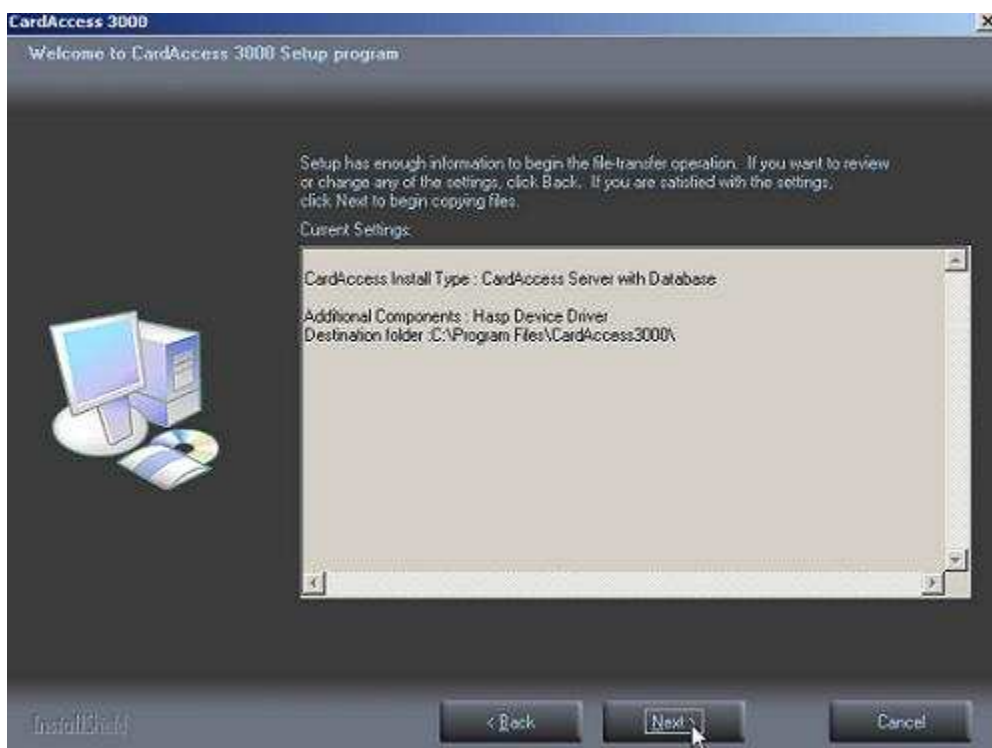


Figure 18.

Click **Next**. A command window will display momentarily while the services are stopped. After the services are stopped successfully, a progress bar will display while the CardAccess 3000 is installing (Refer to figure 19 and 20).

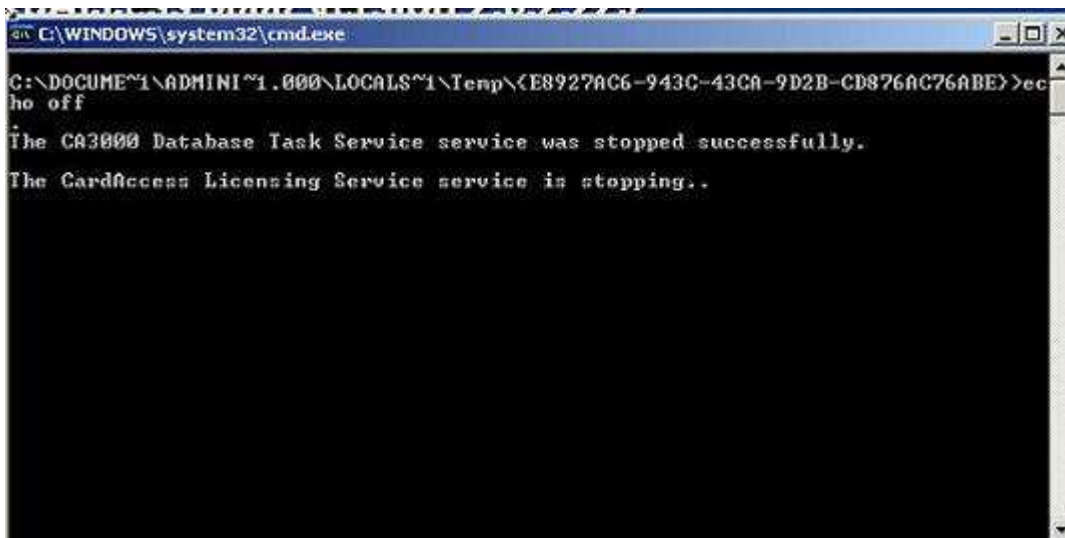


Figure 19.

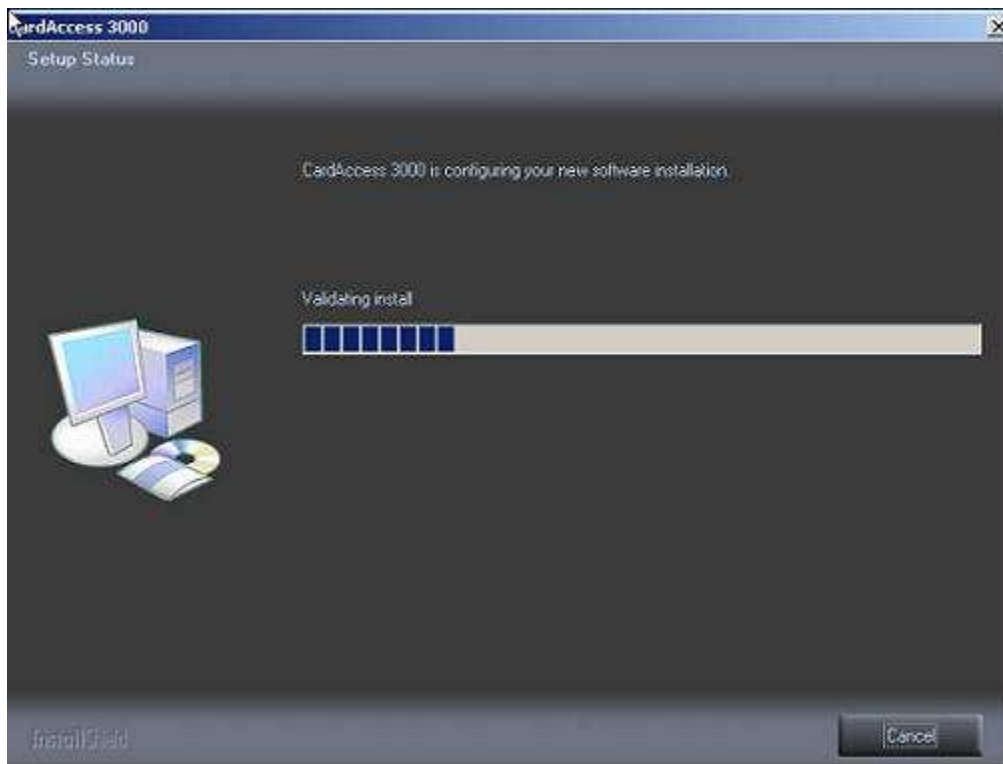


Figure 20.

After the completion of the CardAccess 3000 setup configuration, the **Setup is installing the Hasp Device Driver** screen will display (Refer to figure 21).

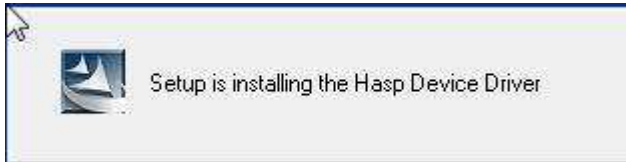


Figure 21.

After the completion of the Hasp Device Driver Installation, the CardAccess 3000 database(s) **Automatic Update** screen will display (Refer to figure 22 and 23).

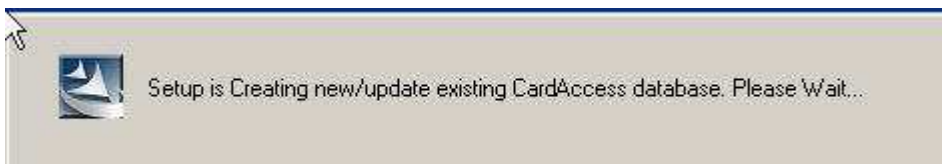


Figure 22.

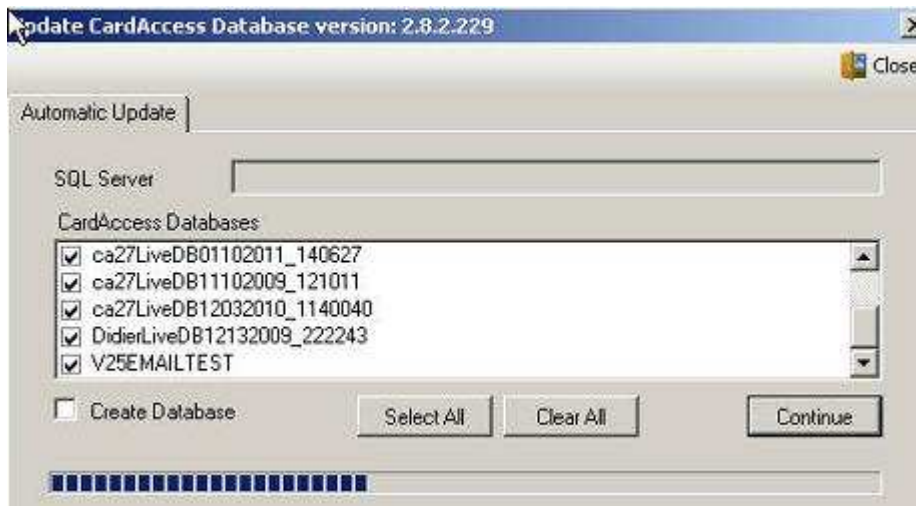


Figure 23.

Select the database(s) you wish to update.

Click **Continue**. A **Database Update Warning** screen will display and a CardAccess 3000 database password box will display (Refer to figure 24). Note: It is recommended to leave the password setting at the recommended setting.



Figure 24.

Click **Yes**. The database(s) selected will be updated. A progress bar will display while updating database(s).

At the completion of the **Automatic Database Update** the **Readme Information** screen will display. **VERY IMPORTANT:** It is very important to read the Readme information for important setup information and know issues (Refer to Figure 25).

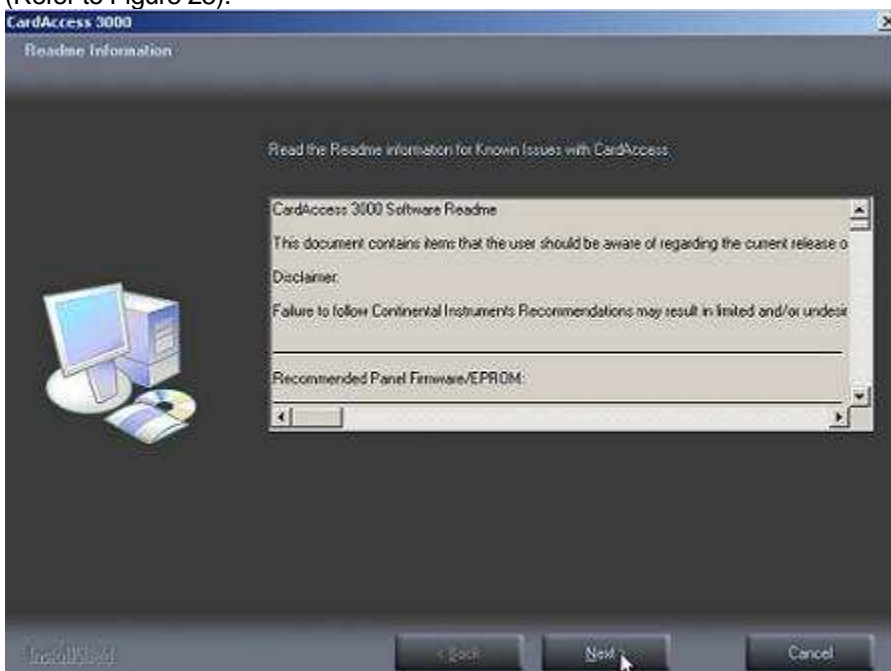


Figure 25.

After reviewing the Readme Information, Click **Next**. The **InstallShield Wizard Complete** screen will display (Refer to Figure 26).

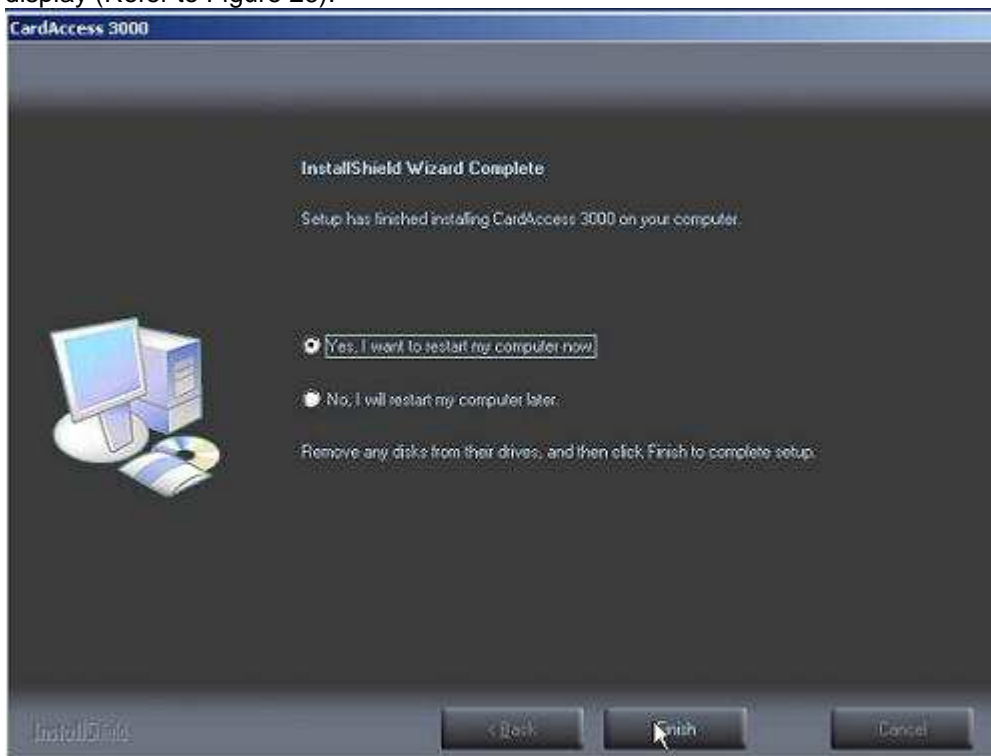


Figure 26.

Verify the **Yes, I want to restart my computer now** option is selected. This should be selected by default. Click **Finish**. The computer will restart.

After the computer reboots, the CardAccess 3000 license manager screen will display. If you purchased a physical USB security key, close this screen. If you were supplied a license number for software licensing, you will need to activate and register the software license now.

If you have a physical security key, you will need to install it before launching the CardAccess 3000 (after inserting the security key into the USB port, you should see a “New hardware has been detected” message display).

**The CardAccess upgrade is now complete.**