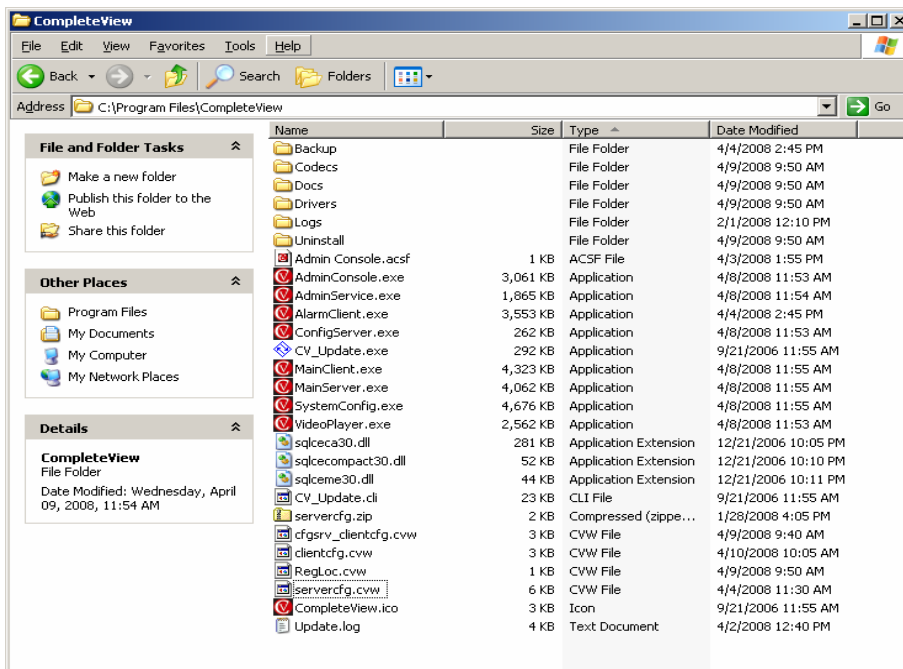


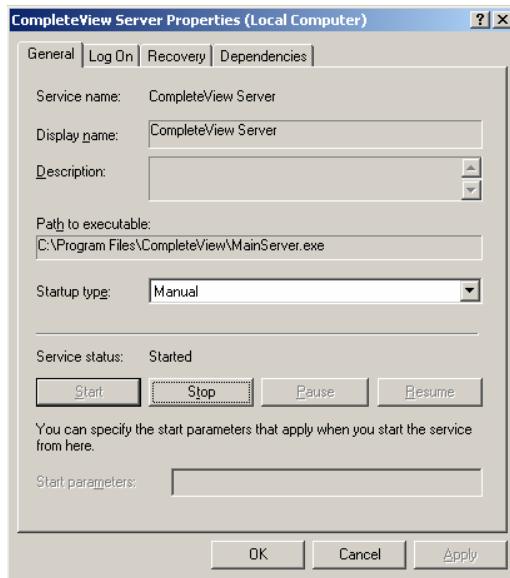
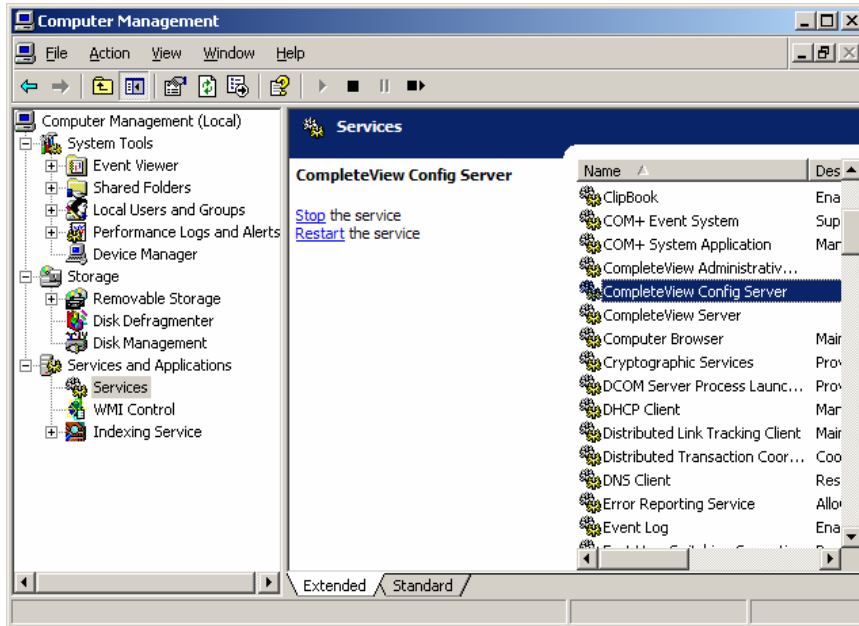


Upgrading CompleteView Server from Version 1.X or 2.X to version 3.x

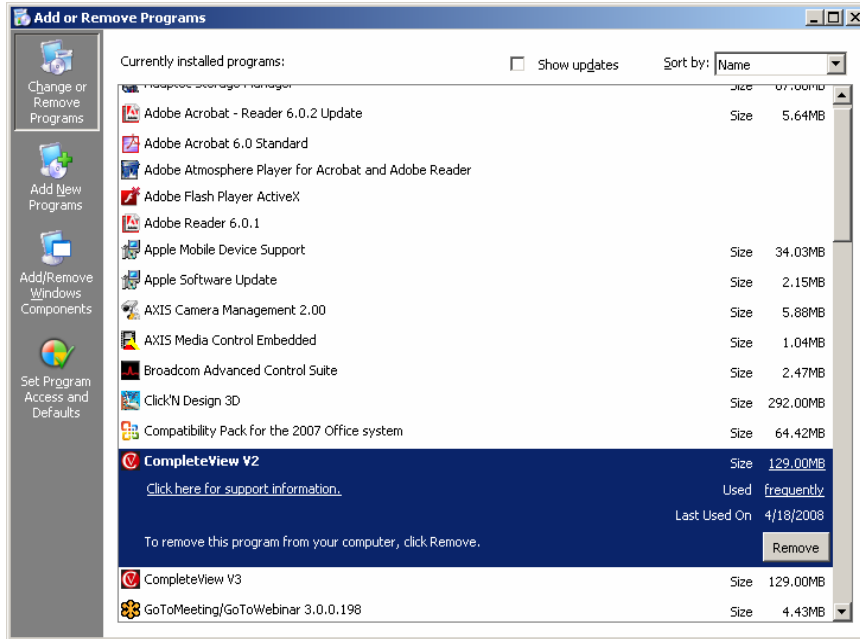
1. Backup configuration files (c:/program files/CompleteView file names are clientcfg.cvw, cfgsvr_clientcfg.cvw and servercfg.cvw).



2. Stop the CompleteView service, CompleteView Administrative Service, and the CompleteView Config Server. To do this right click on my computer left click on manage go into services, double click on the each service and click stop.

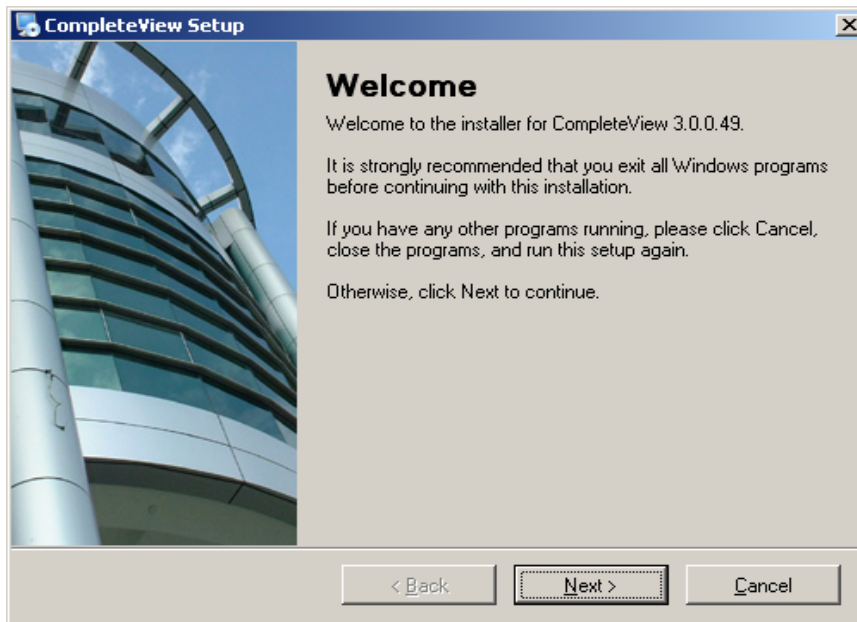
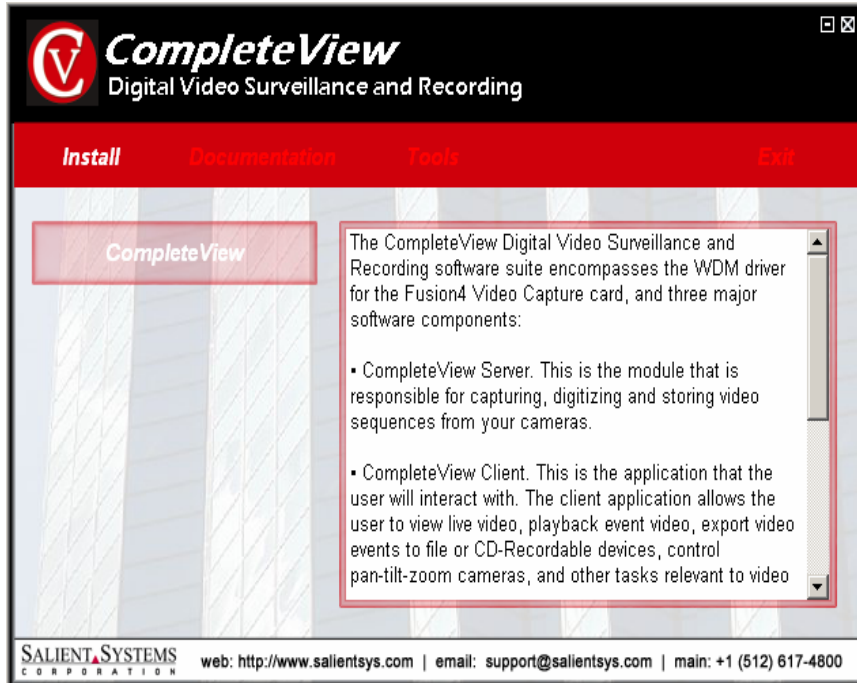


3. Add/Remove CompleteView 1.x or CompleteView V2 – Start/programs/control panel/ add/remove programs.

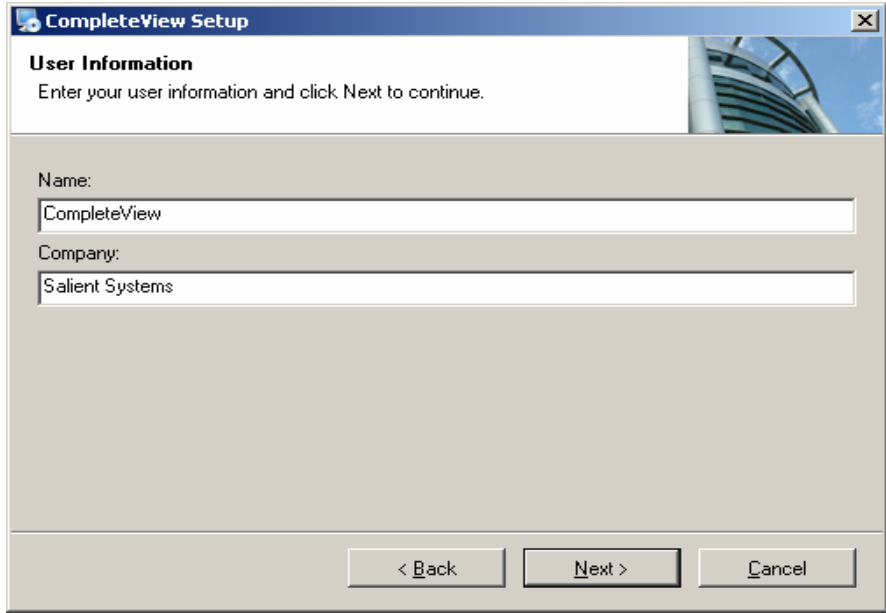


4. Attach the USB Key if you are upgrading from CompleteView version 1.x software.

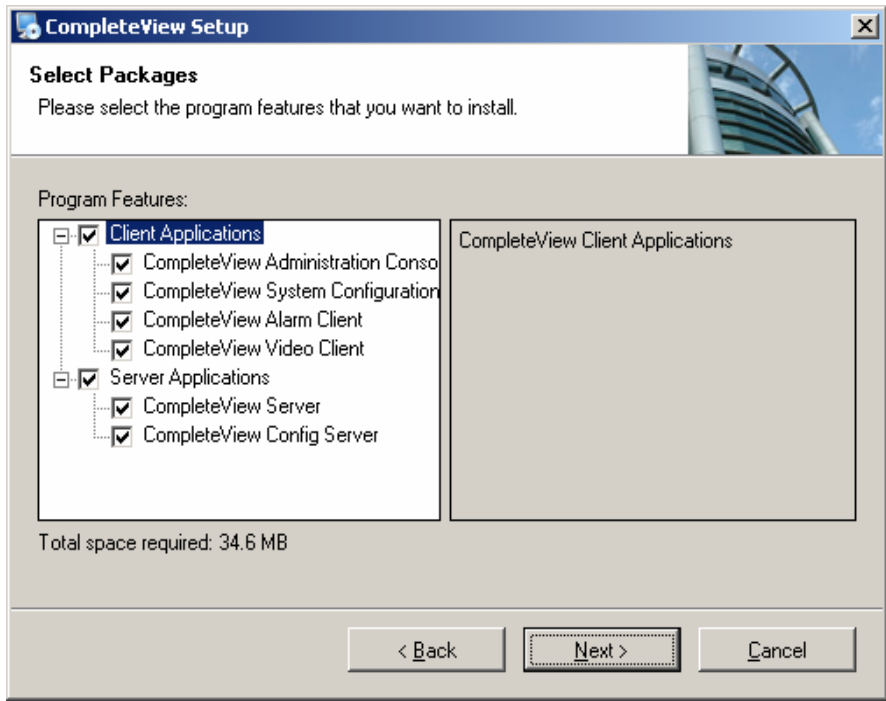
5. Put in the CD and run setup 3.0.0.49, click on CompleteView to start the setup utility.



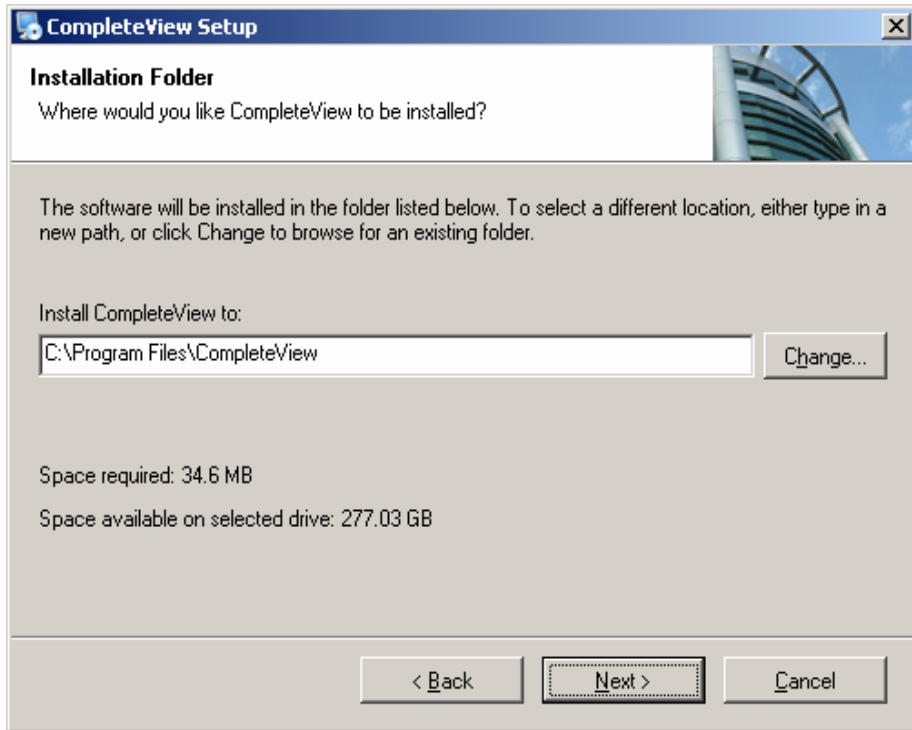
- Click Next



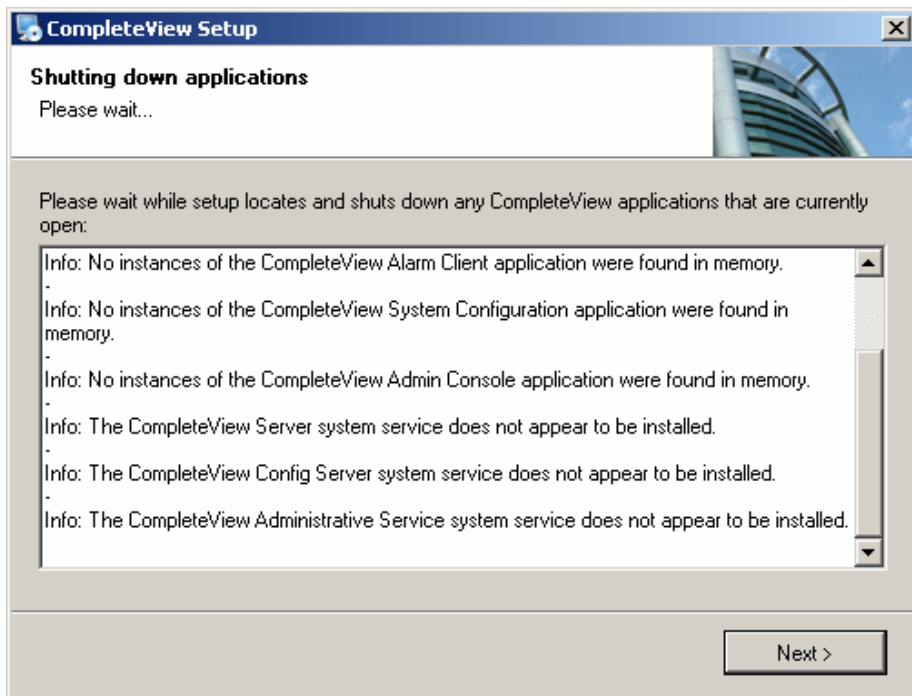
- Click Next



- Check all client applications and server applications.



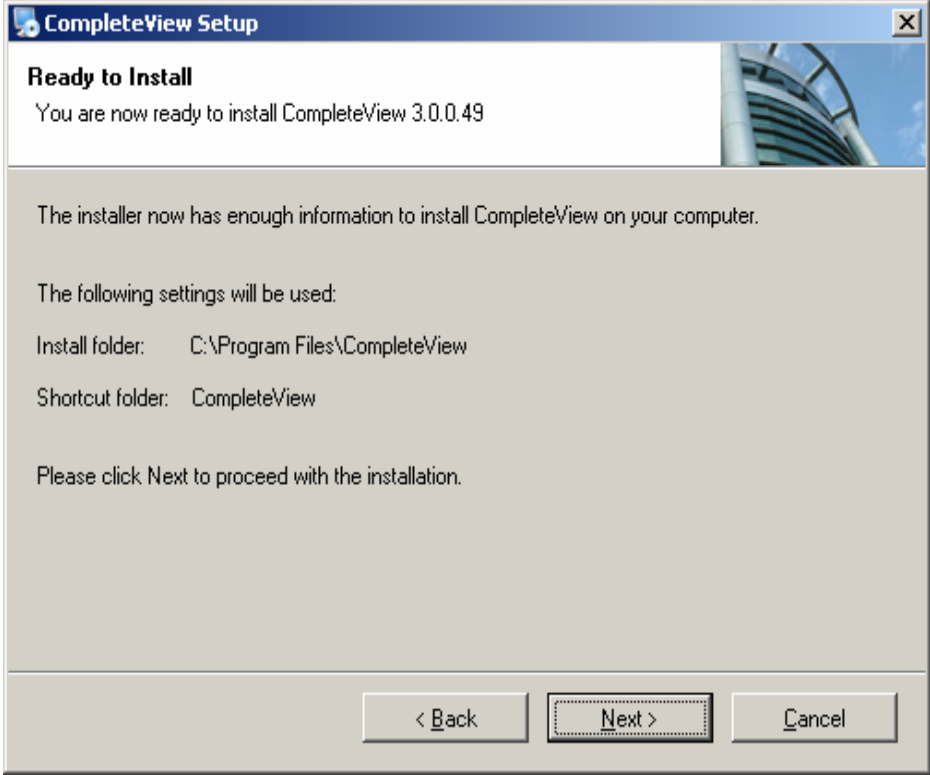
- Click Next



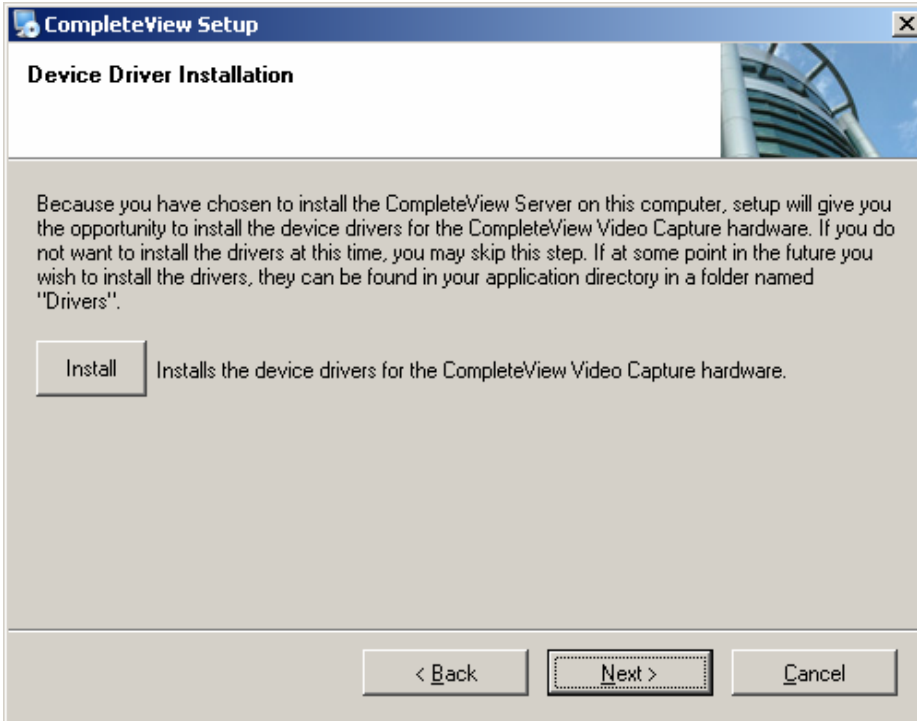
- Click Next



- Click Next

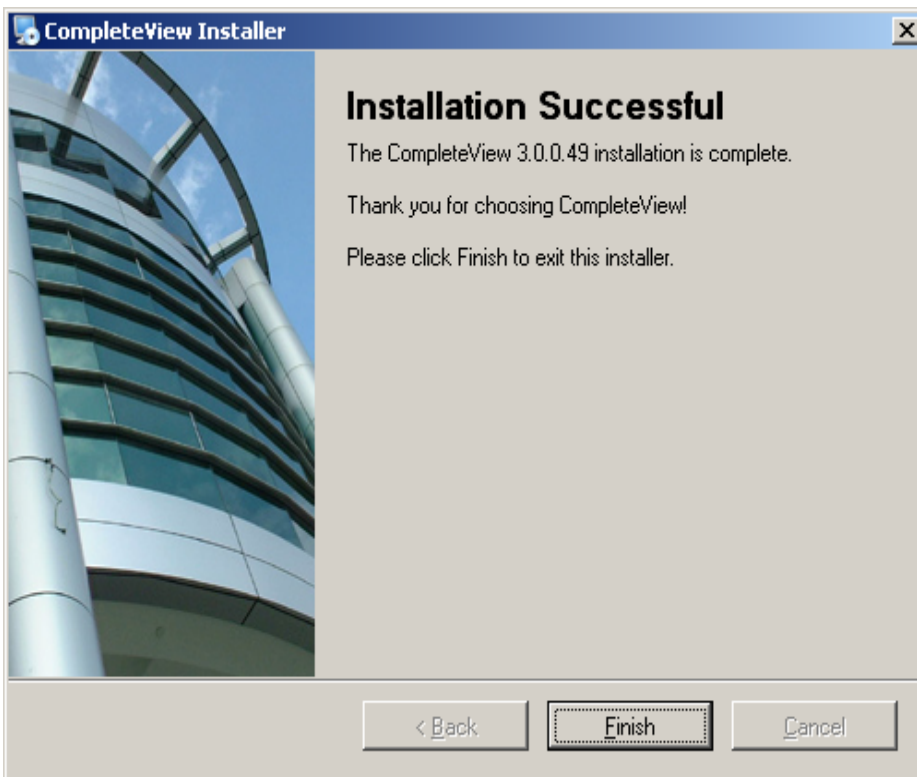


- Click Next



- Click Next

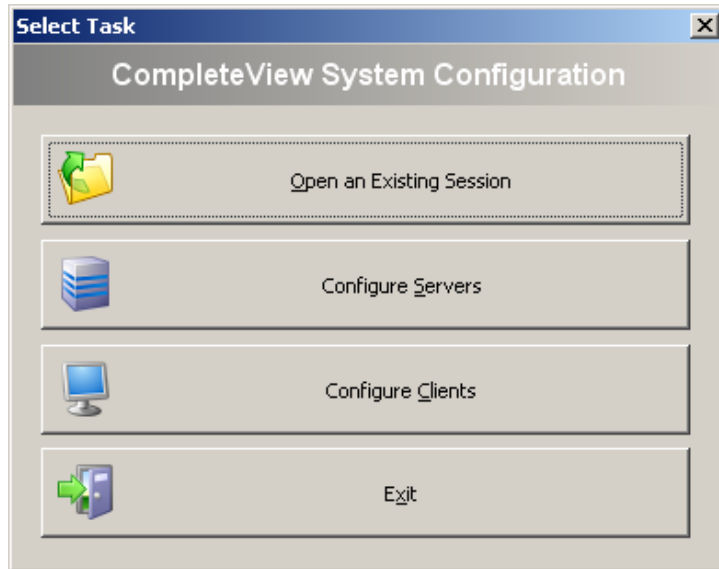
6. If setup prompts to install drivers select no.



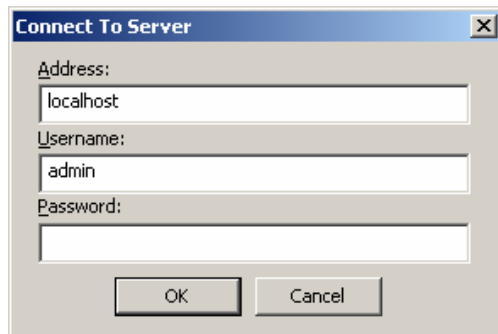
- Click Finish

7. Reboot the system.

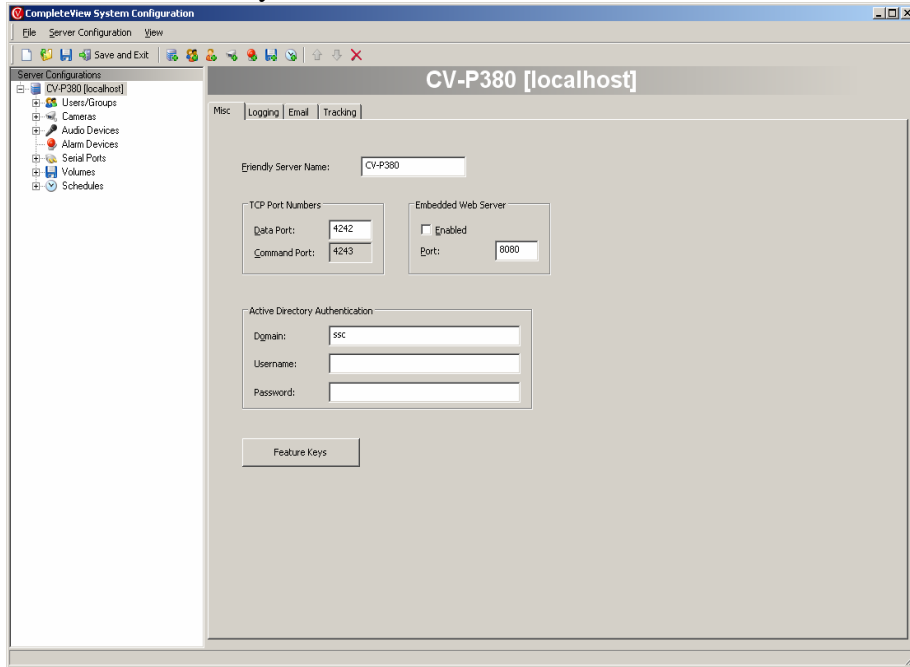
8. Login to windows. If your system was a version 2.x system and you already have a USB key attached following the remaining instructions. If you were upgrading from version 1.x you can bypass the following steps and go directly to Step 12.
9. Click on start/programs/completeview/system configuration.



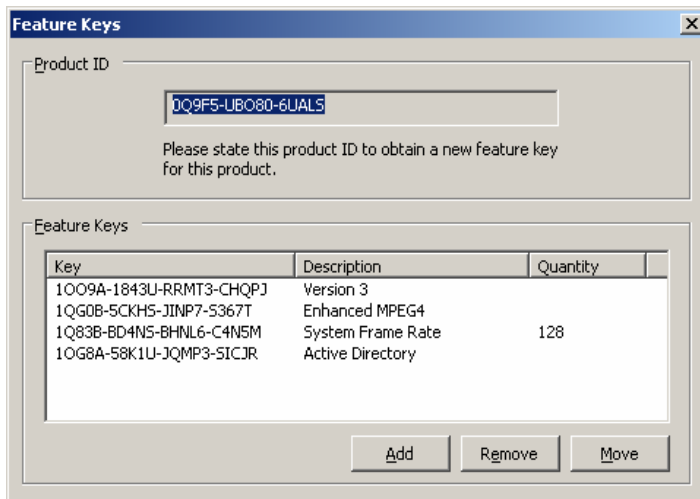
10. Enter localhost as the server address and login as administrator.

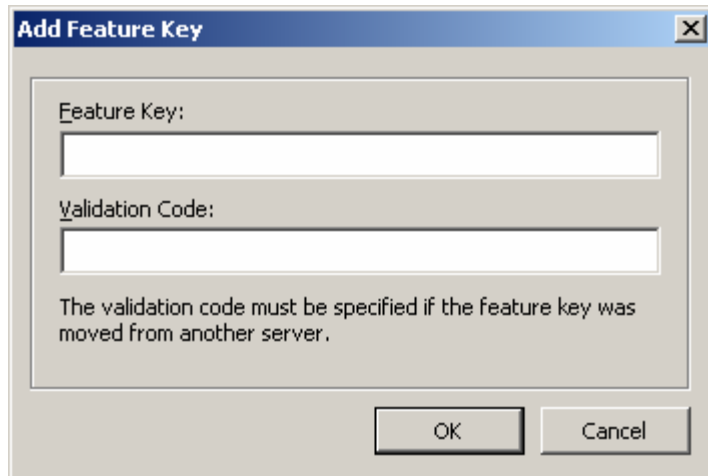


11. Click on feature Keys



10. Click on Add and then enter the feature key(s) given to you with your software upgrade.





The image shows a Windows-style dialog box titled "Add Feature Key". It has a blue title bar with a close button (X) in the top right corner. The main area is light gray and contains two text input fields. The first field is labeled "Feature Key:" and the second is labeled "Validation Code:". Below the second field, there is a note: "The validation code must be specified if the feature key was moved from another server." At the bottom of the dialog, there are two buttons: "OK" and "Cancel".

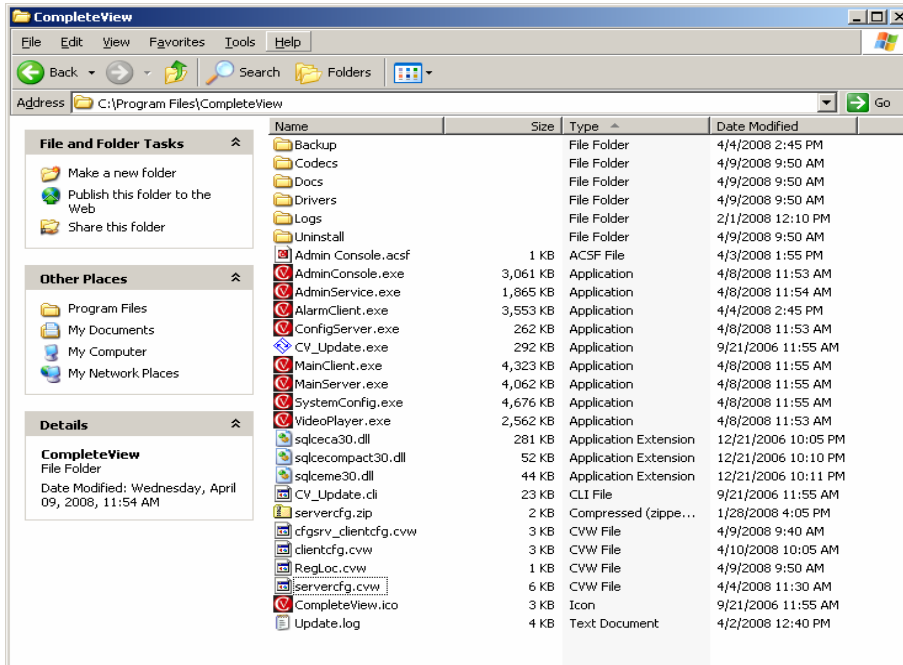
11. Once you have entered your feature keys(s) then click on Save and Exit.
12. Launch the client software and it should come online.
13. Contact 512-617-4802 for support.



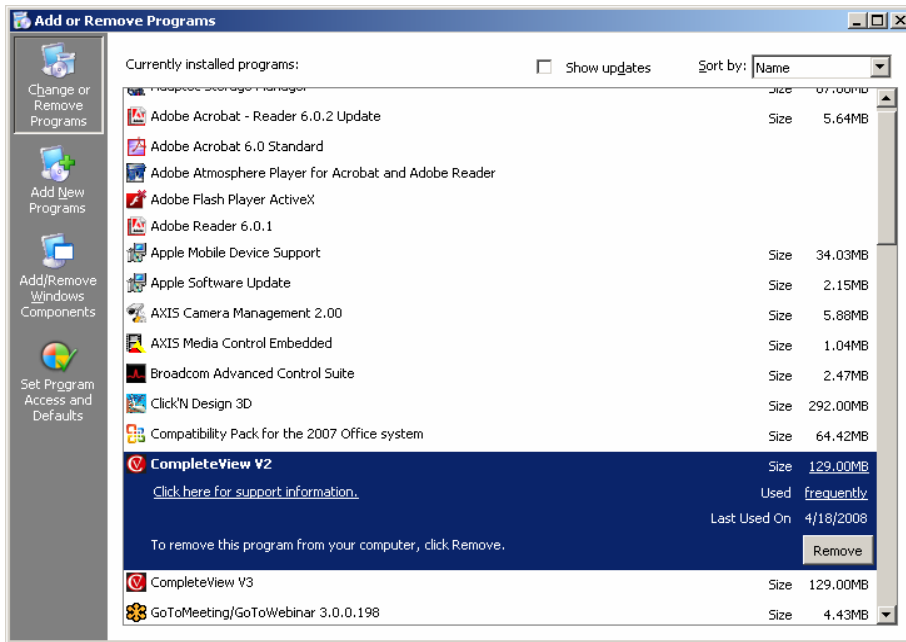
SALIENT SYSTEMS

Upgrading CompleteView Client from Version 1.X or 2.X to 3.X

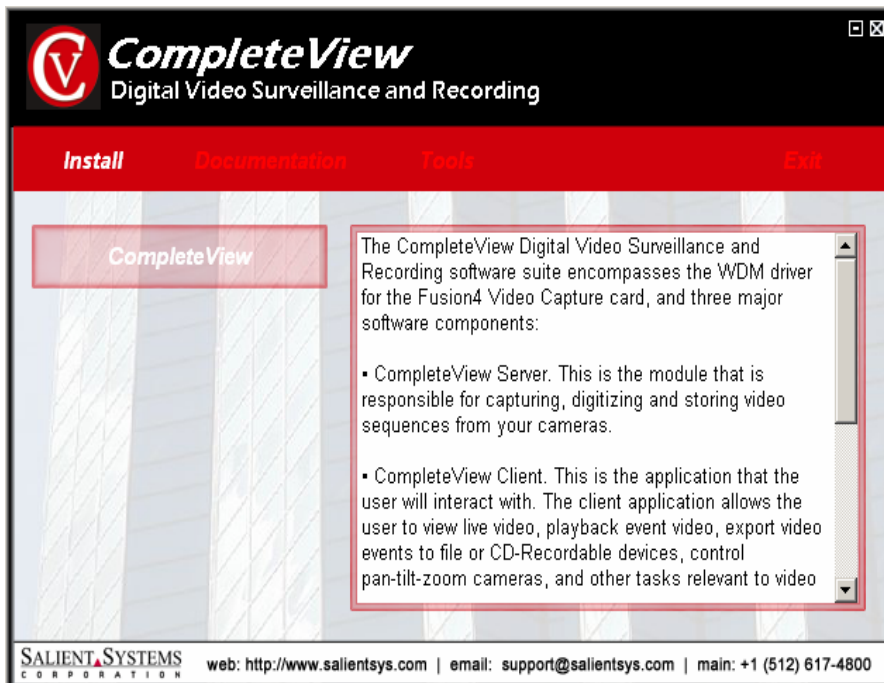
1. Backup configuration files c:/program files/CompleteView (clientcfg.cvw).



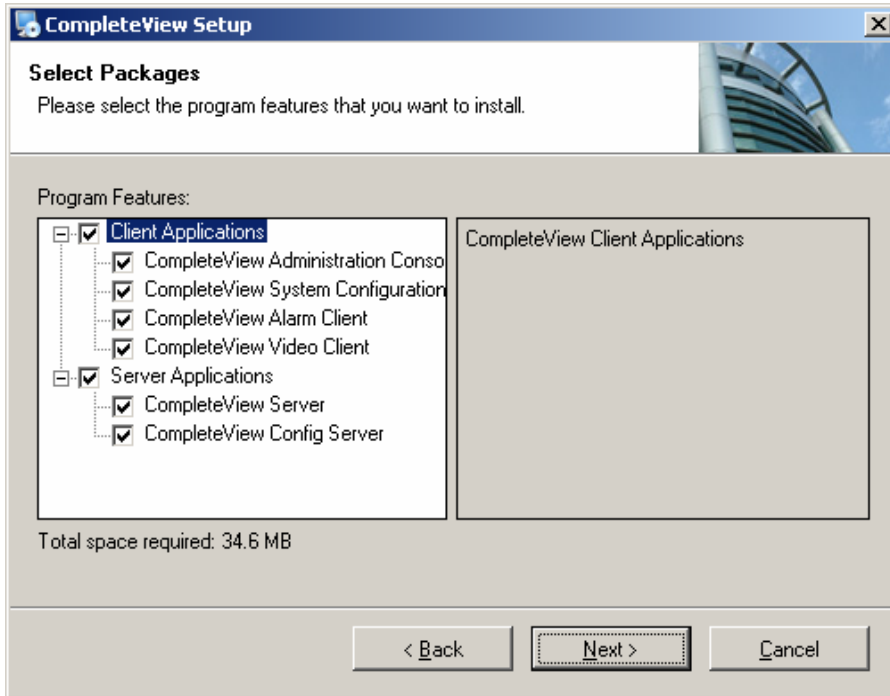
12. Add/Remove CompleteView 1.x or CompleteView V2 – Start/programs/control panel/ add/remove programs.



13. Put in the CD and run setup 3.0.0.49, click on CompleteView to start the setup utility.



14. Choose to install the client applications that you want:



Client – client software

System configuration – allows you configure both CV Client and Server.

Admin console – remote administration tool

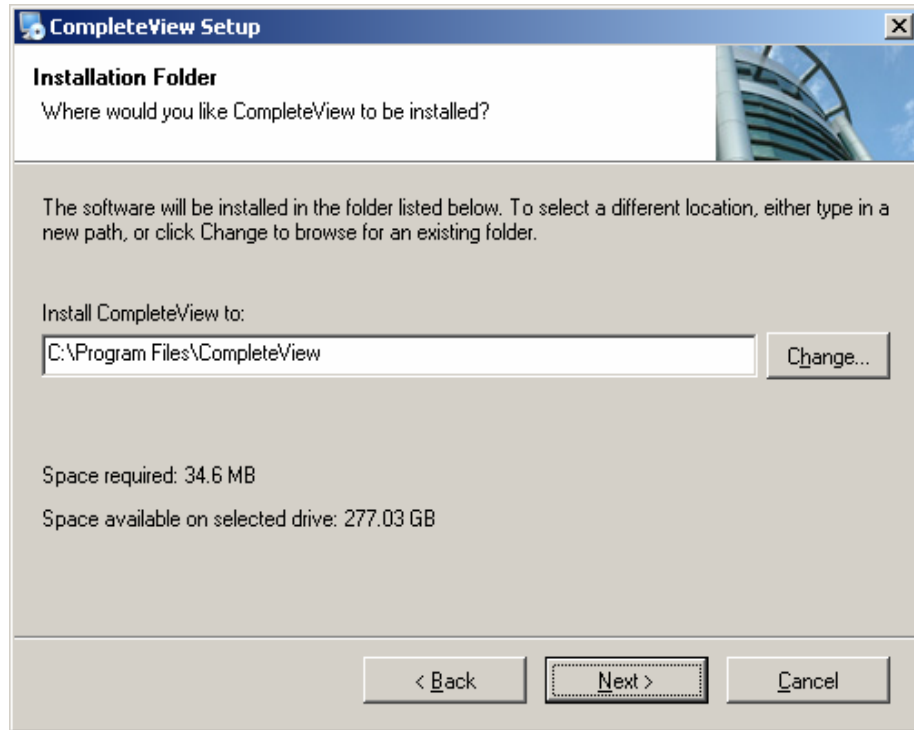
Alarm Client – CV Alarm Client

Video Player – stand alone video player

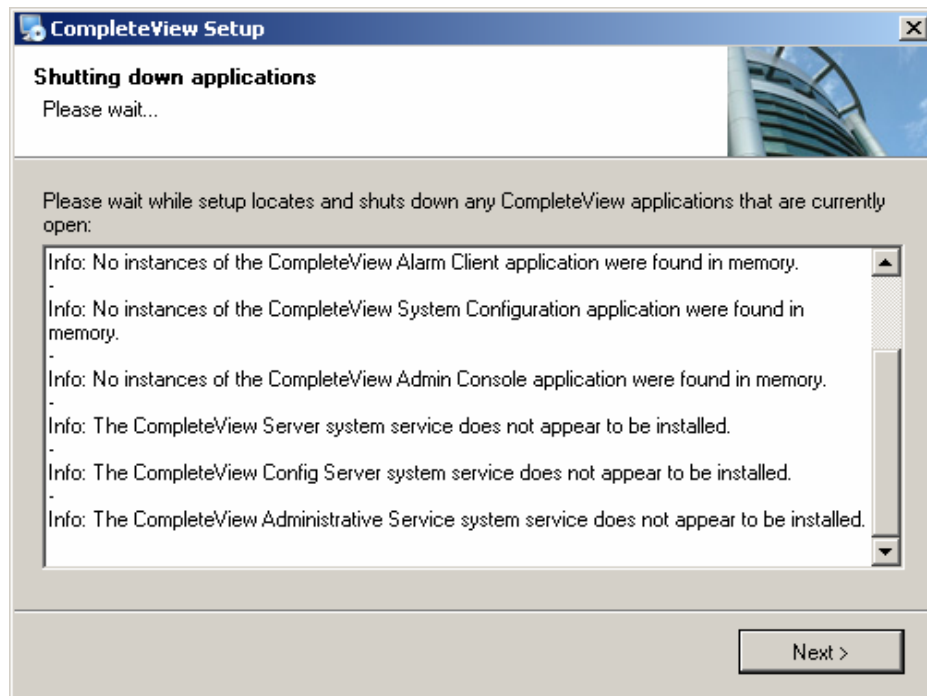
Server configuration/Admin Console should be installed only for administrators

Under server applications

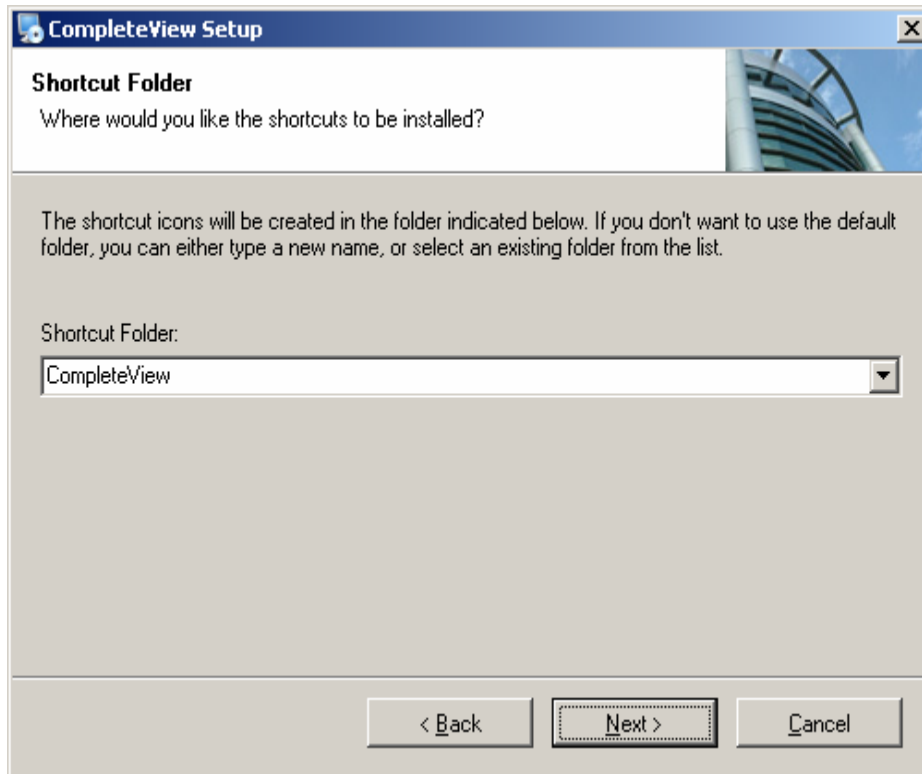
- ***do not check either the CompleteView server or the CompleteView configuration server.***



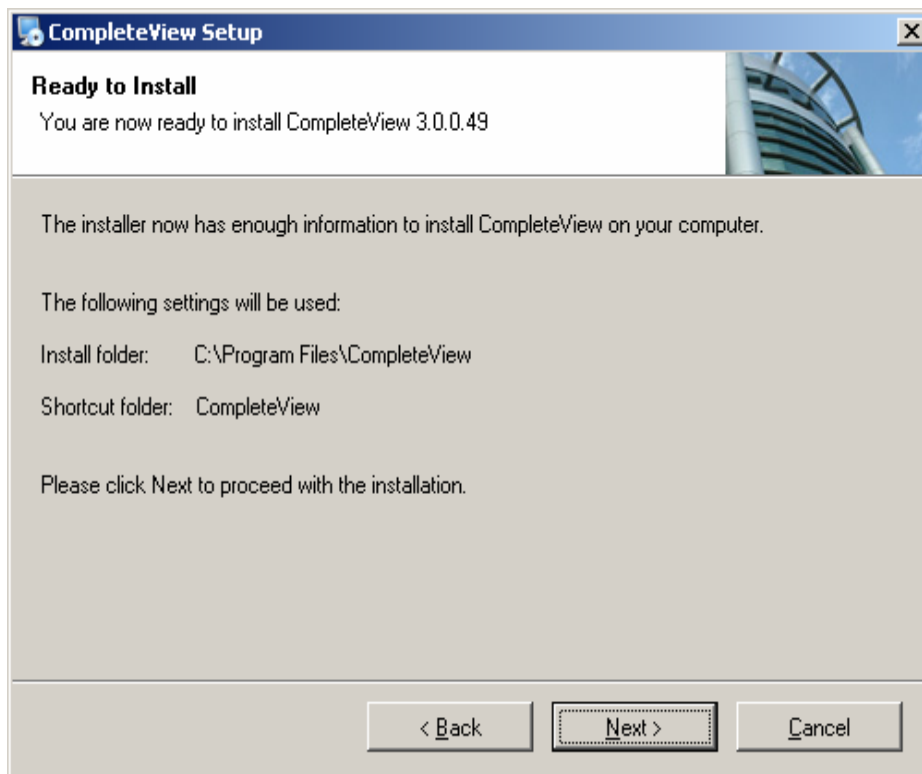
- Click Next



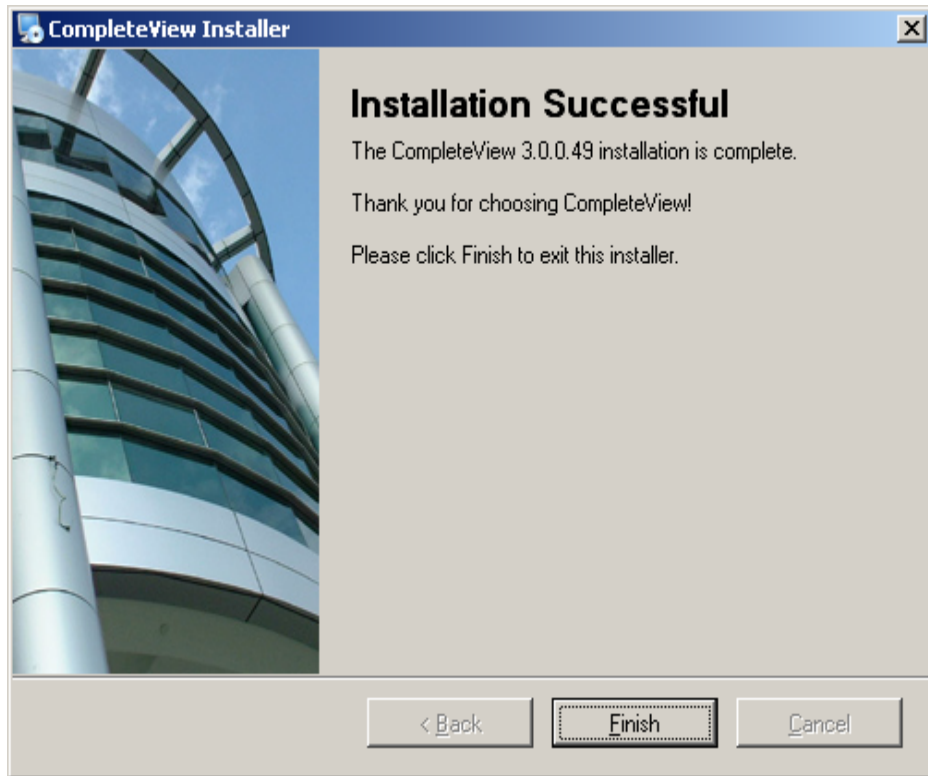
- Click Next



- Click Next



- Click Next



15. Click Finish.