

Super Two X-Y Matrix Keypad Board CICP1300XYBD Installation Instructions

WI1356 11/04

X-Y MATRIX KEYPAD BOARD INSTALLATION INSTRUCTIONS

Allows the CICP1300XYBD SUPER TWO® controller to use the classic 3x4 keypad.

THIS INSTALLATION PROCEDURE IS INTENDED FOR QUALIFIED SERVICE PERSONNEL ONLY.

1. **Remove power from the SUPER TWO®.** Inside the housing, remove the 6-pin Molex connector marked "Power In" located at the lower-right side of the panel. (see Figure 1 at right). Ensure that all power LED's are off.
2. **Insert paper insulator** under the clip of the Memory Battery (see Figure 2).
3. **Insert the metal standoffs into the SUPER TWO® main board.** See Figures 3 and 4. The three holes into which you will screw in the standoffs (1/4" drive) are located near the top right corner of the main board. **Note:** The standoffs are screwed into the main board and also into housing threads located behind main board; therefore it may be necessary to slightly loosen the 4 main board mounting screws to allow the main board holes to align with the housing threads.
4. **Place the Keypad Board on to the main board,** parallel to the top. Align the standoff holes in the Keypad Board with the standoffs installed in step 3. Align all pins of the memory board with the JP2 connector. **Note:** The socket is keyed, allowing the pins to be inserted in one direction only. Press in to secure. Insert the 4-40 3/8" SEMS pan head screws (with built-in lock washers) into the standoff holes and screw-in to secure. See Figure 5.

IMPORTANT: If the PCB mounting holes do not align with the standoffs, the PCB is misaligned. Remove the PCB and install again. **If power is applied with the PCB misaligned, the X-Y Keypad Board will be permanently damaged.**

5. **Restore power.** First restore Memory Battery by removing paper insulator (see Figure 2). Next reconnect the 6-pin Molex connector marked "Power In". The "OK" LED should blink (at a rate of approximately once every second).

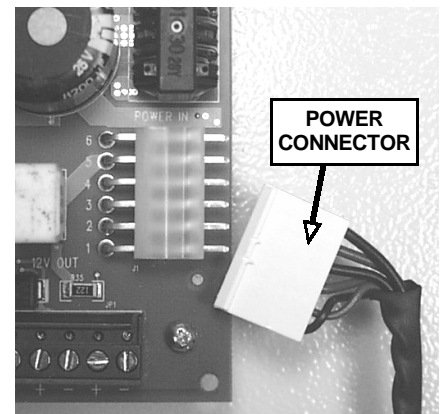


Figure 1: Remove Power.

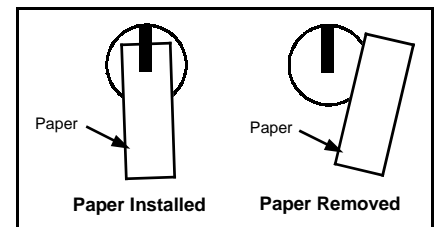


Fig. 2: Remove and Restore Memory Battery.

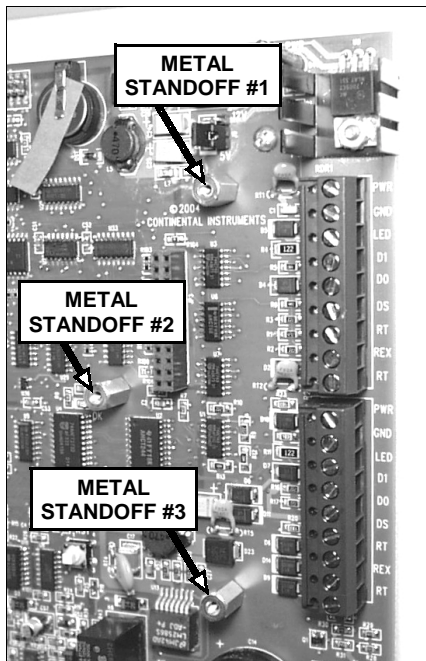


Fig. 4: Location of 3 metal standoffs:
Top right corner of main board.

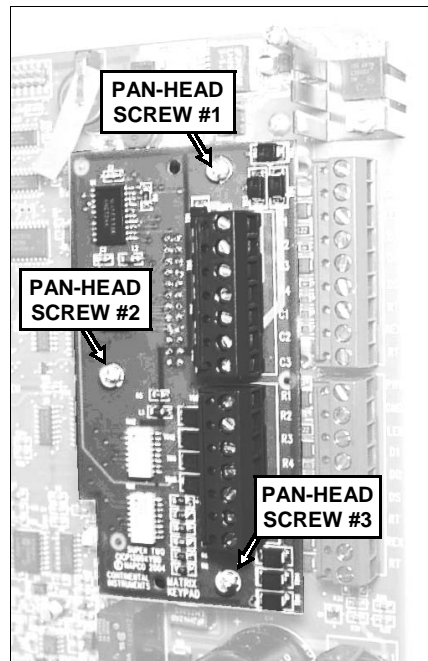


Fig. 5: Secure Keypad Board (highlighted) to three standoffs using the screws provided.

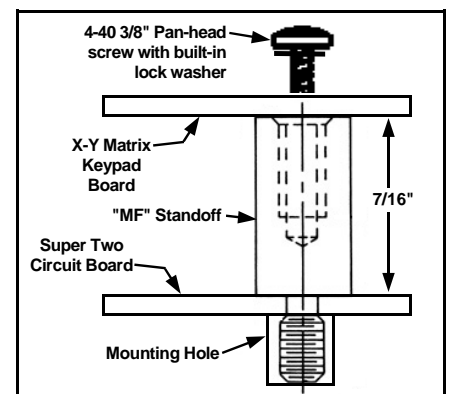


Fig. 3: 7/16" "Screw-on" type standoff.