



CompleteView Pop Up Monitor User's Manual

Version 3.8

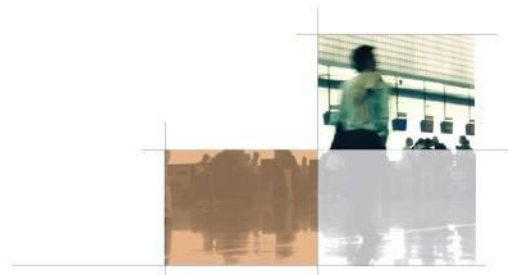


Table of Contents

- Introduction 3
- End User License Agreement 4
- System Requirements 5
- Installation 6
- Operating the Pop Up Monitor 11
 - Normal Mode..... 11
 - Text Alert Only mode..... 12
 - Persistent View 13
 - Silent Mode..... 14
- Appendix A: Installing Microsoft .NET 3.5 15

Introduction

The CompleteView Pop Up Monitor monitors alarm and motion events from selected cameras and displays video on event. The Pop Up Monitor can be used standalone or in conjunction with other CompleteView Client applications. Used as a standalone client, the Pop Up Monitor provides a means of monitoring cameras without the need for a dedicated screen. Used with other CompleteView clients, the Pop Up Monitor adds pop up video alerts, and sound alerts on event to the CompleteView Video or Alarm Clients.



Pop Up Monitor being used with Video Client's mapping interface.

End User License Agreement

Salient CompleteView™ SOFTWARE LICENSE

1. GRANT OF LICENSE. Salient grants to you the right to use one (1) copy of the Salient CompleteView Server SOFTWARE on one (1) computer. Salient grants to you the right to use one (1) copy of the Salient CompleteView Client SOFTWARE on any numbers of computers, provided that the Salient CompleteView Client is solely used to connect to a Salient CompleteView Server. The SOFTWARE is in "use" on a computer when it is loaded into temporary memory (i.e. RAM) or installed into permanent memory (e.g. hard disk, CD-ROM or other storage device) of that computer.

2. COPYRIGHT. The SOFTWARE is owned by Salient and/or its licensor(s), if any, and is protected by copyright laws and international treaty provisions. Therefore you must treat the SOFTWARE like any other copyrighted material (e.g. a book or a musical recording) except that you may either (a) make a copy of the SOFTWARE solely for backup or archival purposes or (b) transfer the SOFTWARE to a single hard disk provided you keep the original solely for backup purposes.

3. OTHER RESTRICTIONS. You may not rent, lease or sublicense the SOFTWARE but you may transfer SOFTWARE and accompanying written materials on a permanent basis provided that you retain no copies and the recipient agrees to the terms of this agreement. You may not reverse engineer, decompile, or disassemble the SOFTWARE. If the SOFTWARE is an update or has been updated, any transfer must include the most recent update and all previous versions.

4. THIRD PARTY Software. The SOFTWARE may contain third party software, which requires notices and/or additional terms and conditions. Such required third party software notices and/or additional terms and conditions are located in the readme file or other product documentation. By accepting this license agreement, you are also accepting the additional terms and conditions, if any, set forth therein.

5. TERMINATION. This License is effective until terminated. Your rights under this License will terminate automatically without notice from Salient if you fail to comply with any term(s) of this License. Upon the termination of this License, you shall cease all use of the SOFTWARE and destroy all copies, full or partial, of the SOFTWARE.

6. GOVERNING LAW. This agreement shall be deemed performed in and shall be construed by the laws of United States, Texas.

7. DISCLAIMER

THE SOFTWARE IS DELIVERED AS IS WITHOUT WARRANTY OF ANY KIND. THE ENTIRE RISK AS TO THE RESULTS AND PERFORMANCE OF THE SOFTWARE IS ASSUMED BY THE PURCHASER/THE USER/YOU. Salient Systems Corporation DISCLAIMS ALL WARRANTIES, WHETHER EXPRESS OR IMPLIED, INCLUDING BUT NOT LIMITED TO, THE IMPLIED WARRANTIES OF MERCHANTABILITY, FITNESS FOR A PARTICULAR PURPOSE, TITLE AND NON-INFRINGEMENT, OR ANY WARRANTY ARISING OUT OF ANY PROPOSAL, SPECIFICATION OR SAMPLE WITH RESPECT TO THE SOFTWARE.

Salient AND/OR ITS LICENSOR(S) SHALL NOT BE LIABLE FOR LOSS OF DATA, LOSS OF PRODUCTION, LOSS OF PROFIT, LOSS OF USE, LOSS OF CONTRACTS OR FOR ANY OTHER CONSEQUENTIAL, ECONOMIC OR INDIRECT LOSS WHATSOEVER IN RESPECT OF SALE, PURCHASE, DELIVERY, USE OR DISPOSITION OF THE SOFTWARE. TOTAL LIABILITY FOR ALL CLAIMS IN ACCORDANCE WITH THE SALE, PURCHASE, DELIVERY AND USE OF THE SOFTWARE SHALL NOT EXCEED THE PRICE PAID FOR THE SOFTWARE.

System Requirements

Minimum Software Requirements

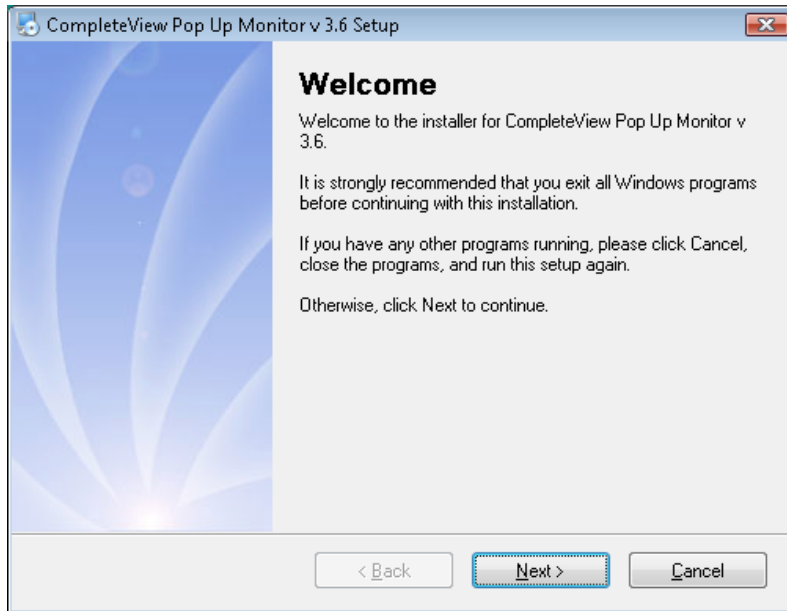
- Microsoft Windows 2000 / XP / Vista / 7
- Microsoft DirectX 9.0 or later
- Microsoft .NET 3.5

Minimum Hardware Requirements

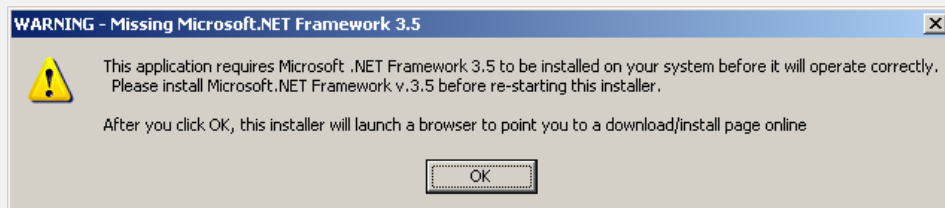
- Intel Pentium 4 CPU, 2.0 Gigahertz (GHz) or faster.
- 1GB of system memory.
- Connection to a TCP/IP network.
- A graphics accelerator with a minimum of 128MB of video memory and capable of displaying 1024x768 resolution in TrueColor (32-bit).
- Sound card and speakers for audio alerts

Installation

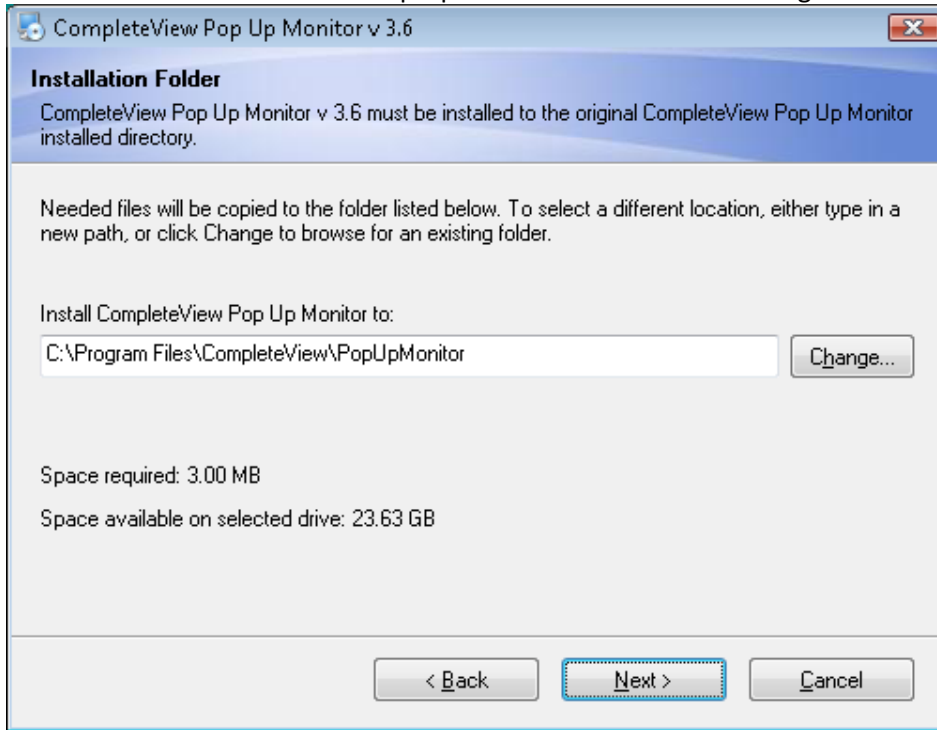
1. To begin installation, start the Pop Up Monitor installer. You will be presented with the following screen. Click Next to continue:



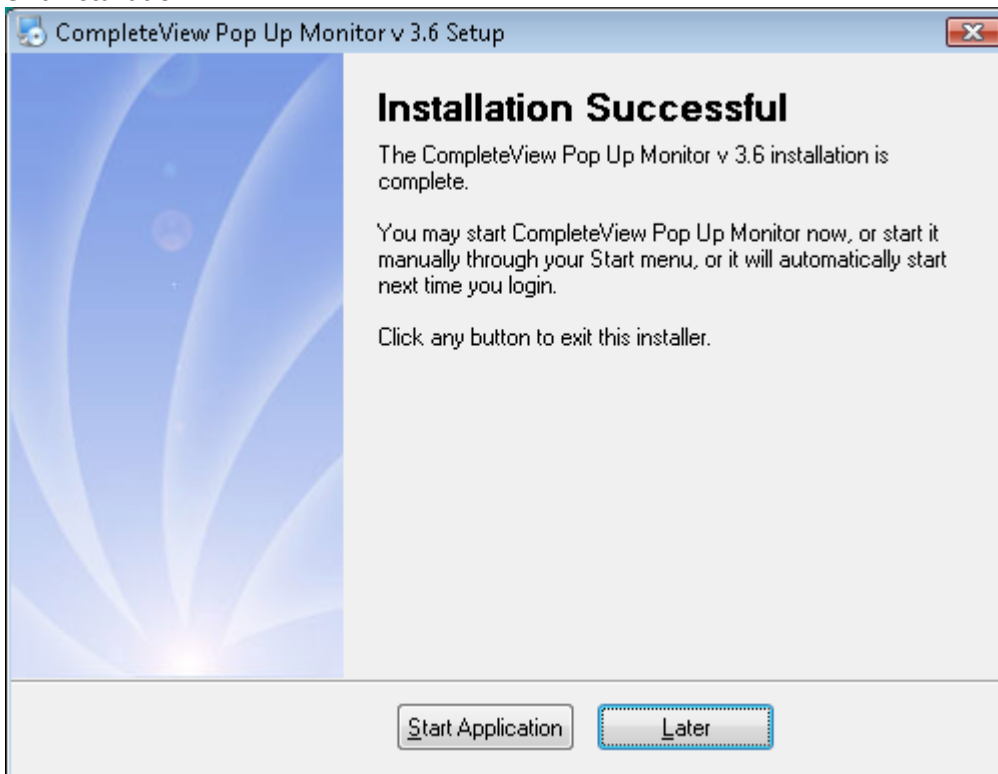
Note: If Microsoft .NET Framework v3.5 is not installed, the following notification will be displayed. Please see Appendix A for .NET installation instructions



2. Choose the folder to install the Pop Up monitor to. Click Next to begin installation immediately.



3. The following screen confirms installation has completed. The Pop Up Monitor shortcut has been installed to the "Programs"->"Startup" folder and the application will start automatically when Windows loads. Click "Start Application" to start the Pop Up Monitor immediately and exit installation.



Configuration

Basic Configuration and Adding Cameras for Event Monitoring

1. When the Pop Up Monitor is first launched the message shown in Figure 1 will be displayed, indicating a configuration file is not present. Right click the Pop Up Monitor icon in the Windows System Tray and choose 'Configuration' (Figure 2) to begin configuring the Pop Up Monitor.

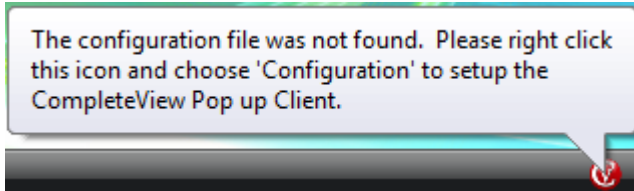


Figure 1

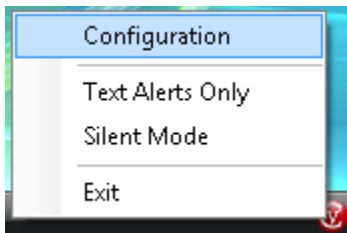


Figure 2

2. The configuration screen is displayed (Figure 3). To begin configuring the client, add a CompleteView recording server by clicking "Add Server". Multiple CompleteView recording servers can be added.

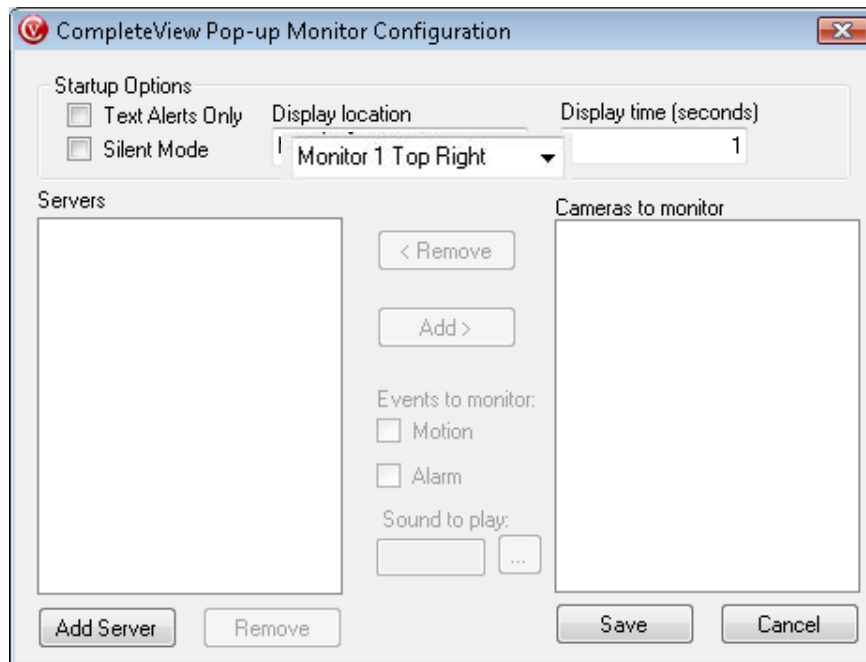


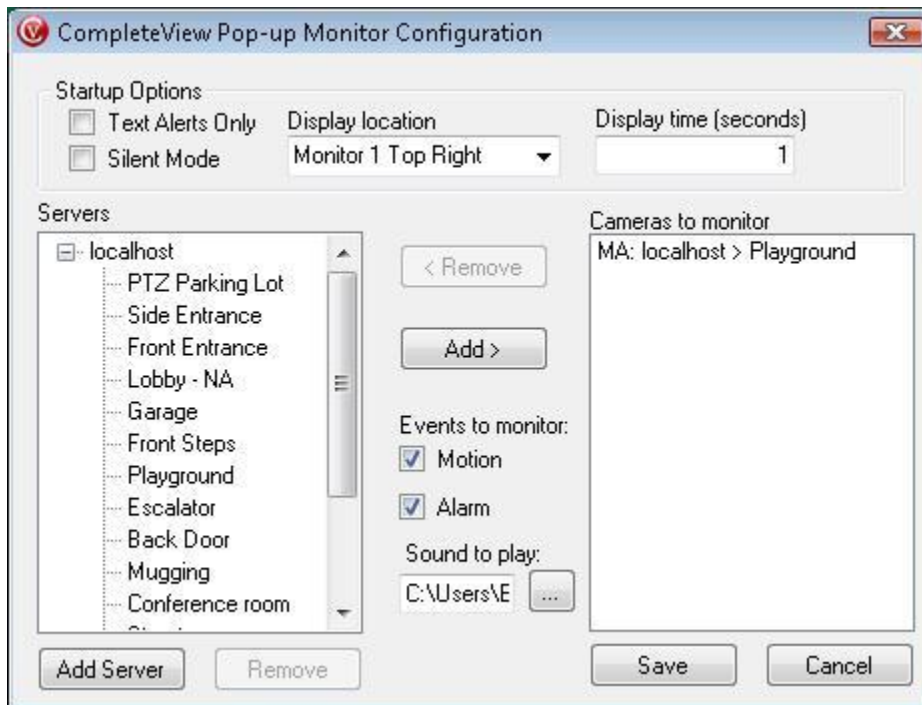
Figure 3

3. The “Connect to CompleteView server” dialog is displayed (Figure 4). Enter the server IP Address or Hostname, and username / password. The username and password of the account to be used should have API Access enabled (See the CompleteView Administrators Manual, page 43, for details).



Figure 4

4. To add a camera, first select it from the “Servers” list. The appropriate configuration options will be enabled. Choose whether to monitor the camera for motion detection events, alarm events or both by checking the “Motion” and “Alarm” checkboxes. A .WAV file (sound clip) can be selected for each camera added, which will be played on each motion or alarm event for this camera. Click the “...” button to select the .WAV sound file. Click “Add >” to add the camera as a camera to be monitored.



Startup and General Options

At the top of the “Pop Up Monitor Configuration” screen, “Startup Options” are available.

Startup Options	
<input type="checkbox"/> Text Alerts Only	Enables “Text Alerts Only” mode on startup. Text Alerts Only mode provide text balloons on event in place of video.
<input type="checkbox"/> Silent Mode	Enables “Silent Mode” on startup. Silent Mode pauses all notification and video pop ups on camera events.
Display location Monitor 1 Top Right ▼	Sets the monitor and corner of the screen the Pop Up Monitor will display video in.
Display time (seconds) 1	Sets the minimum display time in seconds. This prevents video windows from closing too quickly if a motion event starts and stops rapidly.

Operating the Pop Up Monitor

When Launched and running, the Pop Up Monitor will display the following icon in the Windows System Tray.



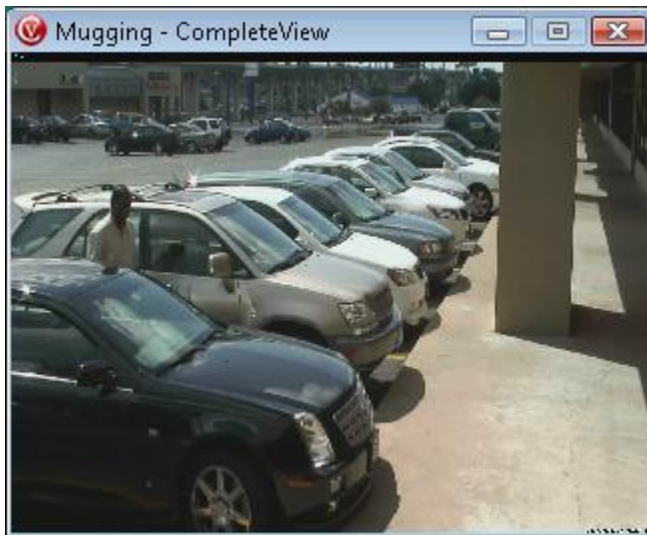
The Pop Up Monitor can operate in three modes. The following table describes the operating modes.

Pop Up Monitor: Operating Modes	
Normal Mode	The Pop Up Monitor will display a video pop up window upon a monitored event occurring.
Text Only Mode	The Pop Up Monitor will display a text balloon upon a monitored event. The text will describe the type of event (alarm or motion), the camera and server.
Silent Mode	No video or text will be displayed on event. Silent mode will pause the Pop Up Monitor.

Normal Mode

Normal Mode is the default operating mode unless otherwise changed in the configuration screen under “Startup Options”.

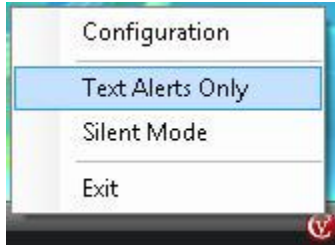
When a monitored Alarm or Motion event occurs a window will display showing video from the associated camera. The window will display on the screen and corner specified under “Startup Options” in the configuration screen.



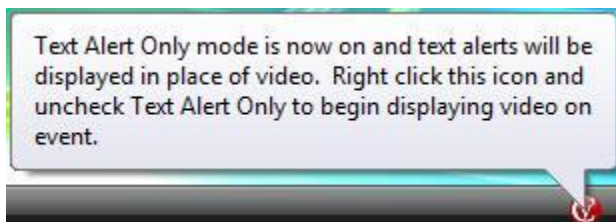
The video window will disappear when the event stops or when the minimum display time specified under “Display time (seconds)” in the configurations screen elapses, whichever occurs last. The exception to this is if another monitored camera has an event, the new event will display in place of the current camera’s video.

Text Alert Only mode

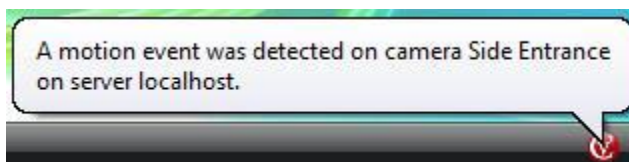
Right click the Pop Up Monitor’s system tray icon and choose Text Alert Only mode to display text instead of video on event.



The following message will be displayed, indicating the Pop Up Monitor is now in Text Alert Only mode.



When events occur, the event information will be displayed as shown below.



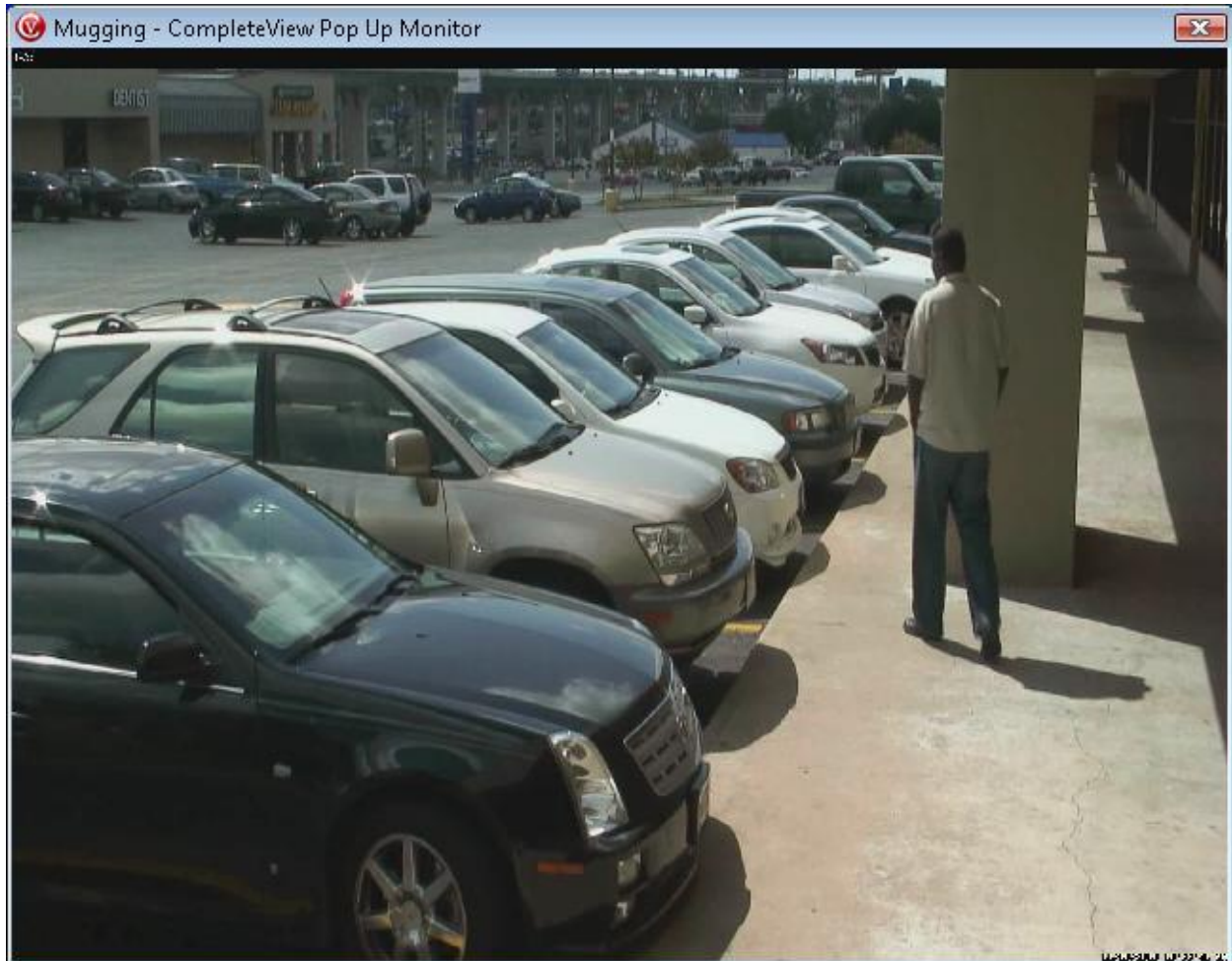
Note: Sound alerts will not play in Text Alert Only mode.

To view an event, click the text balloon and video from the associated camera will display. The video window will disappear when the event is finished.



Persistent View

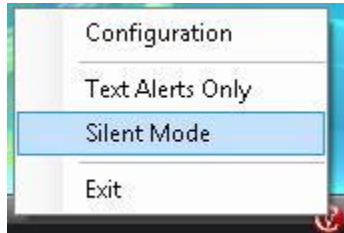
Pop Up Monitor includes a Persistent View feature. Double click the video displayed in either Normal Mode or Text Alert Only mode and a larger video window will be displayed. The Persistent View will not disappear when the event finishes. This allows the user to continue monitoring the scene after the event elapses.



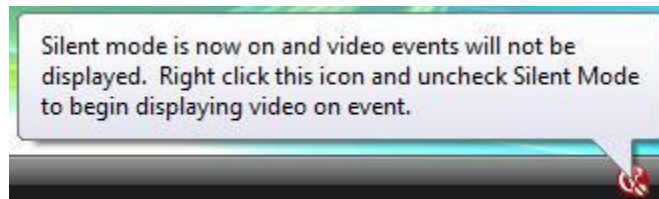
Double-clicking a video window displaying a different camera will change the persistent view from the current camera to the new one.

Silent Mode

Right click the Pop Up Monitor's system tray icon and choose "Silent Mode" to pause all text and video notification of events. Silent Mode will also be enabled when the close button ("X") is clicked in Normal Mode.



The following message will be displayed, indicating the Pop Up Monitor is now in Silent Mode.

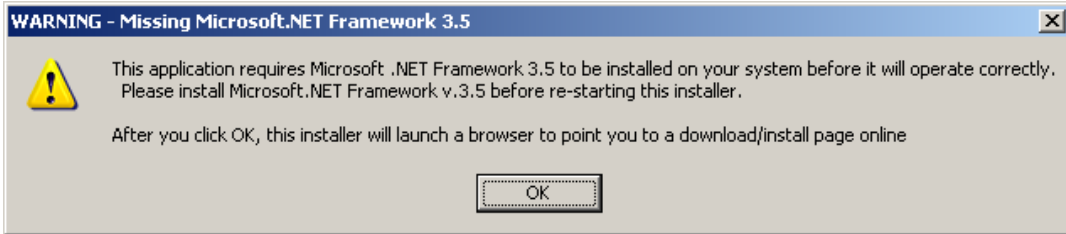


The system tray icon will also change in order to indicate Silent Mode is enabled.



Appendix A: Installing Microsoft .NET 3.5

1. If the Pop Up Monitor installer has detected .NET v3.5 is not installed, the following window will be displayed. Click the “OK” button to launch a browser window to Microsoft’s .NET 3.5 installation website.



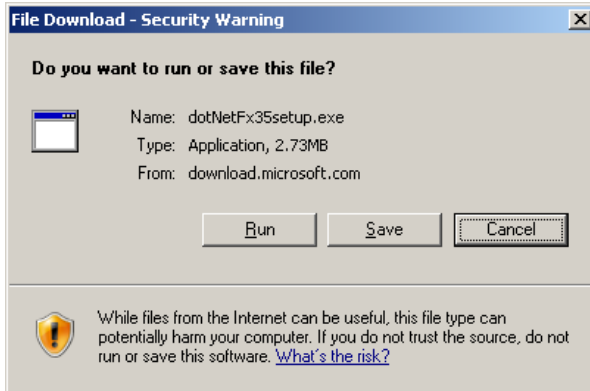
Note: The following URL will take you to the .NET 3.5 installation website without the aid of the Pop Up Monitor installer:

<http://www.microsoft.com/downloads/en/details.aspx?FamilyId=333325fd-ae52-4e35-b531-508d977d32a6&displaylang=en>

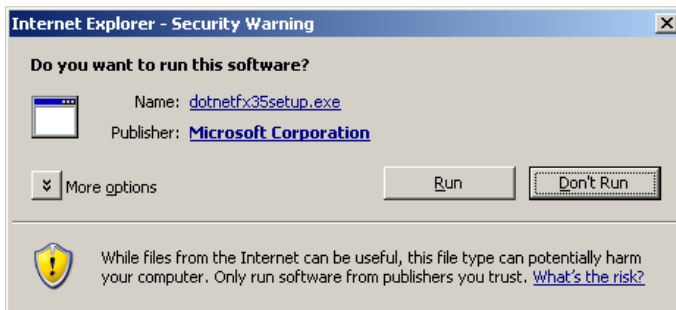
2. Click the “Download” button on the following website:



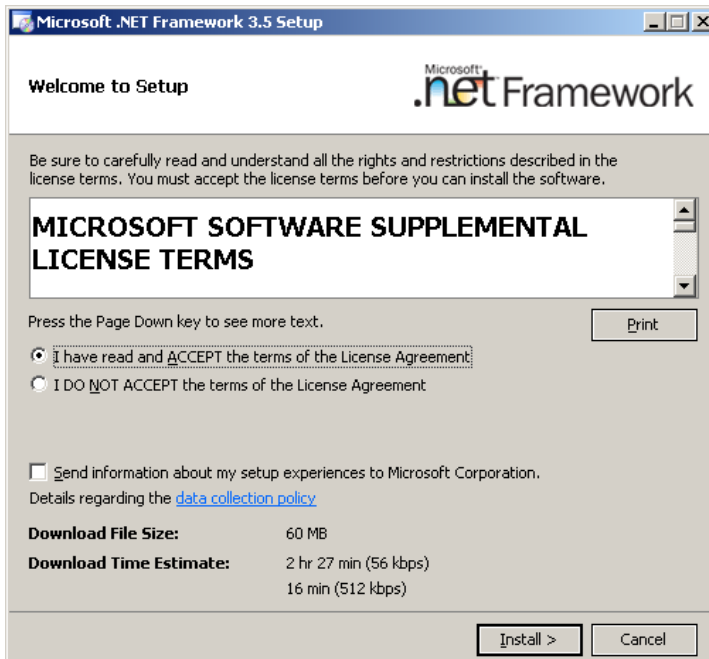
3. Choose “Run” from the *File Download – Security Warning* dialog box.



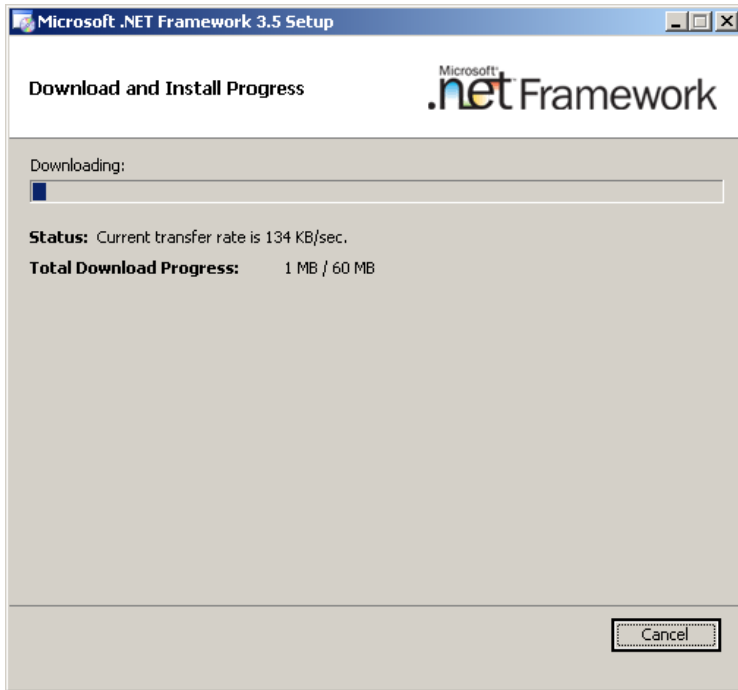
4. Once the file has downloaded the *Internet Explorer – Security Warning* dialog will be displayed. Choose “Run” to continue.



5. The *Microsoft .NET Framework 3.5 Setup* program will launch. Accept the license agreement and click “Install”.



6. .NET installation components will automatically begin downloading and installing.



7. Once the download and installation is complete, click "Exit" and proceed with the Pop Up Monitor installer.

