

Continental Access

A Napco Security Group Company



V2.8.x Upgrade on a Workstation Procedure

Very Important: This document is to be used on an upgrade from V2.6.x or V2.7.x. If upgrading from V2.5.16 or earlier, refer to the Important Information on page 2.

REVISION A

DATE: 9/22/2011



CA3000 Software Installation Procedure

Continental Access and CardAccess3000 are registered trademarks of Napco Security Group
Microsoft® is a registered trademark of Microsoft Corporation.
Windows® is a registered trademark of Microsoft Corporation.
CardAccess® is a registered trademark of Napco Security Group.

Document Title V 2.8.x Workstation Upgrade Procedure

This document contains proprietary information of Continental Access. Unauthorized reproduction of any portion of this manual without the written authorization of Continental Access is prohibited. The information in this manual is for informational purposes only. It is subject to change without notice. Companies, names and data used in examples herein are fictitious unless otherwise noted. Continental assumes no responsibility for incorrect information this manual may contain.

Continental Access
355 Bayview Avenue
Amityville, NY 11701
Phone (631) 842-9400
Fax (631) 842-9135

Web: <http://www.cicaccess.com>

License Agreement

NOTICE TO USER: THIS PACKAGE IS A CONTRACT. BY OPENING THIS SEALED PACKAGE YOU ACCEPT ALL THE TERMS AND CONDITIONS OF THIS AGREEMENT.

Use of the Software: You may install and use the software only for the purpose intended.

Copyright. You may not duplicate or copy the software or documentation, except that you may make one backup copy of the software. All copies must bear copyright notices contained in the original copy.

Limited warranty: Continental Access warrants that the software will perform substantially in accordance with the printed documentation when correctly installed on a properly configured computer for which it is intended. Continental Access warrants the discs upon which this product is recorded to be free from defects in materials and workmanship under normal use for a period of 1 year from the date of purchase. During the warranty period Continental Access will replace discs, which prove to be defective.

Important Information - Must be read before installing software.

- 1) This document covers a CardAccess 3000 V2.8.x workstation upgrade.
- 2) VERY IMPORTANT- If upgrading from V2.5.16 or earlier workstation, refer to the “Upgrading CardAccess 3000 to V2.6” procedure. This document will assist with uninstalling CardAccess3000, Sql2000 client tools, and all other components. After all the components are removed, you must install CardAccess 3000 as a new version 2.8.x workstation install.
- 3) If possible, always refer to the Continental Access website (www.cicaccess.com click support/click document library) for the latest documentation. The released CD may not have the latest documentation.
- 4) The installation of a CA3000 Workstation requires a valid V2.8 security key/license on the CA3000 Server/Host. The security key/ license must support 5 or more workstations. If your security key displays “max workstations =1”, no workstations or web clients are supported.
- 5) Verify the version of CardAccess 3000 you are upgrading to, is the same version on the CardAccess 3000 host computer.
- 6) If Badging3000 (EPI) is currently licensed and installed on the workstation you are upgrading, DO NOT REVOKE THE EPI LICENSES OR REMOVE THE BADGING3000 SOFTWARE.
- 7) The EPI Badging3000 software is not supported on a 64 bit computer. If you are using a 64 bit CardAccess 3000 host, you must install the EPI Badging 3000 software on a 32 bit workstation.
- 8) Before upgrading, refer to the CardAccess 3000 computer specifications to determine if your computer meets the specs for a CardAccess 3000 V2.8.x workstation.
- 9) You MUST have FULL ADMINISTRATOR permissions to install and execute integration features (EPI, DVR, NAPCO, Wireless Locks).

CA3000 v2.8 Workstation PC Recommendations

	Workstation-Event Viewing Only	Workstation-Event Viewing + any one Integration feature (Badging, DVR/NVR, Napco, Scripting, or Dynamic Maps)	Workstation-Event Viewing + any two Integration features (Badging, DVR/NVR, Napco, Scripting, or Dynamic Maps)
Processor	Pentium Core2 Duo, 2.2GHz min	Pentium Core2 Duo, 2.6MHz min	Dual Pentium Core2 Duo, Pentium Quad Core or Pentium Xeon
Ram	2 GB Min	3 GB + Min	3 GB +
Hard Drive	80 GB min	160 GB min	250 GB min
USB Ports	2	4	4
Serial Ports	N/A	N/A	N/A
Parallel Ports	1	1	1
Mouse	PS2 or USB	PS2 or USB	PS2 or USB
Monitor	17" (1024 x 768) min	17" (1024 x 768) min	17" (1024 x 768) min
DVDROM	48x/16x	48x/16x	48x/16x
DVDR	24x/4x Optional	24x/4x Optional	24x/4x Optional
Sound	Recommended	Recommended	Recommended
Network Card	100 NIC Ethernet minimum	100/1000 NIC Ethernet	100/1000 NIC Ethernet
Operating System	Win XP Pro w/SP3, Win 7 Pro 32/64 bit, Win 2003 Server 32/64 bit, or Win 2008 Server 32/64 bit.	Win XP Pro w/SP3, Win 7 Pro 32/64 bit, Win 2003 Server 32/64 bit, or Win 2008 Server 32/64 bit.	Win XP Pro w/SP3, Win 7 Pro 32/64 bit, Win 2003 Server 32/64 bit, or Win 2008 Server 32/64 bit.
Database	N/A	N/A	N/A
Backup	N/A	N/A	N/A
Notes:		For large corporations, hospitals or colleges, a frame video capture card and high-end digital camera is recommended on a badging station. Depending on the amount of photo's needed to be taken per-day on a Badging station; or for other functions the number of DVRs/NVRs or Napco Panels Integrated; or the number of Scripts or Dynamic Maps running additional RAM may be required.	

NOTE: EPI Badging 3000 is not supported on a 64 bit computer. You must install it on a 32 bit computer.

Scope

This document contains information regarding the upgrade of a CardAccess 3000 V2.8.x Workstation. This procedure includes the installation of the EPI Badging 3000. If the EPI Badging 3000 is already installed and the licenses are activated, DO NOT revoke the EPI licenses and DO NOT reinstall the Badging 3000. If you choose not to install Badging 3000 during this upgrade, some of the following steps/screen shots will be different.

WARNING: Badging 3000 is not supported on a 64 bit computer. If Badging 3000 is being installed, you must use a 32 bit computer.

VERY IMPORTANT: Throughout the installation of the prerequisites, there will be multiple references to the computer requiring a reboot. If this occurs, you MUST manually restart the CardAccess 3000 installation setup after the computer reboots.

InstallShield Wizard

If auto start is enabled on your system, the **Auto Play** screen will display after inserting the CA3000 DVD in the DVD drive (Refer to Figure 1). Click "**Run Launch.exe**". Verify the **CardAccess 3000 Version 2.8 Setup** screen displays (refer to figure 3). Skip ahead to the steps following Figure 3.

Warning: If auto start is not enabled on your system, nothing will occur after inserting the CA3000 DVD. Follow the steps below to execute the program.

Click the **Start** menu on your PC. In the **Search Programs and Files** box or the **Start/Run**, type **d:\launch.exe** (Refer to Figure 2). After pressing ENTER, the **CardAccess3000 Version 2.8 setup** screen will display (Refer to Figure 3).

Note: "d:" represents the CD-ROM drive letter. This letter will be different depending on the drive letter of your CD-ROM.



Figure 1.



Figure 2.



Figure 3.

Click on the **Install CardAccess 3000** button. The CardAccess 3000 Prerequisites will be installed if they are not currently on the computer.

Pre-requisites

NOTE: Only the prerequisites which need to be installed will be listed in the requirements box (Refer to figure 4). During the installation of the prerequisites, the computer might require a reboot. If you are prompted to reboot, click YES (Refer to figure 5.) After the computer reboots, the CardAccess 3000 setup program must be restarted again (Refer to figures 1, 2 and 3).

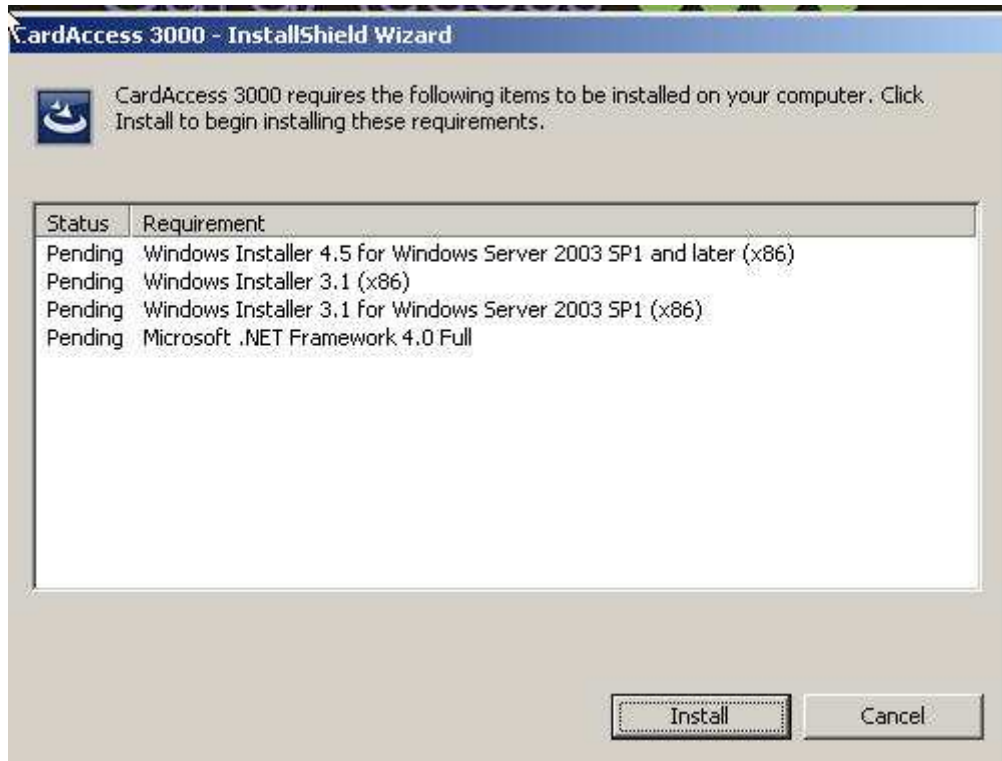


Figure 4.

Click **Install**. The first prerequisite in the list will install. After the installation begins, you will be prompted to reboot (Refer to figure 5).



Figure 5.

Click **Yes**. The computer will reboot and you must restart the CardAccess 3000 setup.

Microsoft .NET Framework Installation

The installation of CardAccess 3000 V2.8.x requires the Microsoft .NET Framework 4.0. After clicking **Install**, a progress bar will display (Refer to figure 6).

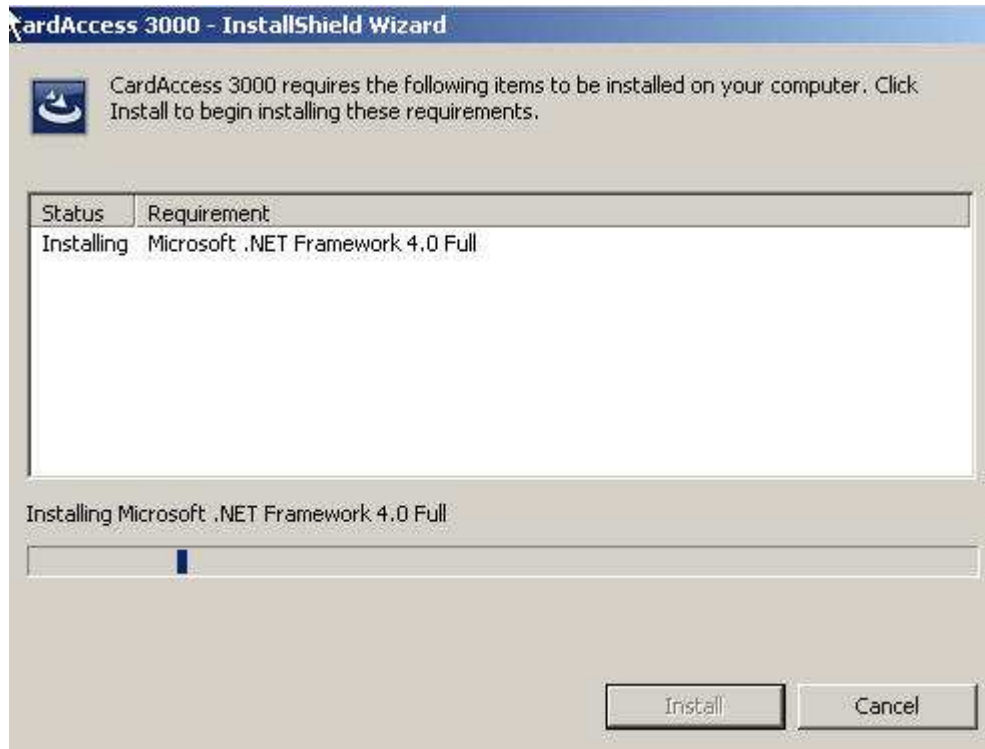


Figure 6.

NOTE: The Microsoft .Net framework takes a few minutes to install. **Please be patient.**

CardAccess 3000 Upgrade

After the prerequisites are installed, the Welcome to CardAccess 3000 Setup program screen will display (Refer to figure 7).

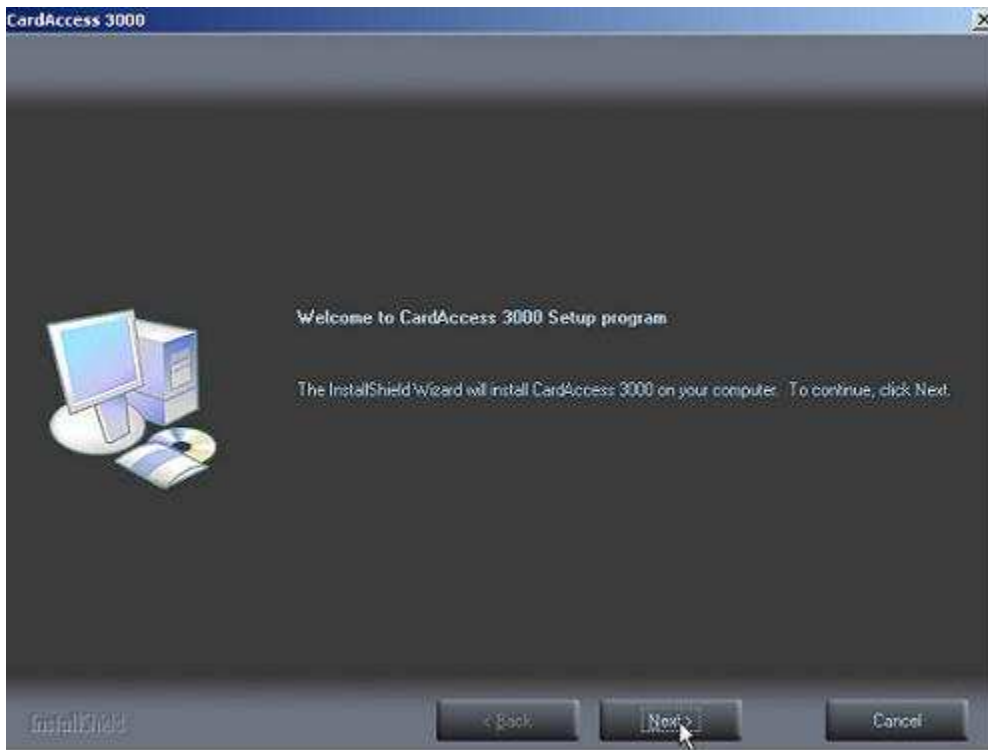


Figure 7.

Click **Next**. The **Setup Type** screen will display (Refer to Figure 8).

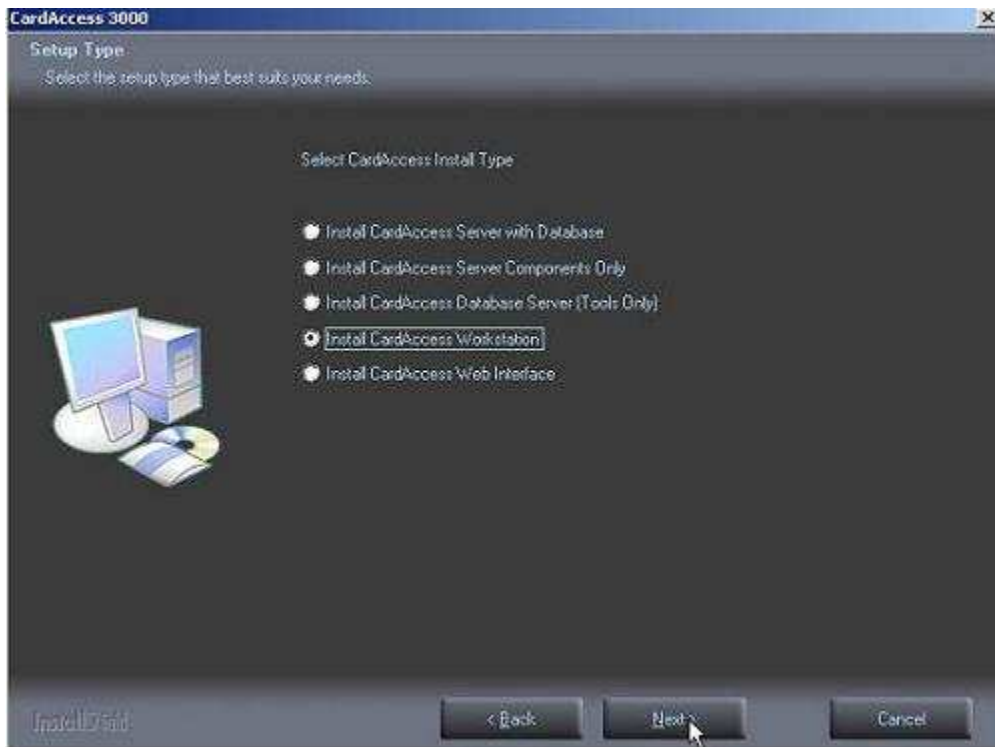


Figure 8.

Select **Install CardAccess Workstation**. Click **Next**. The **Select CardAccess Destination Folder** screen will display (Refer to figure 9).

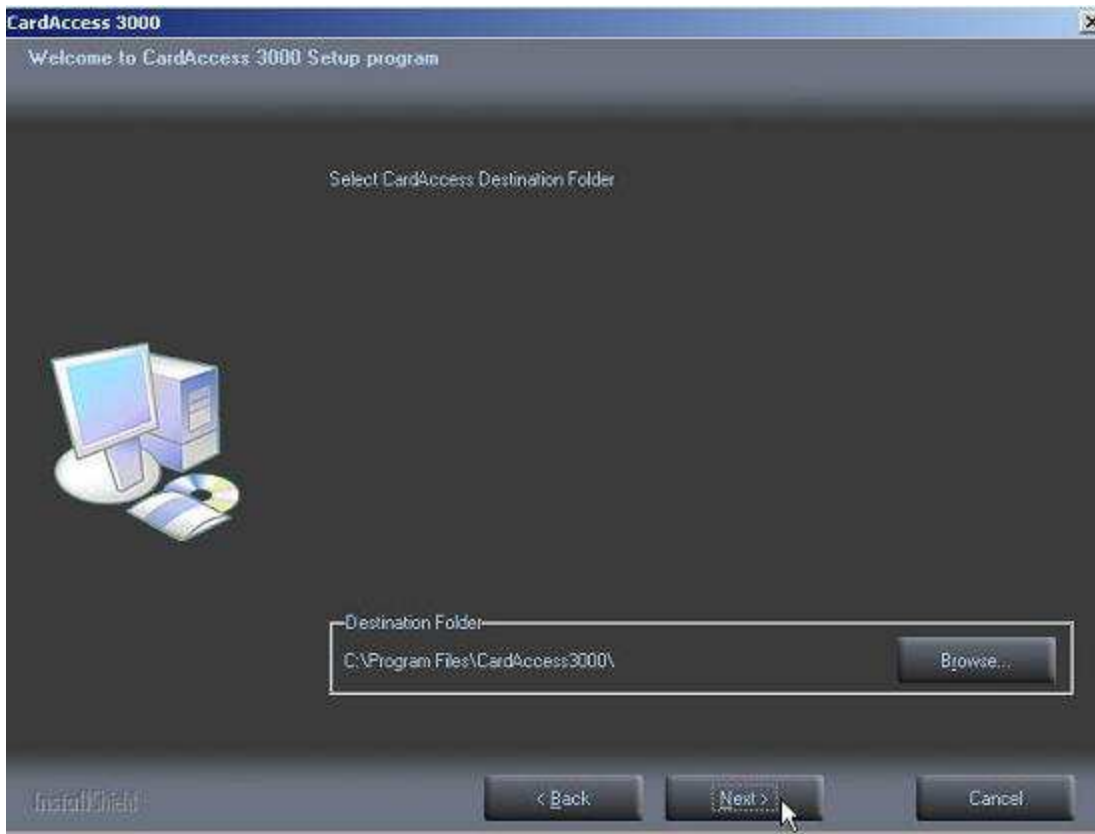


Figure 9.

Click **Next**. The **Select Additional CardAccess components to install** (Refer to figure 10).

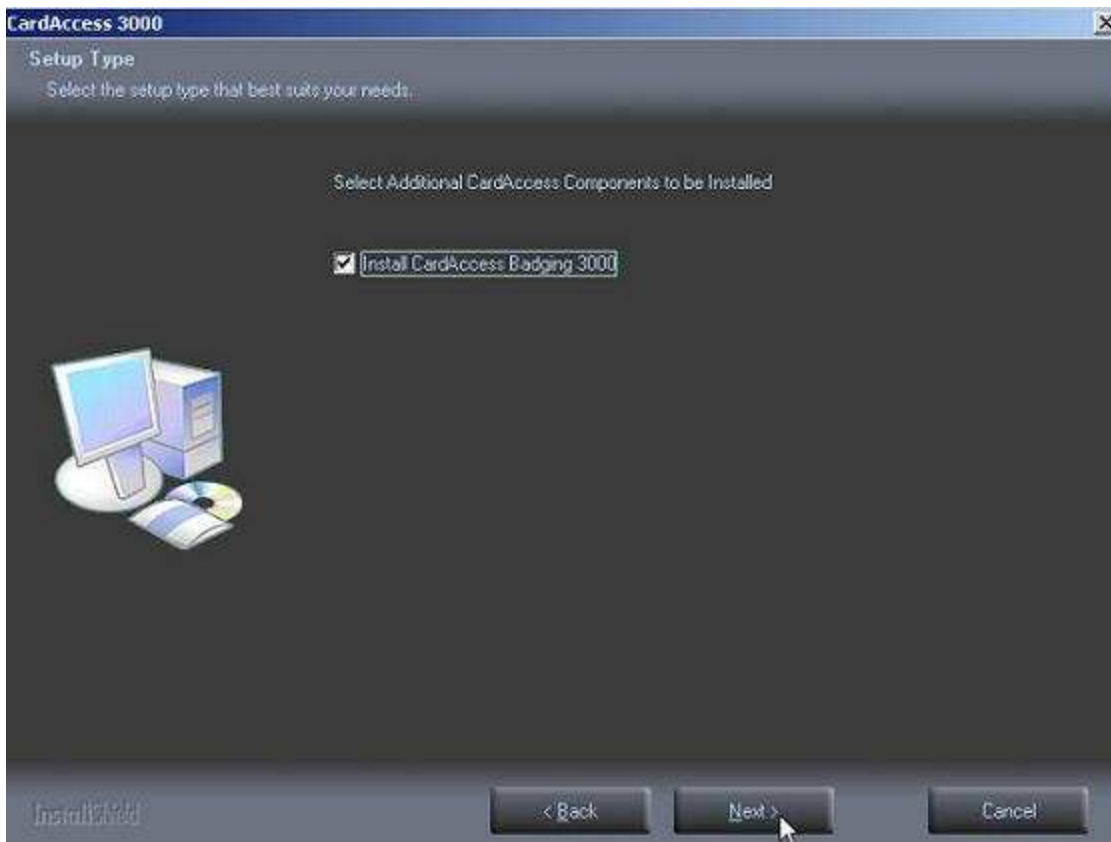


Figure 10.

VERY IMPORTANT: As previously noted, do not select this option if EPI Badging 3000 is already on the computer prior to the upgrade.

Click **Next**. The **Current Settings** screen will display (Refer to figure 11).

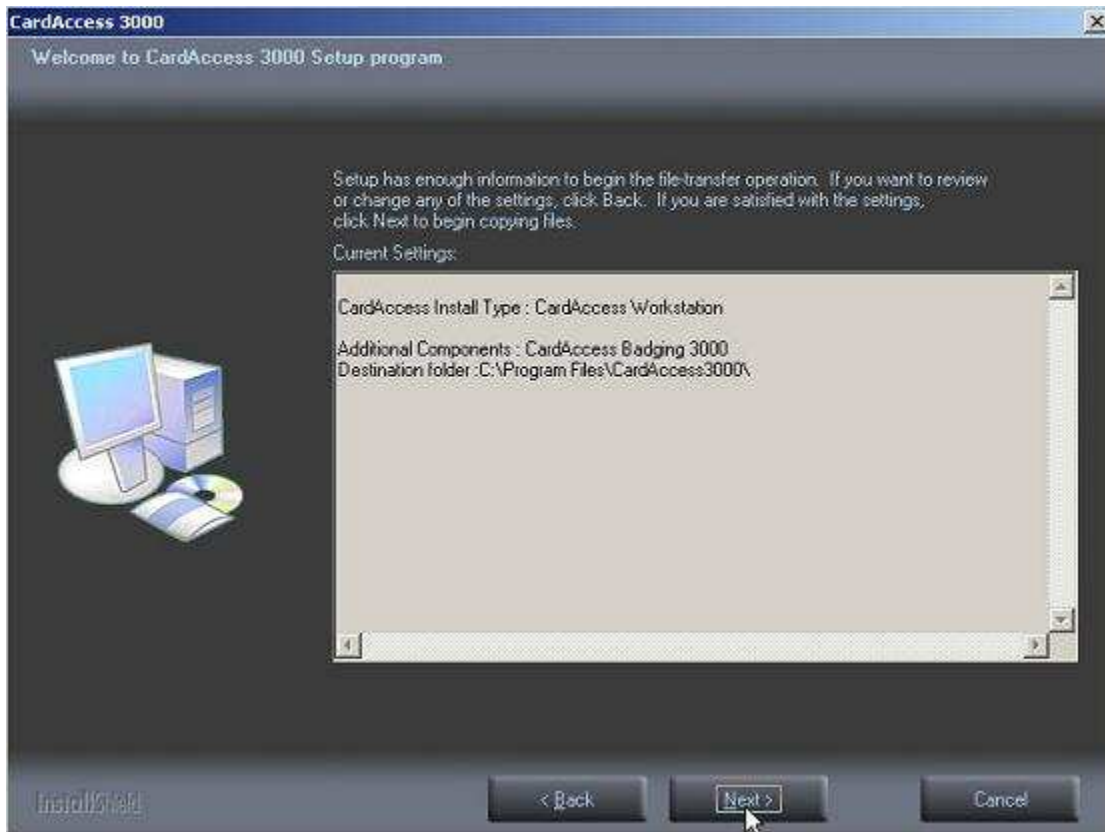


Figure 11.

After reviewing the current settings, click **Next**. A progress bar will display while the CardAccess 3000 is installing (Refer to figure 12).

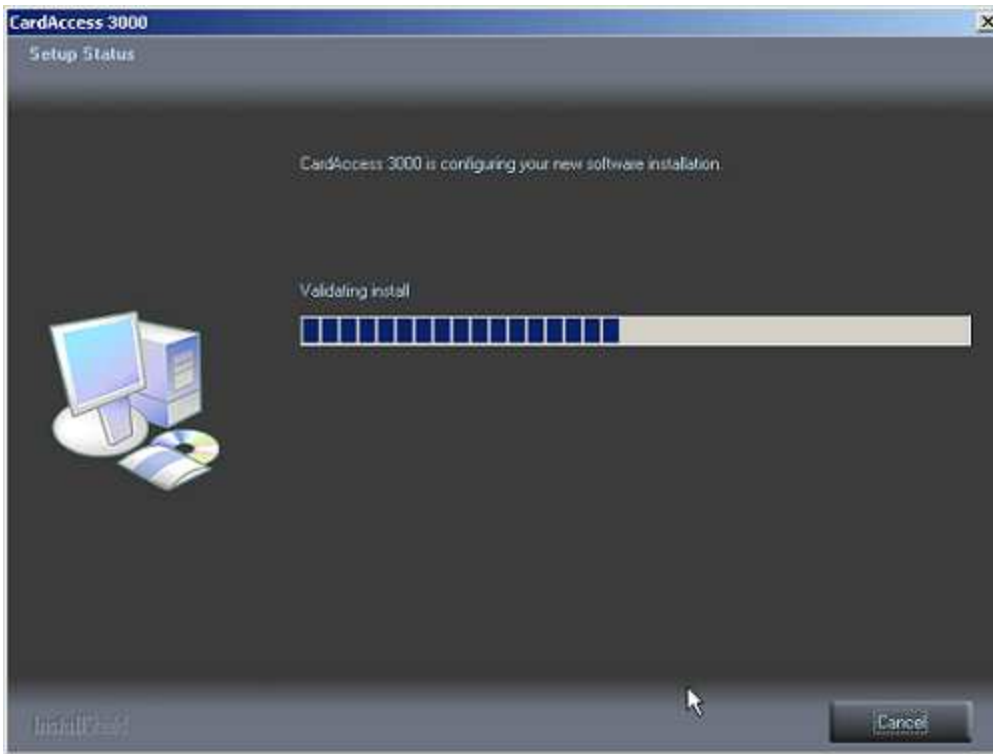


Figure 12.

After the CardAccess 3000 configuration is complete, the **Would you like to Install Badging 3000?** Screen will display.



Figure 13.

Click **Yes** if you would like to install Badging 3000. Click **No** if Badging 3000 is already on the computer.



Figure 14.

Click **OK**. The Client Connection utility screen will display (Refer to figure 15).



Figure 15.

WARNING: If the following settings are not configured properly, the CardAccess 3000 will fail to launch.

- Server IP Address – You must configure this to the IP address of the CardAccess 3000 Server/Host.
- Server Port – This should be 9000 by default
- Workstation Selection – Select an available workstation number (Do not leave this at Host PC).

After all the configuration settings are correct, click **Save Settings** (Refer to figure 16).



Figure 16.

Click **OK**. CardAccess 3000 **Readme Information** screen will display (Refer to figure 17).

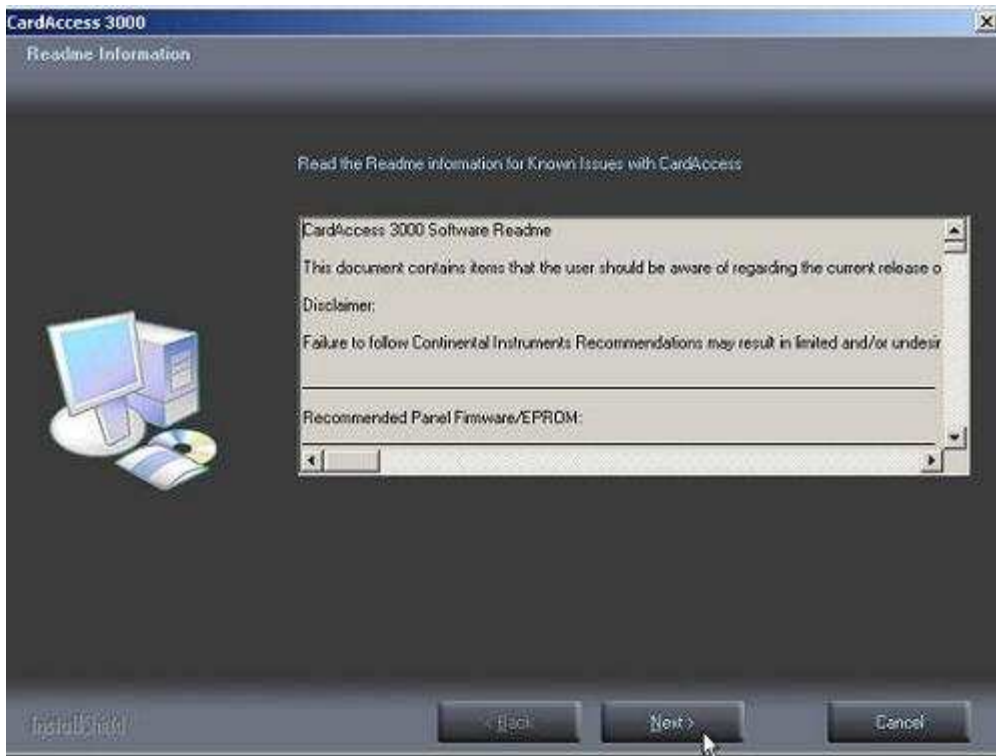


Figure 17.

After reviewing the CardAccess 3000 Software Readme, click **Next**. The **InstallShield Wizard Complete** screen will display (Refer to figure 18).

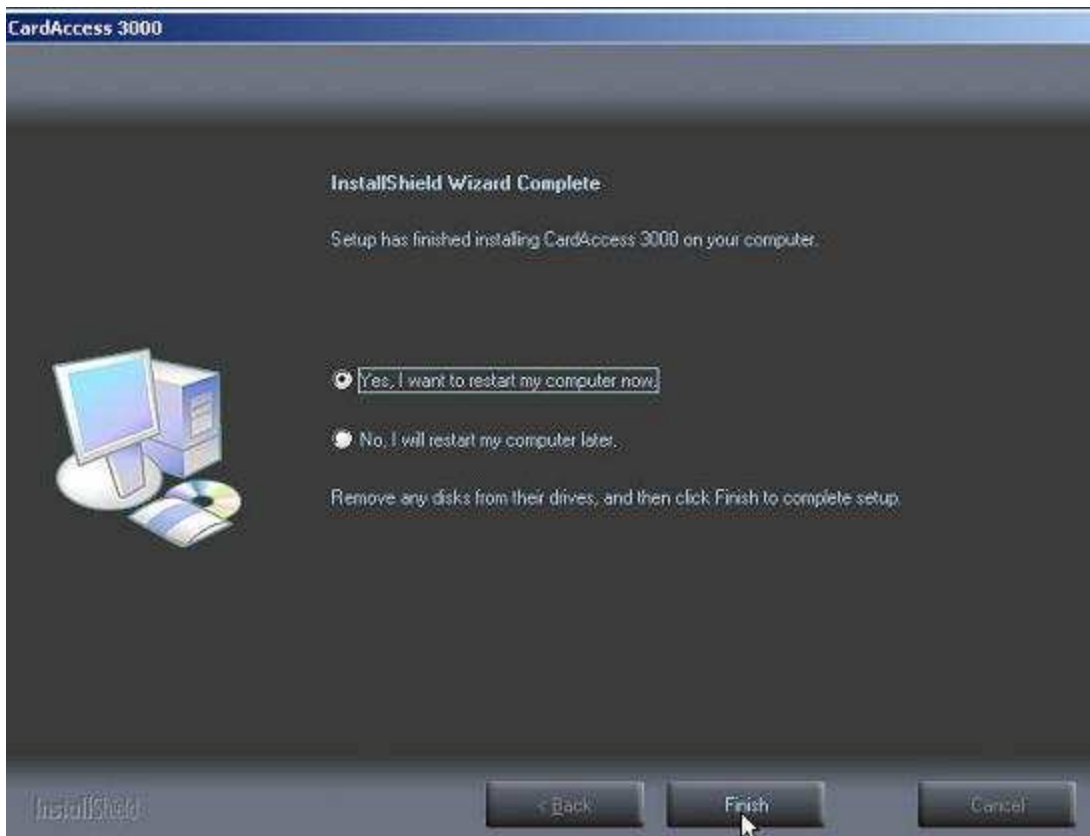


Figure 18.

Select the **Yes, I want to restart my computer now** option. This should be selected by default.

Note: If you selected to install the EPI Badging 3000, the installation will occur now.

The CardAccess 3000 upgrade is now complete.