

Continental Access

A Napco Security Group Company



V2.7.x Upgrade on a Workstation Procedure

Very Important: This document is to be used on an upgrade from V2.6.x or an earlier version of V2.7.x. If upgrading from V2.5.16 or earlier, refer to the Important Information on page 2.

REVISION C

DATE: 11/04/2010

CardAccess® 3000 



CA3000 Software Installation Procedure

Continental Access and CardAccess3000 are registered trademarks of Napco Security Group
Microsoft® is a registered trademark of Microsoft Corporation.
Windows® is a registered trademark of Microsoft Corporation.
CardAccess® is a registered trademark of Napco Security Group

Document Title V 2.7.x Workstation Upgrade Procedure

This document contains proprietary information of Continental Access. Unauthorized reproduction of any portion of this manual without the written authorization of Continental Access is prohibited. The information in this manual is for informational purposes only. It is subject to change without notice. Companies, names and data used in examples herein are fictitious unless otherwise noted. Continental assumes no responsibility for incorrect information this manual may contain.

Continental Access
355 Bayview Avenue
Amityville, NY 11701
Phone (631) 842-9400
Fax (631) 842-9135

Web: <http://www.cicaccess.com>

License Agreement

NOTICE TO USER: THIS PACKAGE IS A CONTRACT. BY OPENING THIS SEALED PACKAGE YOU ACCEPT ALL THE TERMS AND CONDITIONS OF THIS AGREEMENT.

Use of the Software: You may install and use the software only for the purpose intended.

Copyright. You may not duplicate or copy the software or documentation, except that you may make one backup copy of the software. All copies must bear copyright notices contained in the original copy.

Limited warranty: Continental Access warrants that the software will perform substantially in accordance with the printed documentation when correctly installed on a properly configured computer for which it is intended. Continental Access warrants the discs upon which this product is recorded to be free from defects in materials and workmanship under normal use for a period of 1 year from the date of purchase. During the warranty period Continental Access will replace discs, which prove to be defective.

Important Information - Must be read before installing software.

- 1) This document covers CardAccess 3000 V2.7.19 B223 and later.
- 2) **VERY IMPORTANT-** If upgrading from V2.5.16 or earlier workstation, refer to the “Upgrading CardAccess 3000 to V2.6” procedure. This document will assist with uninstalling CardAccess3000, Sql2000 client tools, and all other components. After all the components are removed, you will install CA3000 as a new version 2.7 workstation install.
- 3) If possible, always refer to the Continental Access website (www.cicaccess.com click support/click library) for the latest documentation. The released CD may not have the latest documentation.
- 4) **VERY IMPORTANT-** If upgrading from V2.5.16 or earlier workstation, refer to the “Upgrading CardAccess 3000 to V2.6” procedure. This is very important because V2.5.16 and earlier is based on a SQL 2000 database engine. When upgrading to V2.7.x, it is very important to remove all components of CA3000 and SQL 2000 before installing V2.7.x. This applies to a CA3000 host or a CA3000 workstation upgrade.
- 5) A CardAccess 3000 workstation will only have the SQL Client tools on it. V2.7.x uses the SQL2005 Client tools.
- 6) Verify the version of CA3000 you are upgrading to, is the same version on the CA3000 host computer.
- 7) If Badging3000 (EPI) is currently licensed and installed on the workstation you are upgrading, **DO NOT REVOKE THE EPI LICENSES OR REMOVE THE BADGING3000 SOFTWARE.**
- 8) Before upgrading, refer to the CA3000 computer specifications to determine if your computer meets the specs for a CA3000 V2.7.x workstation.

CA3000 v2.7 Workstation PC Recommendations

	Workstation-Event Viewing Only	Workstation-Event Viewing + any one Integration feature (Badging, DVR/NVR, Napco, Scripting, or Dynamic Maps)	Workstation-Event Viewing + any two Integration features (Badging, DVR/NVR, Napco, Scripting, or Dynamic Maps)
Processor	Pentium Core2 Duo, 2.2GHz min	Pentium Core2 Duo, 2.6MHz min	Dual Pentium Core2 Duo, Pentium Quad Core or Pentium Xeon
Ram	1 GB Min	2 GB Min	3 GB Min
Hard Drive	80 GB min	160 GB min	250 GB min
USB Ports	2	4	4
Serial Ports	N/A	N/A	N/A
Parallel Ports	1	1	1
Mouse	PS2 or USB	PS2 or USB	PS2 or USB
Monitor	17" (1024 x 768) min	17" (1024 x 768) min	17" (1024 x 768) min
CD/DVDROM	48x/16x	48x/16x	48x/16x
CDRW/DVDR	24x/4x Optional	24x/4x Optional	24x/4x Optional
Sound	Recommended	Recommended	Recommended
Network Card	100 NIC Ethernet minimum	100/1000 NIC Ethernet	100/1000 NIC Ethernet
Operating System	Win XP Pro w/SP3, Win 2003 32 bit. Win 7 Pro 32 bit. Note: 64 bit computers are not supported.	Win XP Pro w/SP3, Win 2003 32 bit, or Win 2008 32 bit. Note: 64 bit computers are not supported.	Win XP Pro w/SP3, Win 2003 32 bit, or Win 2008 32 bit. Note: 64 bit computers are not supported.
Database	N/A	N/A	N/A
Backup	N/A	N/A	N/A
Notes:		For large corporations, hospitals or colleges, a frame video capture card and high-end digital camera is recommended on a badging station. Depending on the amount of photo's needed to be taken per-day on a Badging station; or for other functions the number of DVRs/NVRs or Napco Panels Integrated; or the number of Scripts or Dynamic Maps running additional RAM may be required.	

Scope

This document contains information regarding the upgrade to a CA3000 V2.7.x from V2.6.x and a earlier version of V2.7.x. It is to be used for a workstation upgrade. If Badging3000 (EPI) is currently installed and licensed on the computer you are upgrading, do not revoke the EPI licenses and do not remove the badging3000 software.

InstallShield Wizard

If auto start is enabled on your system, the **CardAccess3000 Version 2.7 Setup** screen will display after inserting the CA3000 CD in the CD-ROM drive (Refer to Figure 2). If Figure 2 displays, skip ahead to the steps following Figure 2. If nothing happens after inserting the CA3000 CD in the CD-ROM, continue with the next steps.

Note: If auto start is not enabled on your system, follow the steps below to execute the program.

- a. Click the **Start** menu on your PC, and then click on the **Run** menu option. You will see the 'Run' dialog box.
- b. In the 'Run' dialog box, click the white space of the **open** control, and type in **D:\bin\Launch.exe** (Refer to Figure 1).

Note: D represents CD-ROM drive letter. This letter will be different depending on the drive letter of your CD-ROM.

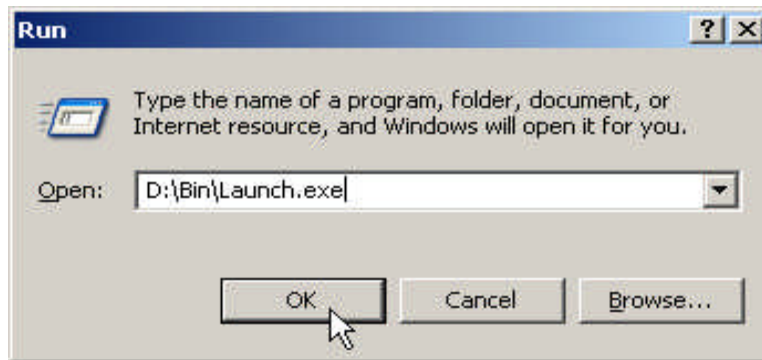


Figure 1.

Click on **OK** in the 'Run' dialog. The **CardAccess3000 Version 2.7 setup** screen will display (Refer to Figure 2).



Figure 2.

Note: If the following applications are already on the computer, some of the steps will be skipped.

Click on the **Install CardAccess 3000** button. Click **Next**. The **Pending DVR Prerequisites** screen will display (Refer to Figure 3).

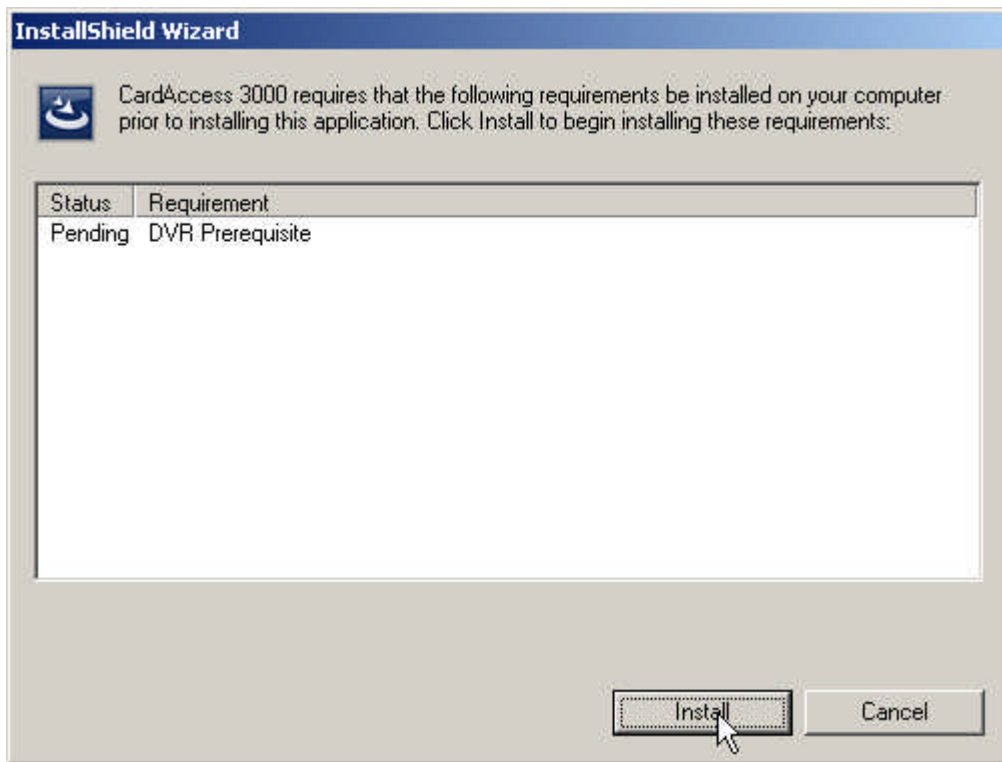


Figure 3.

Click on **Install**. The **Installing DVR Prerequisites** screen will display if it's not currently installed on the computer (Refer to figure 4).

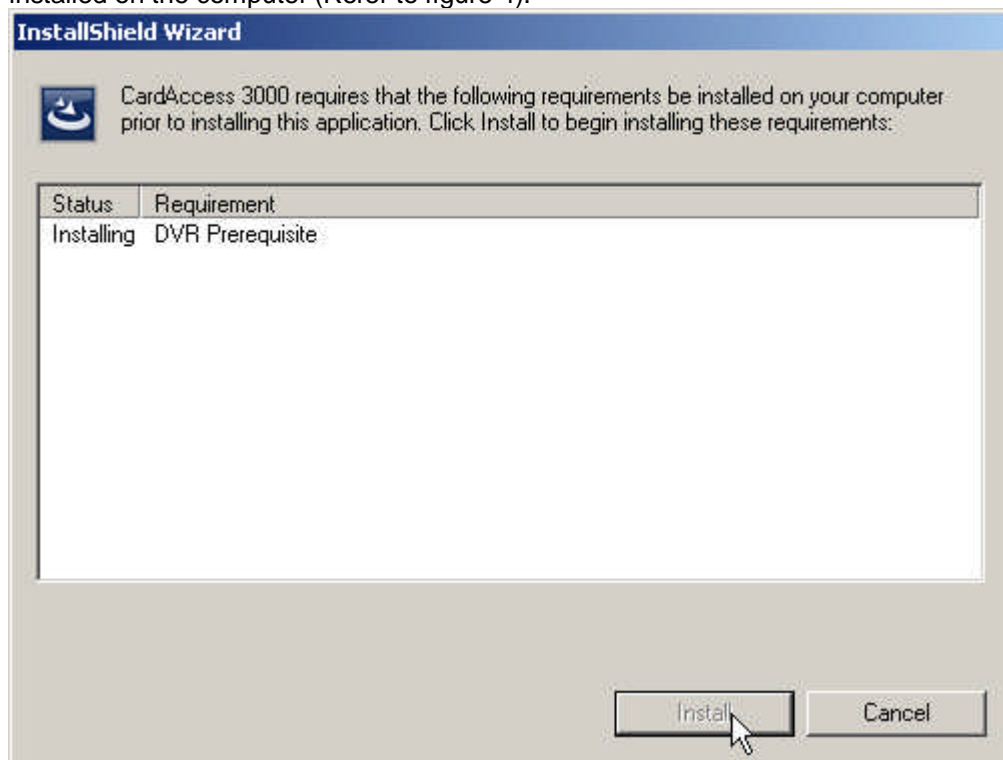


Figure 4.

During the installation of the DVR Prerequisites, a screen will display referencing installation of the VC++ redistributable files if these files are not already on the computer. You will be prompted to click **INSTALL** or **CANCEL**. Click Install.

Microsoft .NET Framework Installation

The installation of CA3000 V2.7.x requires Microsoft .NET Framework 3.5. If this is not currently installed, the CA3000 installation process will install it (Refer to figure 5). If this is already installed on the computer, the installation process will skip to the **CardAccess3000 Upgrade**.

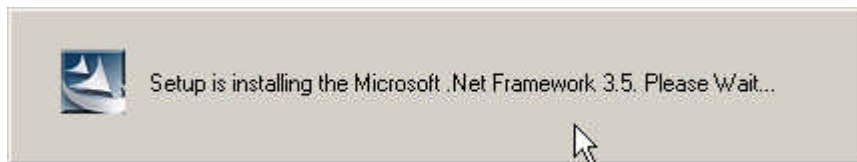


Figure 5.

NOTE: BE PATIENT...THIS WILL TAKE A FEW MINUTES.

CardAccess 3000 Upgrade

NOTE: Unlike any other versions, the V2.7. upgrade will automatically detect a previous version of CA3000 and uninstall it before installing the CA3000 V2.7.x.

The CardAccess 3000 **InstallShield Wizard** screen will display "Setup has detected a previous version CardAccess 3000 and setup will Uninstall before installing CardAccess 3000 2.7 version" (Refer to figure 6).

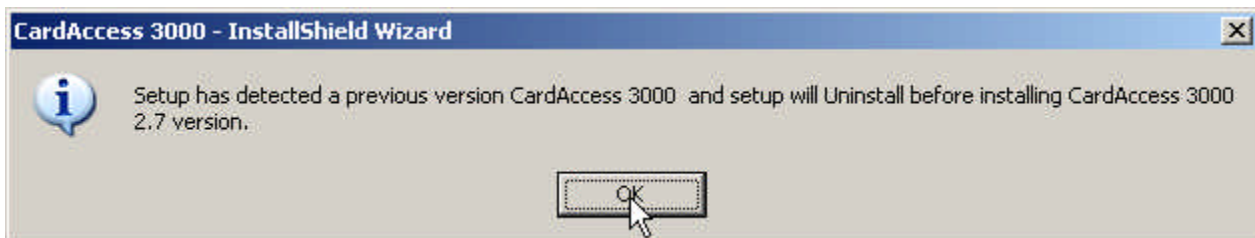


Figure 6.

Click **OK**. The **Setup is Uninstalling CardAccess 3000 V2.6 version** screen will display (Refer to Figure 7).

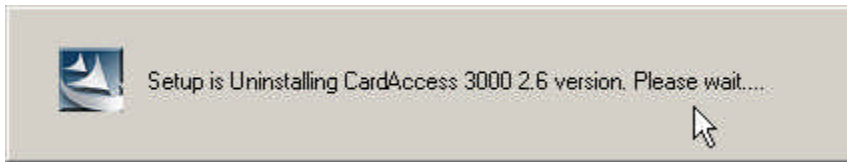


Figure 7.

After the uninstall is complete, the **ADH Source Filter for Direct Show Setup Wizard** screen will display (Refer to figure 8).



Figure 8.

Click **Next**. The **ADH Source Filter for Direct Show Select Installation Folder** screen will display (Refer to figure 9).

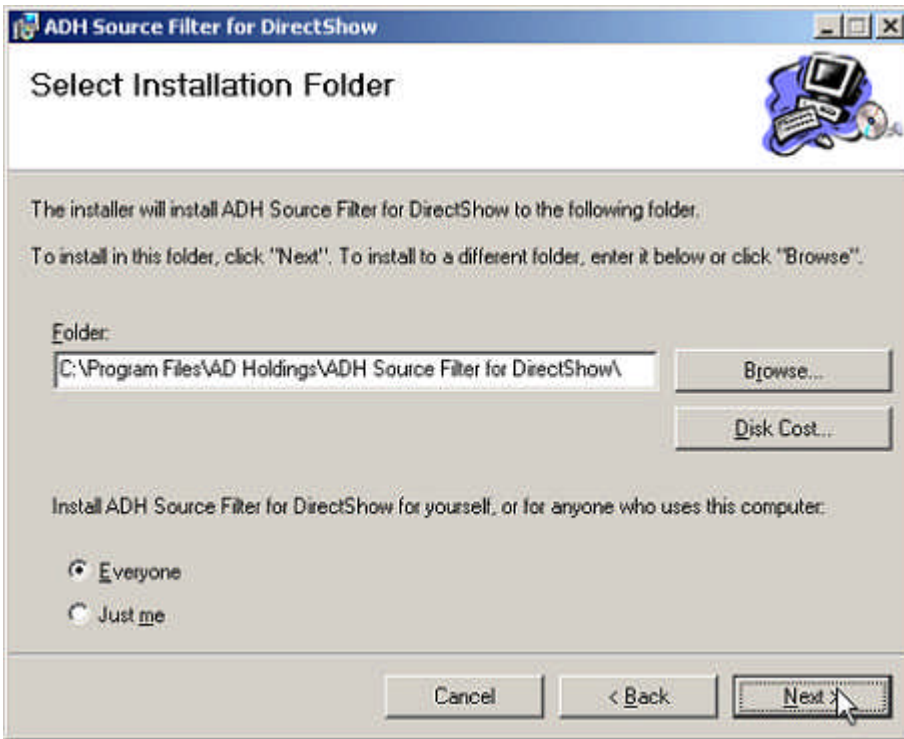


Figure 9.
Click **Next**. The **ADH Source Filter for Direct Show Confirm Installation Folder** screen will display (Refer to figure 10).

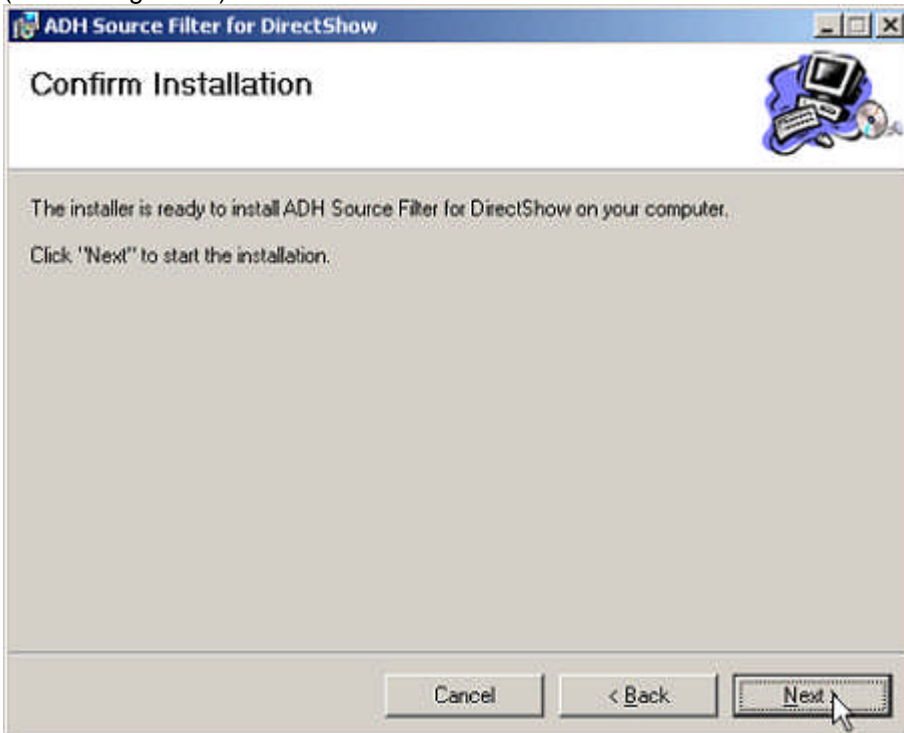


Figure 10.
Click **Close**. The **ADH Source Filter for Direct Show Installation Complete** screen will display after the installation is finished (Refer to figure 11).

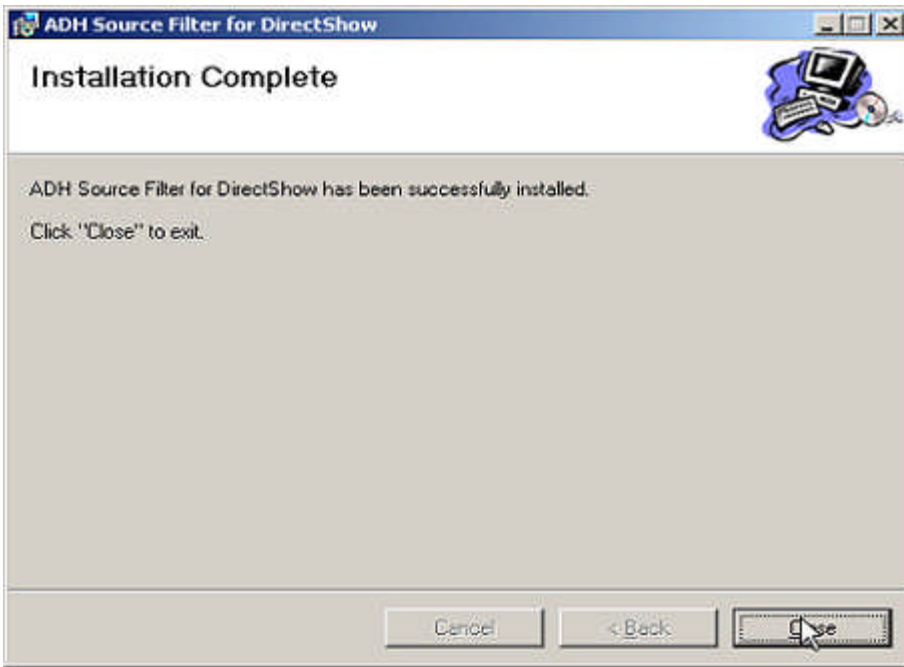


Figure 11.
Click **Close**. At the completion of the **ADH Source Filter for Direct Show** installation, the **Welcome to CardAccess 3000 Setup** program screen will display (Refer to figure 12).

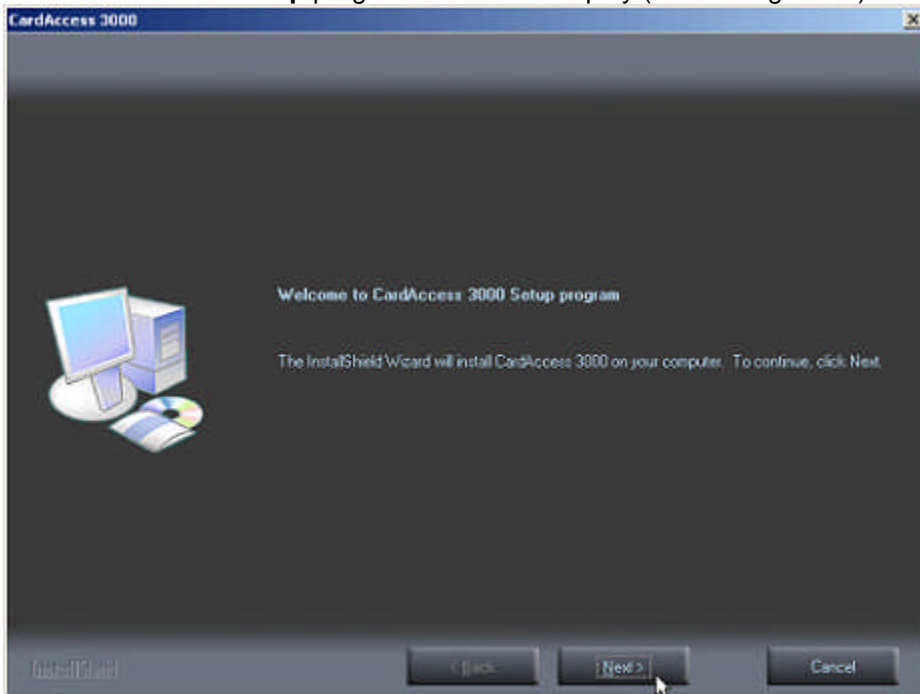


Figure 12.
Click **Next**. The **Setup Type** screen will display (Refer to Figure 13).

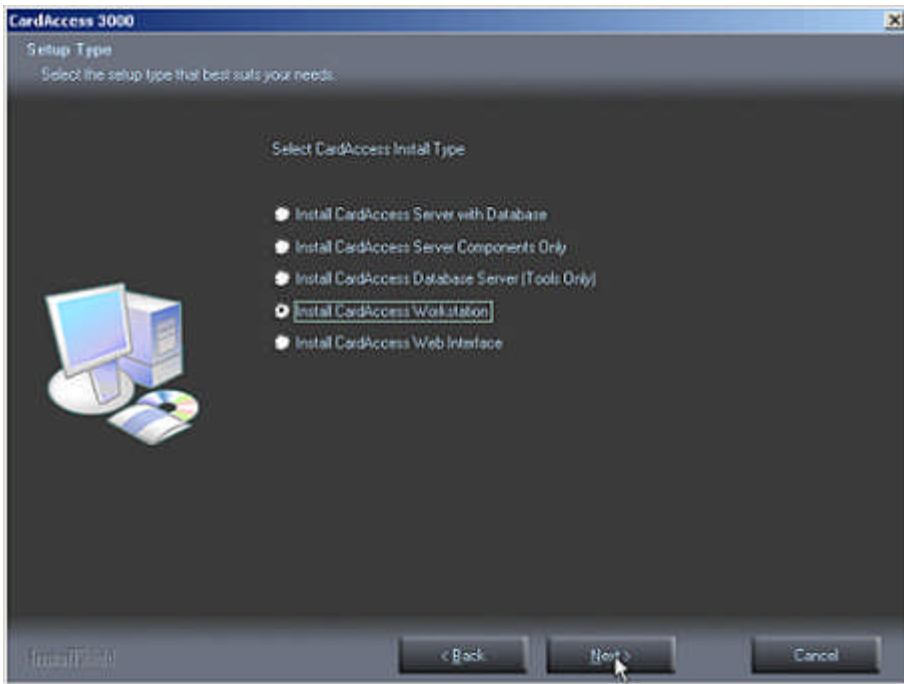


Figure 13.
Click **Next**. The **Select CardAccess Destination Folder** screen will display (Refer to figure 14).

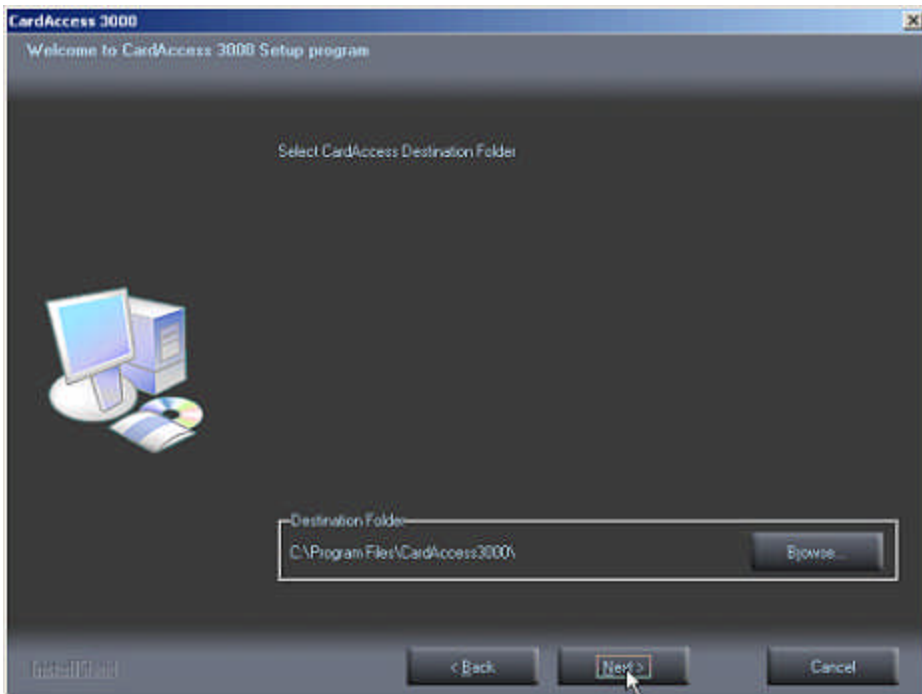


Figure 14.
Click **Next**. The **Select Additional CardAccess Components to be installed** screen will display (Refer to figure 15).

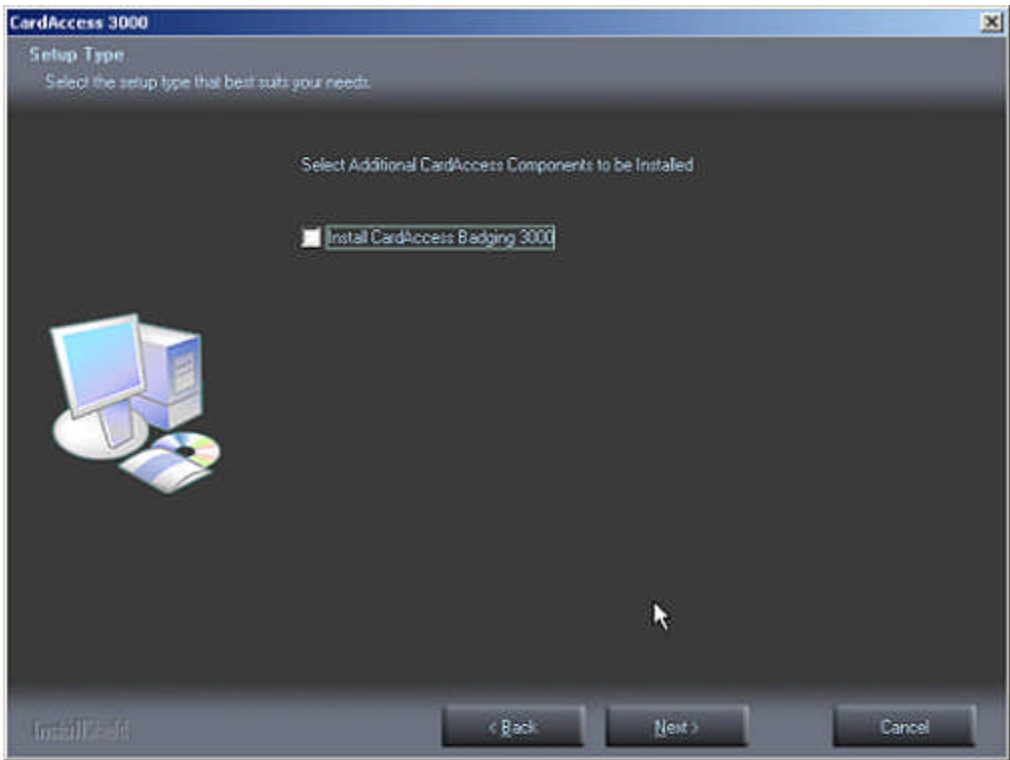


Figure 15.
Click **Next**. Note: If Badging 3000 is already installed, do not select to install again.

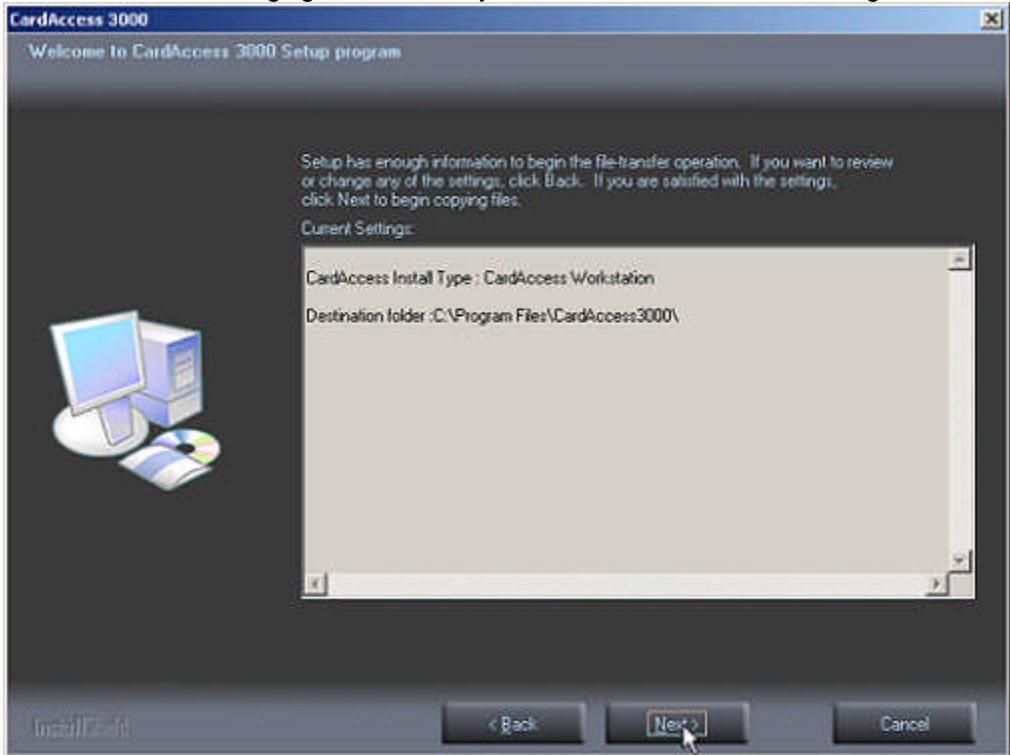


Figure 16.
.Click **Next**. A progress bar will display while the CardAccess 3000 is installing (Refer to figure 17).

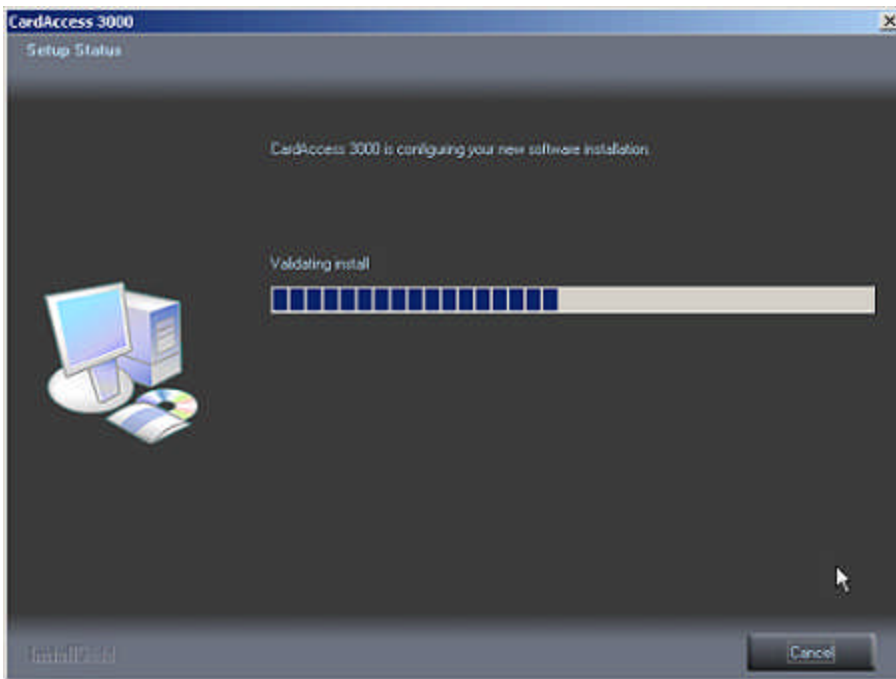


Figure 17.
After the completion of the CardAccess 3000 installation, SQL Express updates will occur if needed.

SQL Express 2005 Installation

Note: The following steps will not occur if SQL 2005 already exists and nothing needs to be updated.

The SQL 2005 installation will automatically begin. The **Microsoft SQL Server 2005 Setup** screens will display (Refer to Figures 18, 19, 20 and 21).

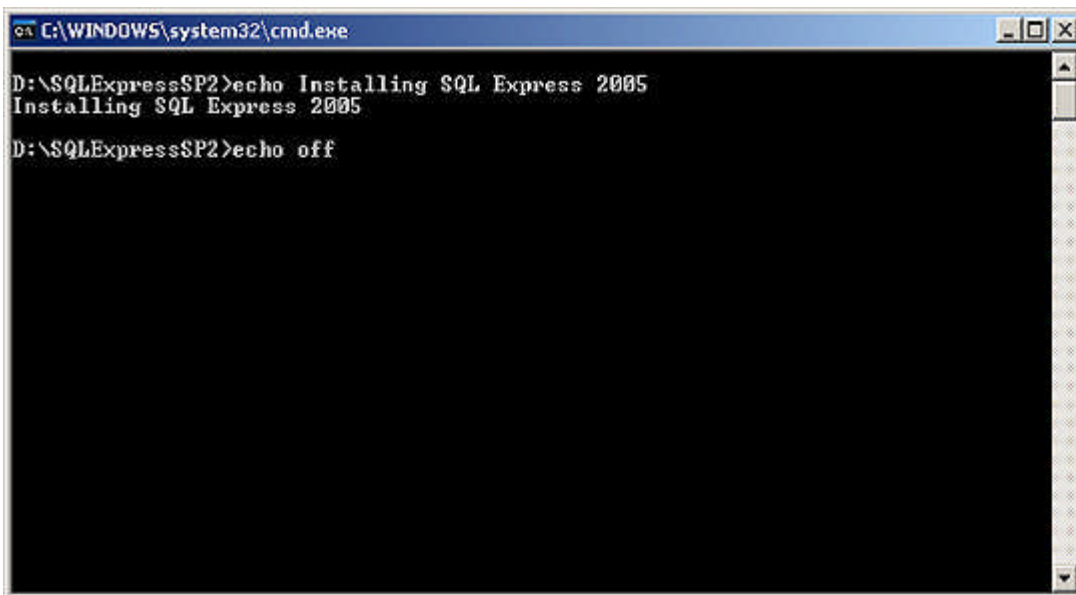


Figure 18.

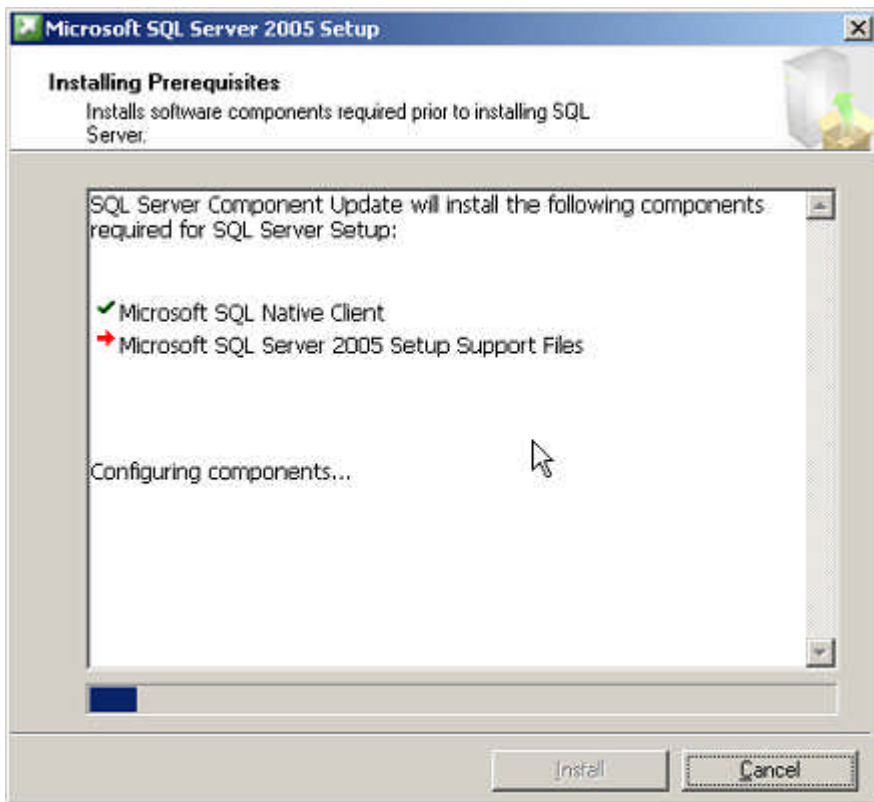


Figure 19.

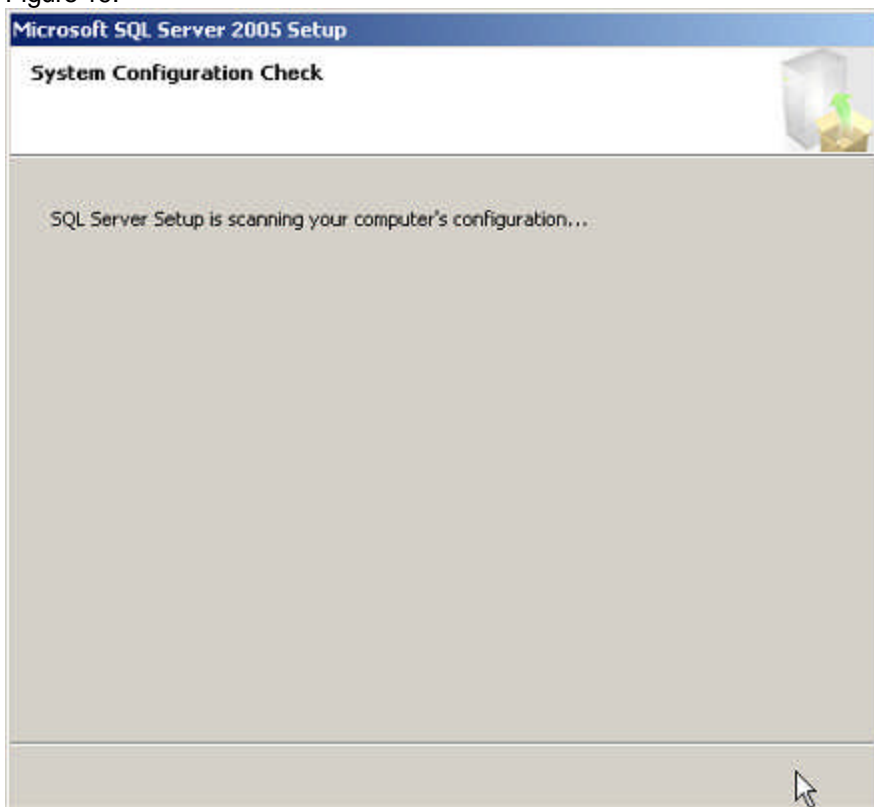


Figure 20.

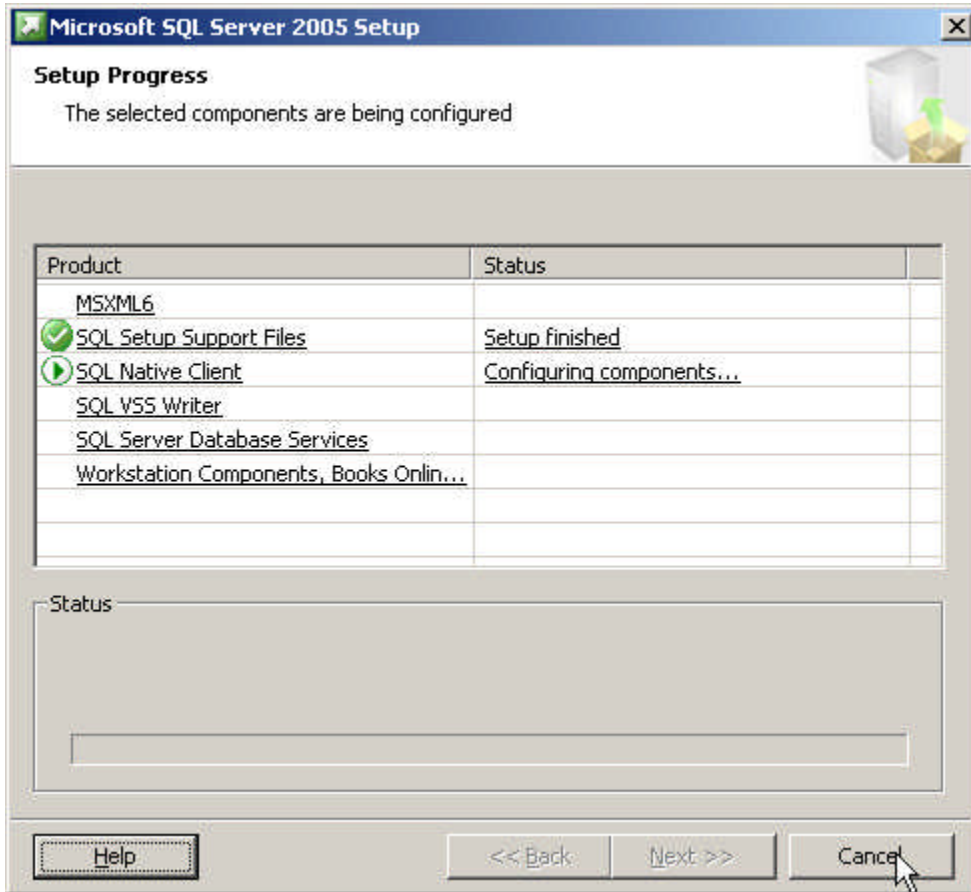


Figure 21.

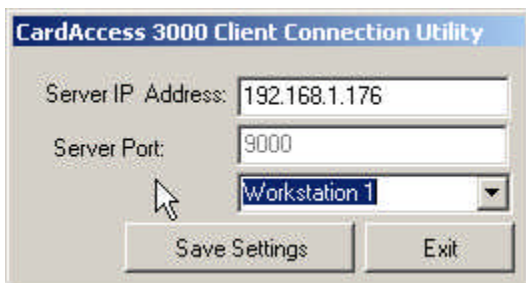


Figure 22.

Enter the **Server IP Address** (This is the IP address of the CardAccess 3000 Server/Host). The **Server Port** setting should be 9000 by default. Next, select a unique workstation number. Click **Save Settings**. A **Settings saved successfully** dialog box will display (Refer to figure 23).



Figure 23.

The CardAccess 3000 upgrade is now complete.