

Continental Access

A Napco Security Group Company



V2.7.x Installation on a Workstation Procedure

Note: This document is to be used on a new workstation install.

Revision D

Date: 12/13/2010

CardAccess® 3000 



CA3000 Software Installation Procedure

Continental Access and CardAccess3000 are registered trademarks of Napco Security Group
Microsoft® is a registered trademark of Microsoft Corporation.
Windows® is a registered trademark of Microsoft Corporation.
CardAccess® is a registered trademark of Napco Security Group

Document Title V 2..7.x Installation on a Workstation

This document contains proprietary information of Continental Access. Unauthorized reproduction of any portion of this manual without the written authorization of Continental Access is prohibited. The information in this manual is for informational purposes only. It is subject to change without notice. Companies, names and data used in examples herein are fictitious unless otherwise noted. Continental assumes no responsibility for incorrect information this manual may contain.

Continental Access
355 Bayview Dr.
Amityville, NY 11701
Phone (631) 842-9400
Fax (631) 842-9135

Web: <http://www.cicaccess.com>

License Agreement

NOTICE TO USER: THIS PACKAGE IS A CONTRACT. BY OPENING THIS SEALED PACKAGE YOU ACCEPT ALL THE TERMS AND CONDITIONS OF THIS AGREEMENT.

Use of this Software. You may install and use the software only for the purpose intended.

Copyright. You may not duplicate or copy the software or documentation, except that you may make one backup copy of the software. All copies must bear copyright notices contained in the original copy.

Limited Warranty. Continental Access warrants that the software will perform substantially in accordance with the printed documentation when correctly installed on a properly configured computer for which it is intended. Continental Access warrants the discs upon which this product is recorded to be free from defects in materials and workmanship under normal use for a period of 1 year from the date of purchase. During the warranty period Continental Access will replace discs, which prove to be defective.

Important Information - Must be read before installing software.

- 1) This document covers CardAccess 3000 V2.7 B223 and all later versions of V2.7.x.
- 2) The version 2.7.x Workstation installation is accomplished using 1 CD (DISK 1). There is no (DISK 2) as in previous versions.
- 3) The installation of a CA3000 Workstation requires a valid V2.7 security key/license on the CA3000 Server/Host. The security key/ license must support 5 or more workstations. If your security key displays “max workstations =1”, no workstations or web clients are supported.
- 4) During the installation of a workstation, you will be prompted to enter the IP address of the CA3000 Server/Host into the client connection utility. Before starting this installation, verify the IP address of the CA3000 host and have it available to enter.
- 5) The workstation you are installing communicates to the CA3000 Server/Host via a network. It is very important to turn off all firewalls on the CA3000 Workstation and the CA3000 Host. To assure proper communications to the CA3000 Server, from the Workstation, you must be able to ping the CA3000 Server from the CA3000 Workstation. You must be able to ping it by IP address and Host name. If unable to ping by IP and hostname, the CA3000 Workstation will not communicate properly with the host.
- 6) If upgrading from a version 2.5.16 or earlier of CA3000, you must uninstall all components of CA3000 and SQL 2000 prior to installing this software. After everything is removed, you would treat this like a new install.
- 7) If you select to install the Badging3000, you must purchase the EPI Badging3000 licenses from Continental Access. You will be issued two licenses (Designer and Runtime). You must have these license numbers to activate the software.

CA3000 v2.7 Workstation PC Recommendations

	Workstation-Event Viewing Only	Workstation-Event Viewing + any one Integration feature (Badging, DVR/NVR, Napco, Scripting, or Dynamic Maps)	Workstation-Event Viewing + any two Integration features (Badging, DVR/NVR, Napco, Scripting, or Dynamic Maps)
Processor	Pentium Core2 Duo, 2.2GHz min	Pentium Core2 Duo, 2.6MHz min	Dual Pentium Core2 Duo, Pentium Quad Core or Pentium Xeon
Ram	1 GB Min	2 GB Min	3 GB Min
Hard Drive	80 GB min	160 GB min	250 GB min
USB Ports	2	4	4
Serial Ports	N/A	N/A	N/A
Parallel Ports	1	1	1
Mouse	PS2 or USB	PS2 or USB	PS2 or USB
Monitor	17" (1024 x 768) min	17" (1024 x 768) min	17" (1024 x 768) min
CD/DVDROM	48x/16x	48x/16x	48x/16x
CDRW/DVDR	24x/4x Optional	24x/4x Optional	24x/4x Optional
Sound	Recommended	Recommended	Recommended
Network Card	100 NIC Ethernet minimum	100/1000 NIC Ethernet	100/1000 NIC Ethernet
Operating System	Win XP Pro w/SP3, Win 2003 32 bit, Win 7 Pro 32 bit. Note: 64 bit not supported	Win XP Pro w/SP3, Win 2003 32 bit, or Win 2008 32 bit. Note: 64 bit not supported	Win XP Pro w/SP3, Win 2003 32 bit, or Win 2008 32 bit. Note: 64 bit not supported
Database	N/A	N/A	N/A
Backup	N/A	N/A	N/A
Notes:		For large corporations, hospitals or colleges, a frame video capture card and high-end digital camera is recommended on a badging station. Depending on the amount of photo's needed to be taken per-day on a Badging station; or for other functions the number of DVRs/NVRs or Napco Panels Integrated; or the number of Scripts or Dynamic Maps running additional RAM may be required.	

Scope

This document contains information regarding the installation of a CA3000 V2.7.x Workstation. This procedure includes the installation of the EPI Badging3000. It is recommended to install the Badging3000 on a workstation. If you choose not to install the Badging3000 during this install, some of the following steps/screens will be different.

InstallShield Wizard

If auto start is enabled on your system, the **CardAccess 3000 Version 2.7 Setup** screen will display after inserting the CA3000 CD in the CD-ROM drive (Refer to Figure 2). If Figure 2 displays, skip ahead to the steps following Figure 2. If nothing happens after inserting the CA3000 CD in the CD-ROM, continue with the next steps.

Note: If auto start is not enabled on your system, follow the steps below to execute the program.

- a. Click the **Start** menu on your PC, and then click on the **Run** menu option. You will see the 'Run' dialog box.
- b. In the 'Run' dialog box, click the white space of the **open** control, and type in **d:\launch.exe** (Refer to Figure 1).

Note: D represents CD-ROM drive letter. This letter will be different depending on the drive letter of your CD-ROM.

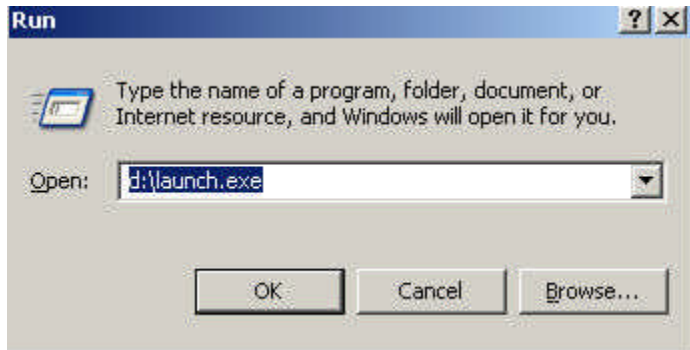


Figure 1.

Click on **OK** in the 'Run' dialog.

The **CardAccess 3000 Version 2.7 setup** screen will display (Refer to Figure 2).



Figure 2.

Click on the **Install CardAccess 3000** button. Click **Next**. The Pending DVR Prerequisites screen will display (Refer to Figure 3).

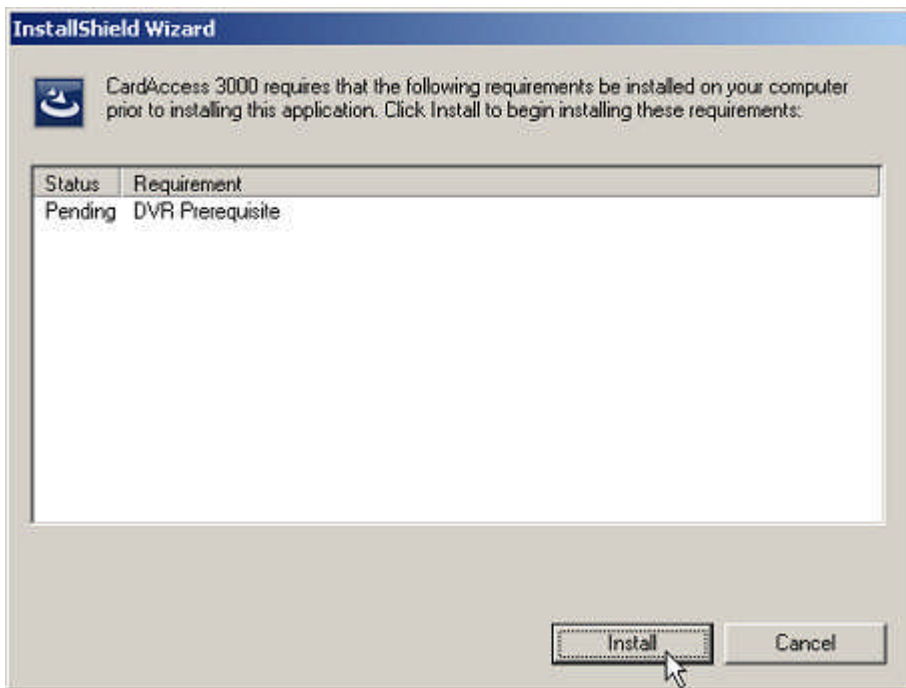


Figure 3.

Click on **Install**. The **Installing DVR Prerequisites** screen will display (Refer to figure 4).

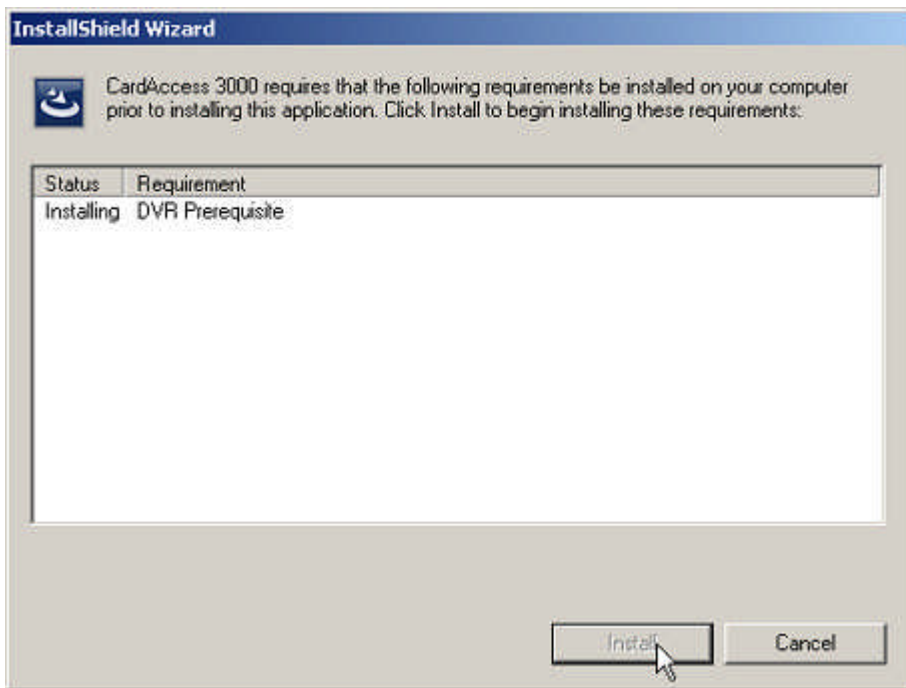


Figure 4.

Microsoft .NET Framework Installation

The installation of CardAccess3000 requires **Microsoft .NET Framework 3.5**. If this is not currently installed, the CA3000 installation process will install it (Refer to Figure 5). If this is already installed on the computer, the installation process will skip to the next step.

NOTE: Be patient... This installation process will take a few minutes.

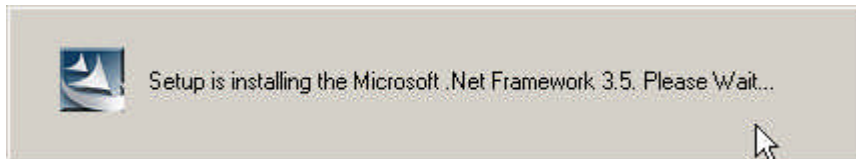


Figure 5.

At the completion of the .Net Framework 3.5, the **ADH Source Filter for Direct Show Setup Wizard** screen will display (Refer to Figure 6).

Note: You might be prompted to install VC++ redistributable files if these files are not already installed on the computer. If so, you will be prompted to **INSTALL** or **CANCEL**. **Click INSTALL.**



Figure 6.

Click **Next**. The **ADH Source Filter for Direct Show Select Installation Folder** screen will display (Refer to figure 7).

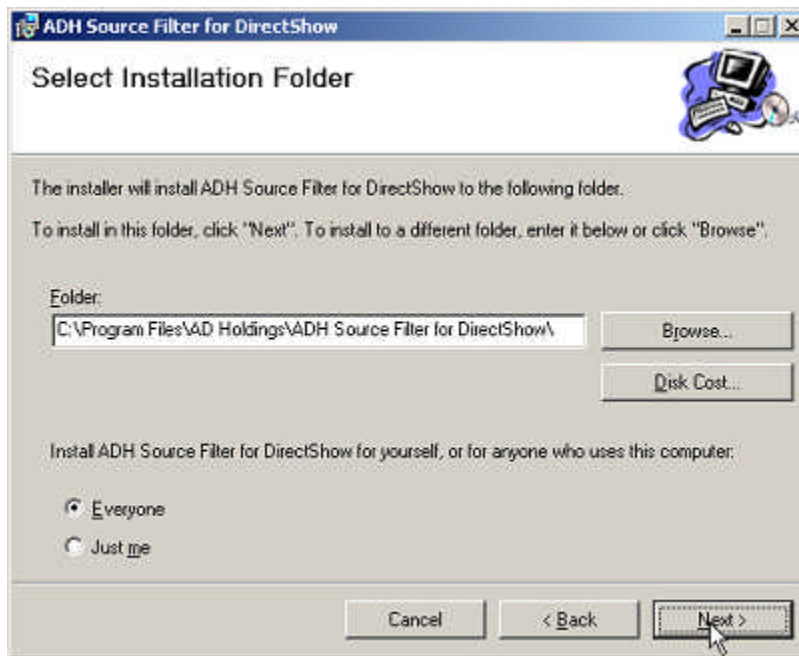


Figure 7.
Click **Next**. The **ADH Source Filter for Direct Show Confirm Installation** screen will display (Refer to figure 8).

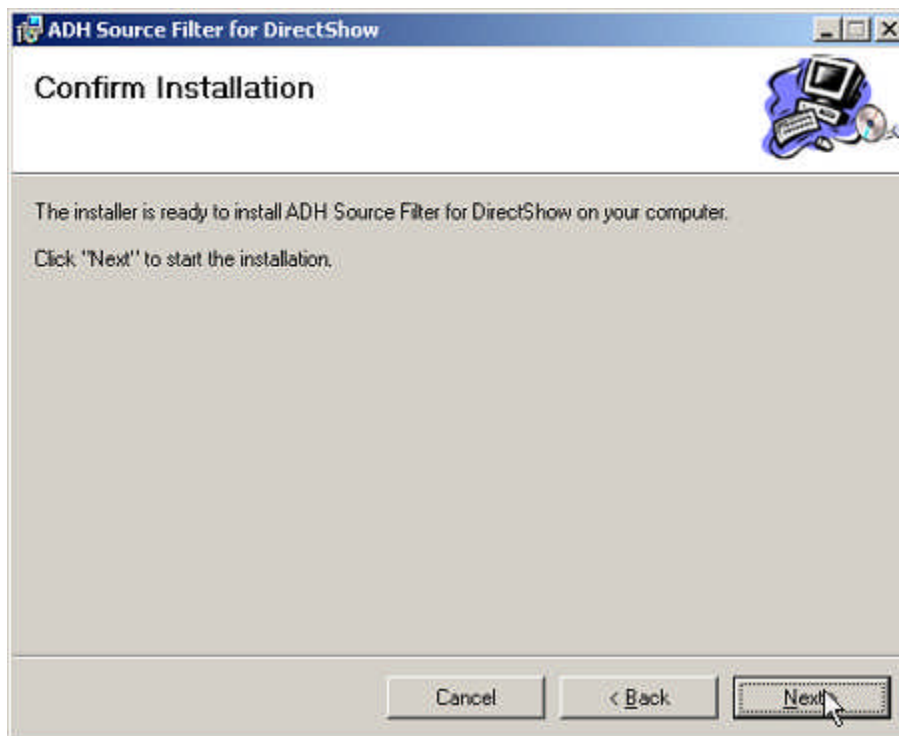


Figure 8.
Click **Next**. After the installation is complete, the **ADH Source Filter for Direct Show Installation Complete** screen will display (Refer to figure 9).

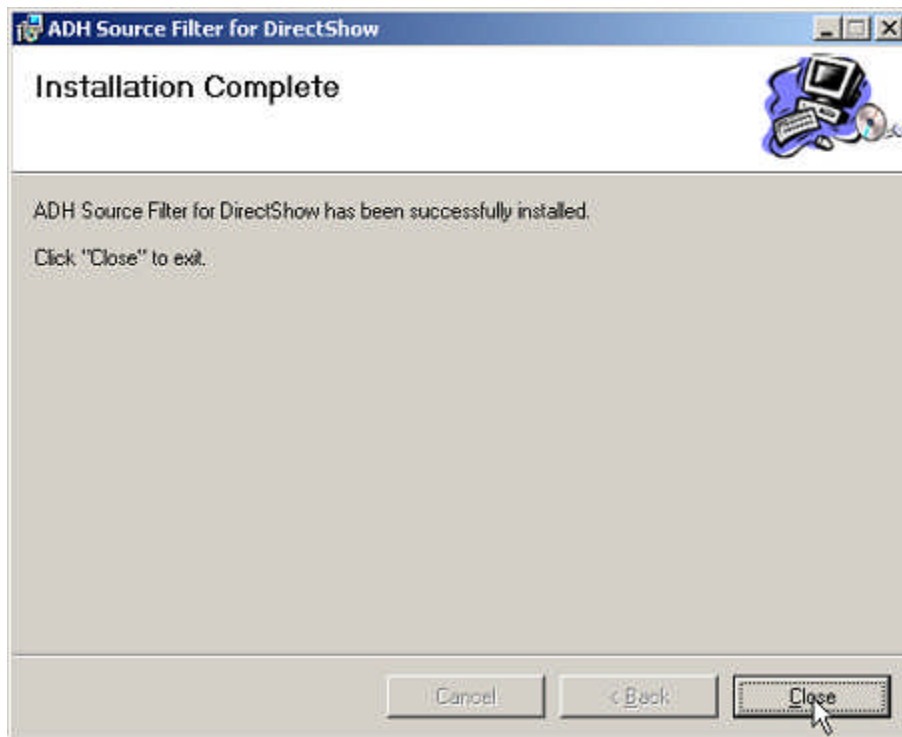


Figure 9.

Click **Close**.

At the completion of the **ADH Source Filter for Direct Show** the CardAccess 3000 setup will begin.

CardAccess 3000 Setup

After the completion of the CardAccess 3000 InstallShield wizard, the **Welcome to CardAccess 3000 setup program** screen displays (Refer to Figure 10).

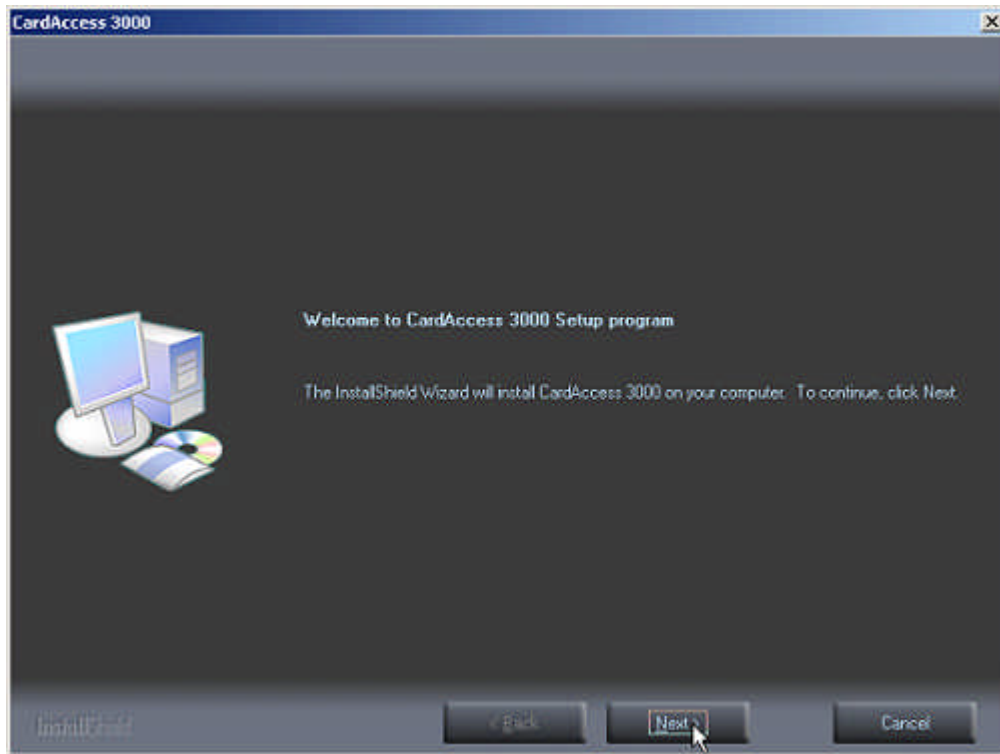


Figure 10.

Click **Next**. The **Select CardAccess Server Type** screen will display (Refer to Figure 11).

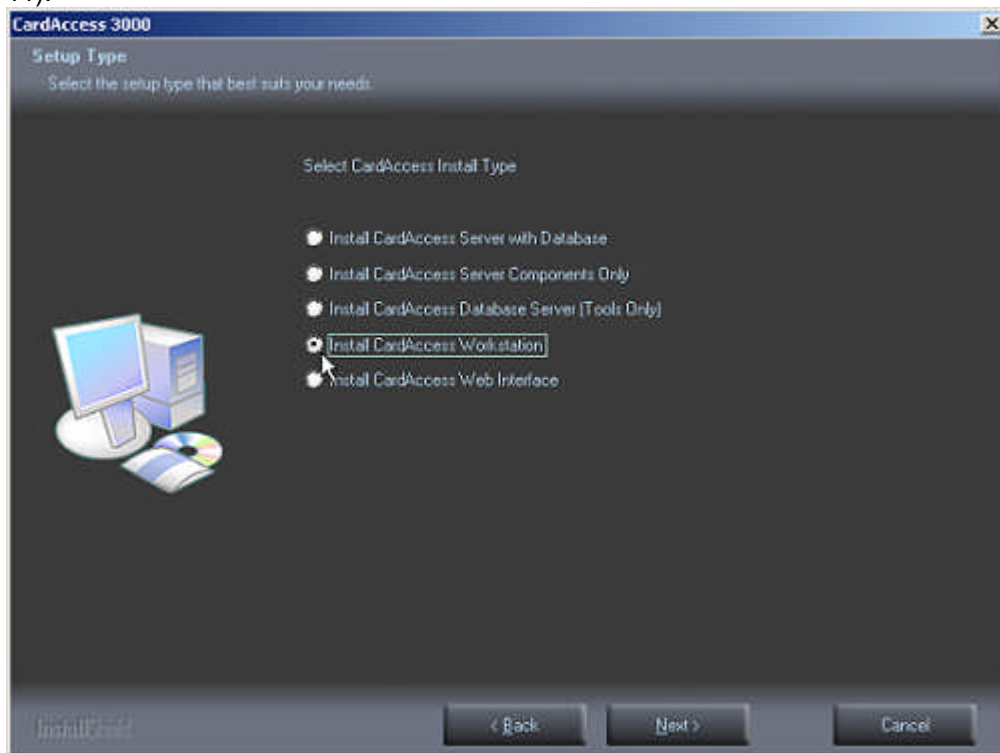


Figure 11.

Click the **Install CardAccess Workstation** option. Click **Next**. The **Select CardAccess Destination Folder** screen will display (Refer to Figure 12).

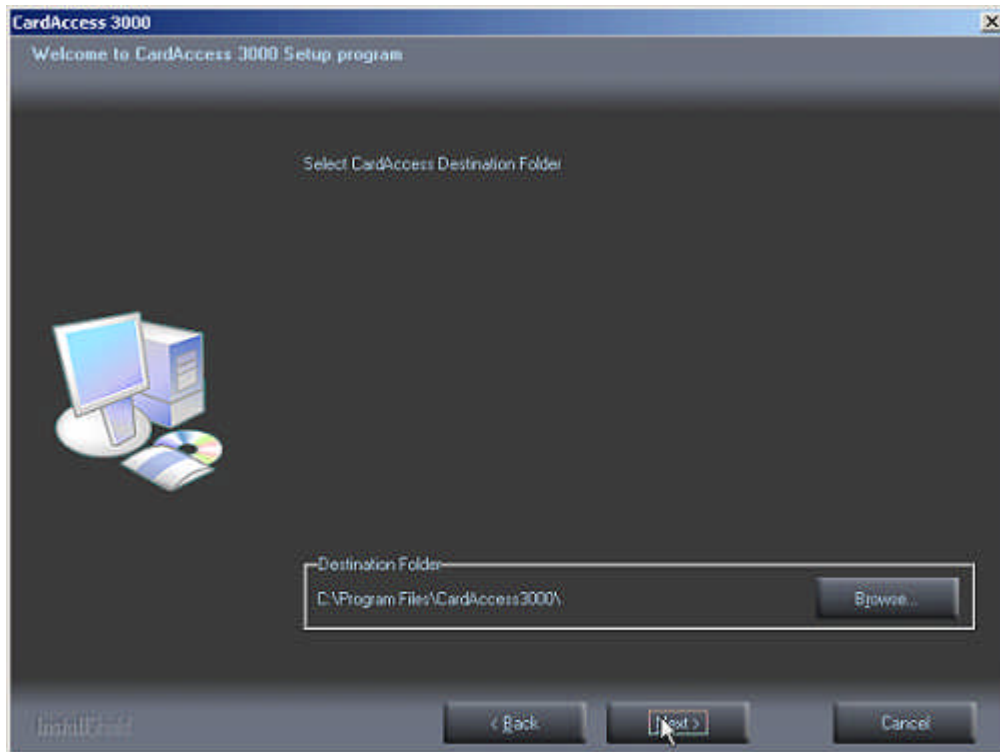


Figure 12.

The default path will display. If you are installing CardAccess 3000 to a different path, click the **Browse** button and select the path.

NOTE: CardAccess 3000 must be installed under a Program Files folder. It is highly recommended to use the default path.

Click **Next**. The **Select Additional CardAccess components** screen will display (Refer to Figure 13).

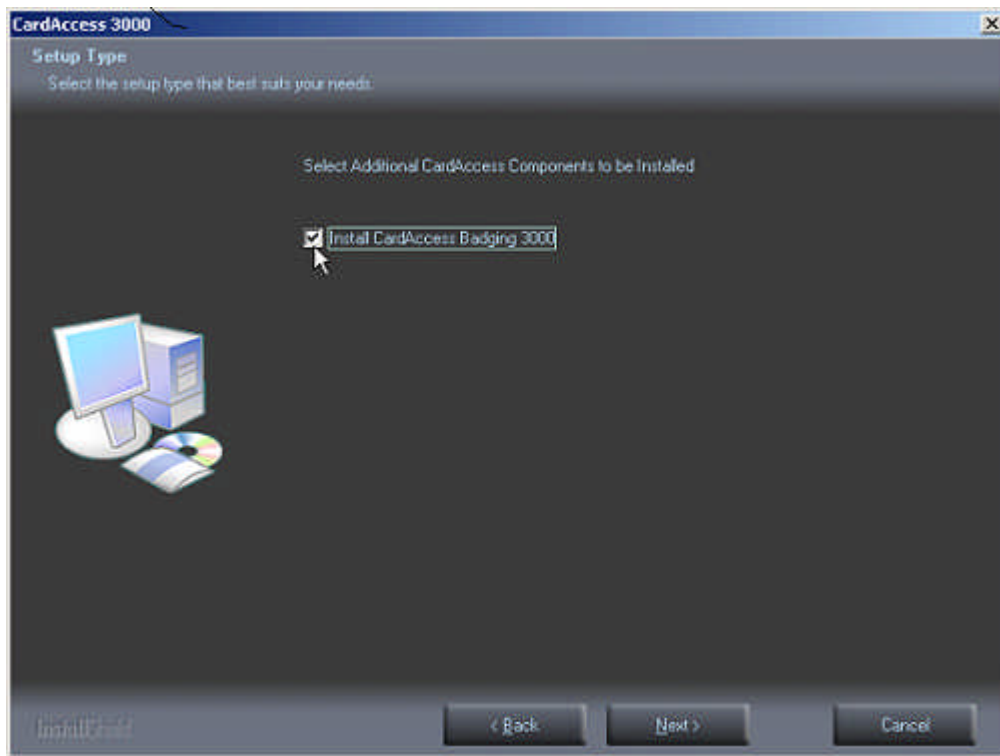


Figure 13.

Select the **Install CardAccess Badging 3000** checkmark.

NOTE: If you didn't purchase the Badging 3000 licenses, it is OK to install the Badging 3000 software now. You will not be able to activate the Badging 3000 software unless you purchase the two EPI licenses at a later date.

NOTE: If you choose not to install the Badging 3000, do not select the **Install CardAccess Badging 3000** checkmark (Note: Some of the following screens will not display if you do not install the Badging 3000).

Click **Next**. The **Current Settings** screen will display (Refer to Figure 14).

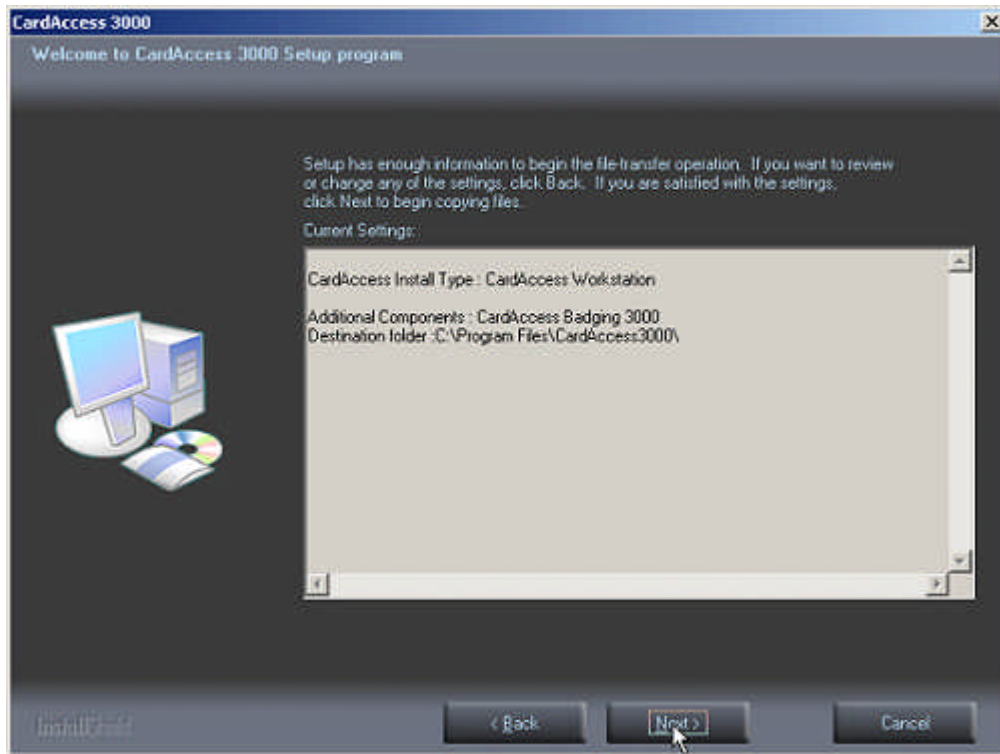


Figure 14.

After reviewing the current settings, click **Next**. A progress bar will display while CardAccess 3000 is installing (Refer to Figure 15).

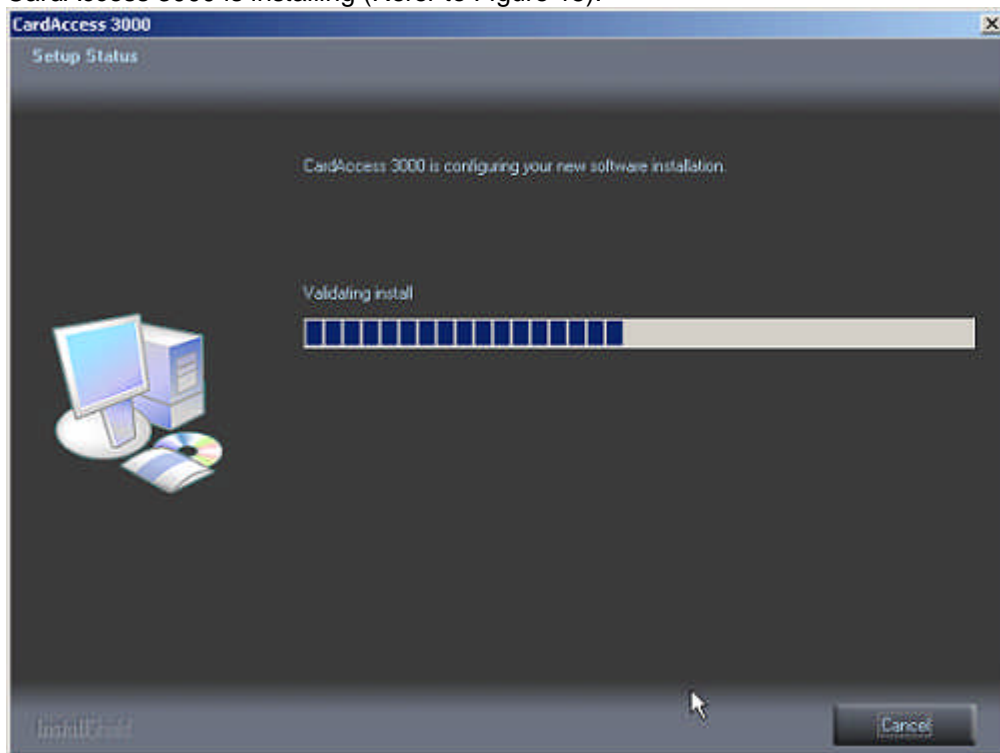


Figure 15.

After the completion of the CardAccess 3000 installation, they **Would you like to Install Badging 3000?** screen will display (Refer to Figure 16).

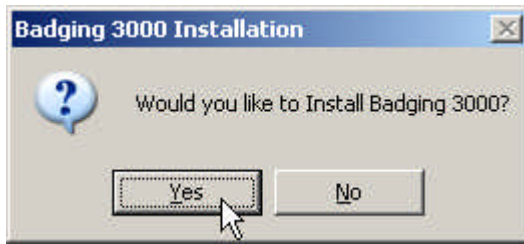


Figure 16.

Click **Yes**. The **Badging 3000 will be installed after your computer reboots, Please leave the CardAccess CD in the CD tray** screen will display (Refer to Figure 17).

NOTE: This is only a message advising to leave the CD in at the end of the installation while the computer reboots. The Badging 3000 will install after the computer reboots.

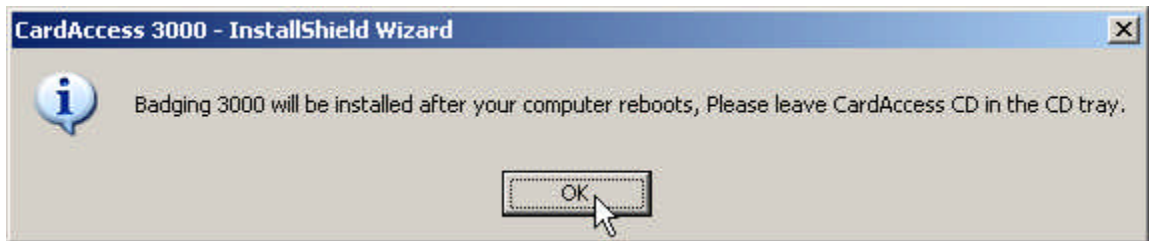


Figure 17.

Click **OK**. The SQL 2005 Client components will install.

SQL 2005 Client Tools Installation

The SQLEXPRESS 2005 Client Components installation will begin (Refer to Figure 18). During the installation of SQL Express 2005 Client Components, multiple setup screens will display (Refer to Figure 18, 19, 20 and 21).

NOTE: Be patient... This installation process will take a few minutes.

WARNING: If a previous version of SQL is detected, a "Warning" message will display. If this occurs, you should uninstall any previous versions of SQL.

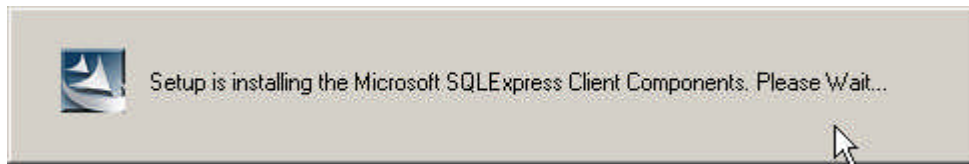


Figure 18.

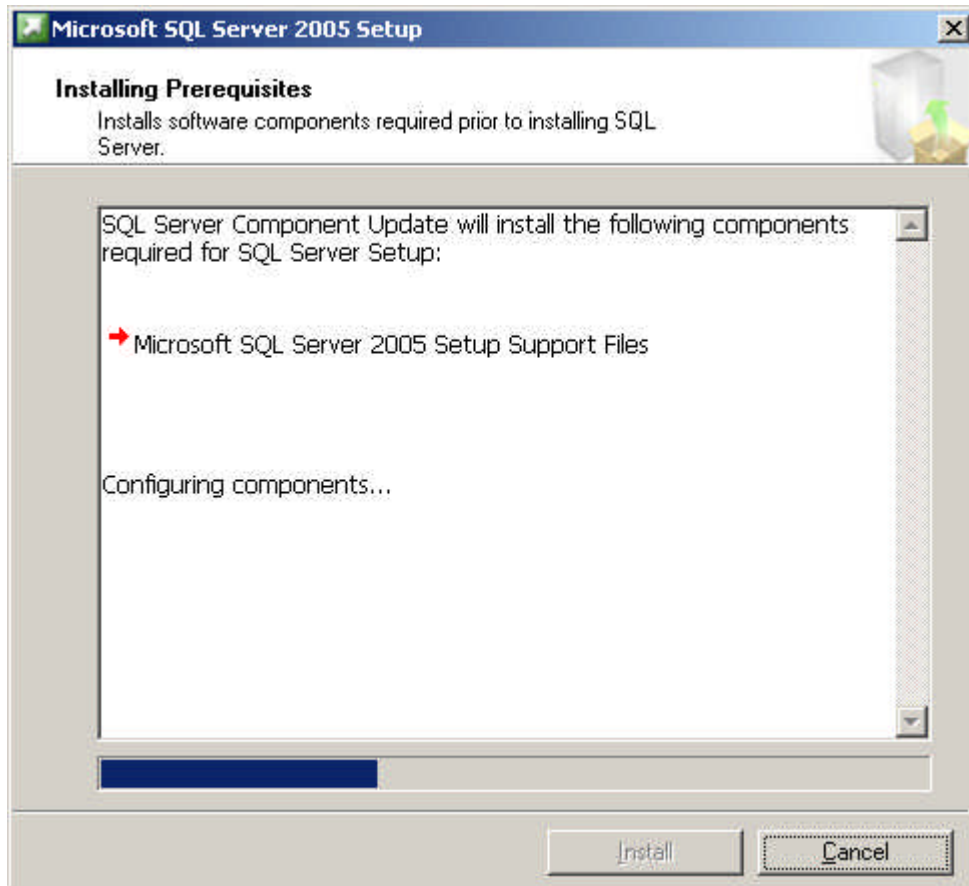


Figure 19.

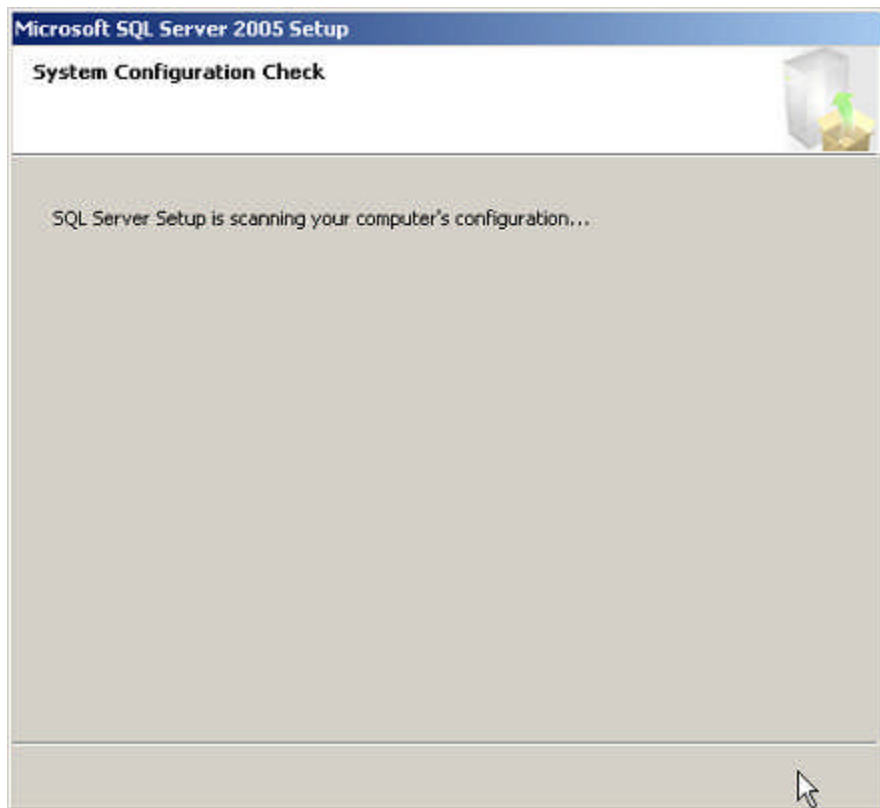


Figure 20.

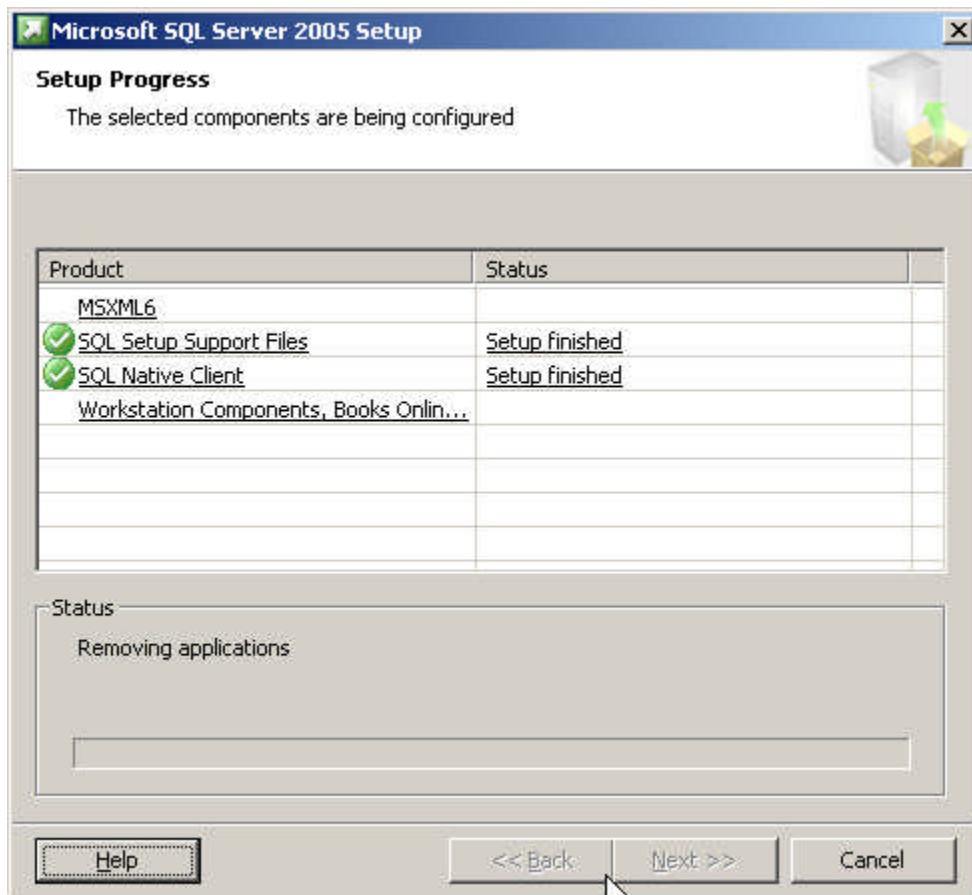


Figure 21.

At the completion of the SQL Express 2005 client tools installation, the **CardAccess 3000 Client Connection Utility** screen will display (Refer to Figure 22).

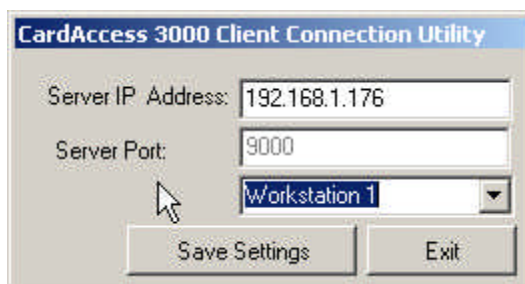


Figure 22.

Enter the **Server IP Address** (This is the IP address of the CardAccess 3000 Server/Host). The Server Port setting should be 9000 by default. Next, select a unique workstation number. Click **Save Settings**. The **Settings saved successfully** dialog box will display (Refer to Figure 23).



Figure 23.

Click **OK** to close the dialog box in Figure 19. Click **Exit** to close the CardAccess 3000 Client Connection Utility screen. The Readme Information screen will display (Refer to Figure 24).

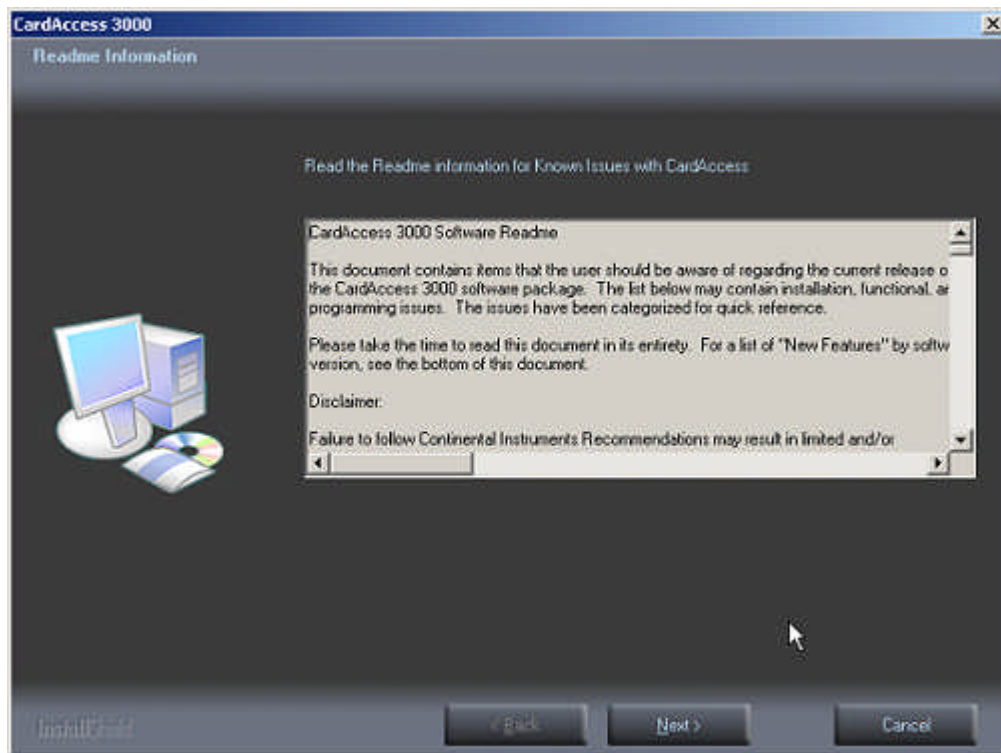


Figure 24.

After reviewing the Readme Information, Click **Next**. The **InstallShield Wizard Complete screen** will display (Refer to Figure 25).

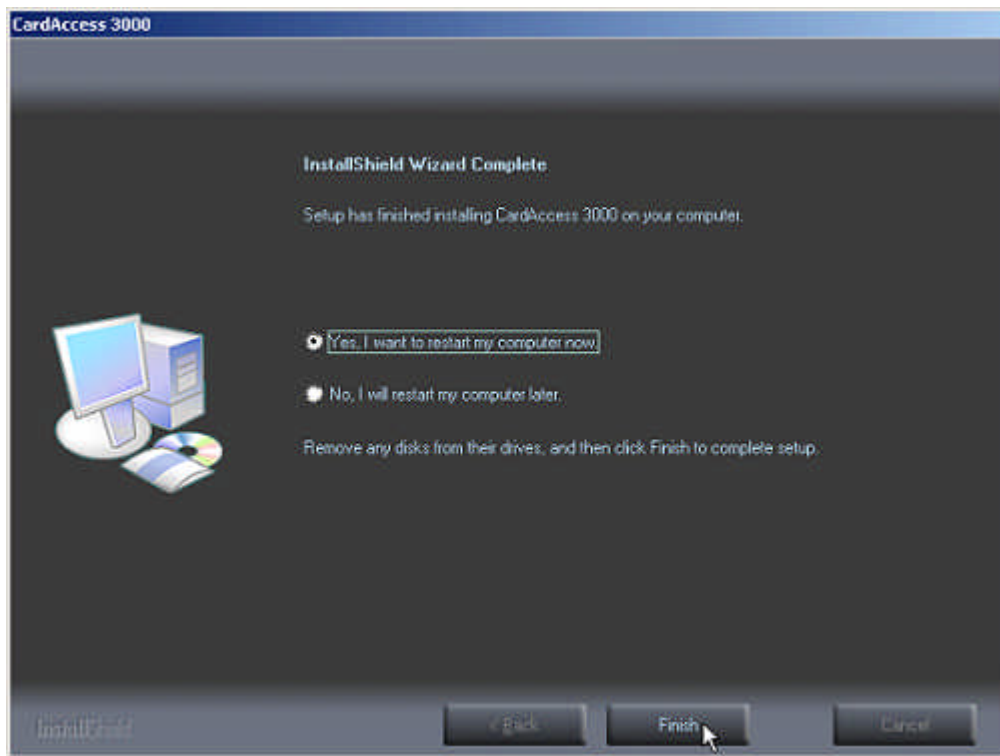


Figure 25.

Verify the **Yes, I want to restart my computer now** option is selected. This should be selected by default.

VERY IMPORTANT: If you selected to install Badging 3000, the installation will begin after the computer restarts. Leave the CD in the CD tray.

Click **Finish**. The computer will restart.

If you didn't select to install the Badging3000, the installation is complete after the computer reboots. If you are installing Badging3000, the **Welcome to the InstallShield Wizard for EPI Builder Run-Time 6** screen will display (Refer to Figure 26).

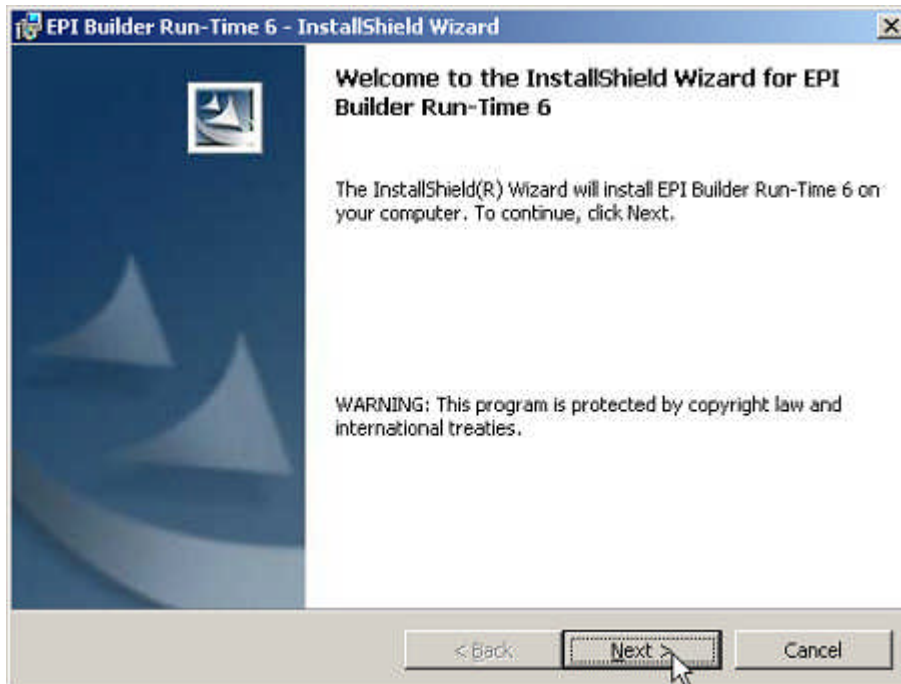


Figure 26.

Click **Next**. The **License Agreement** screen will display (Refer to Figure 27).

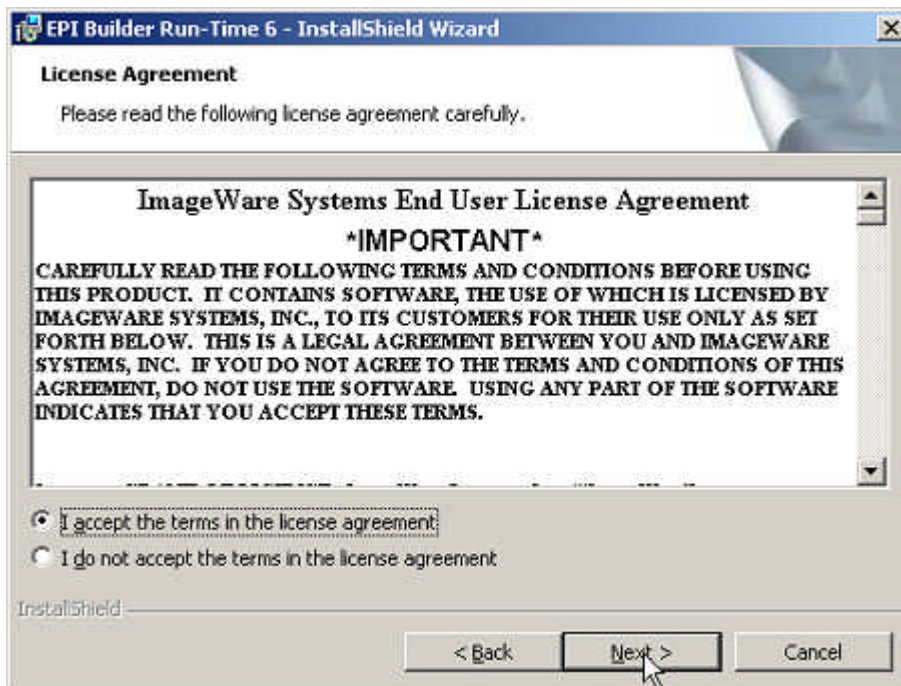


Figure 27.

After reviewing the license agreement, select **I accept the terms in the license agreement**. Click **Next**. The **Customer Information** screen will display (Refer to Figure 28).

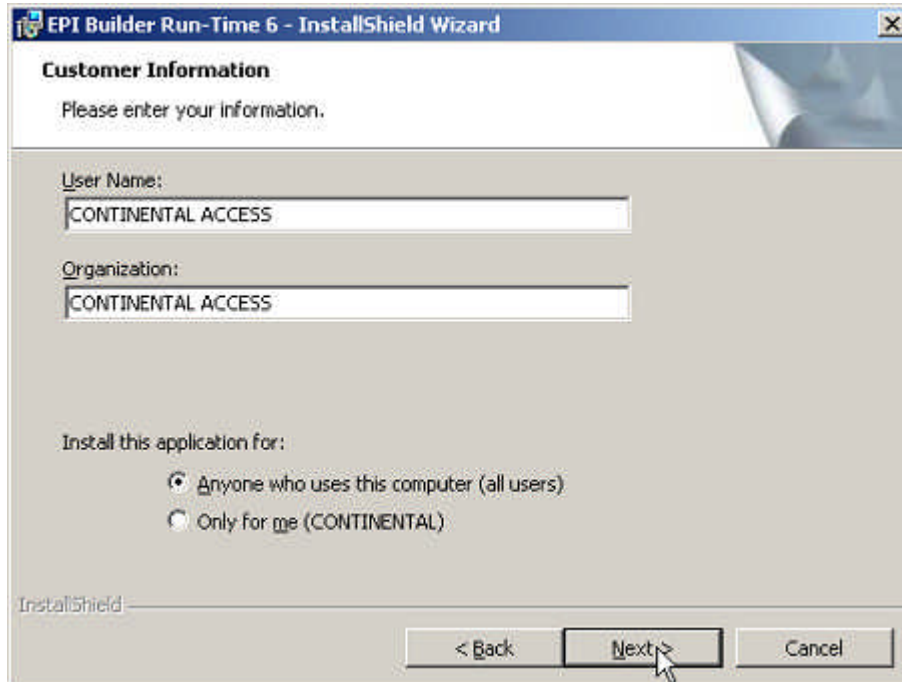


Figure 28.

Enter the User Name and Organization. Click **Next**. The **Ready to Install Program** screen will display (Refer to Figure 29).

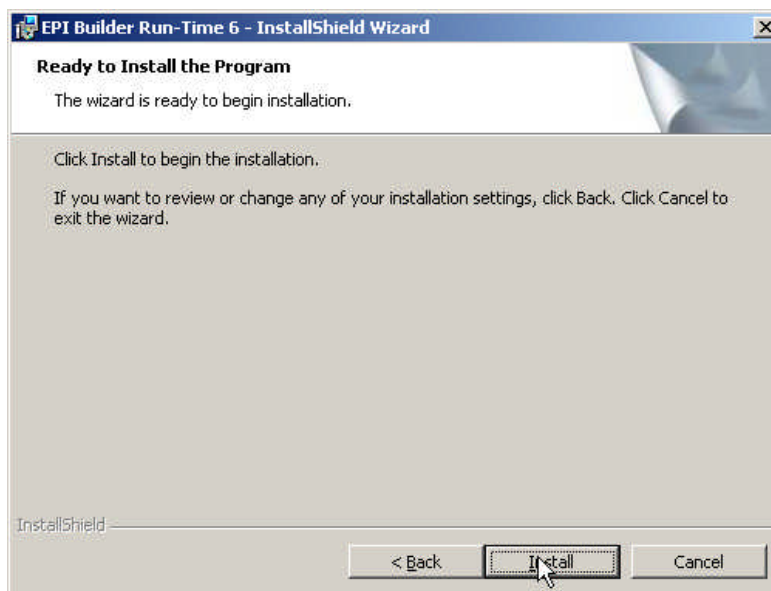


Figure 29.

Click **Install**. The **Installing EPI Builder Runtime 6** screen will display (Refer to Figure 30).

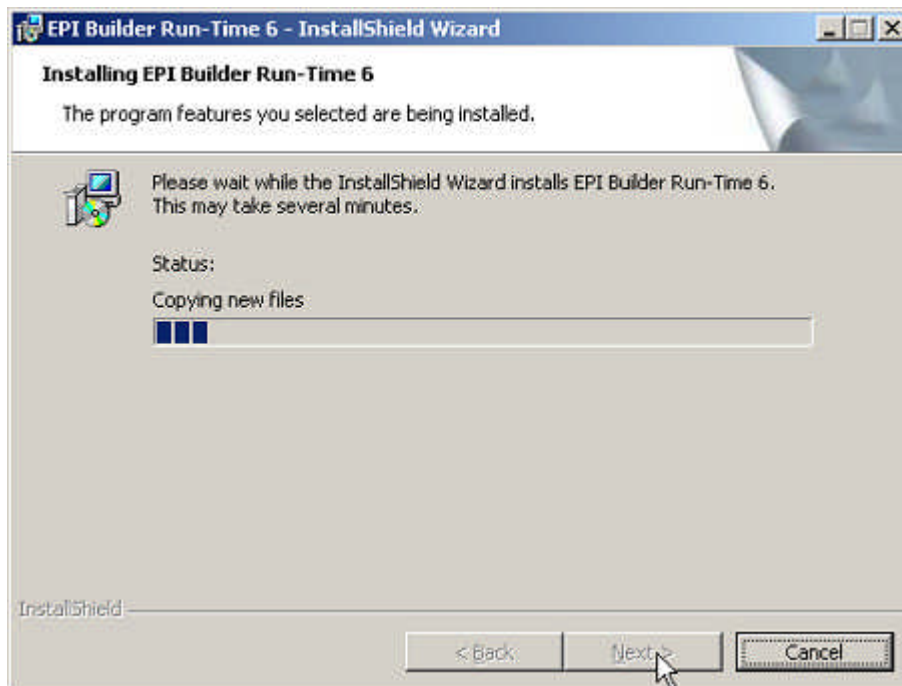


Figure 30.

After the completion of the EPI Builder Runtime 6, the **InstallShield Wizard Completed** screen will display (Refer to Figure 31).

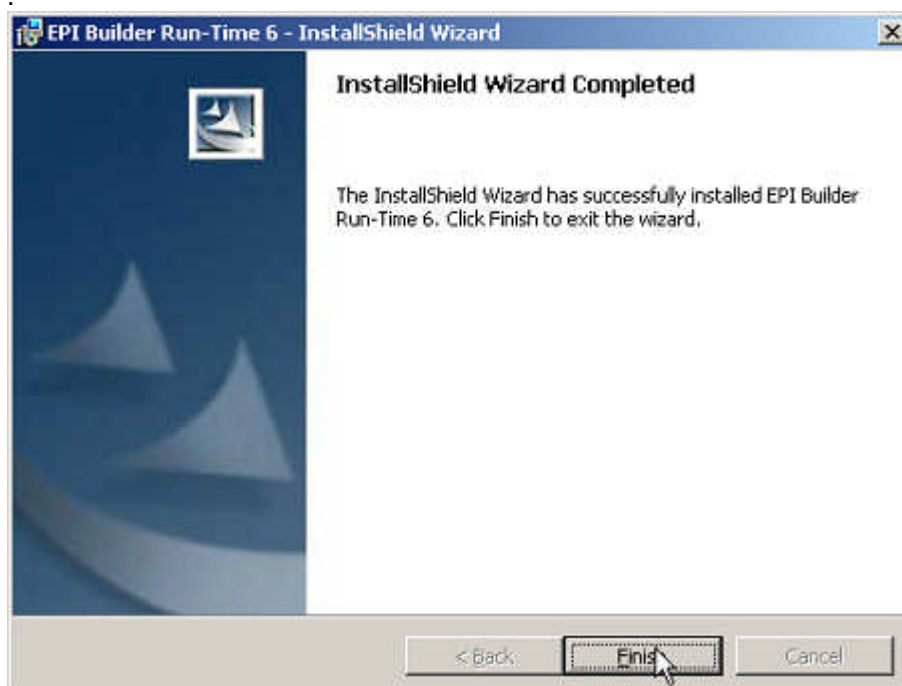


Figure 31.

Click **Finish**. The CardAccess installation is now complete.