

Continental Access

A Napco Security Group Company



V2.7.x Installation on a Database Server

Note: This document is to be used on a new database server installation.

REVISION C

DATE: 11/04/2010

CardAccess® 3000 



CA3000 Software Installation Procedure

Continental Access and CardAccess3000 are registered trademarks of Napco Security Group
Microsoft® is a registered trademark of Microsoft Corporation.
Windows® is a registered trademark of Microsoft Corporation.
CardAccess® is a registered trademark of Napco Security Group

Document Title: V2..7.x Installation on a Database Server

This document contains proprietary information of Continental Access. Unauthorized reproduction of any portion of this manual without the written authorization of Continental Access is prohibited. The information in this manual is for informational purposes only. It is subject to change without notice. Companies, names and data used in examples herein are fictitious unless otherwise noted. Continental assumes no responsibility for incorrect information this manual may contain.

Continental Access
355 Bayview Avenue
Amityville, NY 11701
Phone (631) 842-9400
Fax (631) 842-9135

Web: <http://www.cicaccess.com>

License Agreement

NOTICE TO USER: THIS PACKAGE IS A CONTRACT. BY OPENING THIS SEALED PACKAGE YOU ACCEPT ALL THE TERMS AND CONDITIONS OF THIS AGREEMENT.

Use of the Software: You may install and use the software only for the purpose intended.

Copyright. You may not duplicate or copy the software or documentation, except that you may make one backup copy of the software. All copies must bear copyright notices contained in the original copy.

Limited warranty: Continental Access warrants that the software will perform substantially in accordance with the printed documentation when correctly installed on a properly configured computer for which it is intended. Continental Access warrants the discs upon which this product is recorded to be free from defects in materials and workmanship under normal use for a period of 1 year from the date of purchase. During the warranty period Continental Access will replace discs, which prove to be defective.

Important Information - Must be read before installing software.

- 1) This document covers CardAccess3000 V2.7.19 B223 and later.
- 2) The purpose of a Database Server is to have a dedicated computer with SQL2005 and the CA3000 databases residing on it. The CA3000 Server (Host) points to the Database Server to access the databases. If the system also includes a CardAccess 3000 workstation, you will need a total of 3 computers (Refer to appendix A).
- 3) This procedure is to be used on a new V2.7.x Database Server installation. If you are upgrading from V2.5.16 or earlier, you must uninstall CA3000, SQL2000 and all other components. After all the components are removed, you will install the Database Server as a new install. **VERY IMPORTANT:** Verify all CardAccess.esx and CardAccess.esf files are removed from the computer prior to the installation.
- 4) The installation of a V2.7.x Database Server installation is accomplished using 1 CD.
- 5) The only version of SQL that is used on CA3000 V2.6.19B or later is SQL2005. Any other versions of SQL are not supported and must be removed from the computer.
- 6) It is highly recommended to use the full version of SQL2005 on a Database Server and have it installed prior to performing the installation. If the full version of SQL2005 is not detected during the installation, SQLEXPRESS will be installed from the CA3000 CD.
- 7) The physical security key or the software license for CA3000 must be installed on the CA3000 Server (Host), not the Database Server. The Database Server doesn't require a license.
- 8) Refer to the Server/Host computer specifications for the Database Server.

- 9) You must use a static IP address on a Database Server. Verify you obtain this before installing the CA3000 Database Server software. Contact the network administrator if needed.
- 10) Verify the drive path used to install this Database Server is identical to the drive path used to install the CardAccess 3000 on the Server.
- 11) V2.7.19 B223 uses a 3 character password for SQL 2005. Verify your security setting in Windows (Password must meet complexity requirements) is disabled. This setting must be disabled. Versions newer than V2.7.19 B223 are able to work with strong passwords.
- 12) It is recommended to configure the CA3000 Database Server computer before configuring the CA3000 Server (Host) computer. As previously mentioned, you must configure the Database Utility settings on the CA3000 Server (Host) to point to the database on the Database Server.

CA3000 v2.7 Server/Host PC Recommendations

	Server (1-4 Workstations)	Server (5-19 Workstations)	Server (20-49 Workstations)
Processor	Pentium Dual Core, 2.6GHz (min)	Xeon Quad Core 2.0GHz (min)	2 x Xeon Quad Core 2.0GHz (min)
Ram	2.0 GB Min	4.0 GB Min	8 GB Min
Hard Drive	250 GB	500 GB	Raid 5 - 3 drives minimum
USB Ports	2 Min	2 Min	2 Min
Serial Ports	Optional - 1 expandable to 64	Optional - 1 expandable to 128	Optional - 1 expandable to 128
Parallel Ports	1	1	1
Mouse	PS2 or USB	PS2 or USB	PS2 or USB
Monitor	17" SVGA (1024x768)	17" min	17" min
CD/DVDROM	48x/16x	48x/16x	48x/16x
CDRW/DVDR	24x/8x	24x/8x	24x/8x
Sound	Optional but Stand-Alone recommended	Optional	Optional
Network Card	100/1000 Mb NIC Ethernet	100/1000 Mb NIC Ethernet	100/1000 Mb NIC Ethernet
Operating System	Win XP Pro w/SP3, Win 7 Pro 32 bit (configured in Win XP Compatibility Mode), Win 2003 32 bit, or Win 2008 32 bit. Note: 64 bit computers are not supported.	Win XP Pro w/SP3, Win 7 Pro 32 bit (configured in Win XP Compatibility Mode), Win 2003 32 bit, or Win 2008 32 bit. Note: 64 bit computers are not supported.	Win 2003 32 bit or Win 2008 32 bit. Note: 64 bit computers are not supported.
Database	MSSQL 2005 Express or MSSQL Server 2005 for higher performance	MSSQL Server 2005 recommended	MSSQL Server 2005
Backup	Tape / CD / DVD / Network	Tape / CD / DVD / Network	Tape / CD / DVD / Network
System Size	This is the recommended PC server specification for a system with up to four workstations. It can be used for a stand-alone system, a workstation or a CA3000 Server. For high transaction environments some specifications may change.	This is the recommended PC specification for a CA3000 Server supporting up to nineteen workstations. For high transaction environments some specifications may change.	This is the recommended PC specification for a CA3000 Server supporting up to nineteen workstations. For high transaction environments some specifications may change. For larger systems please consult with Continental Access.
Notes:	(1) If using SQLExpress, the database size should not exceed 4GB. (2) Disk drive usage is dependent on the number of transactions kept in backup. (3) Additional RAM will improve performance (4) It is best to perform badging and other integration functions on a workstation, not the server.		

***** Other than a small Stand-Alone system, Continental Access does not recommend running Photo-badging, DVR/NVR Integration, Napco Integration, Scripting, or Dynamic Maps from a Host machine. Please refer to our Workstation Recommendation below for these specifications. *****

Scope

This document contains information regarding the installation of a CA3000 V2.7.x Database Server. The Database Server installs all the required files and utilities to create and maintain databases. Refer to Appendix A for a configuration diagram.

InstallShield Wizard

If auto start is enabled on your system, the **CardAccess3000 Version 2.7 Setup** screen will display after inserting the CA3000 CD in the CD-ROM drive (Refer to Figure 2). If Figure 2 displays, skip ahead to the steps following Figure 2. If nothing happens after inserting the CA3000 CD in the CD-ROM, continue with the next steps.

Note: If auto start is not enabled on your system, follow the steps below to execute the program.

- a. Click the **Start** menu on your PC, and then click on the **Run** menu option. You will see the 'Run' dialog box.
- b. In the 'Run' dialog box, click the white space of the **open** control, and type in **D:\bin\launch.exe** (Refer to Figure 1).

Note: D represents CD-ROM drive letter. This letter will be different depending on the drive letter of your CD-ROM.

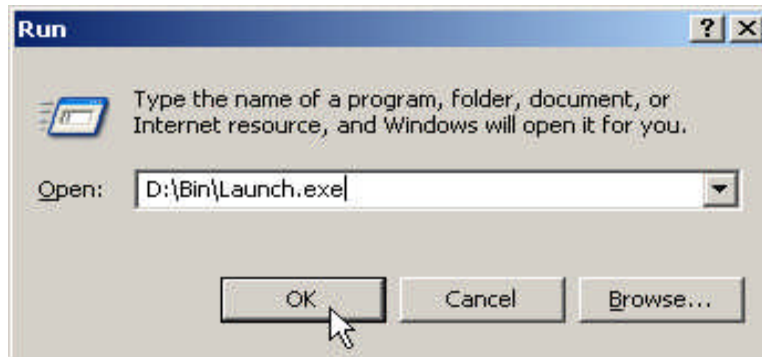


Figure 1.

Click on **OK** in the 'Run' dialog (Refer to figure 1). The **CardAccess3000 Version 2.7 setup** screen will display (Refer to Figure 2).



Figure 2.

Click on the **Install CardAccess 3000** button. Click **Next**, The **Pending DVR Prerequisites** screen will display (Refer to Figure 3).

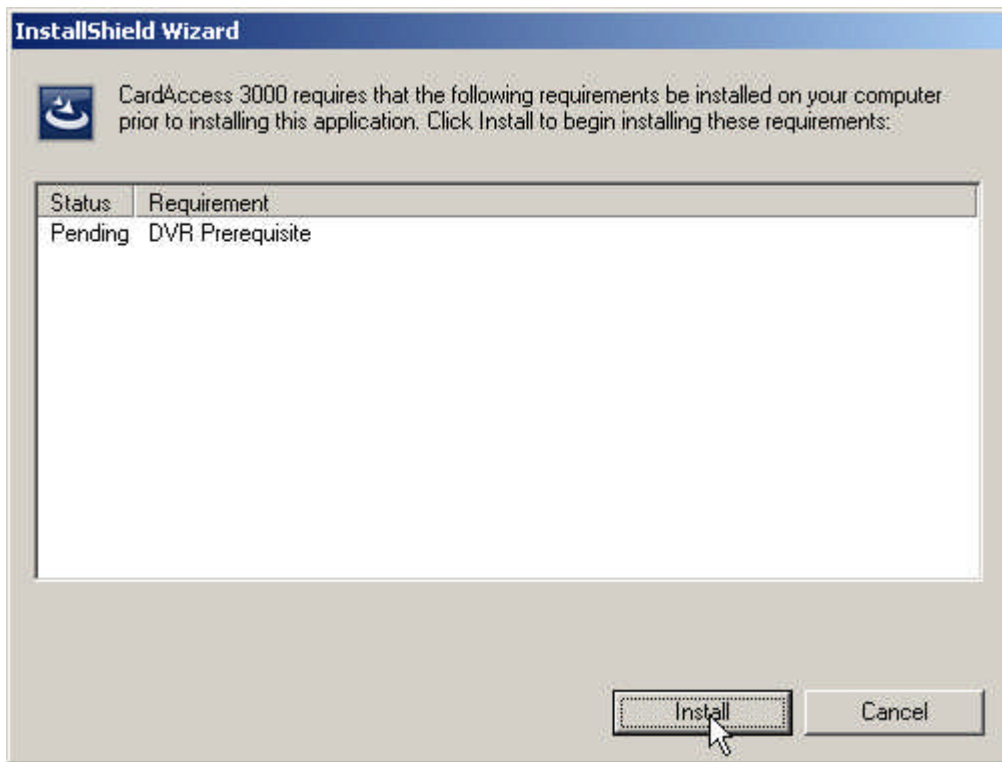


Figure 3.

Click on **Install**. The Installing DVR Prerequisites screen will display (Refer to Figure 4).

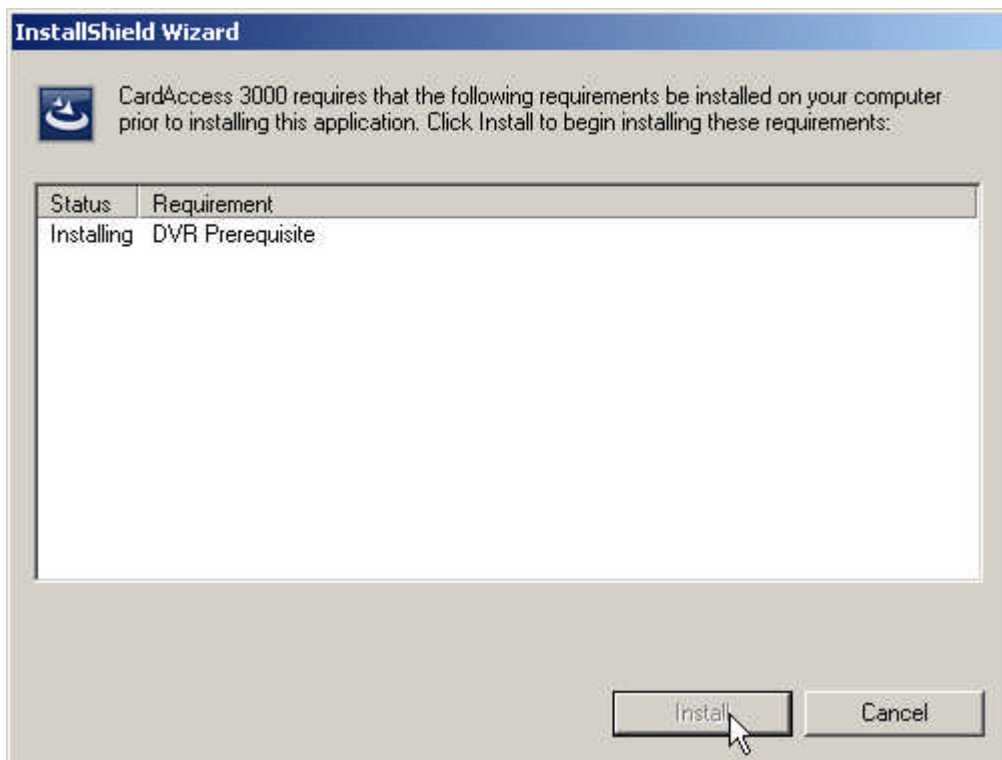


Figure 4.

During the installation of the DVR Prerequisites, a screen will display referencing the installation of the VC++ redistributable files if these are not already installed on the computer. You will be prompted to **INSTALL** or **CANCEL**. Click install.

Microsoft .NET Framework Installation

The installation of CardAccess3000 requires Microsoft .NET Framework 3.5. If this is not currently installed, the CA3000 installation process will install it (Refer to Figure 5).

If “Microsoft .NET Framework 3.5” is already installed on the computer, the installation process will skip to the **ADH Source Filter for Direct Show Setup Wizard** screen (Refer to figure 6).

NOTE: Be patient...The .Net Framework 3.5 installation will take a few minutes.

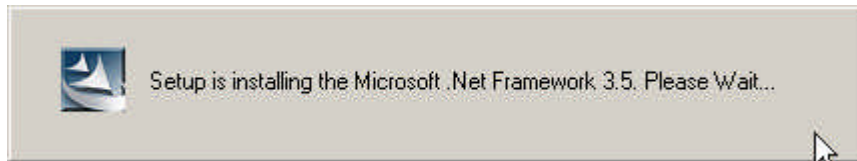


Figure 5.

At the completion of the Installation of the .Net Framework 3.5, the **ADH Source Filter for Direct Show Setup Wizard** screen will display (Refer to Figure 6).



Figure 6.

Click **Next**. The **ADH Source Filter for Direct Show Select Installation Folder** screen will display (Refer to Figure 7).

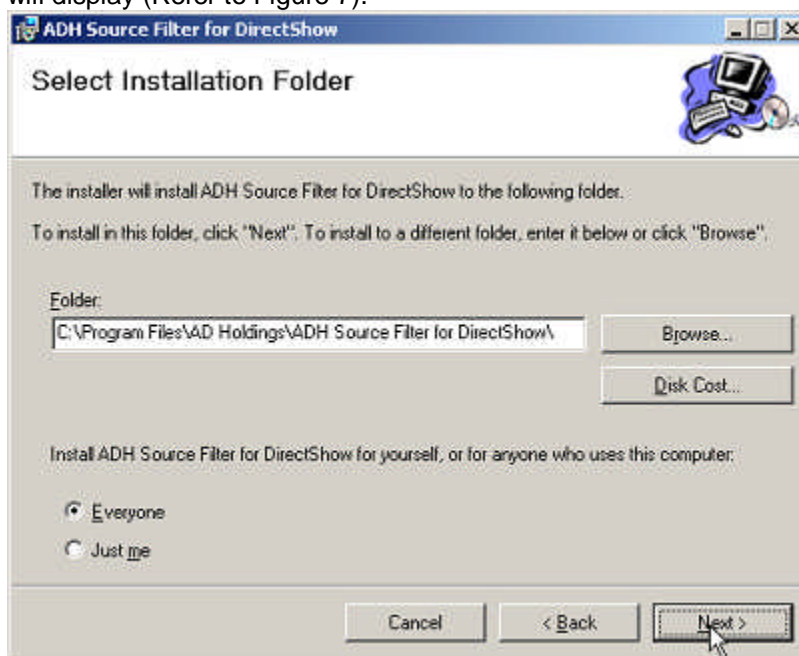


Figure 7.

Click **Next**. The **ADH Source Filter for Direct Show Confirm Installation** screen will display (Refer to Figure 8).

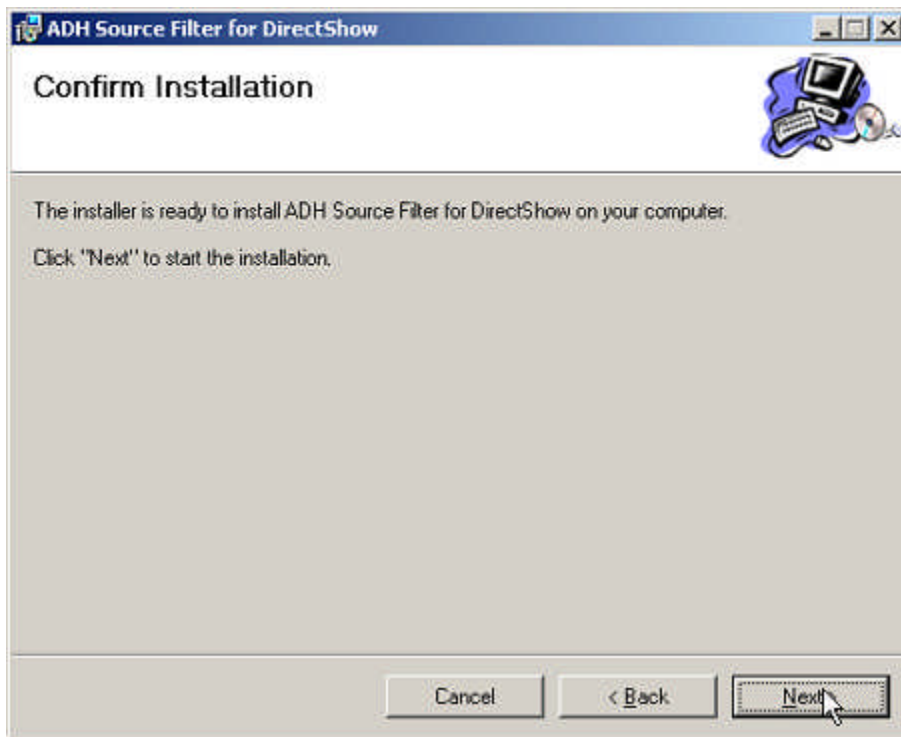


Figure 8.
Click **Next**. The **ADH Source Filter for Direct Show Installation Complete** screen will display after the installation is finished (Refer to Figure 9).

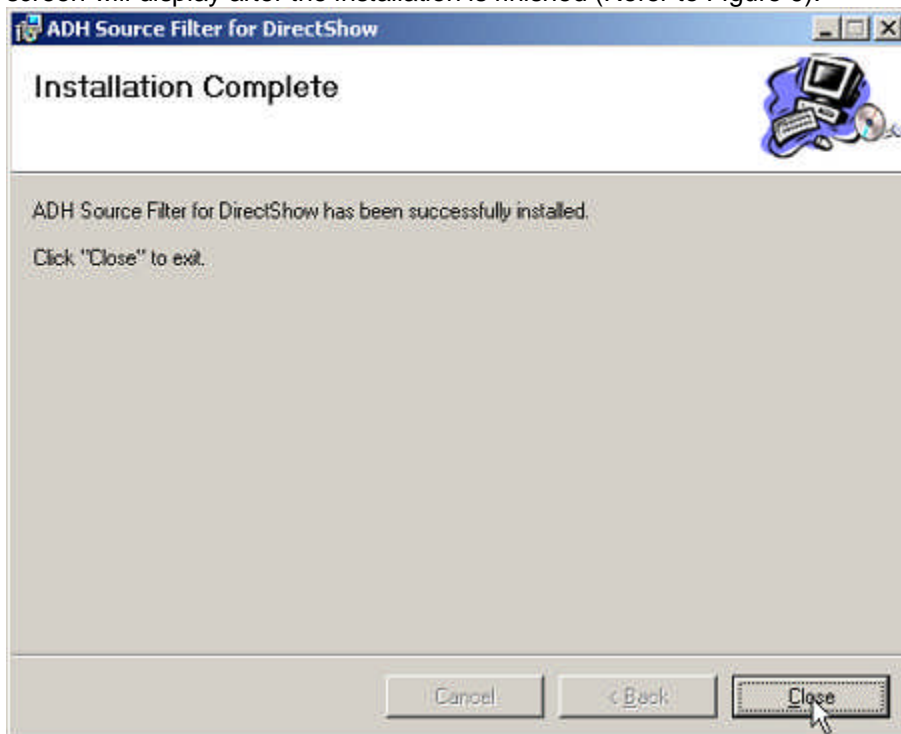


Figure 9.
Click **Close**.

CardAccess 3000 Setup

The CardAccess 3000 **InstallShield Wizard** screen will display for a short period while CardAccess 3000 is preparing to install. After the CardAccess 3000 InstallShield wizard screen, the **Welcome to CardAccess 3000 setup program** screen displays (Refer to Figure 10).

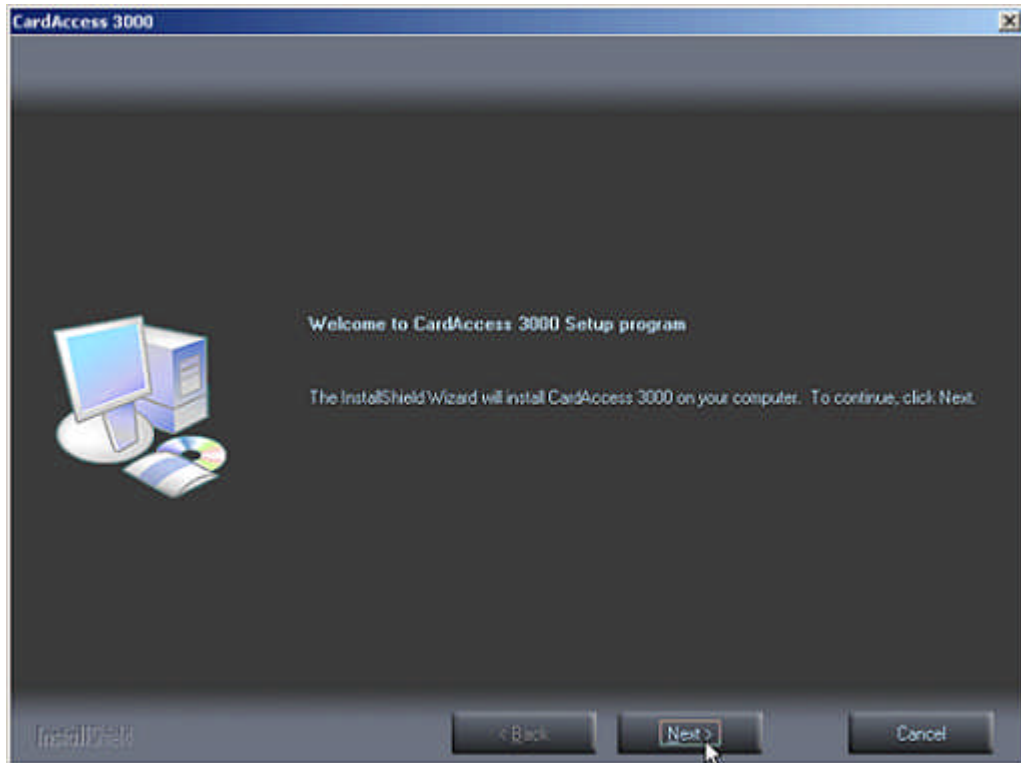


Figure 10.

Click **Next**. The **Select CardAccess Server Type** screen will display (Refer to Figure 11).

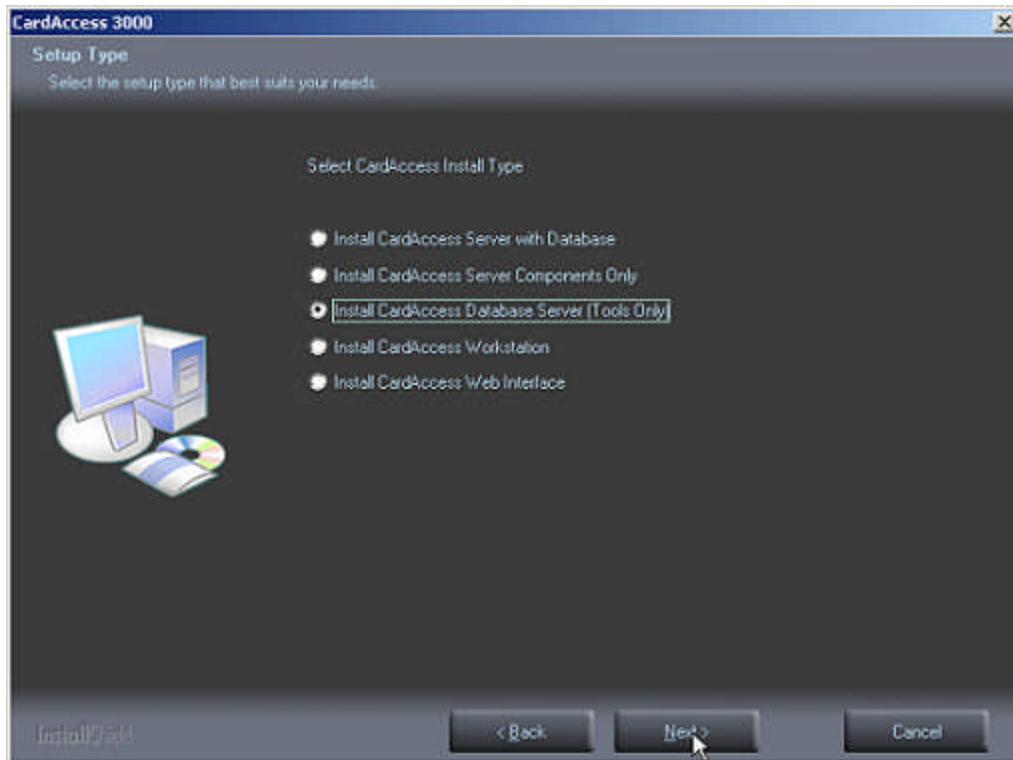


Figure 11.

Select the **Install CardAccess Database Server (Tools Only)** option.

Click **Next**. You will be prompted with the following question (Refer to Figure 12).

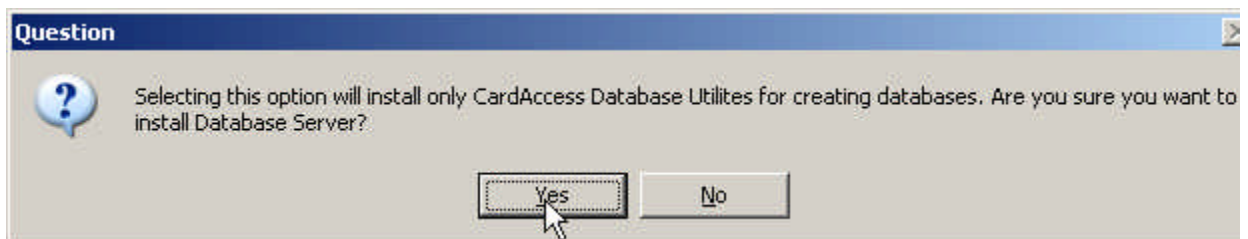


Figure 12.

Click **Yes**. You will be prompted with the following information (Refer to Figure 13).



Figure 13.

Click **OK**. The **Select CardAccess Destination Folder** screen will display (Refer to Figure 14).

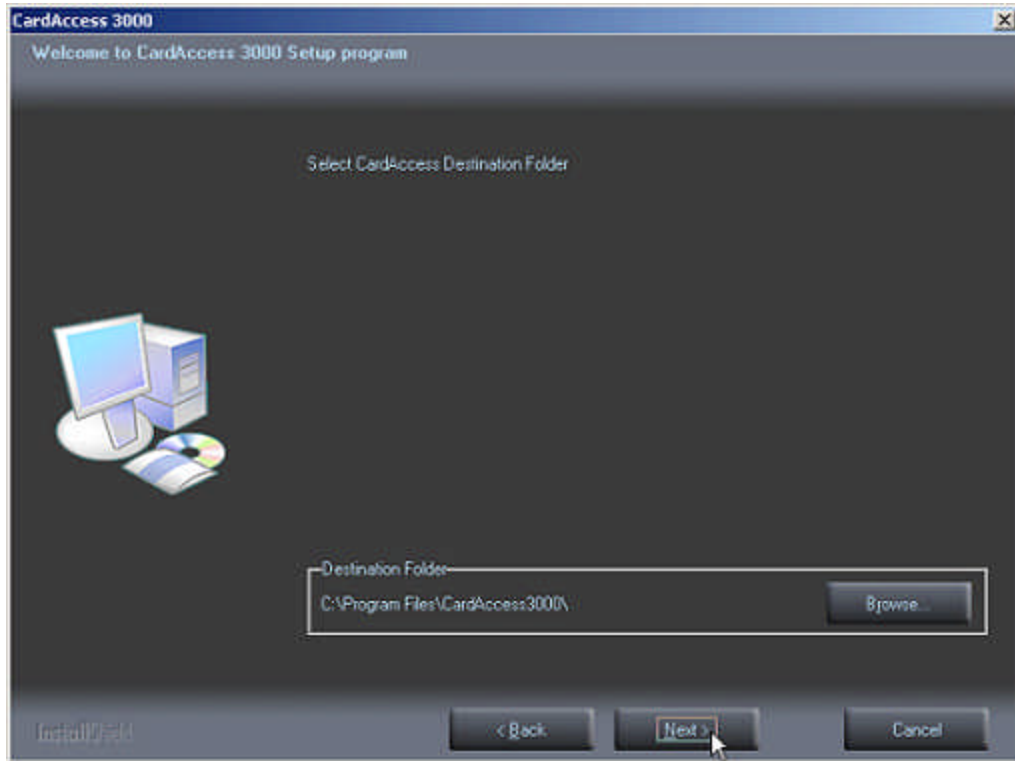


Figure 14.

The default path will display. If you are installing CardAccess 3000 to a different path, click the **Browse** button and select the path.

NOTE: As previously mentioned, the drive path used to install this Database Server must be identical to the drive path used to install the CardAccess 3000 on the server.

Click **Next**. The **Current Settings** screen will display (Refer to Figure 15).

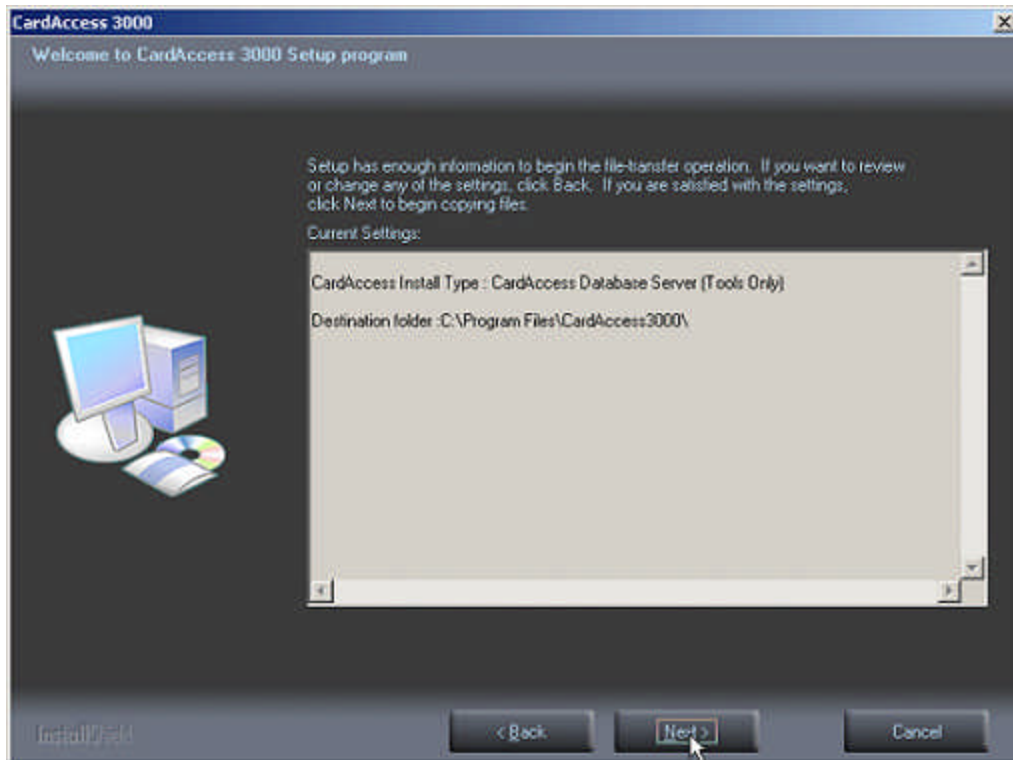


Figure 15.

After reviewing the current settings, click **Next**. A progress bar will display while the CardAccess 3000 is installing (Refer to Figure 16).

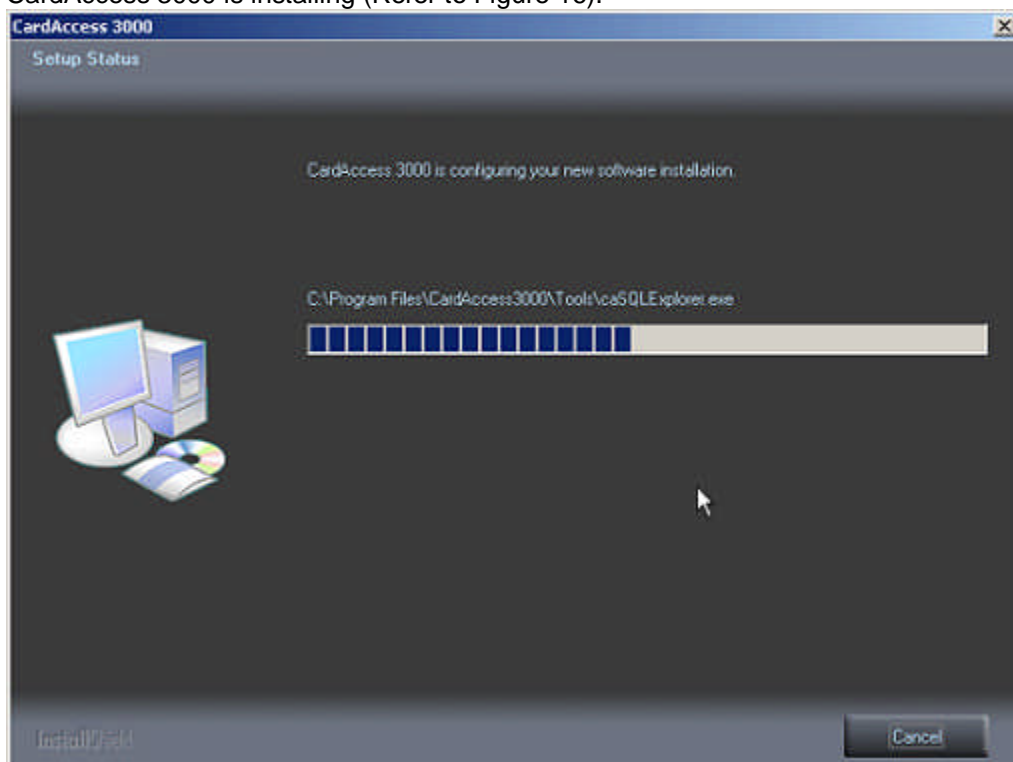


Figure 16.

VERY IMPORTANT: As previously noted, it is highly recommended to have the full version of SQL 2005 pre-installed. The installation will check for a previously installed version of SQL 2005.

If a version of SQL 2005 is not detected, this installation will install SQL Express 2005. Refer to “**SQL Express 2005 Installation**” in the following steps.

Note: If you are using a shared drive to install CA3000 and SQL, you must have it mapped to a drive letter.

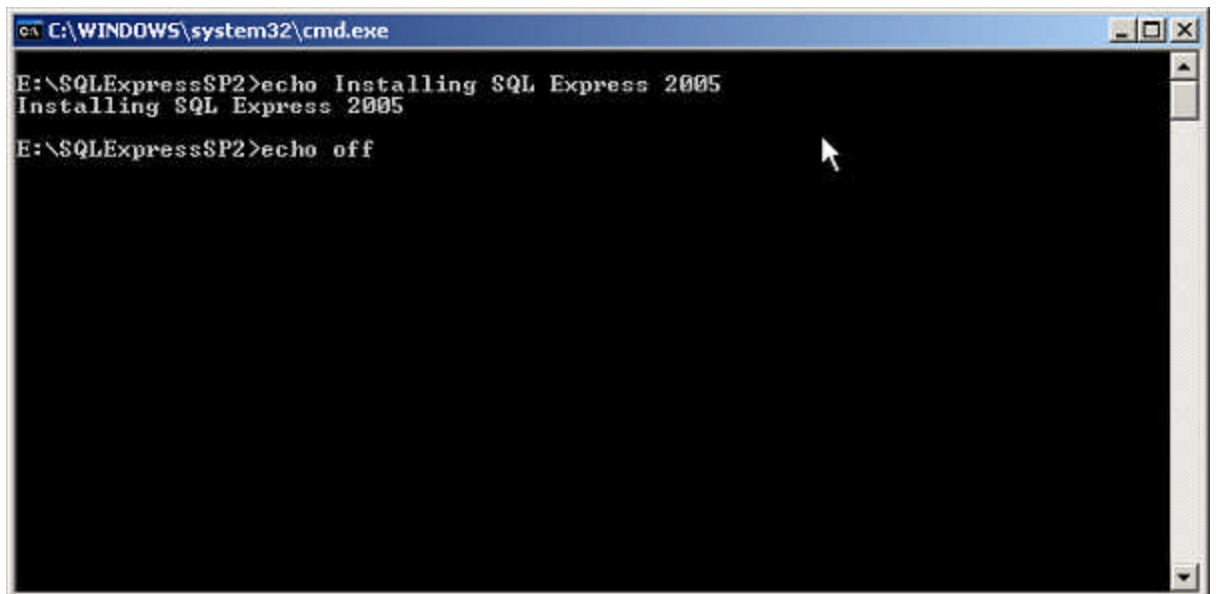
If a version of SQL 2005 is detected, the installation process will skip to “**AUTOMATIC DATABASE CREATION**” (Refer to figure 21).

SQL Express 2005 Installation

Note: The following steps will not occur if SQL 2005 already exists.

The SQL 2005 installation will start automatically. The **Microsoft SQL Server 2005 Setup** screens will display (Refer to Figure 17, 18 19 and 20).

Note: Depending on your operating system, a few other screens might display momentarily during the installation of SQL Express

A screenshot of a Windows command prompt window. The title bar reads "C:\WINDOWS\system32\cmd.exe". The command prompt shows the following text:

```
E:\SQLEXPRESS\SP2>echo Installing SQL Express 2005
Installing SQL Express 2005
E:\SQLEXPRESS\SP2>echo off
```

A mouse cursor is visible over the text.

Figure 17.

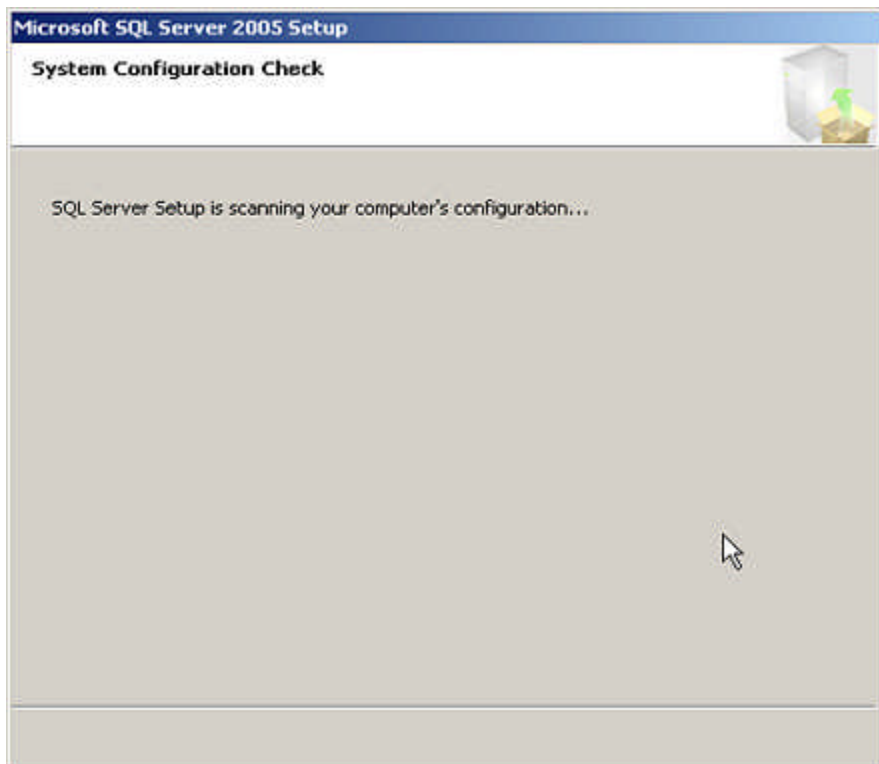


Figure 18.

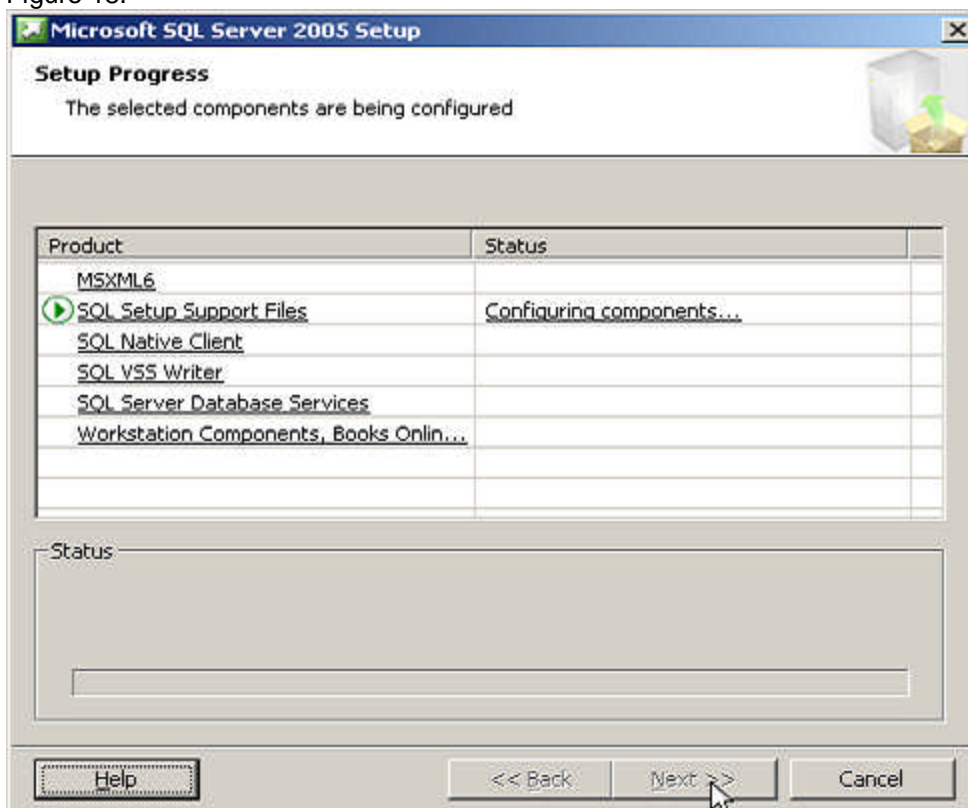


Figure 19.

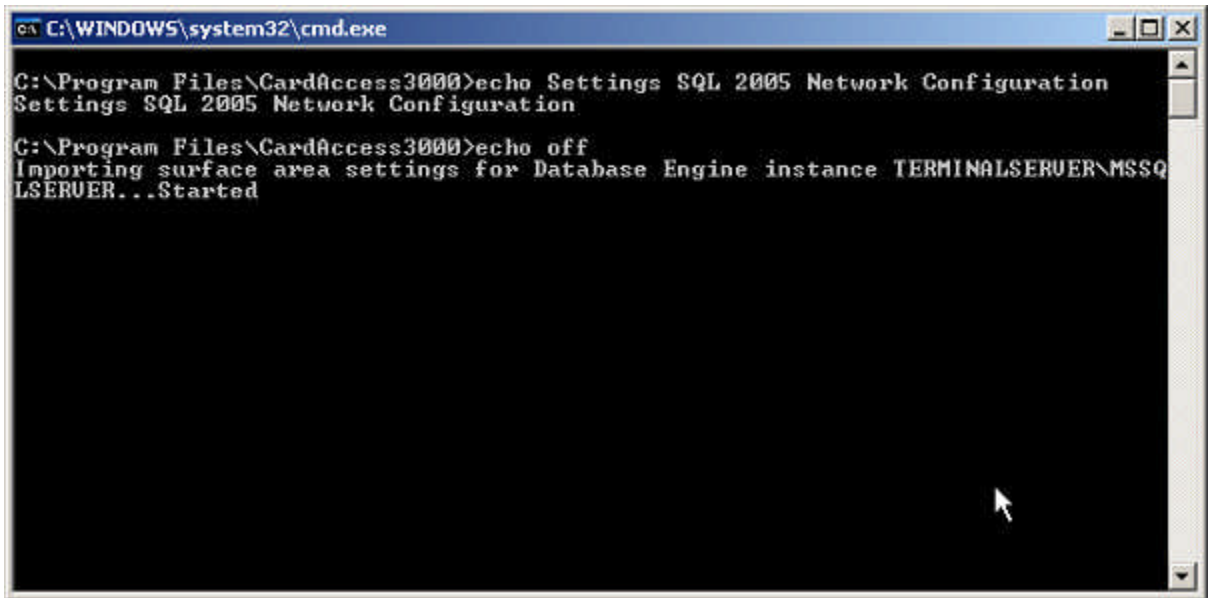


Figure 20.

At the completion of the SQL Express 2005 installation, the Automatic Database Creation screen will display (Refer to Figure 21).

Automatic Database Creation

Note: Previous to the **Automatic Database creation tool** screen, a database setup/update screen will momentarily display.

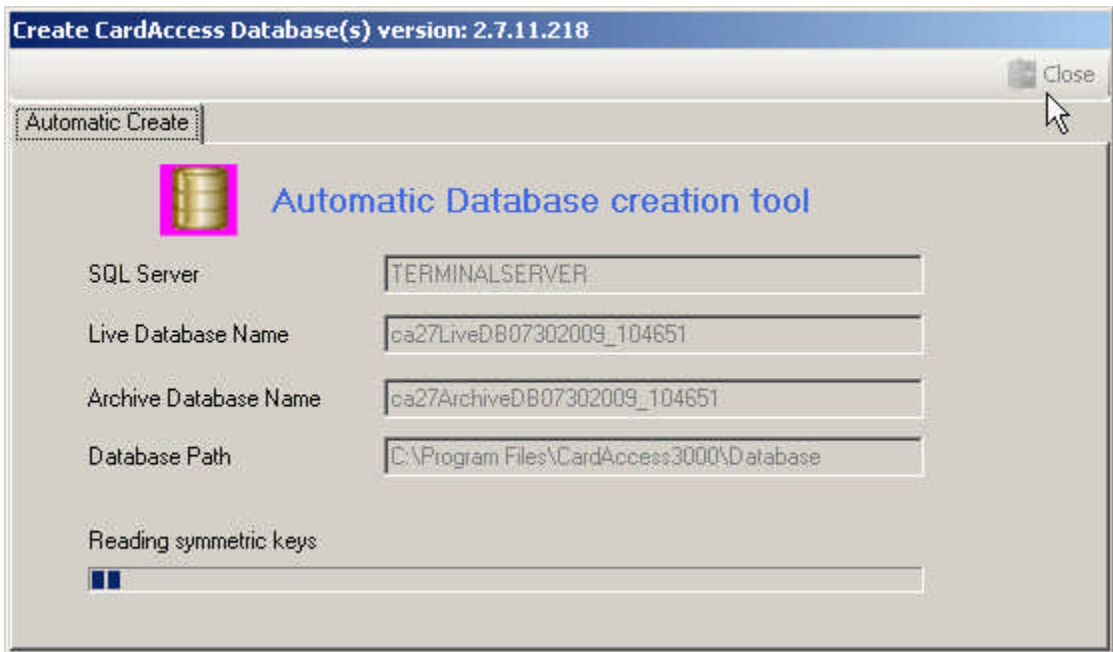


Figure 21.

This process will take a few minutes. A live and archive database will be created automatically. At the completion of the **Automatic Database Creation**, the **InstallShield Wizard Complete** screen will display (Refer to Figure 22).

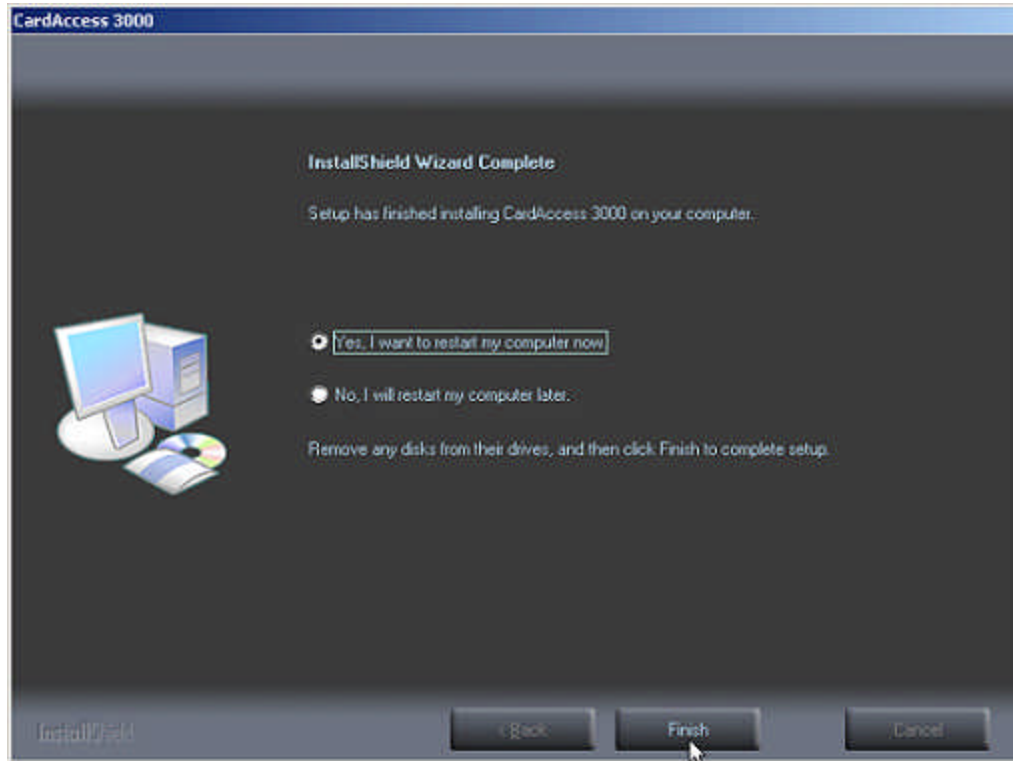


Figure 22.

Verify the **Yes, I want to restart my computer now** option is selected. This should be selected by default. Click **Finish**. The computer will restart.

The CardAccess 3000 Database Server installation is now complete.

VERY IMPORTANT:

There should be no need to configure the Database utility on the Database Server. If the Database Server installation completed successfully, two databases should have been created automatically (a live and archive database).

You **MUST** configure the database utility on the CA3000 Server (Host) to point to the live database on the Database Server.

IMPORTANT NOTE: The following settings are for the Database utility on the CA3000 host, NOT the Database Server. It is recommended to configure the following settings in the order they are listed. On previous versions of CA3000, if the CICDatasever Host setting was configured prior to the SQL Server setting, the CICDatasever Host setting might change.

SQL Server = Name of the SQL server on the Database Server.

SQL Database = Name of the live database on the Database Server

CICDatasever Host = IP address of the CA3000 Server (Host) or the loopback address (127.0.0.1.) **VERY IMPORTANT:** Verify this address is NOT pointing to the Database Server IP address.

CICDatasever Port = 9000.

Network Station ID = Host PC

APPENDIX A

CA3000 Host, Workstation and Database Server configuration

