

Continental Access

A Napco Security Group Company



V2.7.x Installation on a Server/Host Procedure

Note: This document is to be used on a new install. If upgrading from an earlier version, refer to the appropriate CardAccess3000 upgrade procedure.

REVISION D

DATE: 12/09/2010

CardAccess® 3000 



CA3000 Software Installation Procedure

Continental Access and CardAccess3000 are registered trademarks of Napco Security Group

Microsoft® is a registered trademark of Microsoft Corporation.

Windows® is a registered trademark of Microsoft Corporation.

CardAccess® is a registered trademark of Napco Security Group

Document Title V 2..7.x Installation on a Server/Host Procedure

This document contains proprietary information of Continental Access. Unauthorized reproduction of any portion of this manual without the written authorization of Continental Access is prohibited. The information in this manual is for informational purposes only. It is subject to change without notice. Companies, names and data used in examples herein are fictitious unless otherwise noted. Continental assumes no responsibility for incorrect information this manual may contain.

Continental Access
355 Bayview Avenue
Amityville, NY 11701
Phone (631) 842-9400
Fax (631) 842-9135

Web: <http://www.cicaccess.com>

License Agreement

NOTICE TO USER: THIS PACKAGE IS A CONTRACT. BY OPENING THIS SEALED PACKAGE YOU ACCEPT ALL THE TERMS AND CONDITIONS OF THIS AGREEMENT.

Use of the Software: You may install and use the software only for the purpose intended.

Copyright. You may not duplicate or copy the software or documentation, except that you may make one backup copy of the software. All copies must bear copyright notices contained in the original copy.

Limited warranty: Continental Access warrants that the software will perform substantially in accordance with the printed documentation when correctly installed on a properly configured computer for which it is intended. Continental Access warrants the discs upon which this product is recorded to be free from defects in materials and workmanship under normal use for a period of 1 year from the date of purchase. During the warranty period Continental Access will replace discs, which prove to be defective.

Important Information - Must be read before installing software.

- 1) This document covers CardAccess 3000 V2.7.19 B223 and later.
- 2) Version 2.7.x installation is accomplished using only 1 CD. Unlike V2.6.19B, there is only 1 CD for version 2.7.x.
- 3) Cardaccess3000 Version 2.7.x uses SQL2005 for the database engine. Any other versions of SQL are not supported and must be removed from the computer prior to installing the CardAccess3000, V2.7.x.
- 4) If you have Cardaccess3000 V2.5.16 or earlier, you must uninstall it prior to installing the Cardaccess3000 V2.7.x.

Note: Refer to the “Upgrading CA3000 to V2.6” document if you are upgrading from Cardaccess3000 V2.5.16 or earlier.

- 3) Refer to the recommended computer specifications to determine if a full version of SQL2005 should be used rather than the SQL Express that is installed during the CardAccess3000 installation.
- 4) Verify you have a physical security key or a software license for Cardaccess3000 V2.7.x. Security keys and software licenses from previous versions of CardAccess3000 are not compatible with this version. If you have a V.2.7.x security key, it will work on all V2.7.x versions.

VERY IMPORTANT: Do not put the key on until the installation of CardAccess3000 is complete.

CA3000 v2.7 Server/Host PC Recommendations

	Server (1-4 Workstations)	Server (5-19 Workstations)	Server (20-49 Workstations)
Processor	<i>Pentium Dual Core, 2.6GHz (min)</i>	<i>Xeon Quad Core 2.0GHz (min)</i>	<i>2 x Xeon Quad Core 2.0GHz (min)</i>
Ram	<i>2.0 GB Min</i>	<i>4.0 GB Min</i>	<i>8 GB Min</i>
Hard Drive	<i>250 GB</i>	<i>500 GB</i>	<i>Raid 5 - 3 drives minimum</i>
USB Ports	<i>2 Min</i>	<i>2 Min</i>	<i>2 Min</i>
Serial Ports	<i>Optional - 1 expandable to 64</i>	<i>Optional - 1 expandable to 128</i>	<i>Optional - 1 expandable to 128</i>
Parallel Ports	<i>1</i>	<i>1</i>	<i>1</i>
Mouse	<i>PS2 or USB</i>	<i>PS2 or USB</i>	<i>PS2 or USB</i>
Monitor	<i>17" SVGA (1024x768)</i>	<i>17" min</i>	<i>17" min</i>
CD/DVDROM	<i>48x/16x</i>	<i>48x/16x</i>	<i>48x/16x</i>
CDRW/DVDR	<i>24x/8x</i>	<i>24x/8x</i>	<i>24x/8x</i>
Sound	<i>Optional but Stand-Alone recommended</i>	<i>Optional</i>	<i>Optional</i>
Network Card	<i>100/1000 Mb NIC Ethernet</i>	<i>100/1000 Mb NIC Ethernet</i>	<i>100/1000 Mb NIC Ethernet</i>
Operating System	<i>Win XP Pro w/SP3, Win 7 Pro 32 bit (configured in Win XP Compatibility Mode), Win 2003 32 bit, or Win 2008 32 bit. Note: 64 bit computers are not supported.</i>	<i>Win XP Pro w/SP3, Win 7 Pro 32 bit (configured in Win XP Compatibility Mode), Win 2003 32 bit, or Win 2008 32 bit. Note: 64 bit computers are not supported.</i>	<i>Win 2003 32 bit or Win 2008 32 bit Note: 64 bit computers are not supported.</i>
Database	<i>MSSQL 2005 Express or MSSQL Server 2005 for higher performance</i>	<i>MSSQL Server 2005 recommended</i>	<i>MSSQL Server 2005</i>
Backup	<i>Tape / CD / DVD / Network</i>	<i>Tape / CD / DVD / Network</i>	<i>Tape / CD / DVD / Network</i>
System Size	<i>This is the recommended PC server specification for a system with up to four workstations. It can be used for a stand-alone system, a workstation or a CA3000 Server. For high transaction environments some specifications may change.</i>	<i>This is the recommended PC specification for a CA3000 Server supporting up to nineteen workstations. For high transaction environments some specifications may change.</i>	<i>This is the recommended PC specification for a CA3000 Server supporting up to nineteen workstations. For high transaction environments some specifications may change. For larger systems please consult with Continental Access.</i>
Notes:	<i>(1) If using SQLExpress, the database size should not exceed 4GB. (2) Disk drive usage is dependent on the number of transactions kept in backup. (3) Additional RAM will improve performance (4) It is best to perform badging and other integration functions on a workstation, not the server.</i>		

***** Other than a small Stand-Alone system, Continental Access does not recommend running Photo-badging, DVR/NVR Integration, Napco Integration, Scripting, or Dynamic Maps from a Host machine. Please refer to our Workstation Recommendation below for these specifications. *****

Scope

This document contains information regarding the installation of CA3000 V2.7.x (CardAccess Server with Database). This procedure doesn't include the installation of the EPI Badging3000. It is recommended to install the EPI Badging3000 on a workstation. If you choose to install the EPI Badging3000 during this install, some of the following steps/screens will be different.

InstallShield Wizard

If auto start is enabled on your system, the **CardAccess3000 Version 2.7 Setup** screen will display after inserting the CA3000 CD in the CD-ROM drive (Refer to Figure 2). If Figure 2 displays, skip ahead to the steps following Figure 2. If nothing happens after inserting the CA3000 CD in the CD-ROM, continue with the next steps.

Note: If auto start is not enabled on your system, follow the steps below to execute the program.

- a. Click the **Start** menu on your PC, and then click on the **Run** menu option. You will see the 'Run' dialog box.
- b. In the 'Run' dialog box, click the white space of the **open** control, and type in **d:\launch.exe** (Refer to Figure 1).

Note: "d:" represents the CD-ROM drive letter. This letter will be different depending on the drive letter of your CD-ROM.

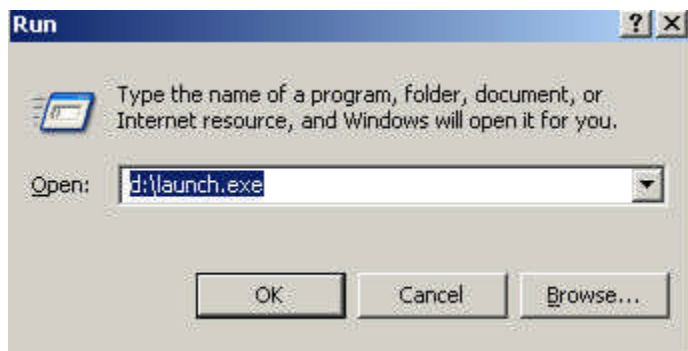


Figure 1

Click on **OK** in the 'Run' dialog. The **CardAccess3000 Version 2.7 setup** screen will display (Refer to Figure 2).



Figure 2.

Click on the **Install CardAccess 3000** button. The **Pending DVR Prerequisites** screen will display (Refer to Figure 3).

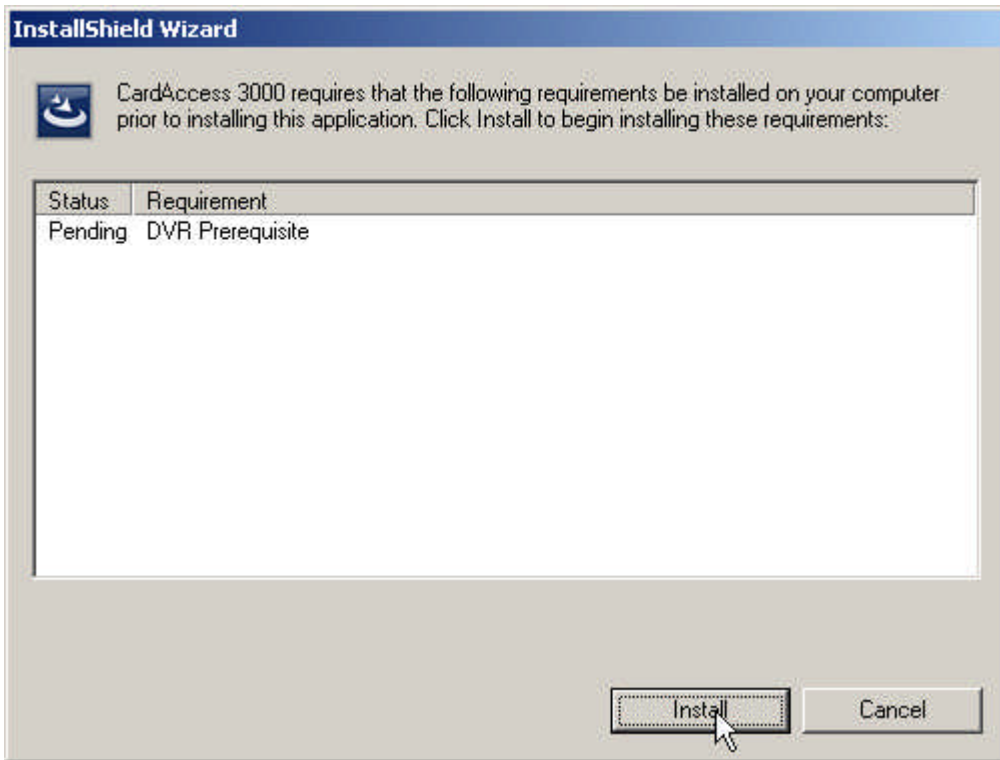


Figure 3.

Click on **Install**. The **Installing DVR Prerequisites** screen will display (Refer to figure 4).

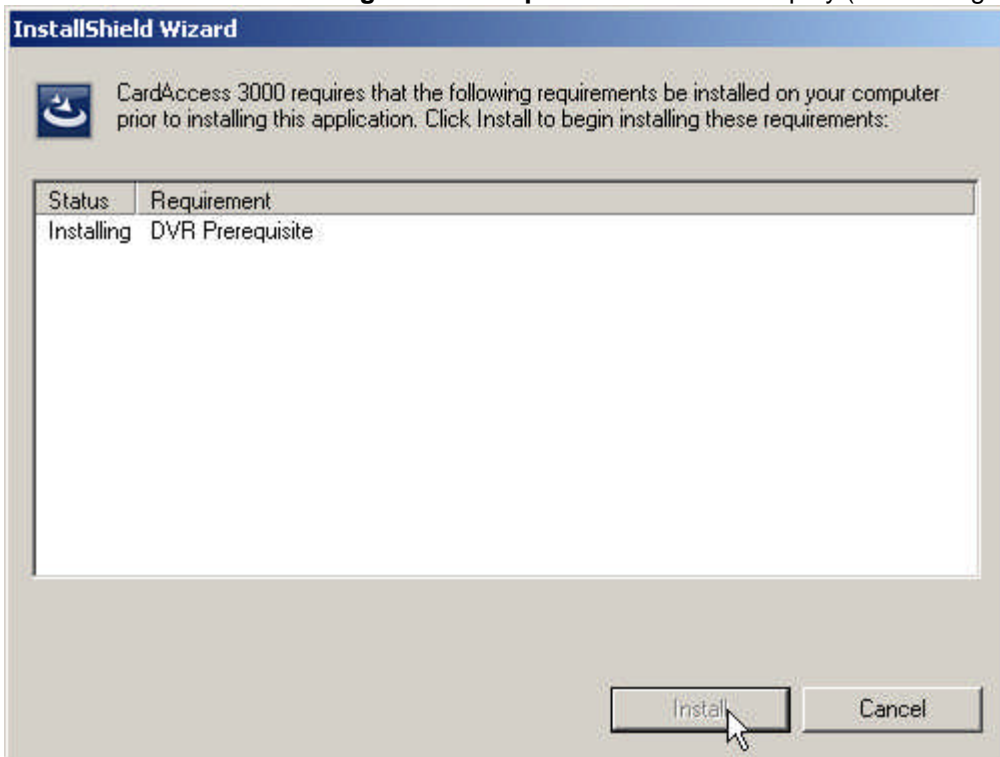


Figure 4.

Microsoft .NET Framework Installation

The installation of CardAccess3000 requires Microsoft .NET Framework 3.5. If this is not currently installed, the CA3000 installation process will install it (Refer to figure 5). If this is already installed on the computer, the installation process will skip to the **CardAccess3000 setup**.

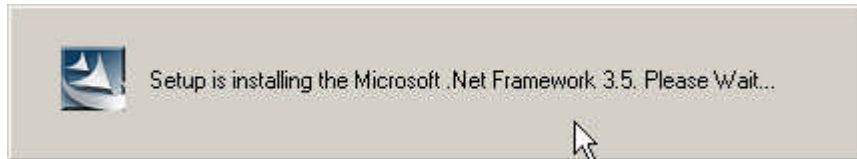


Figure 5.

At the completion of the **Installation of the .Net Framework 3.5**, the **ADH Source Filter for Direct Show Setup Wizard** screen will display (Refer to figure 6).

Note: You might be prompted to install VC++ redistributable files if these files are not already installed on the computer. If so, you will be prompted to **INSTALL** or **CANCEL**. Click **INSTALL**.



Figure 6.

Click **Next**. The **ADH Source Filter for Direct Show Select Installation Folder** screen will display (Refer to figure 7).

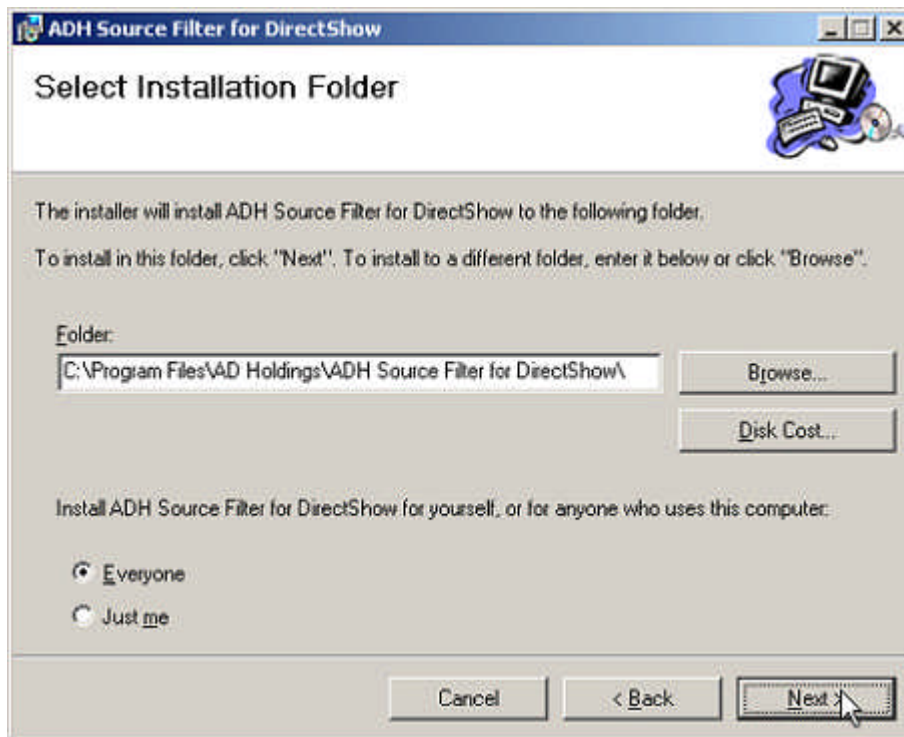


Figure 7.
Click **Next**. The **ADH Source Filter for Direct Show Confirm Installation Folder** screen will display (Refer to figure 8).

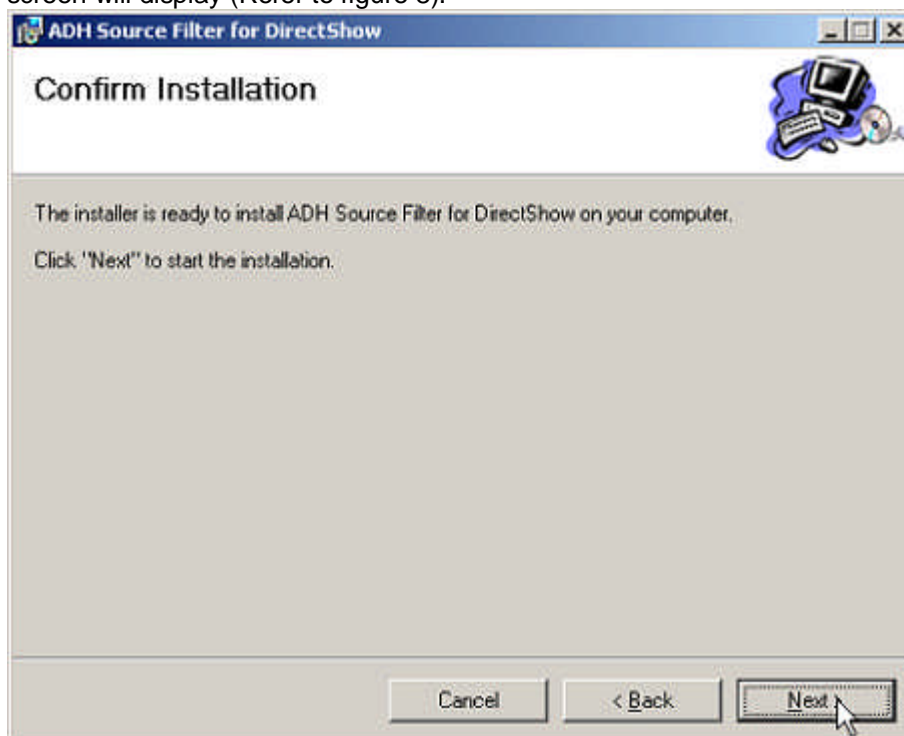


Figure 8.
Click **Next**. The **ADH Source Filter for Direct Show Installation Complete** screen will display after the installation is finished (Refer to figure 9).

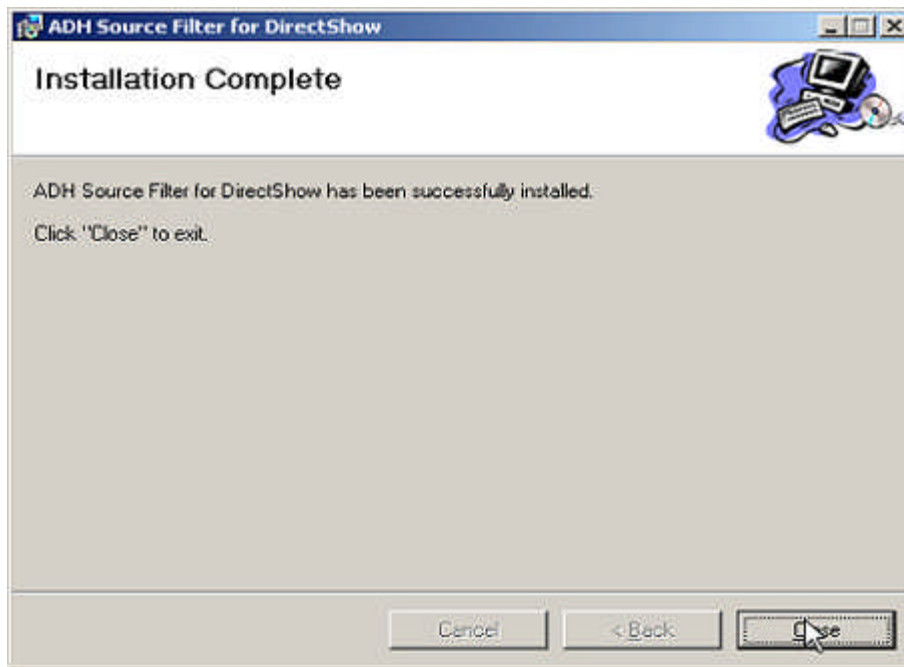


Figure 9.
Click **Close**. At the completion of the **ADH Source Filter for Direct Show** installation, the **Welcome to CardAccess 3000 Setup program** will display (Refer to figure 10).

CardAccess 3000 Setup

The CardAccess 3000 **InstallShield Wizard** screen will display for a short period while CardAccess 3000 is preparing to install. After the CardAccess 3000 InstallShield wizard, the **Welcome to CardAccess 3000 setup program** screen displays (Refer to Figure 10).

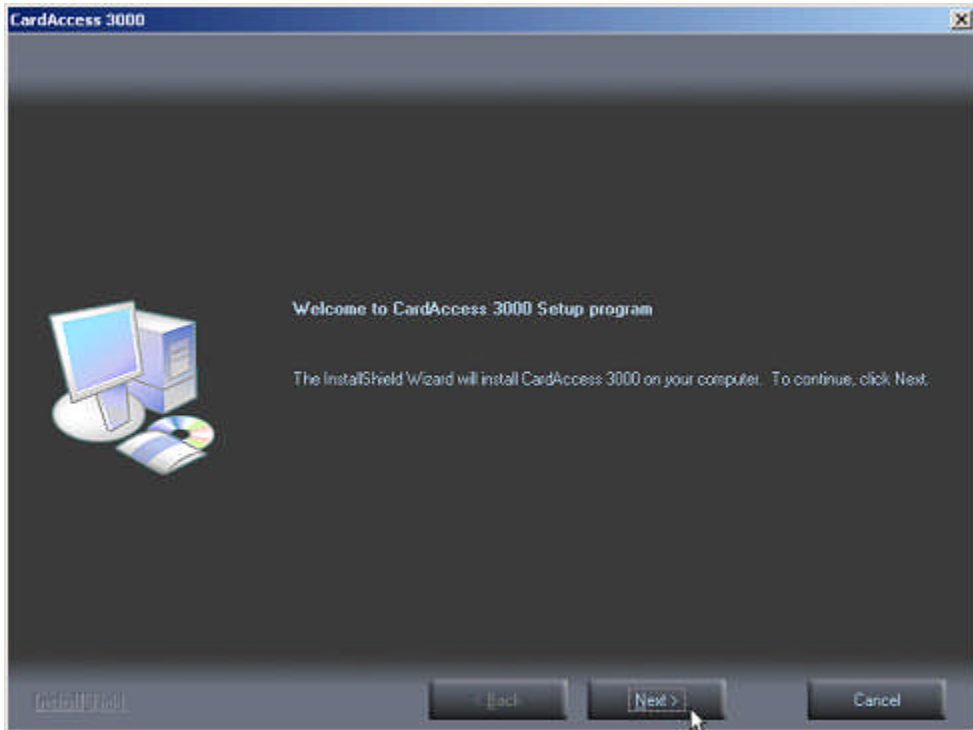


Figure 10.

Click **Next**. The **Select CardAccess Server Type** screen will display (Refer to Figure 11).

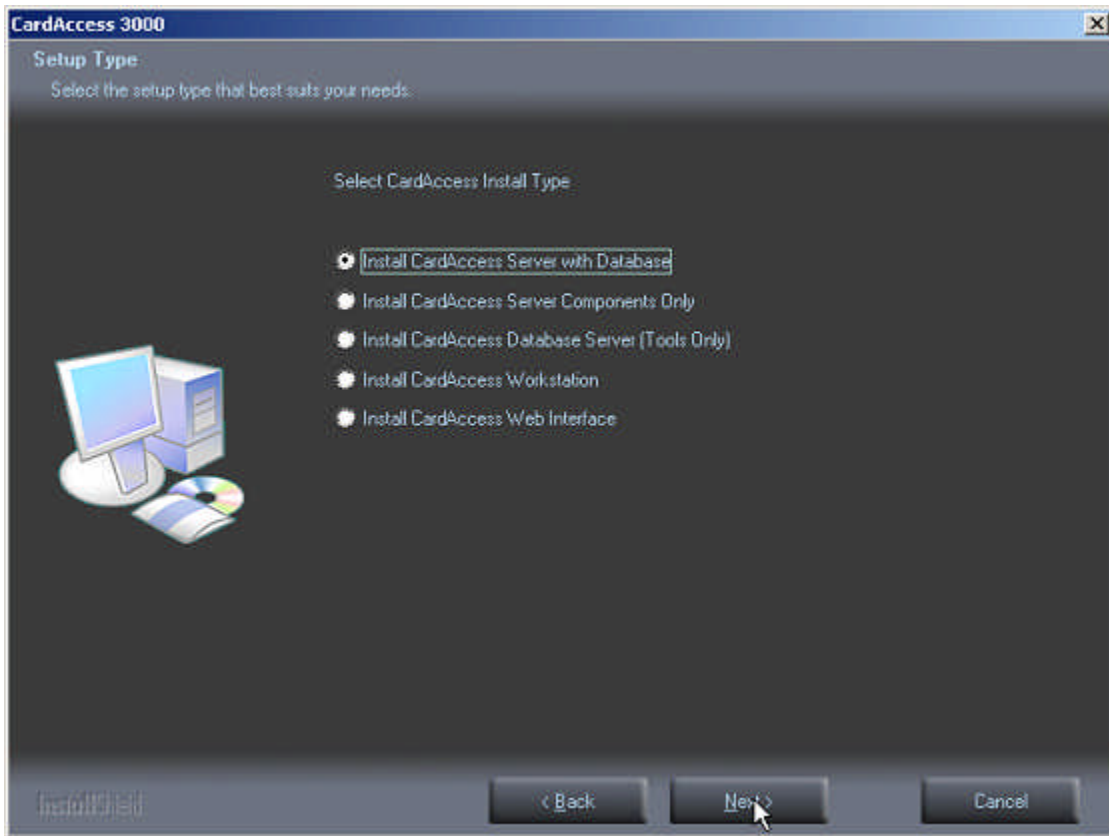


Figure 11.

Select the **Install CardAccess Server with Database** option (this option should be selected by default).

Click **Next**. The **Select CardAccess Destination Folder** screen will display (Refer to Figure 12).

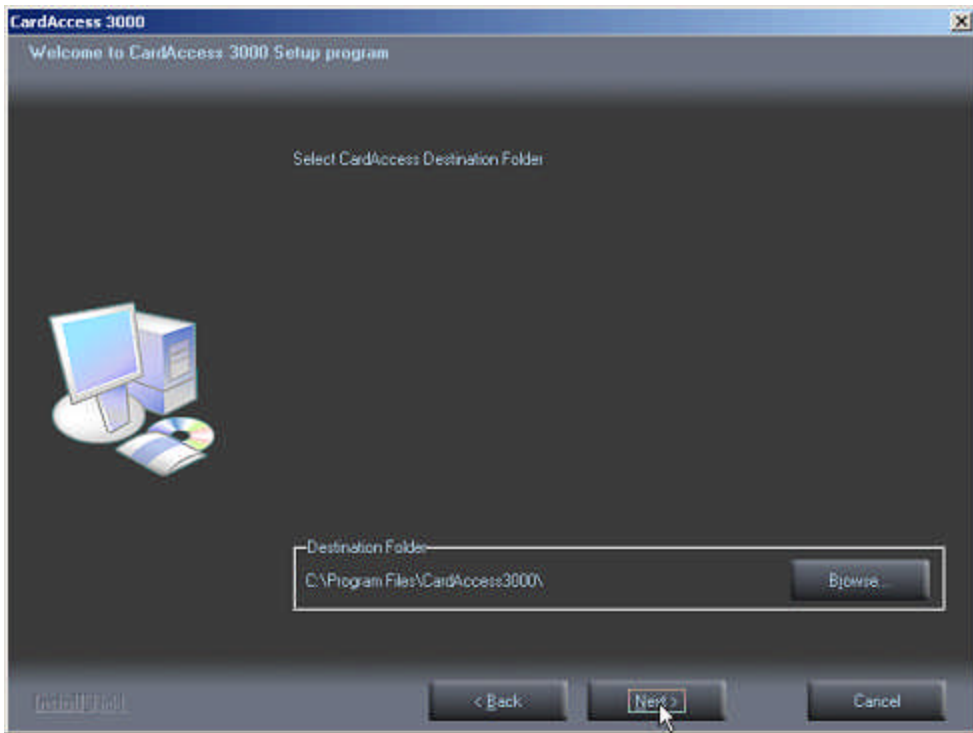


Figure 12.

The default path will display. If you are installing CardAccess 3000 to a different path, click the **Browse** button and select the path.

NOTE: CardAccess 3000 must be installed under a Program Files folder. It is highly recommended to use the default path.

Click **Next**. The **Select Additional CardAccess components** screen will display (Refer to Figure 13).

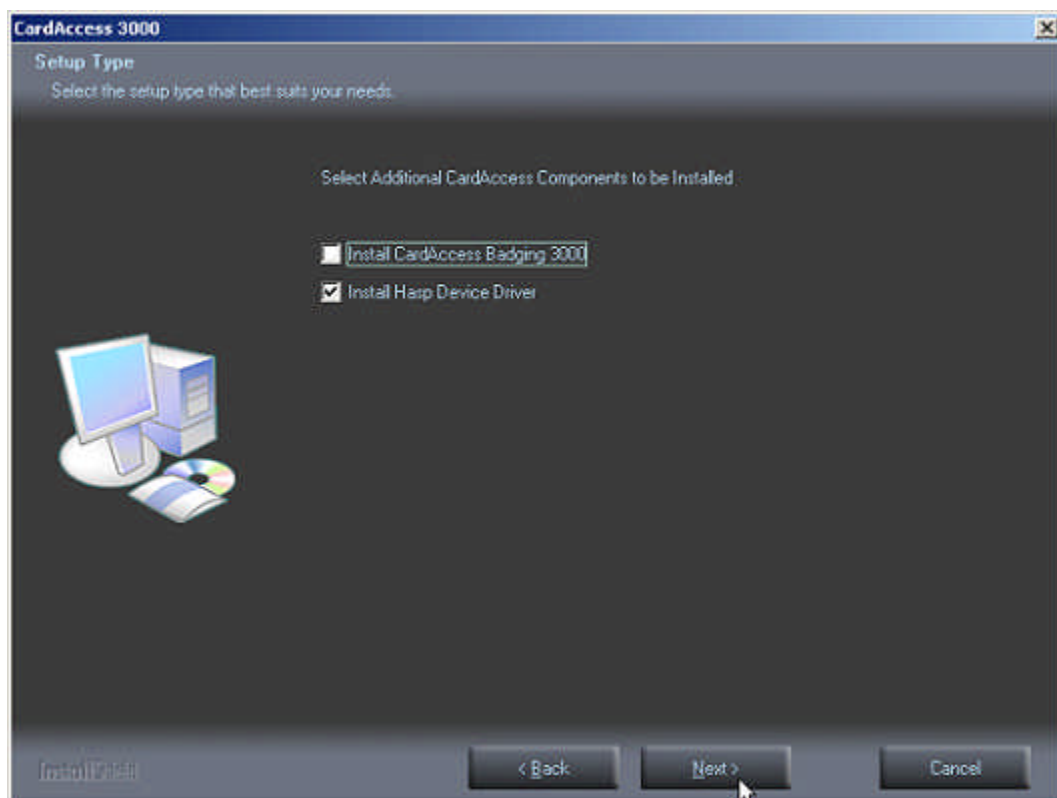


Figure 13.

By default, the **Install Hasp Device Driver** is the only option selected. It is not recommended to install the Badging3000 on a CardAccess 3000 server/host. It is recommended to install it on a CardAccess 3000 workstation.

Click **Next**. The **Current Settings** screen will display (Refer to Figure 14).

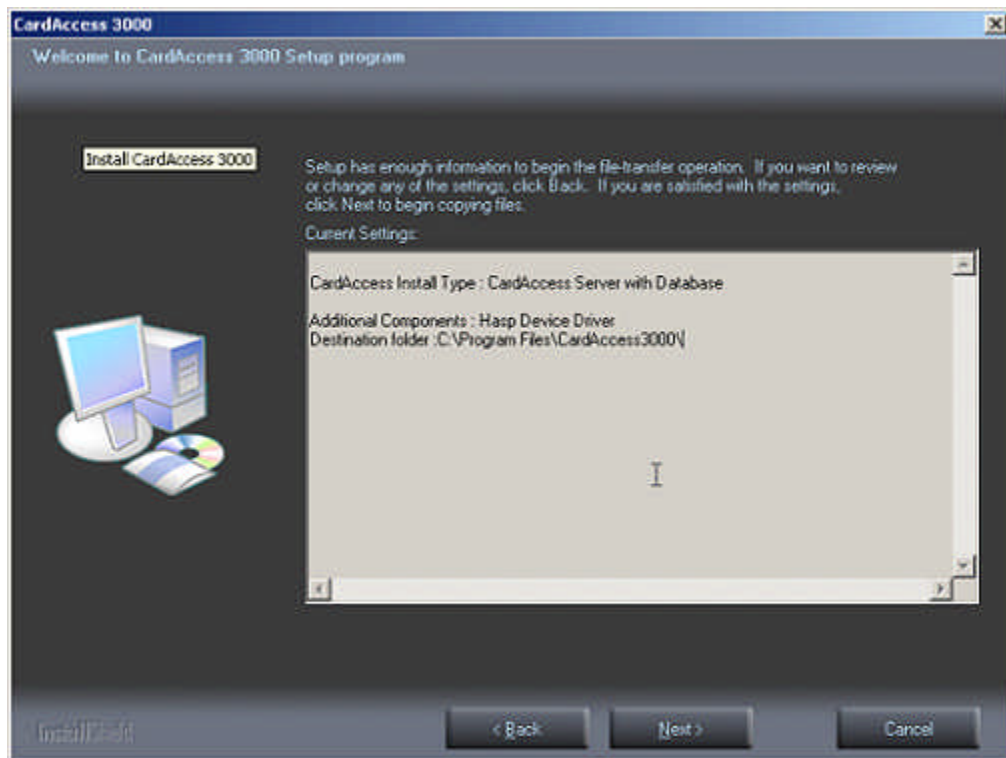


Figure 14.

After reviewing the current settings, click **Next**. A progress bar will display while the CardAccess 3000 is installing (Refer to Figure 15).

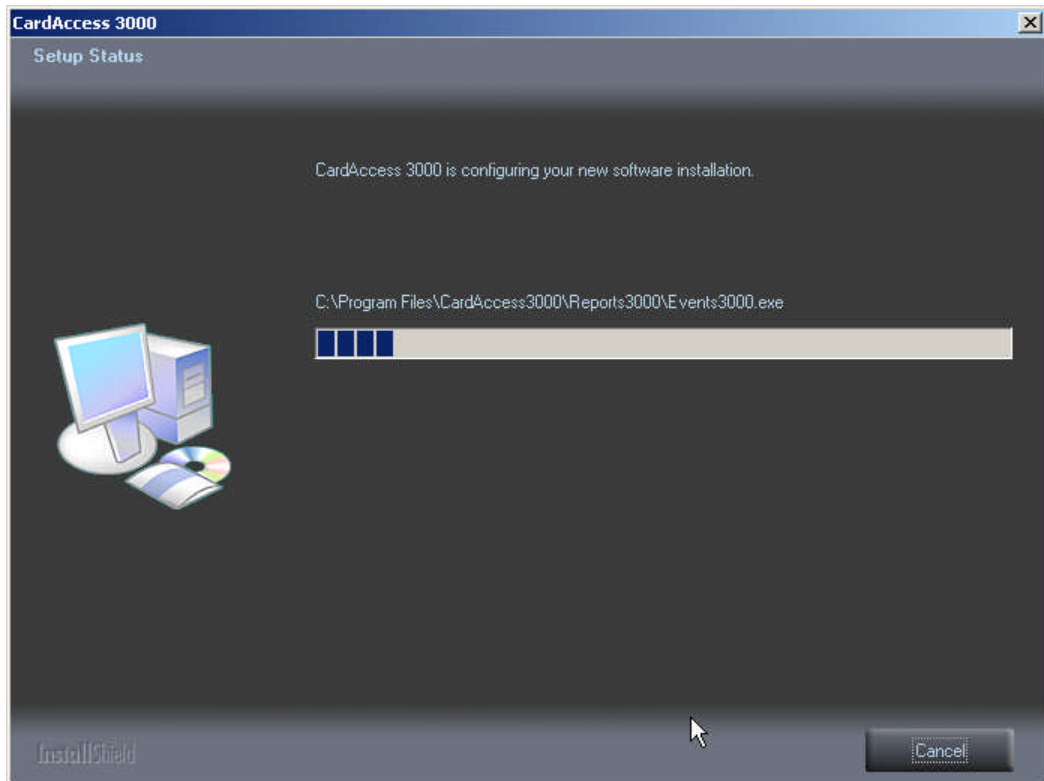


Figure 15.

After the completion of the CardAccess 3000 installation, the hasp driver will install (NOTE: Do not put the security key on until the computer reboots at the end of the installation).

SQL Express 2005 Installation

Note: The following steps will not occur if SQL 2005 already exists.

The SQL 2005 installation will automatically begin. The **Microsoft SQL Server 2005 Setup** screens will display (Refer to Figures 16, 17, 18 and 19).

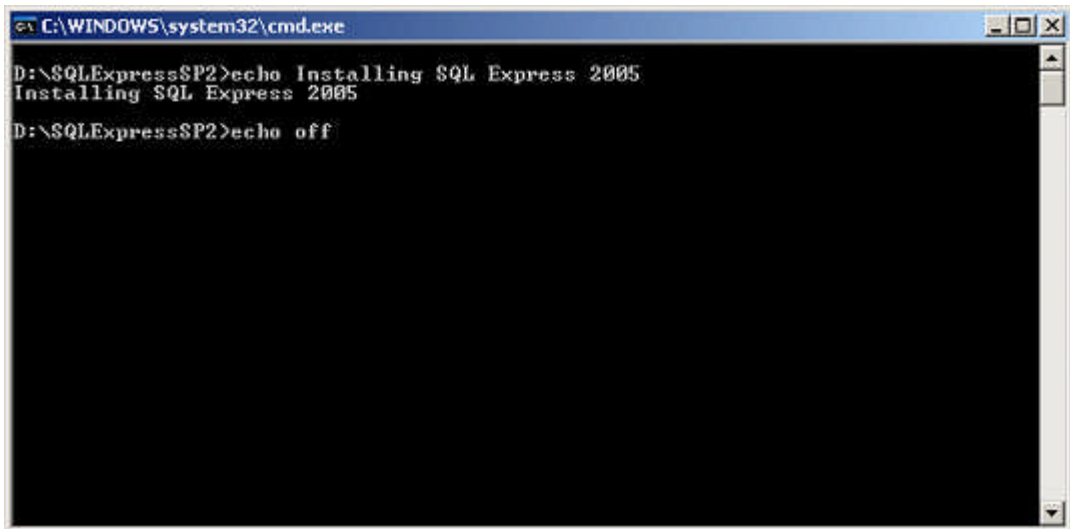


Figure 16.

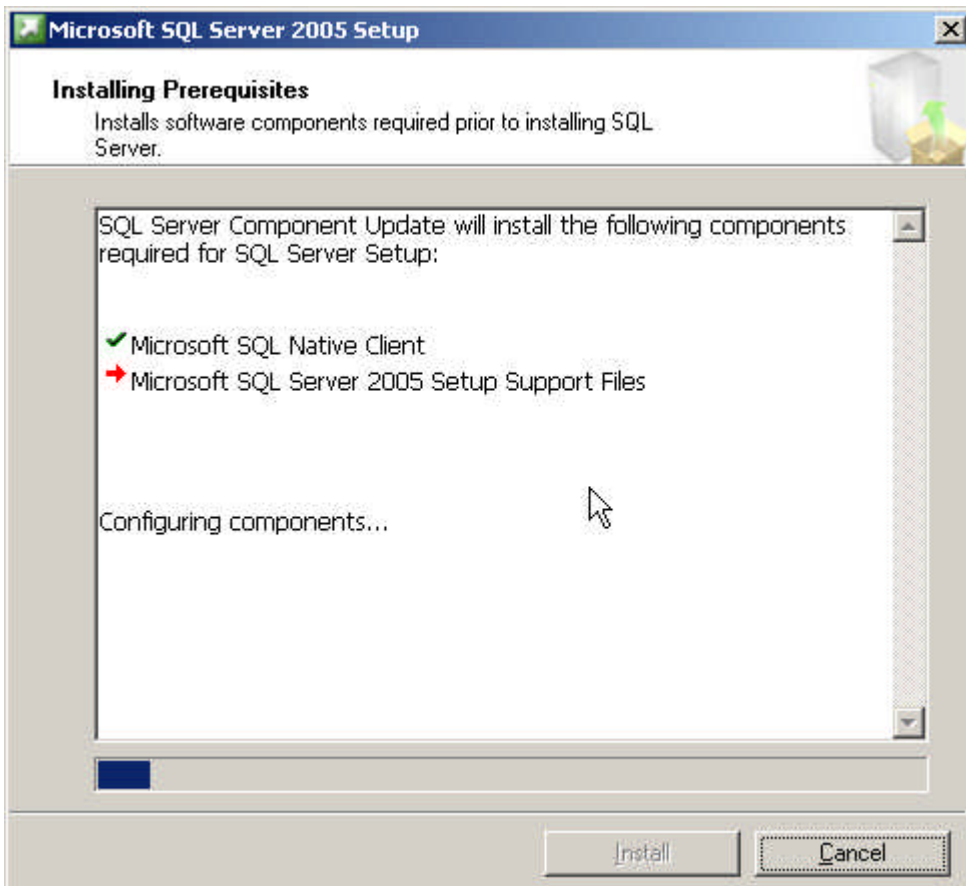


Figure 17.

NOTE: The **Checking System Configuration** screen will momentarily display (Refer to figure 18).

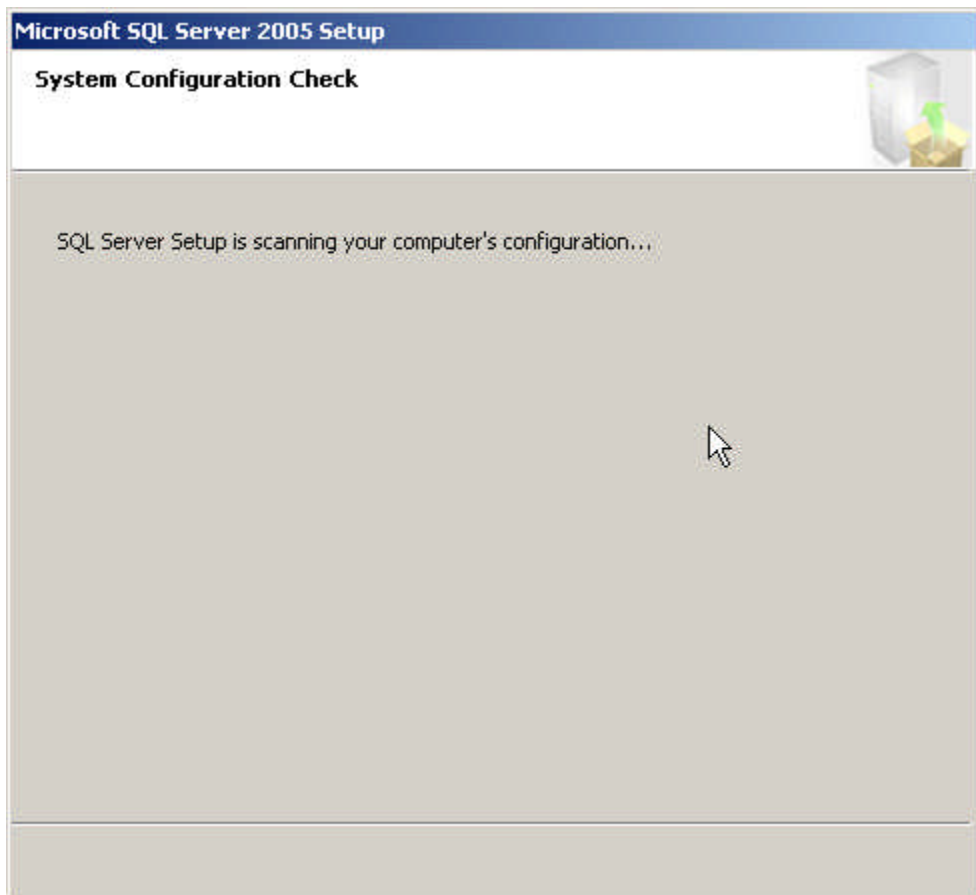


Figure 18.

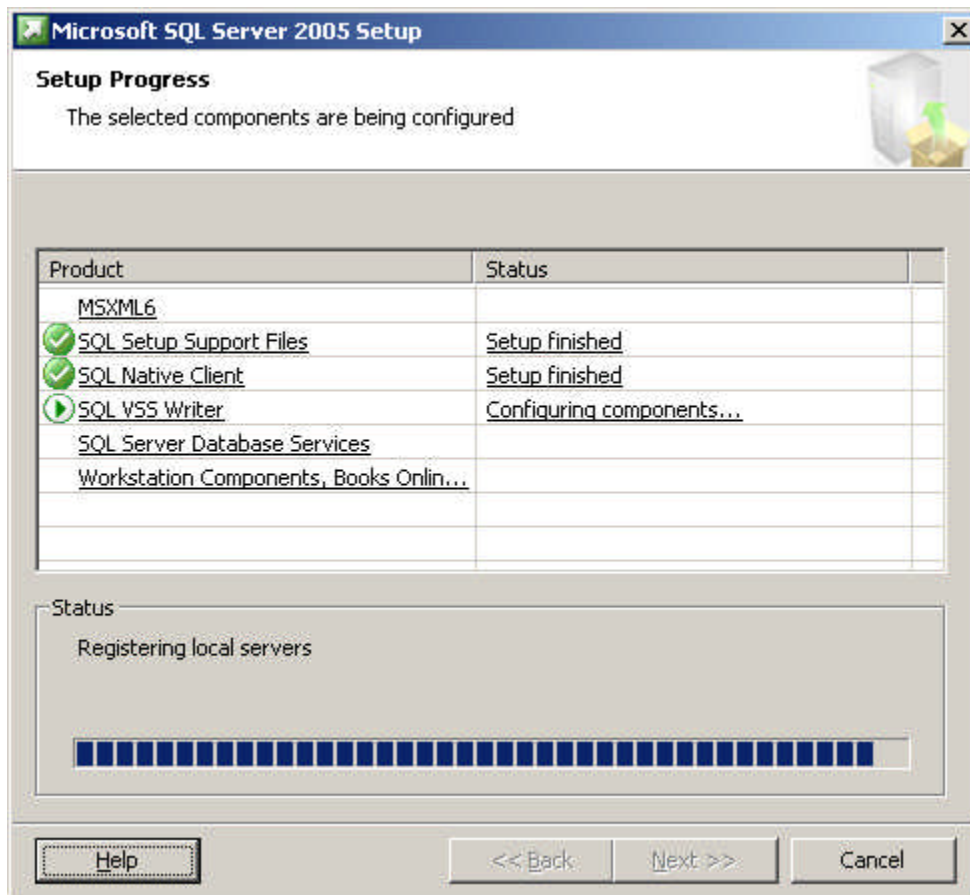


Figure 19.

At the completion of the SQL Express 2005 installation, the Automatic Database Creation screen will display (Refer to Figures 20 and 21).

Automatic Database Creation

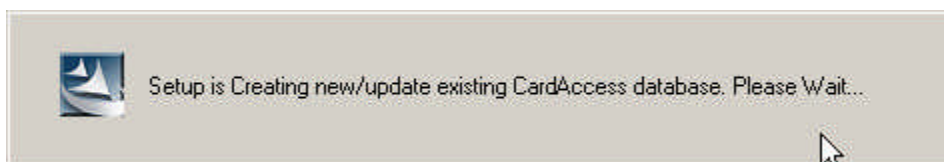


Figure 20.

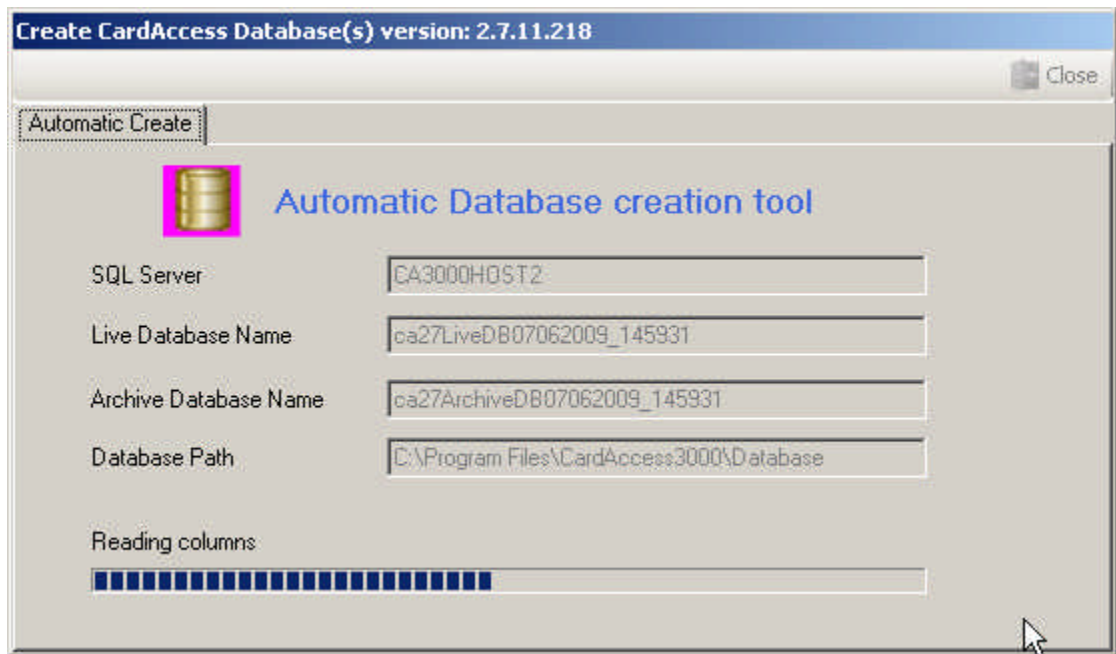


Figure 21.

This process will take a few minutes. A live and archive database will be created automatically.

At the completion of the **Automatic Database Creation**, the **Readme Information** screen will display. **VERY IMPORTANT:** It is very important to read the Readme information for important setup information and known issues (Refer to Figure 22).

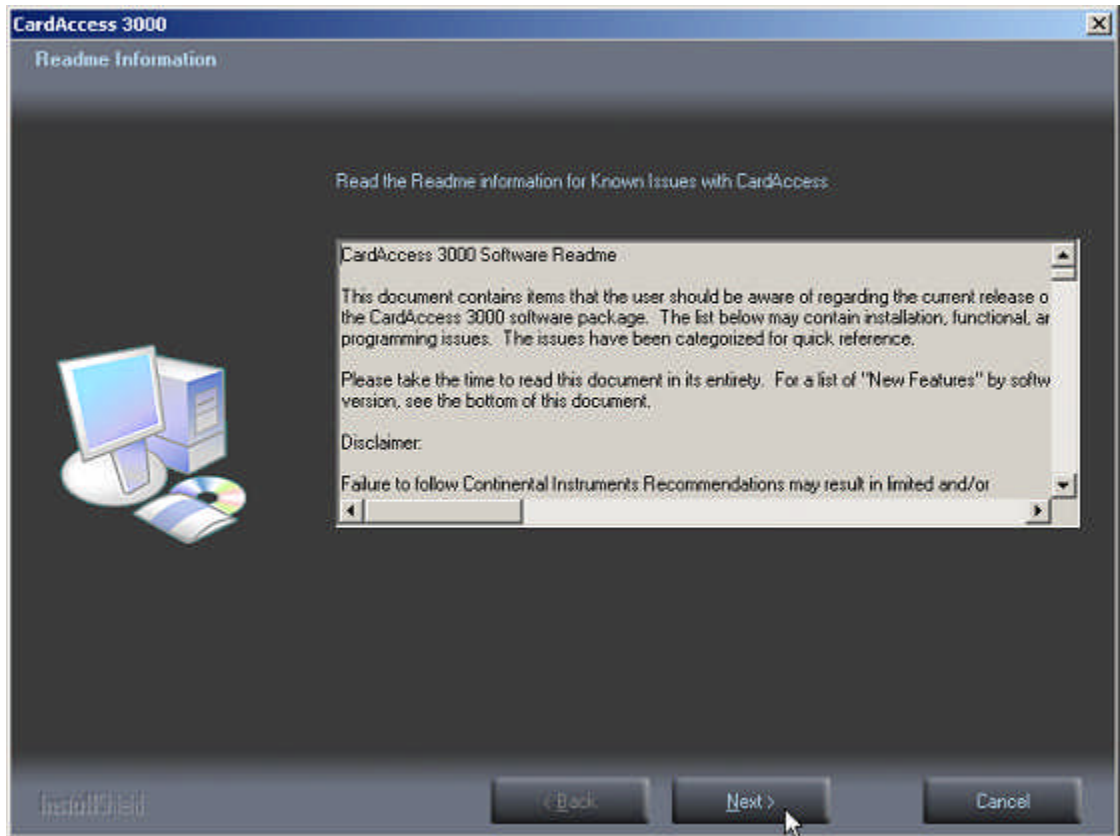


Figure 22.

After reviewing the Readme Information, Click **Next**. The **InstallShield Wizard Complete screen** will display (Refer to Figure 23).

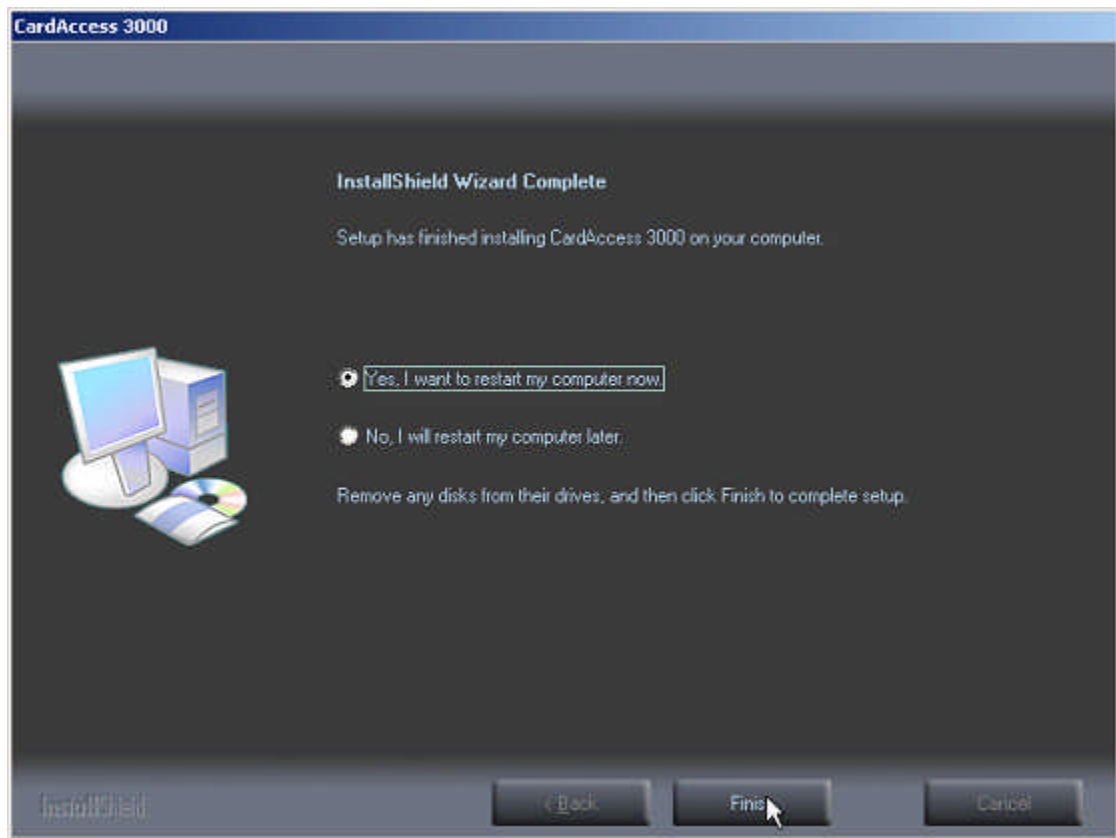


Figure 23.

Verify the **Yes, I want to restart my computer now** option is selected. This should be selected by default. Click **Finish**. The computer will restart.

After the computer reboots, the CardAccess 3000 license manager screen will display. If you purchased a physical USB security key, close this screen. If you were supplied a license number for software licensing, you will need to activate and register the software license now.

If you have a physical security key, you will need to install it before launching the CardAccess 3000 (after inserting the security key into the USB port, you should see a "New hardware has been detected" message display).

The CardAccess installation is now complete.