

Continental Access

A Napco Security Group Company



V2.6 Installation on a Database Server

Note: This document is to be used on V2.6.19B and later.

REVISION A

DATE: 06/26/2009

CardAccess® 3000 



CA3000 Software Installation Procedure

Continental Access and CardAccess3000 are registered trademarks of Napco Security Group
Microsoft® is a registered trademark of Microsoft Corporation.
Windows® is a registered trademark of Microsoft Corporation.
CardAccess® is a registered trademark of Napco Security Group

Document Title: Installation on a Database Server

This document contains proprietary information of Continental Access. Unauthorized reproduction of any portion of this manual without the written authorization of Continental Access is prohibited. The information in this manual is for informational purposes only. It is subject to change without notice. Companies, names and data used in examples herein are fictitious unless otherwise noted. Continental assumes no responsibility for incorrect information this manual may contain.

Continental Access
355 Bayview Avenue
Amityville, NY 11701
Phone (631) 842-9400
Fax (631) 842-9135

Web: <http://www.cicaccess.com>

License Agreement

NOTICE TO USER: THIS PACKAGE IS A CONTRACT. BY OPENING THIS SEALED PACKAGE YOU ACCEPT ALL THE TERMS AND CONDITIONS OF THIS AGREEMENT.

Use of the Software: You may install and use the software only for the purpose intended.

Copyright. You may not duplicate or copy the software or documentation, except that you may make one backup copy of the software. All copies must bear copyright notices contained in the original copy.

Limited warranty: Continental Access warrants that the software will perform substantially in accordance with the printed documentation when correctly installed on a properly configured computer for which it is intended. Continental Access warrants the discs upon which this product is recorded to be free from defects in materials and workmanship under normal use for a period of 1 year from the date of purchase. During the warranty period Continental Access will replace discs, which prove to be defective.

Important Information - Must be read before installing software.

- 1) The purpose of a Database Server is to have a dedicated computer with SQL2005 and the CA3000 databases residing on it. The CA3000 Server (Host) points to the Database Server to access the databases. If the system also includes a CardAccess 3000 workstation, you will need a total of 3 computers (Refer to appendix A).
- 2) This procedure is to be used on a new install or an upgrade from V2.6.19B or later. If you are upgrading from V2.5.16 or earlier, you must uninstall the previous version of CA3000 and SQL2000 prior to installing V2.6.19x. **VERY IMPORTANT:** Verify all CardAccess.esx and CardAccess.esf files are removed from the computer. Perform a search on all your drives to verify this.
- 3) The installation of a Database Server installation is accomplished using 1 CD (Disk 1 of 2).
- 4) The only version of SQL that is used on CA3000 V2.6.19B or later is SQL2005. Any other version of SQL is not supported and must be removed from the computer.
- 5) It is highly recommended to use the full version of SQL2005 on a Database Server and have it installed prior to performing the installation. If the full version of SQL2005 is not detected during the installation, SQLEXPRESS will be installed from the CA3000 CD.
- 6) The physical security key or the software license for CA3000 must be installed on the CA3000 Server (Host), not the Database Server.
- 7) Refer to the Server/Host computer specifications for the Database Server.
- 8) It is highly recommended to use a static IP address on a Database Server. Verify this before installing the CA3000 Database Server software. Contact the network administrator for your network to verify this.

- 9) Verify the drive path used to install this Database Server is identical to the drive path used to install the CardAccess 3000 on the Server.
- 10) The CA3000 uses a 3 character password for SQL 2005. Verify your security setting in Windows (Password must meet complexity requirements) is disabled. This setting must be disabled.
- 11) It is recommended to configure the CA3000 Database Server computer before configuring the CA3000 Server (Host) computer. As previously mentioned, you must configure the Database Utility settings on the CA3000 Server (Host) to point to the database on the Database Server (Refer to figure 20).

CA3000 Server/Host PC Recommendations

	Server (1-5 Workstations)	Server (6-20 Workstations)	Server (21-50 Workstations)
Processor	Pentium Core2 Duo, 1066MHz, 2.13GHz	Pentium Core2 Duo 2.4GHz or Xeon, Dual Core 1.6GHz	2 x Xeon, Dual Core, 1066MHz 1.6GHz
Ram	1.0 GB DDR2	1.5 GB Min (2 GB Recommended)	2GB Min (4GB Recommended)
Hard Drive	160 GB	250 GB	Raid 5 - 3 drives minimum
USB Ports	2 Min	2 Min	2 Min
Serial Ports	Optional - 1 expandable to 64	Optional - 1 expandable to 128	Optional - 1 expandable to 128
Parallel Ports	1	1	1
Mouse	2 Button PS2 / USB	2 Button PS2 / USB	2 Button PS2 / USB
Monitor	17" SVGA (1024x768)	17" Flat Panel	17" Flat Panel
CD/DVDR	48x/16x	48x/16x	48x/16x
CDRW/DVDR	24x/8x	24x/8x	24x/8x
Sound	Optional	Optional	Optional
Network Card	10/100 Mb NIC Ethernet	10/100/1000 Mb NIC Ethernet	10/100/1000 Mb NIC Ethernet
Operating System	Win XP Pro w/SP2 or Win 2003	Win XP Pro w/SP2 or Win 2003	Win XP Pro w/SP2 or Win 2003
Database	MSSQL 2005 Express or MSSQL Server 2005 for higher Performance	MSSQL Server 2005 recommended	MSSQL Server 2005
Backup	Tape / CD / DVD / Network	Tape / CD / DVD / Network	Tape / CD / DVD / Network
System Size	This is the recommended PC server specification for CA3000-1 through CA3000-5. It can be used for a stand-alone system, a workstation or a CA3000 Server. For high transaction environments some specifications may change.	This is the recommended PC specification for CA3000-10 through CA3000-20 with 6-20 workstations. For high transaction environments some specifications may change.	This is the recommended PC specification for CA3000-25 through CA3000-50. For high transaction environments some specifications may change. For large systems consult the factory.
Notes:	(1) If using MSDE, the database size cannot exceed 2GB (2) Disk drive size dependent on number of transactions kept in backup (3) Additional RAM will improve performance (4) Best to perform badging and other functions on a workstation (5) 100Mb min switched network recommended	(1) Disk drive size dependent on number of transactions kept in backup (2) Additional RAM will improve performance (3) Best to perform badging function on a workstation (4) 100 Mb min switched network recommended	(1) Disk drive size dependent on number of transactions kept in backup (2) Additional RAM will improve performance (3) Best to perform badging function on a workstation (4) 1000 MB min switched network recommended

***Note: Continental Access does not recommend running EPI Photo-badging, DVR interface, Napco Integration or Scripting on a Host machine. Please refer to our Workstation Recommendation sheet for these specifications. Virtual machines along with 64 bit computers are not supported.

Scope

This document contains information regarding the installation of a CA3000 V2.6.19B or later Database Server. The Database Server installs all the required files and utilities to create and maintain databases. Refer to Appendix A for a configuration diagram.

InstallShield Wizard

If auto start is enabled on your system, the **CardAccess3000 Version 2.6 Setup** screen will display after inserting the CA3000 CD in the CD-ROM drive (Refer to Figure 2). If Figure 2 displays, skip ahead to the steps following Figure 2. If nothing happens after inserting the CA3000 CD in the CD-ROM, continue with the next steps.

Note: If auto start is not enabled on your system, follow the steps below to execute the program.

- a. Click the **Start** menu on your PC, and then click on the **Run** menu option. You will see the 'Run' dialog box.
- b. In the 'Run' dialog box, click the white space of the **open** control, and type in **D:\bin\launch.exe** (Refer to Figure 1).

Note: D represents CD-ROM drive letter. This letter will be different depending on the drive letter of your CD-ROM.

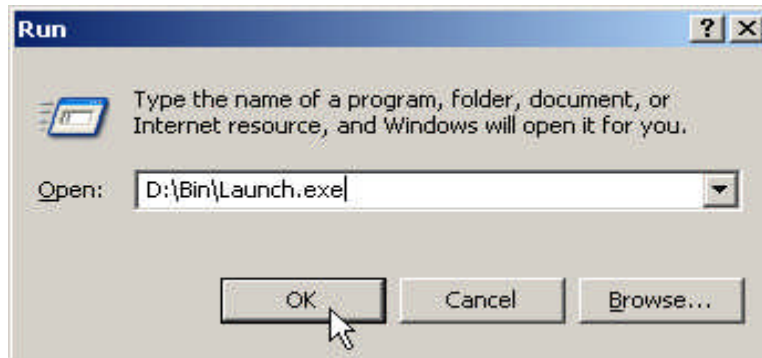


Figure 1.

Click on **OK** in the 'Run' dialog (Refer to figure 1). The **CardAccess3000 Version 2.6 setup** screen will display (Refer to Figure 2).



Figure 2.

Click on the **Install CardAccess Server** button.

Language Selection

The next screen to display is the **language selection** screen (Refer to Figure 3).

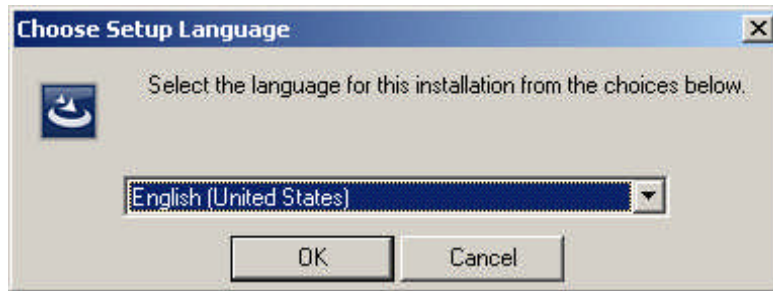


Figure 3.

Select the correct language and click **OK**.

Microsoft .NET Framework Installation

The installation of CardAccess3000 requires Microsoft .NET Framework 3.0. If this is not previously installed, the CA3000 installation process will install it (Refer to figure 4 and 5).

If "Microsoft .NET Framework 3.0" is already installed on the computer, the installation process will skip to the **CardAccess3000 setup** (figures 6 and 7).

NOTE: The .NET Framework 3.0 installation screens might vary slightly depending on the operating system you are using.

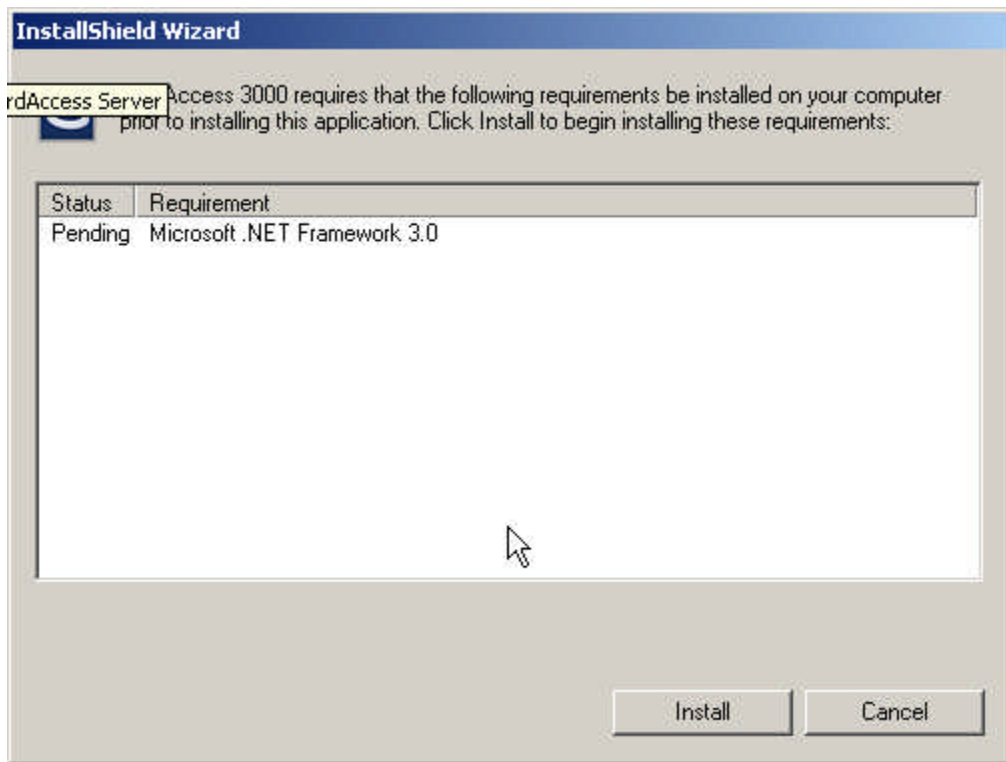


Figure 4.

Click **Install** to begin the installation of the .NET Framework 3.0 (Refer to figure 4). During the installation process, the “Status” text in Figure 4 will change from “Pending”, “Extracting” and “Installing” as the installation progresses.



Figure 5.

A progress bar will display during the installation of the Microsoft .NET Framework 3.0 (Refer to Figure 5).

CardAccess 3000 Setup

At the completion of the .NET Framework 3.0, the CardAccess 3000 **InstallShield Wizard** screen will display for a short period while CardAccess 3000 is preparing to install (Refer to Figure 6).

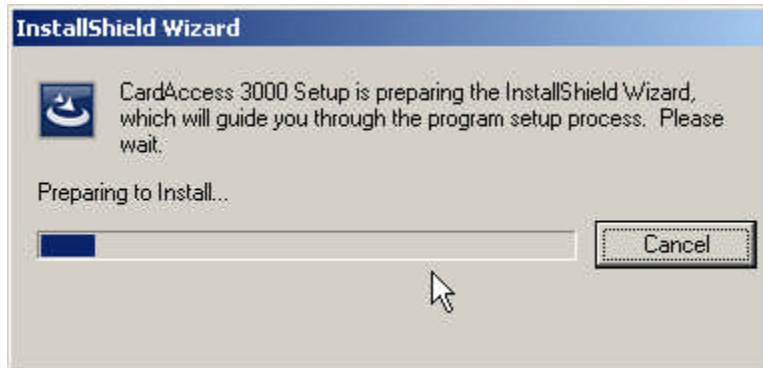


Figure 6.

After the completion of the CardAccess 3000 InstallShield wizard, the **Welcome to CardAccess 3000 setup program** screen displays (Refer to Figure 7).

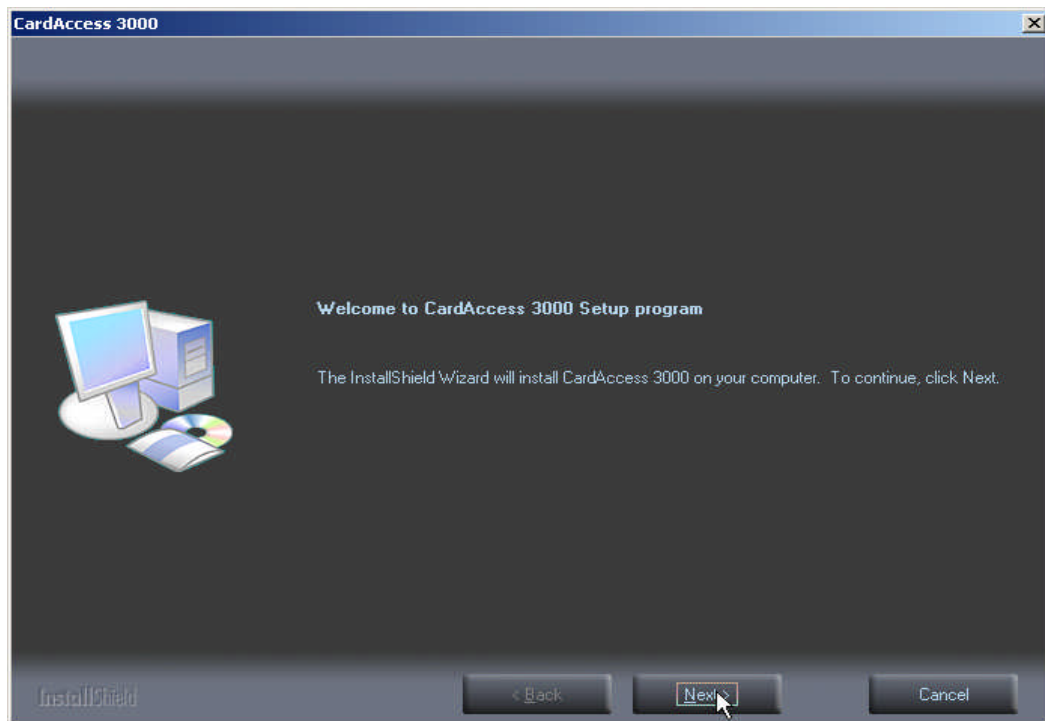


Figure 7.

Click **Next**. The **Select CardAccess Server Type** screen will display (Refer to Figure 8).

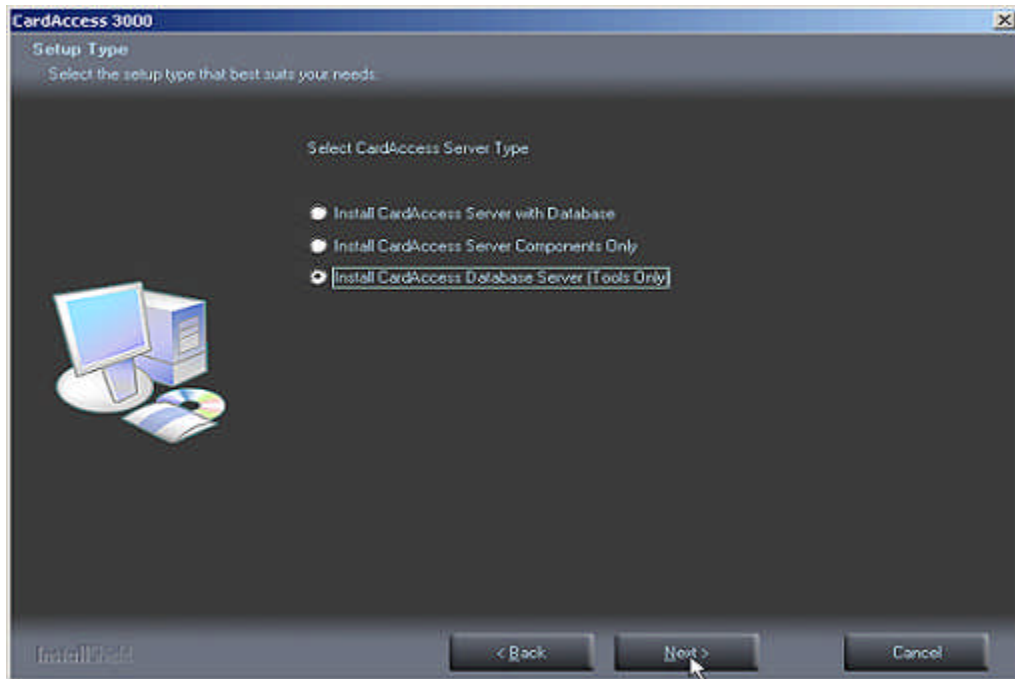


Figure 8.

Select the **Install CardAccess Database Server (Tools Only)** option.

Click **Next**. You will be prompted with the following question (Refer to Figure 9).

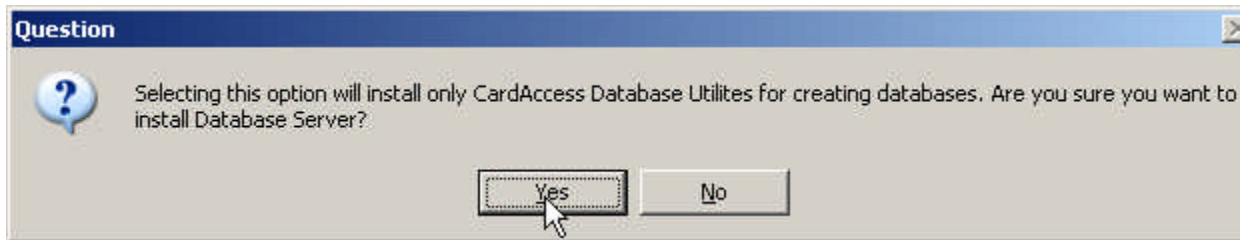


Figure 9.

Click **Yes**. You will be prompted with the following information (Refer to Figure 10).



Figure 10.

Click **OK**. The **Select CardAccess Destination Folder** screen will display (Refer to Figure 11).

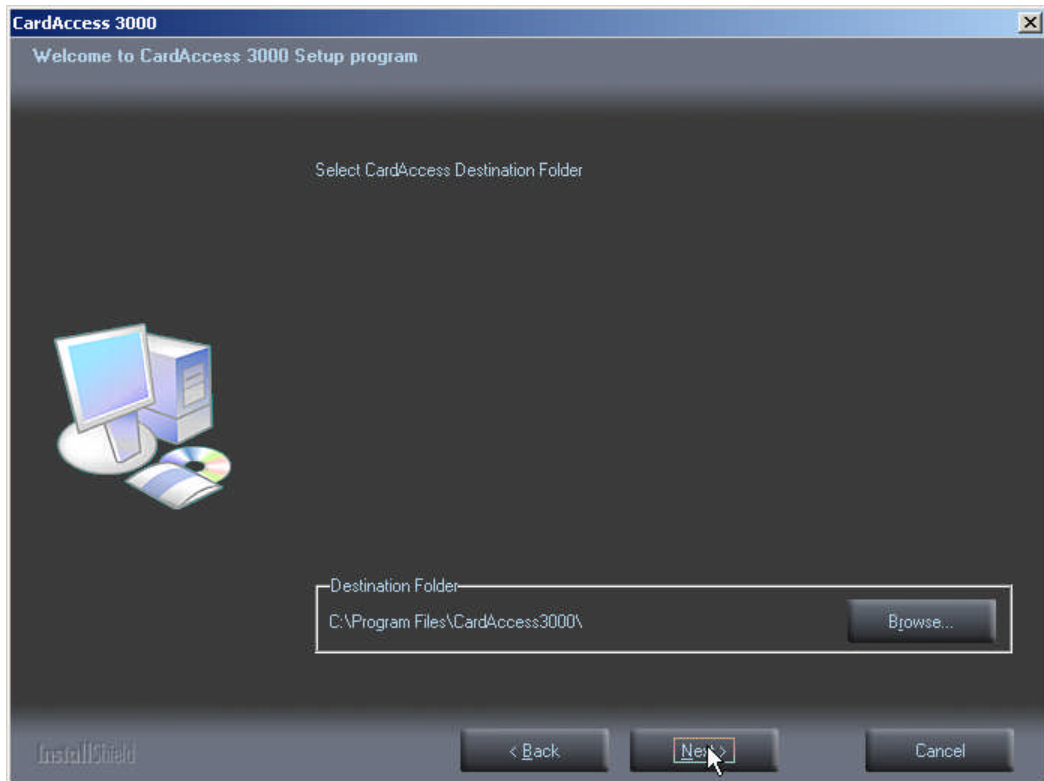


Figure 11.

The default path will display. If you are installing CardAccess 3000 to a different path, click the **Browse** button and select the path.

NOTE: CardAccess 3000 must be installed under a Program Files folder. It is highly recommended to use the default path.

Click **Next**. The **Current Settings** screen will display (Refer to Figure 12).

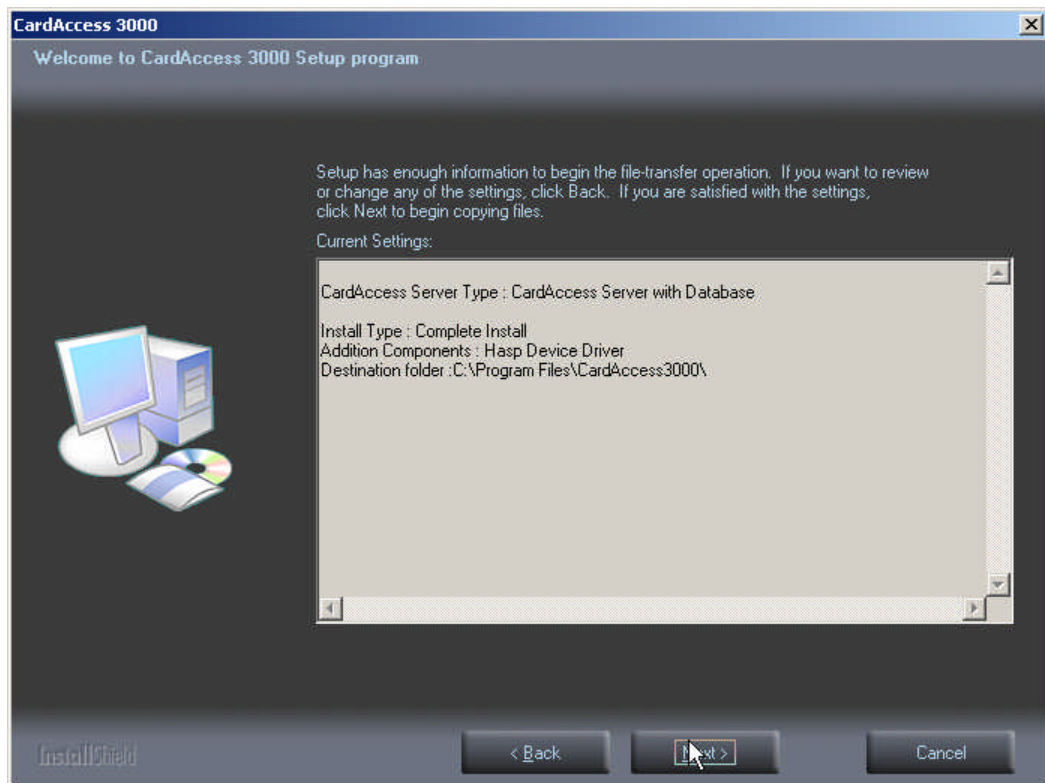


Figure 12

After reviewing the current settings, click **Next**. A progress bar will display while the CardAccess 3000 is installing (Refer to Figure 13).

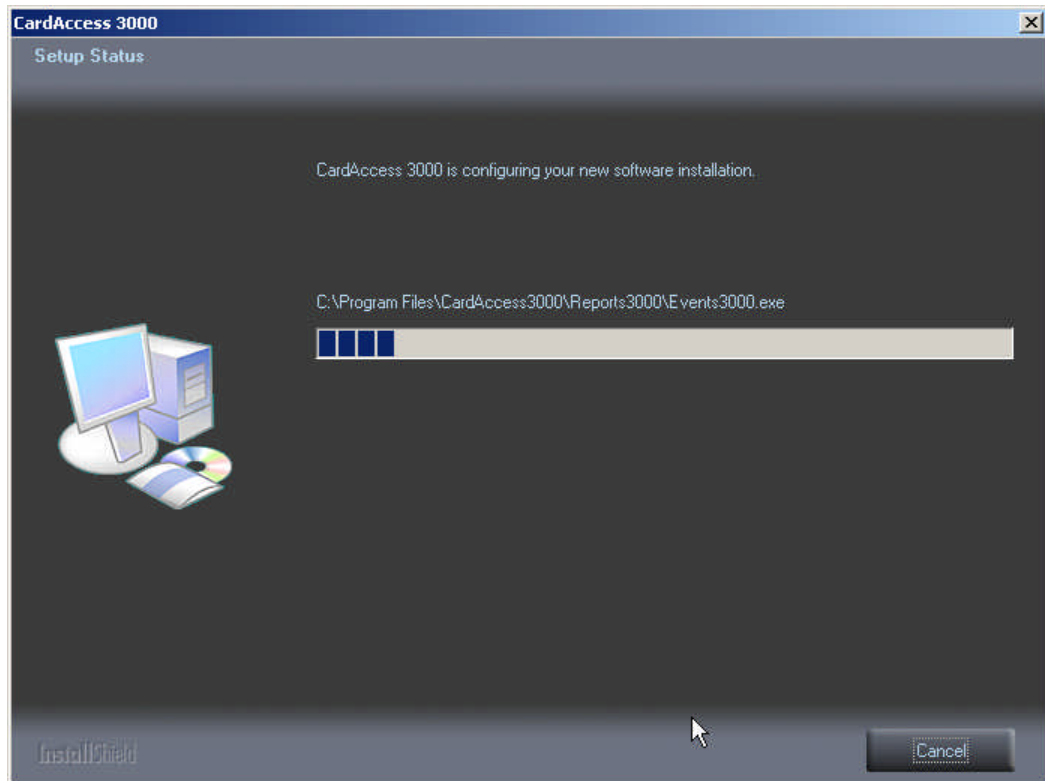


Figure 13

VERY IMPORTANT: As previously noted, it is highly recommended to have the full version of SQL 2005 pre-installed. The installation will check for a previously installed version of SQL 2005.

If a version of SQL 2005 is not detected, this installation will install SQL Express 2005. Refer to “**SQL Express 2005 Installation**” in the following steps.

If a version of SQL 2005 is detected, the installation process will skip to “**AUTOMATIC DATABASE CREATION**” (Refer to figure 17).

SQL Express 2005 Installation

Note: The following steps will not occur if SQL 2005 already exists.

The SQL 2005 installation will start automatically. The **Microsoft SQL Server 2005 Setup** screens will display (Refer to Figure 14, 15 and 16). During the installation process, the text in Figure 14 will be updated.

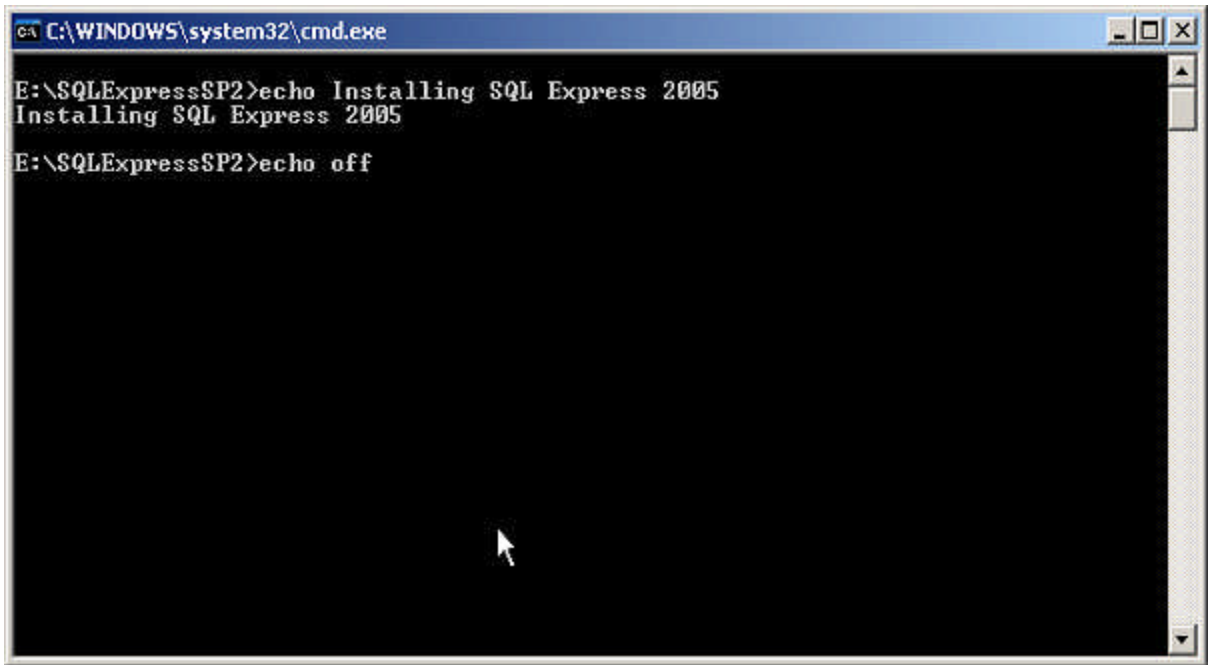


Figure 14.

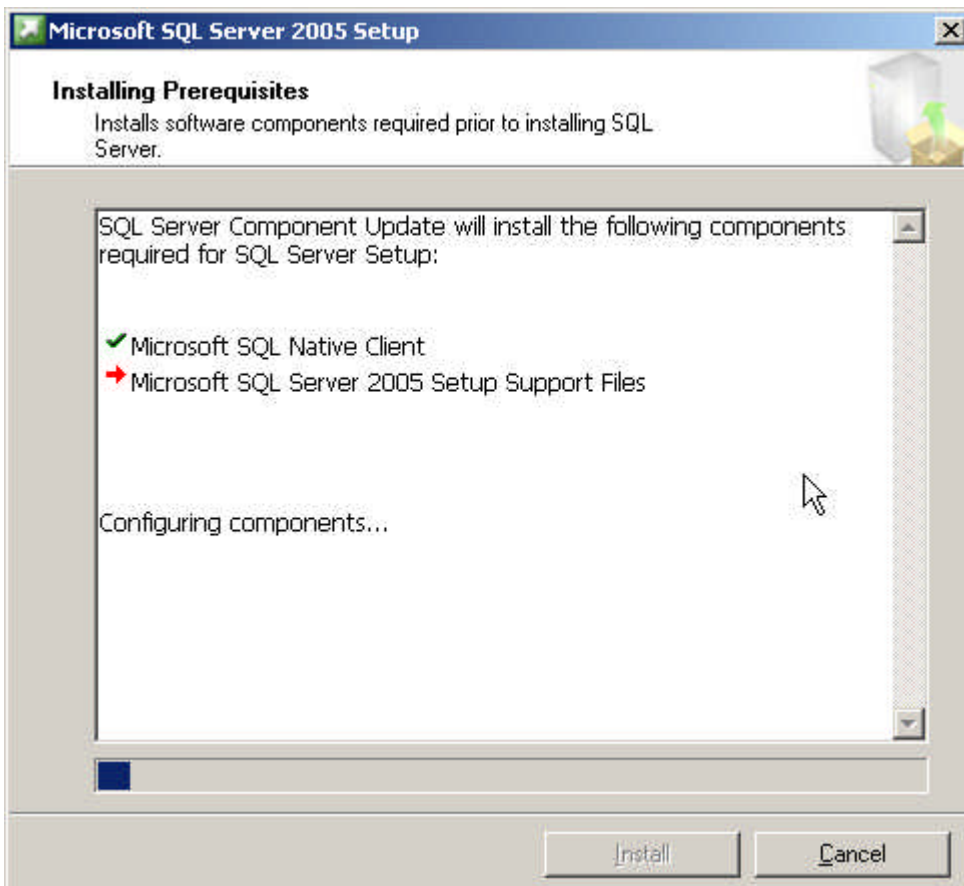


Figure 15.

NOTE: A **Checking System Configuration** screen will momentarily display.

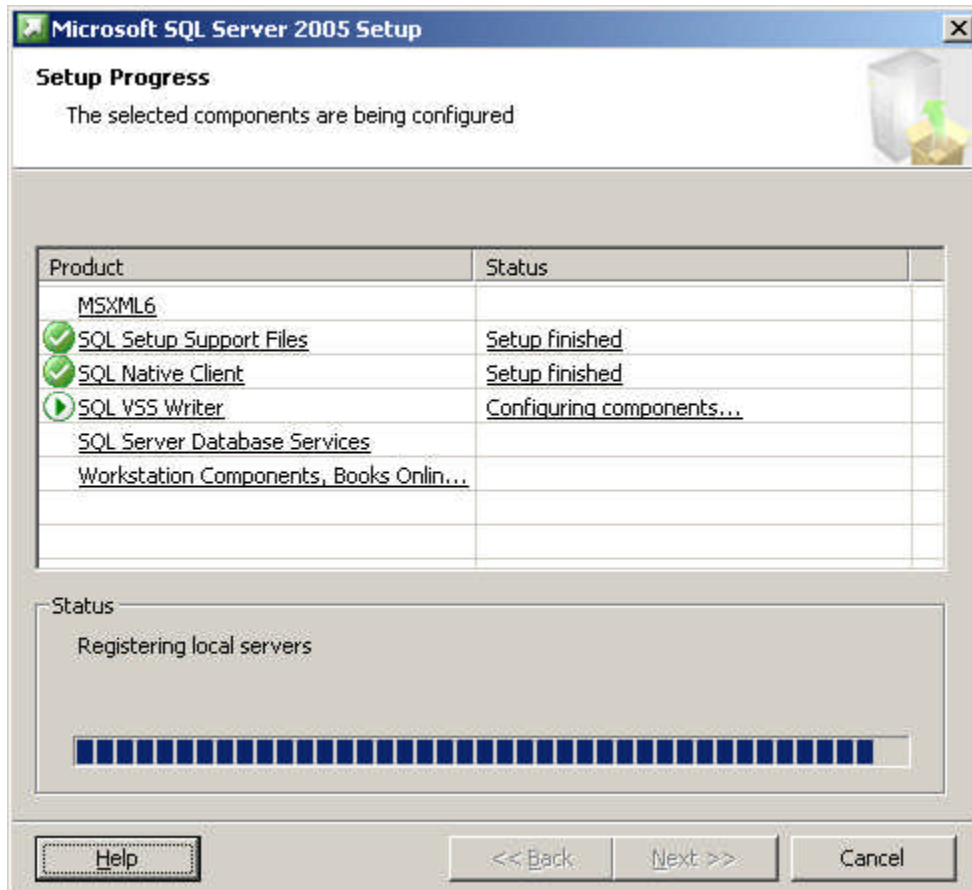


Figure 16.

At the completion of the SQL Express 2005 installation, the Automatic Database Creation screen will display (Refer to Figure 17).

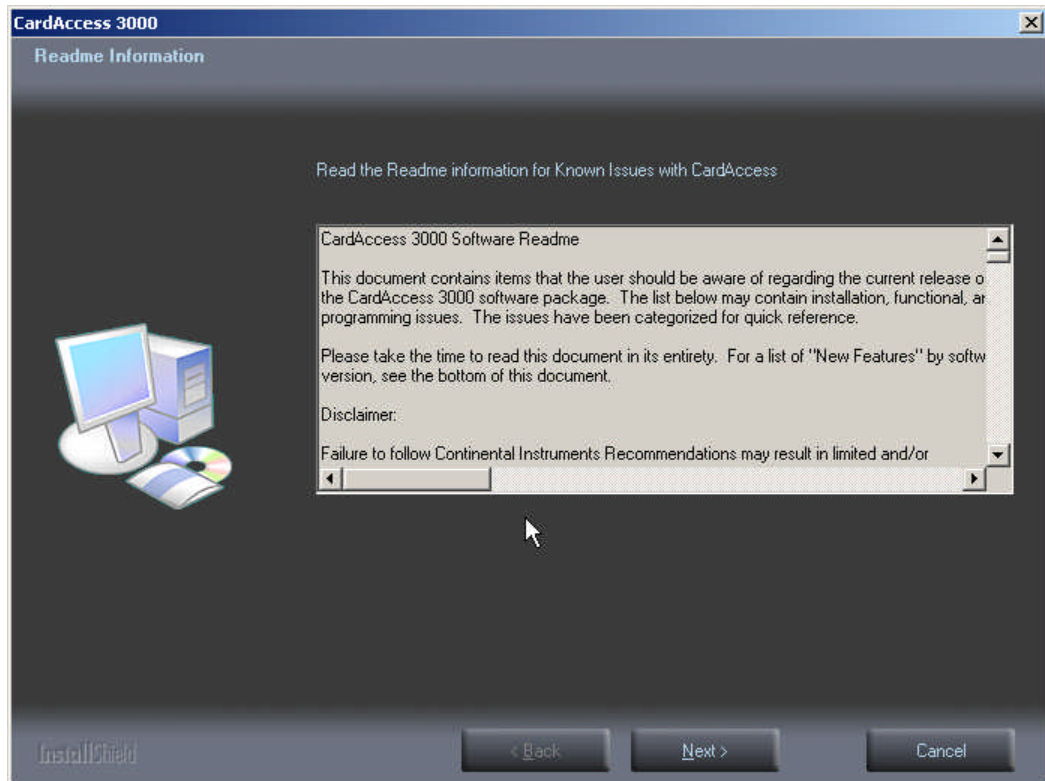


Figure 18.

After reviewing the Readme Information, Click **Next**. The **InstallShield Wizard Complete screen** will display (Refer to Figure 19).

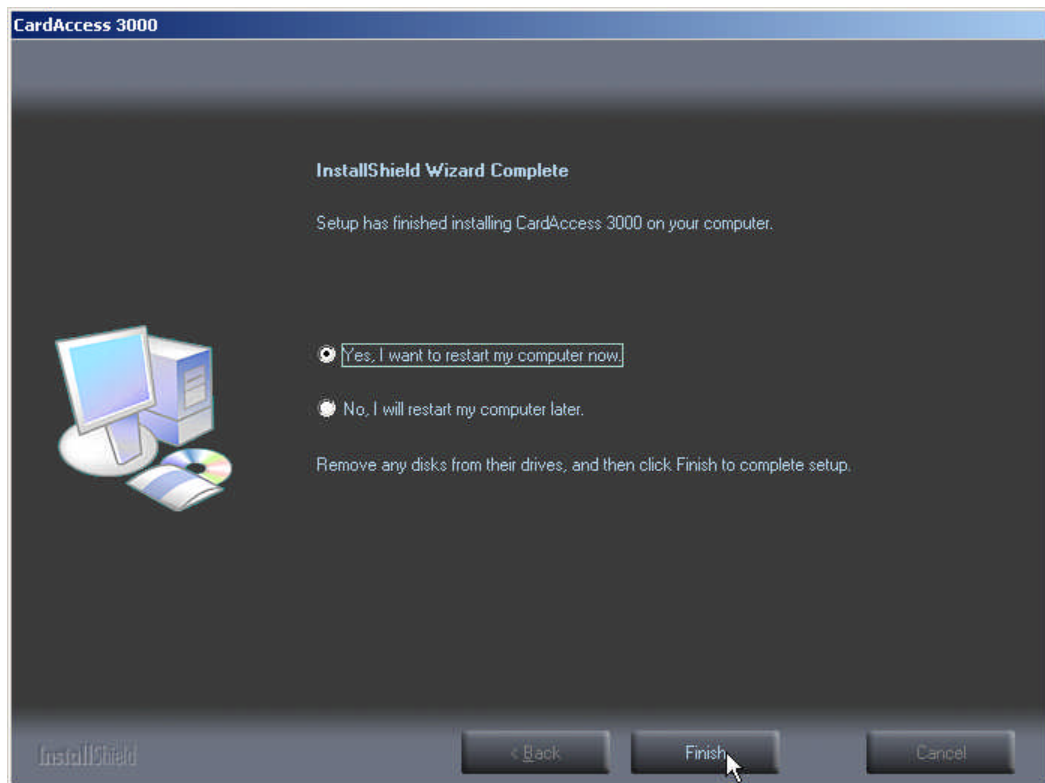


Figure 19.

Verify the **Yes, I want to restart my computer now** option is selected. This should be selected by default. Click **Finish**. The computer will restart.

After the computer reboots, the CardAccess 3000 license manager screen will display. If you purchased a physical USB security key, close this screen. If you were supplied a license number for software licensing, you will need to enter the number, activate and register the software license now.

If you have a physical security key, you will need to install it before launching the CardAccess 3000 (after inserting the security key into the USB port, you should see a “New hardware has been detected” message display).

The CardAccess 3000 Database Server installation is now complete.

VERY IMPORTANT:

The Database Server requires no configuration of the database utilities.

You **MUST** configure the database utility on the CA3000 Server (Host) to point to the database on the Database Server (Refer to figure 20).

Refer to the following setting explanations for the CA3000 Server (Host).

REMINDER: FIGURE 19 IS A SCREEN SHOT OF THE DATABASE UTILITY ON THE CA3000 SERVER (HOST).

SQL SERVER = Name of the Database Server.

SQL Database = Name of the live database on the Database Server

CICDataServer = IP address of the CA3000 Server (Host) or the loopback address (127.0.0.1.) **VERY IMPORTANT:** Verify this address is not pointing to the Database Server IP address.

CICDataServer Port = 9000.

Network Station ID = Host PC

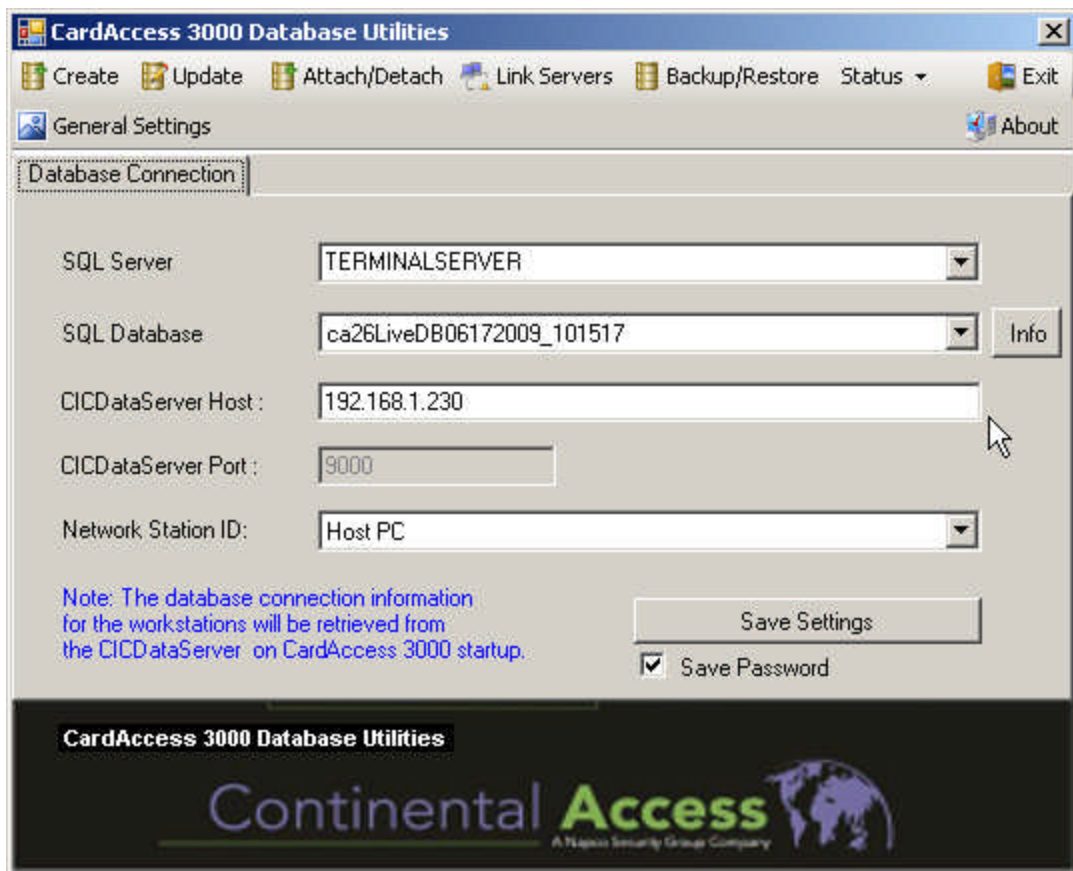


Figure 20.

APPENDIX A

CA3000 Host, Workstation and Database Server configuration

