

INSTALLATION ON A WORKSTATION

Continental **Access**
A Napco Security Group Company



DATE: 6/1/2005

SOFTWARE VERSION AND BUILD:

VERSION 2.2 AND HIGHER

DOCUMENT PERTAINS TO: PROGRAMMING

CardAccess® 3000 



Installation on a Workstation

Installation on a Workstation

CONTINENTAL INSTRUMENTS, LLC
345 BAYVIEW DRIVE
AMITYVILLE, NY 11701
(631) 842-9400

Scope

This document deals with the installation of CA 3000 software Version 2.2 and higher, on a Workstation PC.

The installation involves a couple of screens. You need to make choices and click buttons in the screens, during the installation process. The screens you will encounter during the process are discussed below.

InstallShield Wizard

If auto start is enabled on your system, the **InstallShield Wizard** splash screen (see figure 2.1 below) appears for a brief period of time, after you insert the CA 3000 CD in the CD-ROM drive.

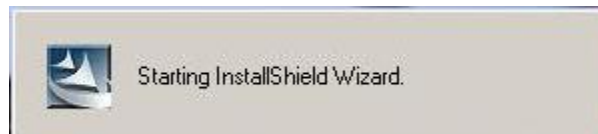


Fig. 2.1. InstallShield Wizard Splash Screen.

In the next screen, you can select the language you wish to use (see figure 2.3 and 2.4 below) during the installation process.

Note: If auto start is not enabled on your system, follow the steps below to be able to see figure 2.1.

- a. Click the **Start** menu on your PC, and then click on **Run** menu option. You will see the 'Run' dialog box.
- b. In the 'Run' dialog box, click the white space of the **open** control, and type in **D:\Setup**.

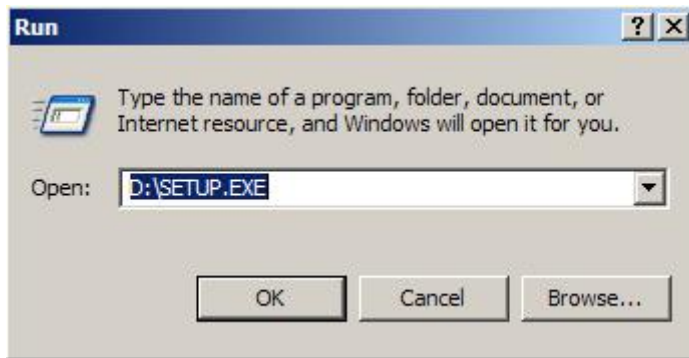


Fig. 2.2. Typing the required command in 'Run' dialog box.

Note: **D** represents the CD-ROM drive letter. This letter can be different for different systems. Make sure to type in the correct drive letter of your system.

- c. Click on **OK** button in the 'Run' dialog box.

The next screen is the language selection screen.

Language Selection

The default language selected for CardAccess installation is English.



Fig. 2.3. Language selection screen showing the default language selected.

But, you have the privilege of using a couple of other languages, if desired. Click the down arrow to the right of the drop down box in the 'Choose Setup Language' dialog (figure 2.3) to see what other languages are supported.



Fig. 2.4. Other languages supported.

To change over to another language, click on that particular language option, and then click on **Ok** button in the 'Choose Setup Language' dialog box (figure 2.3).

Next, you will see the CardAccess 3000 splash screen as shown below, along with the InstallShield Wizard progress bar.



Fig. 2.5. CardAccess 3000 Splash Screen.

The next screen is the Welcome screen.

Welcome Screen

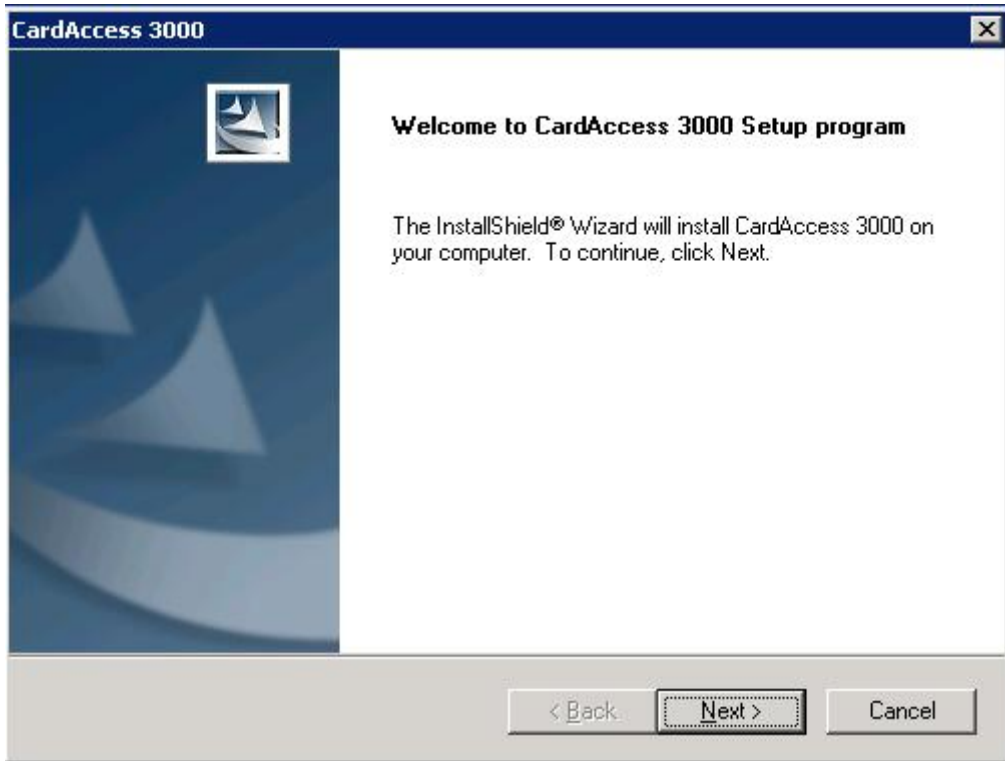


Fig. 2.6. The Welcome Screen.

Click on **Next** button in the Welcome screen to continue.

The next screen gives options for selecting the CA station type.

CardAccess Station Type

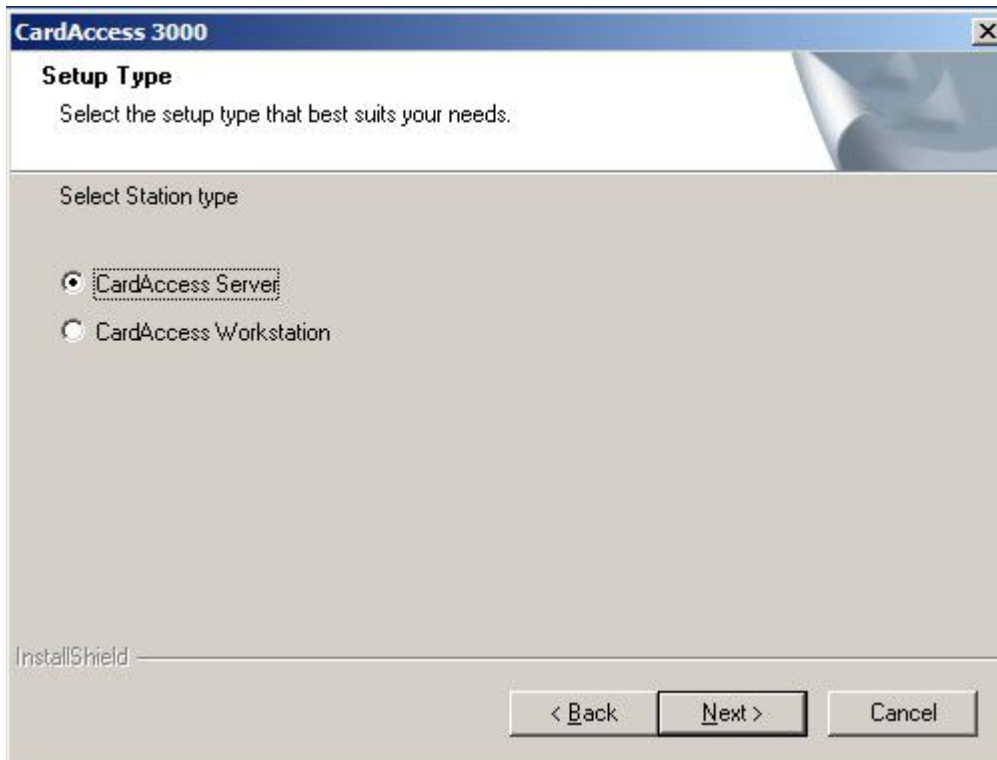


Fig. 2.7. Choosing a station type.

The following are the two station types available:

CardAccess Server: Selecting this option will install all the files required to run the current system as a CardAccess server (Host PC).

CardAccess Workstation: Selecting this option will install all the files required to run the current system as a CardAccess workstation.

The default station type selected is CardAccess Server.

The default selection can be changed if desired.

In the figure below, we have changed the default station type by selecting the option CardAccess Workstation.

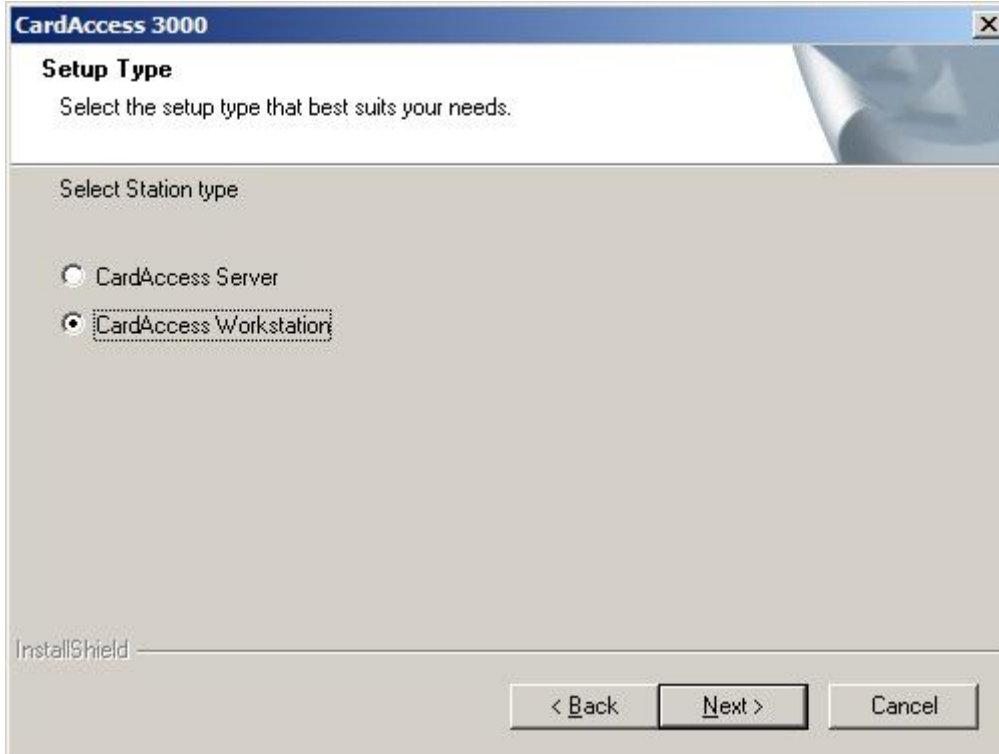


Fig. 2.8. Changing the default station type by selecting 'CardAccess Workstation' option.

Click on **Next** button to proceed to installation type selection.

Type of Installation

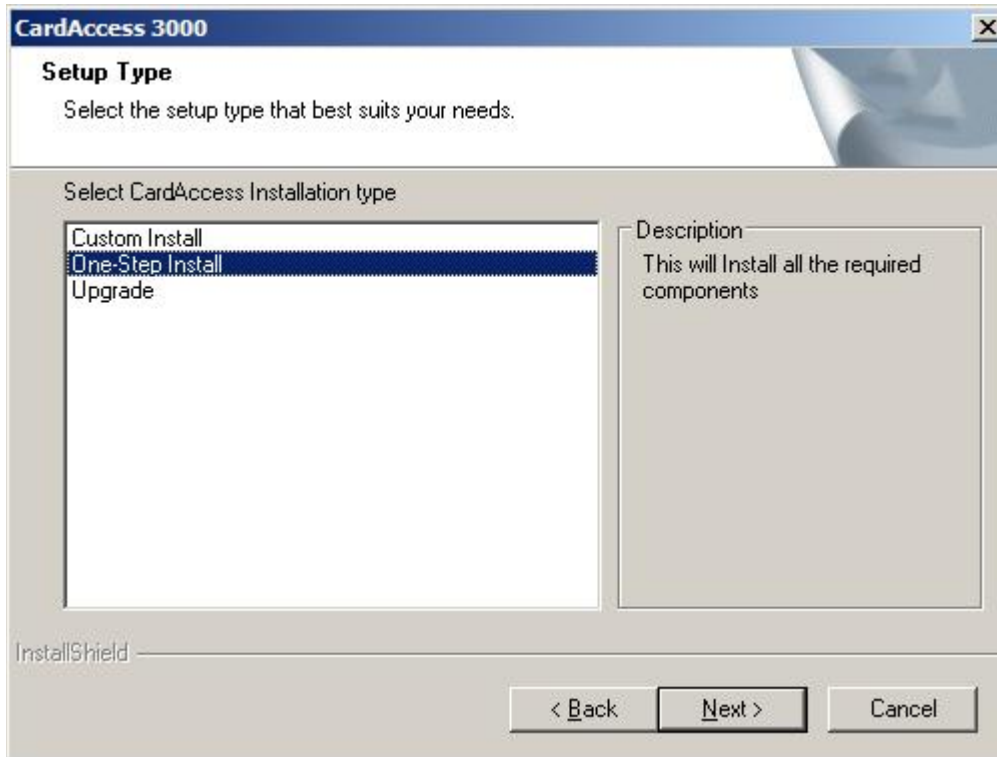


Fig. 2.9. Choosing the type of installation.

This screen shows three possible installation types available to you.

Custom Install: Selecting this option will allow you to choose the components you wish to install.

One- Step Install: Selecting this option will install all the required components.

Upgrade: Selecting this option will upgrade your existing CA software (Version 81, 121, 125, 127 or 2.0) by installing the new files that are added to the latest version.

The default installation type selection is One-Step Install. The default can be changed by selecting any of the other two mentioned options.

Click on **Next** button to continue.

The next screen gives the list of the current settings for your review, before the concerned files can be copied.

Note for Custom Install

In case you choose ‘Custom Install’ in figure 2.9 and click the Next button, you will see the following screen that shows the features list. Here, you can decide what components you wish to include in the installation.

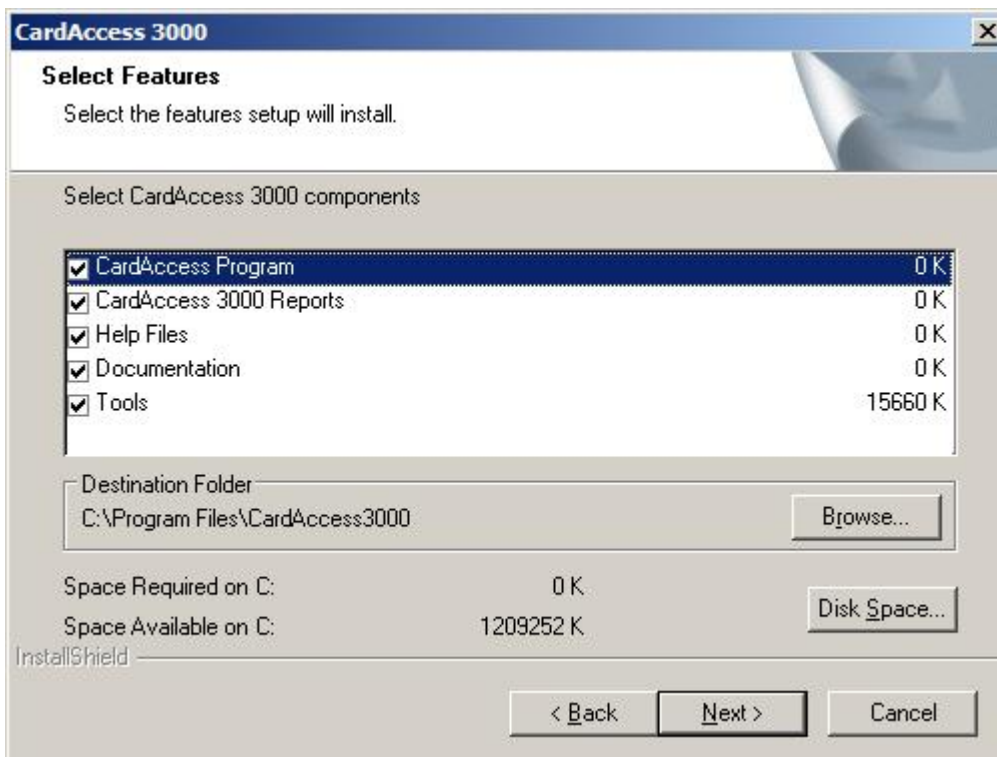


Fig. 2.10. The ‘Select Features’ window for ‘Custom Install’.

By default, all the components will be selected (all checkboxes checked). You can deselect the components you wish not to install by clicking the corresponding checkboxes, and then click on Next button in the screen (figure 2.10) to continue.

In the following screen, you can review your current settings. See figure 2.11 below. The only difference you will see in this figure is, the **Setup type** will be indicated as **Custom Install**.

Note for Upgrade

In case you choose the 'Upgrade' installation type in figure 2.9 and click the Next button, in the following screen (the Review Settings screen), the **Setup type** will be indicated as **Upgrade**. The system will also indicate the current version and build of the software you are upgrading. See figure 2.12 below.

Review Current Settings

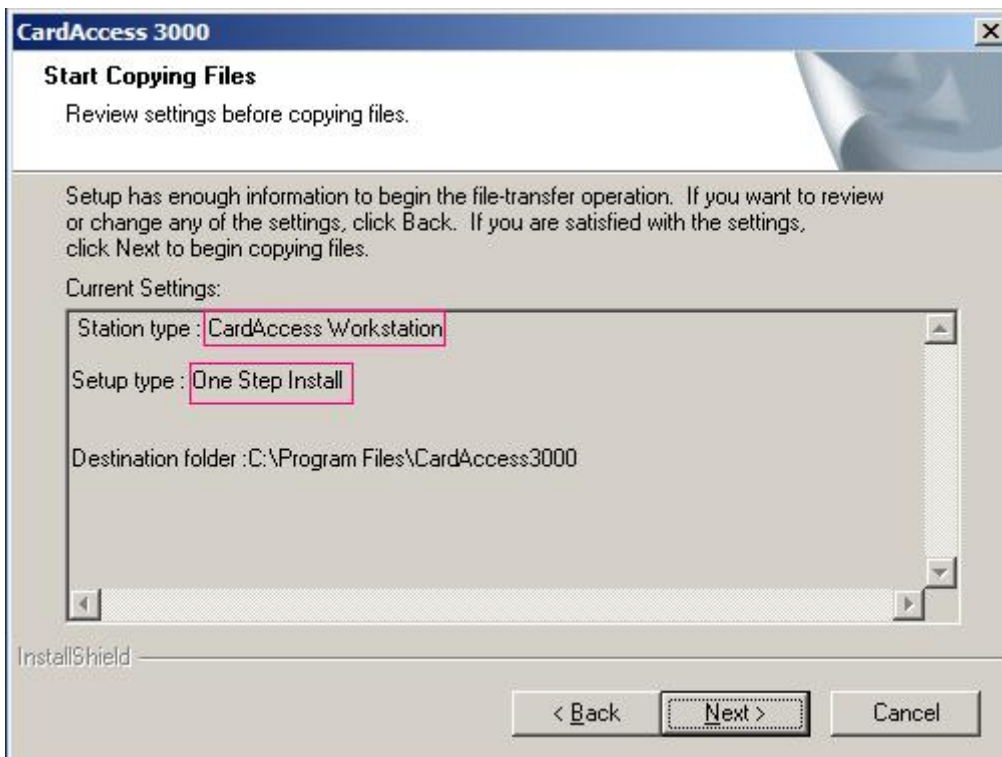


Fig. 2.11. Current settings for review.

The above screen gives the list of your current settings.

Note: If the installation type chosen was 'Upgrade' in figure 2.9, the review settings screen will indicate the current version and build of the software you are upgrading.

For example, if you are upgrading CardAccess Version 2.0.25 Build 143, the review settings will be as below.

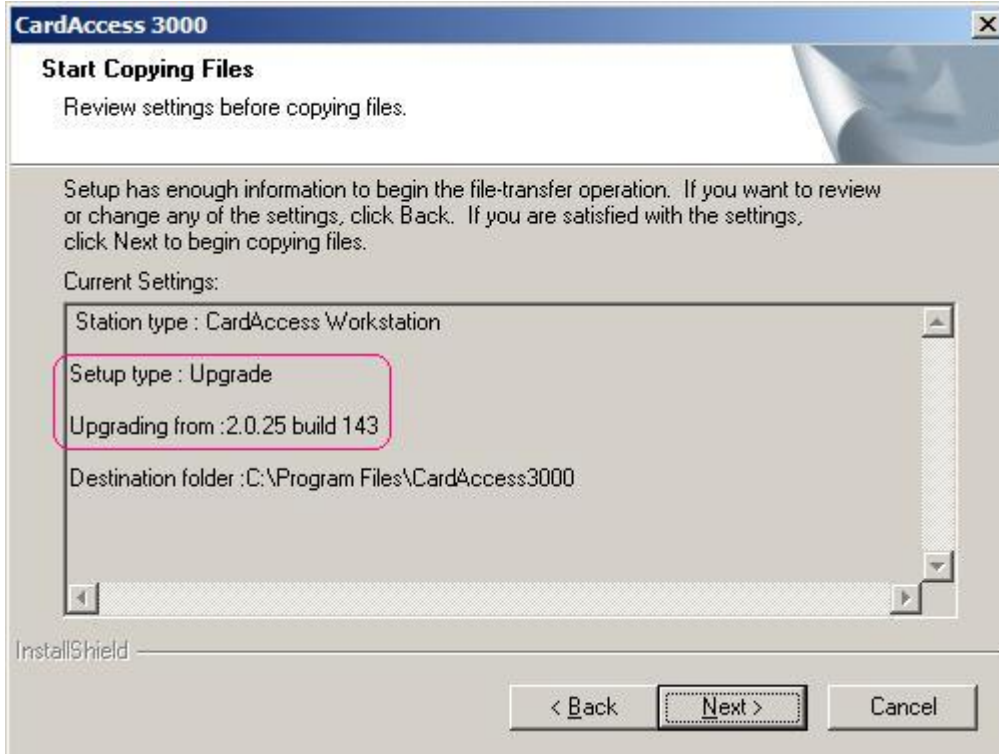


Fig. 2.12. Review Settings Screen for CardAccess Version 2.0.25 Build 143 Upgrade.

After confirming the settings, click on **Next** button to continue.

The screen that follows will show you the progress bar for software installation, followed by a couple of splash screens while the setup performs a variety of operations.

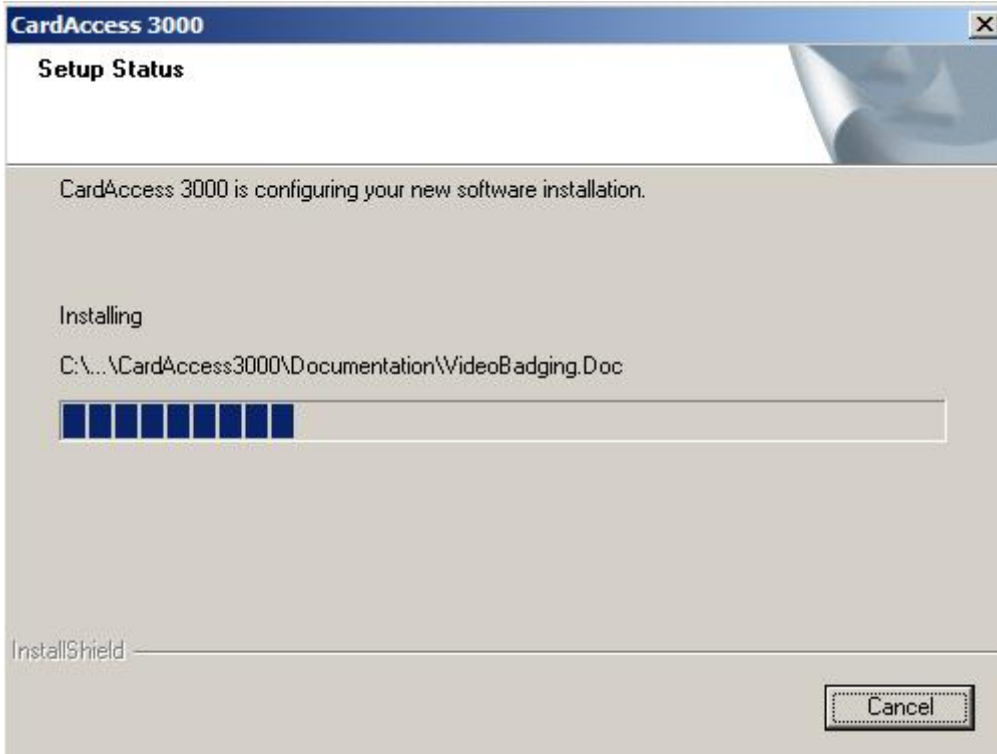


Fig. 2.13. CA 3000 Installation in progress.



Fig. 2.14. Splash screen displayed while the setup is installing SQL Client Network Utility.



Fig. 2.15. Splash screen displayed while the setup is connecting to client connection utility.

Next, you will see a dialog box where you need to specify the CICDataServer IP Address, CICDataServer Port and Workstation

on which you are attempting to install the CardAccess software.

Client Connection Utility

You need to type in the correct CICDataServer IP Address and Server Port (can use the spin controls as well) into their respective fields.

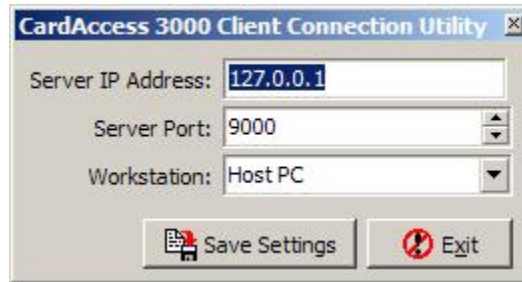


Fig. 2.16. Dialog box prompting for workstation details.

To select a specific workstation, click the down arrow to the right of **Workstation** control and click the particular workstation number.

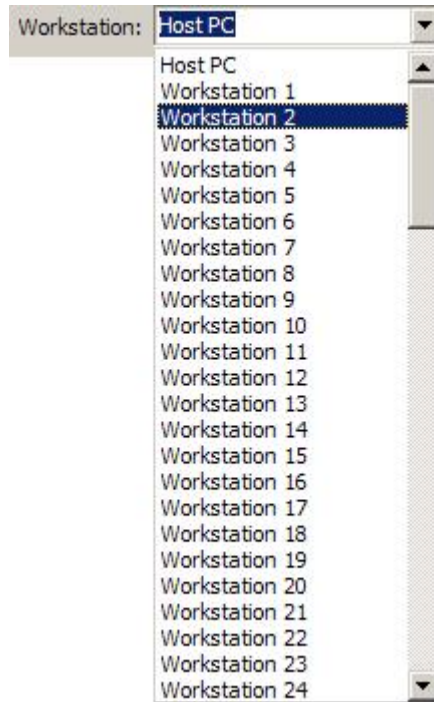


Fig. 2.17. Selecting a Workstation.

Once all the above information is provided, click on the **Save Settings** button in the ‘CardAccess 3000 Client Connection Utility’ dialog box (see figure 2.16).

On clicking, you will see the following message box to indicate that the settings have been saved.

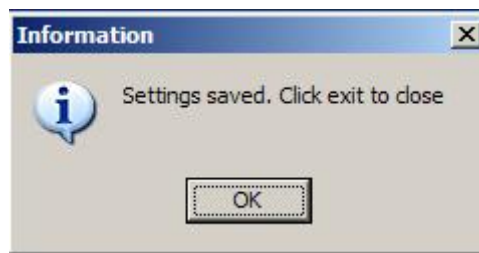


Fig. 2.18. Message box displayed after saving the ‘Client Connection Utility’ settings.

Click the **OK** button in this message box.

This will take you back to the ‘CardAccess 3000 Client Connection Utility’ dialog box (see figure 2.16), where you need to click on **Exit** button.

You will now see a couple of splash screens (see below) while the setup performs a variety of operations.

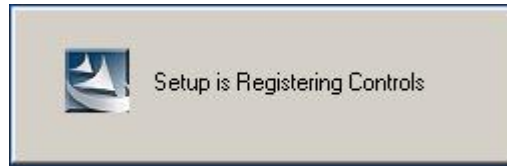


Fig. 2.19. Splash screen displayed while the setup registers controls.

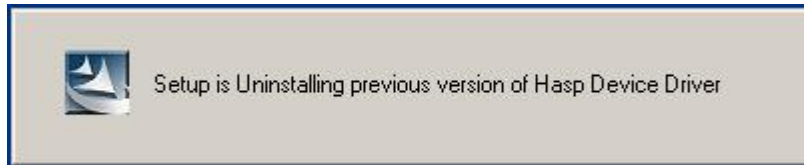


Fig. 2.20. Splash screen displayed while the setup uninstalls the previous version of Hasp Device Driver.

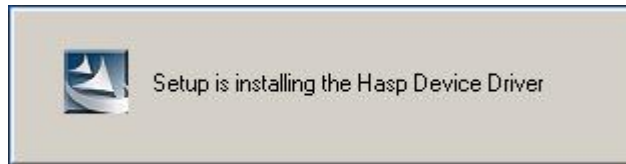


Fig. 2.21. Splash screen displayed while the setup installs Hasp Device Driver.

The next screen will give you options for installing Badging3000 software.

Badging3000 Installation



Fig. 2.22. Options to install Badging3000.

Click on **Yes** button if you wish to install **ImageWare EPI Run-Time Badging software**.

Note: In case you do not wish to install Badging 3000 and click the **No** button in figure 2.22, you will be taken directly to the Readme Information screen (see figure 2.24 below).

If you click the **Yes** button to install Badging3000, you will see the message box shown below.

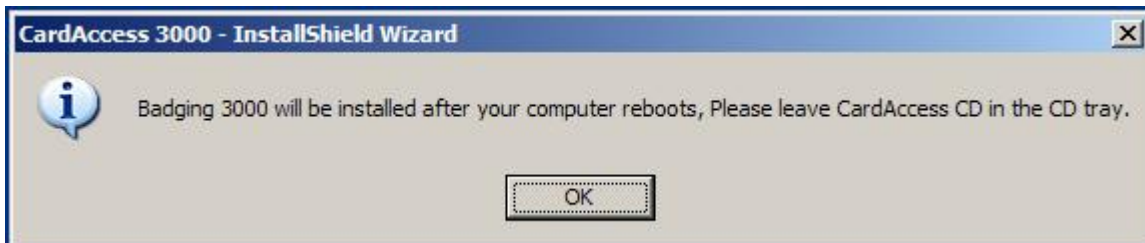


Fig. 2.23. Message displayed on opting to install Badging3000.

Click on **Ok** button in the message box.

The next screen gives the CardAccess 3000 ReadMe information.

ReadMe Information

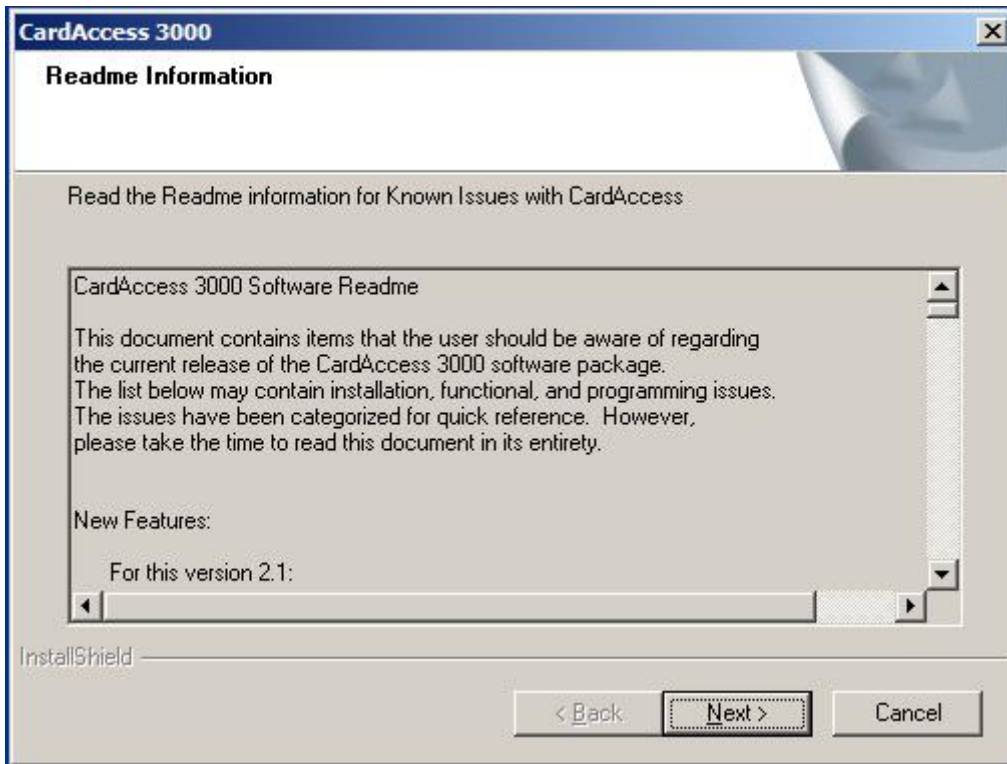


Fig. 2.24. CardAccess Readme information.

It is important that you completely go through the ReadMe information before you continue further with the installation. Please scroll down the screen to read the entire Readme information.

Installation of CardAccess 3000 will be completed in the next screen.

Restart

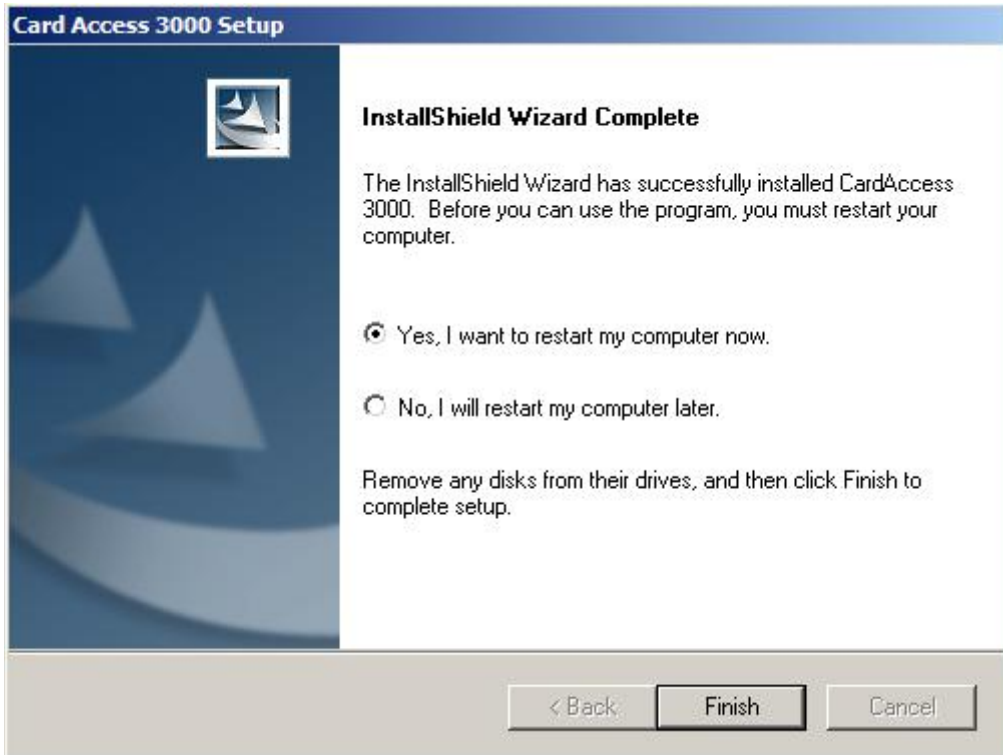


Fig. 2.25. Completing CardAccess 3000 installation.

In order to use the CardAccess 3000 software, you must restart your system. The default option is **Yes** for restarting the computer.

Click on **Finish** button to complete the installation process.

When you restart the computer, all you have to do is, double-click the **CA3000 Launcher** shortcut on your desktop, in order to start the CardAccess software.



Fig. 2.26. CA3000 Launcher Shortcut on Desktop.