

Continental Access

A Napco Security Group Company



V2.7.x Upgrade on a Server/Host Procedure

Very Important: This document is to be used on an upgrade from V2.6.x. or an earlier version of V2.7.x. If upgrading from V2.5.16 or earlier, refer to the Important Information on page 2.

REVISION C

DATE: 11/04/2010

CardAccess® 3000 



CA3000 Software Installation Procedure

Continental Access and CardAccess3000 are registered trademarks of Napco Security Group
Microsoft® is a registered trademark of Microsoft Corporation.
Windows® is a registered trademark of Microsoft Corporation.
CardAccess® is a registered trademark of Napco Security Group

Document Title V 2..7.x Server/Host Upgrade Procedure

This document contains proprietary information of Continental Access. Unauthorized reproduction of any portion of this manual without the written authorization of Continental Access is prohibited. The information in this manual is for informational purposes only. It is subject to change without notice. Companies, names and data used in examples herein are fictitious unless otherwise noted. Continental assumes no responsibility for incorrect information this manual may contain.

Continental Access
355 Bayview Avenue
Amityville, NY 11701
Phone (631) 842-9400
Fax (631) 842-9135

Web: <http://www.cicaccess.com>

License Agreement

NOTICE TO USER: THIS PACKAGE IS A CONTRACT. BY OPENING THIS SEALED PACKAGE YOU ACCEPT ALL THE TERMS AND CONDITIONS OF THIS AGREEMENT.

Use of the Software: You may install and use the software only for the purpose intended.

Copyright. You may not duplicate or copy the software or documentation, except that you may make one backup copy of the software. All copies must bear copyright notices contained in the original copy.

Limited warranty: Continental Access warrants that the software will perform substantially in accordance with the printed documentation when correctly installed on a properly configured computer for which it is intended. Continental Access warrants the discs upon which this product is recorded to be free from defects in materials and workmanship under normal use for a period of 1 year from the date of purchase. During the warranty period Continental Access will replace discs, which prove to be defective.

Important Information - Must be read before installing software.

- 1) This document covers CardAccess 3000 V2.7.19 B223 and later.
- 2) VERY IMPORTANT- If upgrading from V2.5.16 or earlier, refer to the “Upgrading CardAccess 3000 to V2.6 or V2.7 From V2.5.16” procedure. This document will assist with uninstalling CardAccess3000, Sql2000 and all other components. After all the components are removed, you will install CA3000 as a new version 2.7 Server/Host install.
- 3) If possible, always refer to the Continental Access website (www.cicaccess.com click support/click library) for the latest documentation. The released CD may not have the latest documentation.
- 4) Verify you have a physical security key or a software license for Cardaccess3000 V2.7.x. Security keys and software licenses from previous versions of CardAccess3000 are not compatible with this version. VERY IMPORTANT: The security key or software license should be placed on the CardAccess3000 server/host computer, not the workstation.

NOTE: If you are currently using a software license on V2.6.x, you must revoke it before upgrading.

- 5) If Badging3000 (EPI) is currently licensed and installed on the computer you are upgrading, DO NOT REVOKE THE EPI LICENSES OR REMOVE THE BADGING3000 SOFTWARE.
- 6) Before upgrading, refer to the CA3000 computer specifications to determine if the computer meets the specs for the CA3000 V2.7.x.
- 7) It is highly recommended to make a backup of your databases before performing an upgrade.

CA3000 v2.7 Server/Host PC Recommendations

	Server (1-4 Workstations)	Server (5-19 Workstations)	Server (20-49 Workstations)
Processor	Pentium Dual Core, 2.6GHz (min)	Xeon Quad Core 2.0GHz (min)	2 x Xeon Quad Core 2.0GHz (min)
Ram	2.0 GB Min	4.0 GB Min	8 GB Min
Hard Drive	250 GB	500 GB	Raid 5 - 3 drives minimum
USB Ports	2 Min	2 Min	2 Min
Serial Ports	Optional - 1 expandable to 64	Optional - 1 expandable to 128	Optional - 1 expandable to 128
Parallel Ports	1	1	1
Mouse	PS2 or USB	PS2 or USB	PS2 or USB
Monitor	17" SVGA (1024x768)	17" min	17" min
CD/DVDROM	48x/16x	48x/16x	48x/16x
CDRW/DVDR	24x/8x	24x/8x	24x/8x
Sound	Optional but Stand-Alone recommended	Optional	Optional
Network Card	100/1000 Mb NIC Ethernet	100/1000 Mb NIC Ethernet	100/1000 Mb NIC Ethernet
Operating System	Win XP Pro w/SP3, Win 7 Pro 32 bit (configured in Win XP Compatibility Mode), Win 2003 32 bit, or Win 2008 32 bit. Note: 64 bit computers are not supported.	Win XP Pro w/SP3, Win 7 Pro 32 bit (configured in Win XP Compatibility Mode), Win 2003 32 bit, or Win 2008 32 bit. Note: 64 bit computers are not supported.	Win 2003 32 bit or Win 2008 32 bit. Note: 64 bit computers are not supported.
Database	MSSQL 2005 Express or MSSQL Server 2005 for higher performance	MSSQL Server 2005 recommended	MSSQL Server 2005
Backup	Tape / CD / DVD / Network	Tape / CD / DVD / Network	Tape / CD / DVD / Network
System Size	This is the recommended PC server specification for a system with up to four workstations. It can be used for a stand-alone system, a workstation or a CA3000 Server. For high transaction environments some specifications may change.	This is the recommended PC specification for a CA3000 Server supporting up to nineteen workstations. For high transaction environments some specifications may change.	This is the recommended PC specification for a CA3000 Server supporting up to nineteen workstations. For high transaction environments some specifications may change. For larger systems please consult with Continental Access.
Notes:	(1) If using SQLExpress, the database size should not exceed 4GB. (2) Disk drive usage is dependent on the number of transactions kept in backup. (3) Additional RAM will improve performance (4) It is best to perform badging and other integration functions on a workstation, not the server.		

*** Other than a small Stand-Alone system, Continental Access does not recommend running Photo-badging, DVR/NVR Integration, Napco Integration, Scripting, or Dynamic Maps from a Host machine. Please refer to our Workstation Recommendation below for these specifications. ***

Scope

This document contains information regarding the upgrade to a CA3000 V2.7.x from V2.6.x only. It is to be used for a CA3000 host upgrade. If Badging3000 (EPI) is currently installed and licensed on the computer you are upgrading, do not revoke the EPI licenses and do not remove the badging3000 software. It is highly recommended to run Badging3000 (EPI) on a workstation, not the CA3000 host.

InstallShield Wizard

If auto start is enabled on your system, the **CardAccess3000 Version 2.7 Setup** screen will display after inserting the CA3000 CD in the CD-ROM drive (Refer to Figure 2). If Figure 2 displays, skip ahead to the steps following Figure 2. If nothing happens after inserting the CA3000 CD in the CD-ROM, continue with the next steps.

Note: If auto start is not enabled on your system, follow the steps below to execute the program.

- a. Click the **Start** menu on your PC, and then click on the **Run** menu option. You will see the 'Run' dialog box.
- b. In the 'Run' dialog box, click the white space of the **open** control, and type in **D:\bin\Launch.exe** (Refer to Figure 1).

Note: D represents CD-ROM drive letter. This letter will be different depending on the drive letter of your CD-ROM.

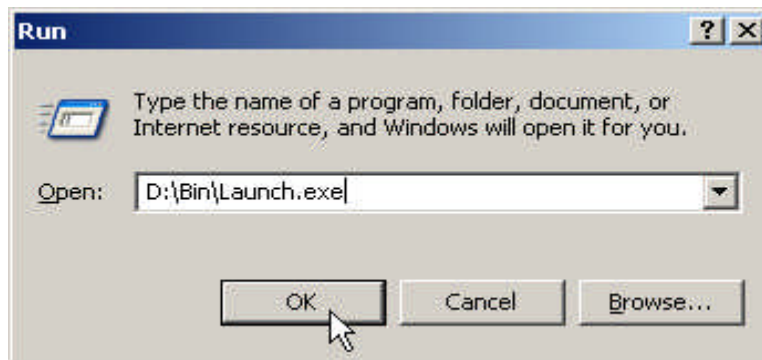


Figure 1

Click on **OK** in the 'Run' dialog. The **CardAccess3000 Version 2.7 setup** screen will display (Refer to Figure 2).



Figure 2.

Note: If the following applications are already on the computer, some of the steps will be skipped.

Click on the **Install CardAccess 3000** button. Click **Next**. The **Pending DVR Prerequisites** screen will display (Refer to Figure 3).

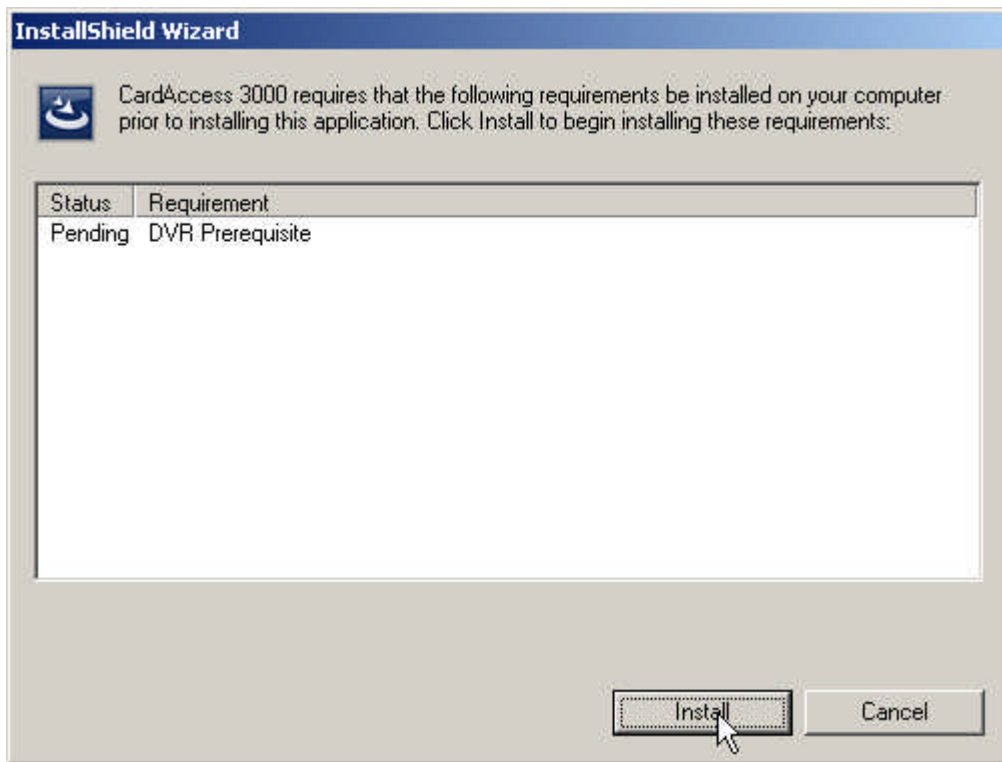


Figure 3.

Click on **Install**. The **Installing DVR Prerequisites** screen will display if they are not currently installed on the computer (Refer to figure 4).

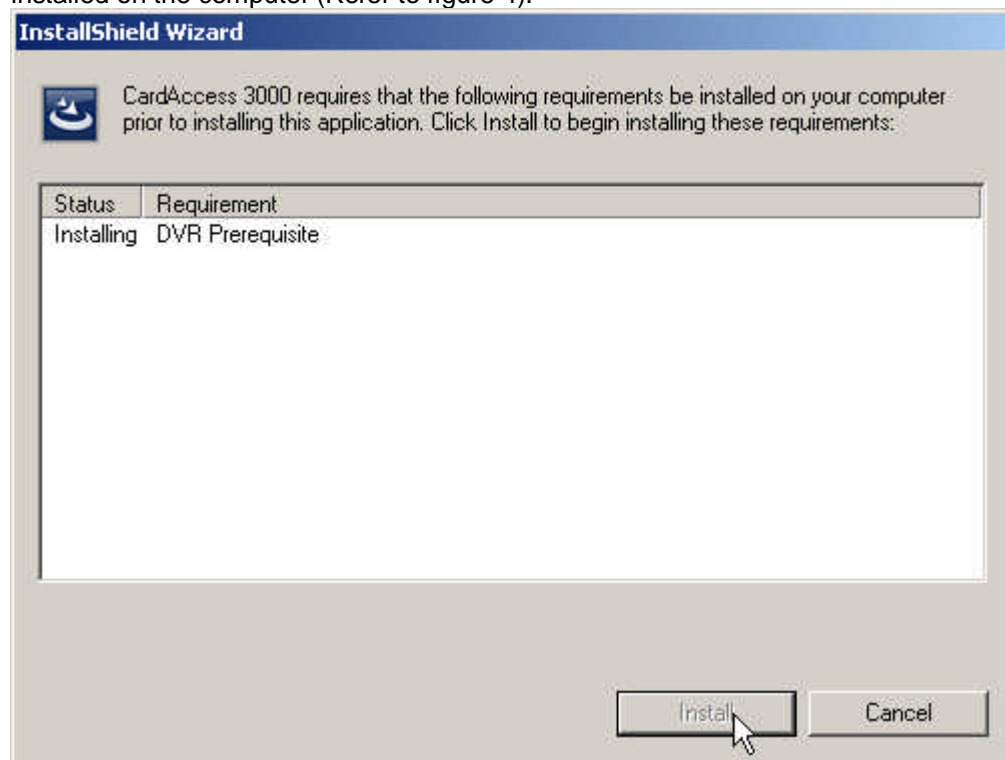


Figure 4.

During the installation of the DVR Prerequisites, a screen will display referencing the installation of the VC++ redistributable files if these are not already installed on the computer. You will be prompted to click **INSTALL** or **CANCEL**. Click Install.

Microsoft .NET Framework Installation

The installation of CA3000 V2.7.x requires Microsoft .NET Framework 3.5. If this is not currently installed, the CA3000 installation process will install it (Refer to figure 5). If this is already installed on the computer, the installation process will skip to the **CardAccess3000 Upgrade**.

NOTE: BE PATIENT...THIS WILL TAKE A FEW MINUTES.

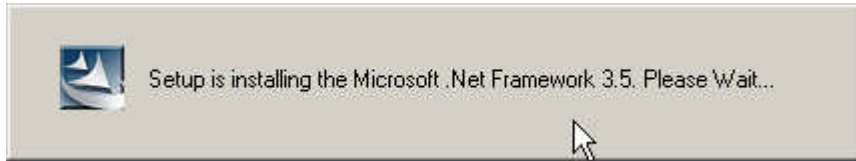


Figure 5.

CardAccess 3000 Upgrade

NOTE: Unlike any other versions, the V2.7 upgrade procedure will automatically detect a previous version of CA3000 and uninstall it before installing the CA3000 V2.7.x.

The CardAccess 3000 **InstallShield Wizard** screen will display "**Setup has detected a previous version CardAccess 3000 and setup will Uninstall before installing CardAccess 3000 2.7 version**" (Refer to figure 6).

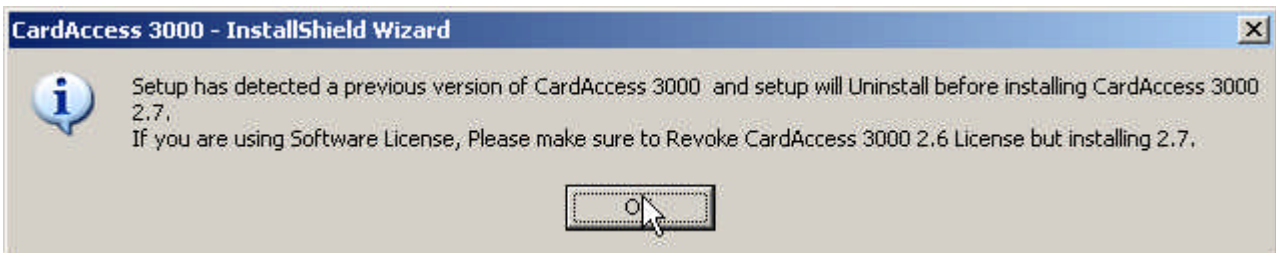


Figure 6.

Click **OK**. The **Setup is Uninstalling CardAccess 3000 2.6 version. Please wait...** screen will display (Refer to Figure 7).

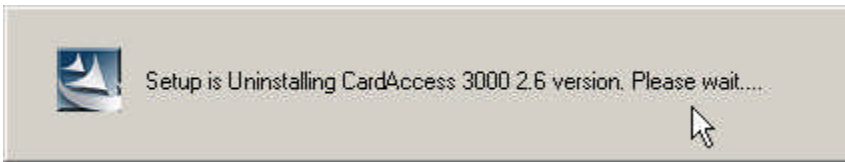


Figure 7.

After the Uninstall is complete, the **ADH Source Filter for Direct Show Setup Wizard** screen will display (Refer to figure 8).



Figure 8.

Click **Next**. The **ADH Source Filter for Direct Show Select Installation Folder** screen will display (Refer to figure 9).

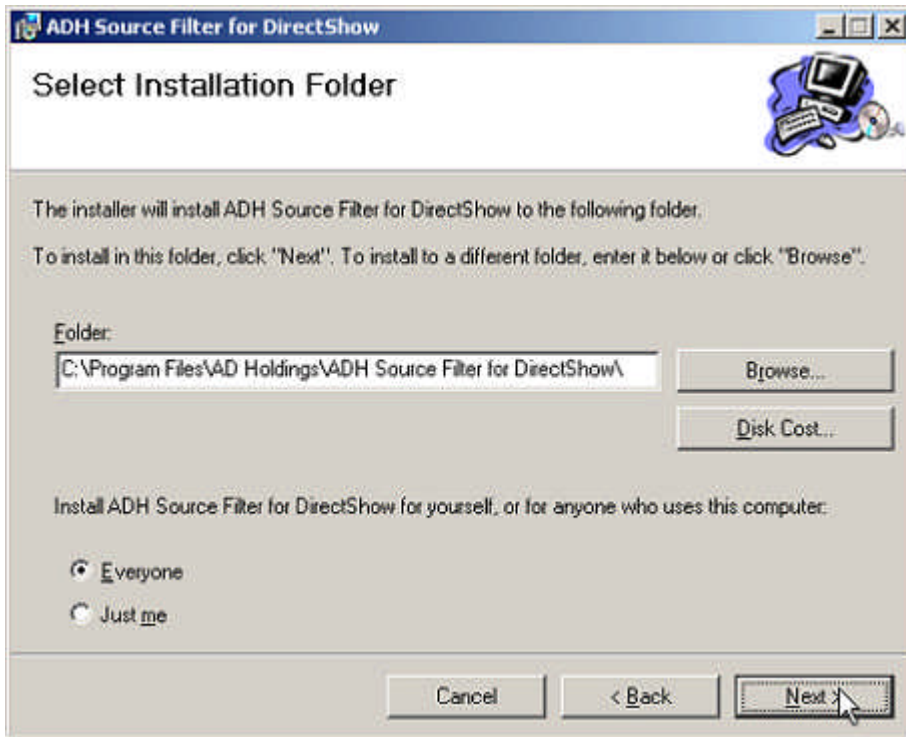


Figure 9.
Click **Next**. The **ADH Source Filter for Direct Show Confirm Installation Folder** screen will display (Refer to figure 10).

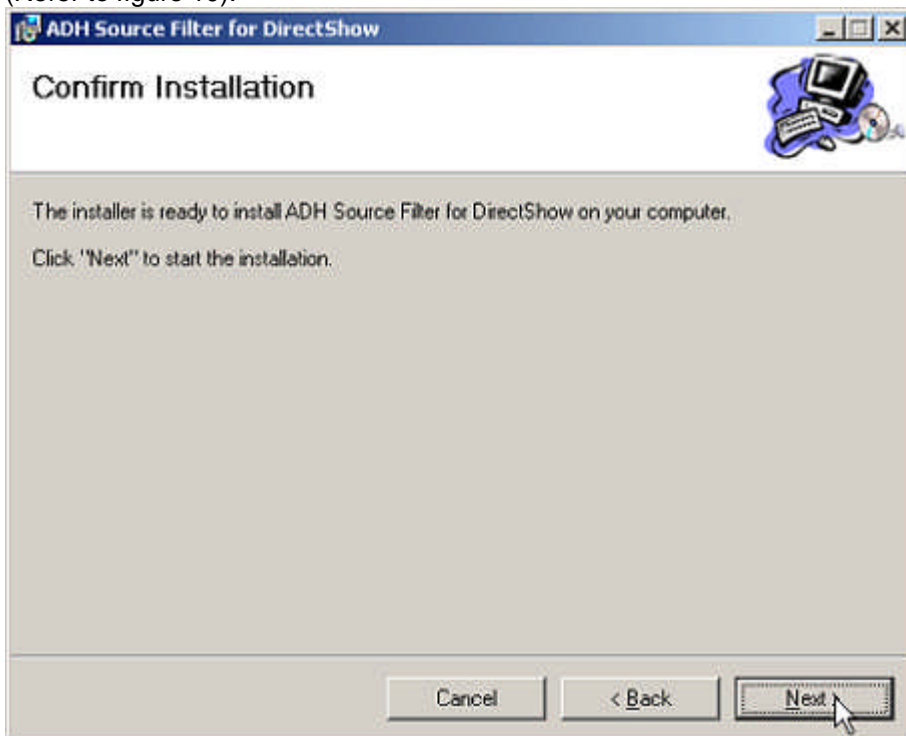


Figure 10.
Click **Next**. The **ADH Source Filter for Direct Show Installation Complete** screen will display after the installation is complete (Refer to figure 11).

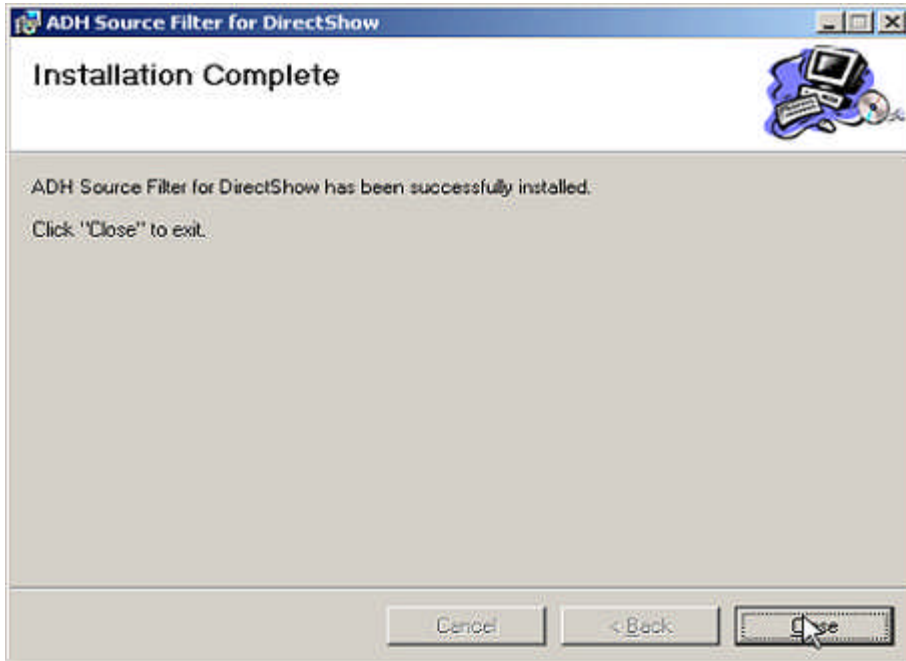


Figure 11.
Click **Close**. At the completion of the **ADH Source Filter for Direct Show** installation, the **Welcome to CardAccess 3000 Setup program** screen will display (Refer to Figure 12).

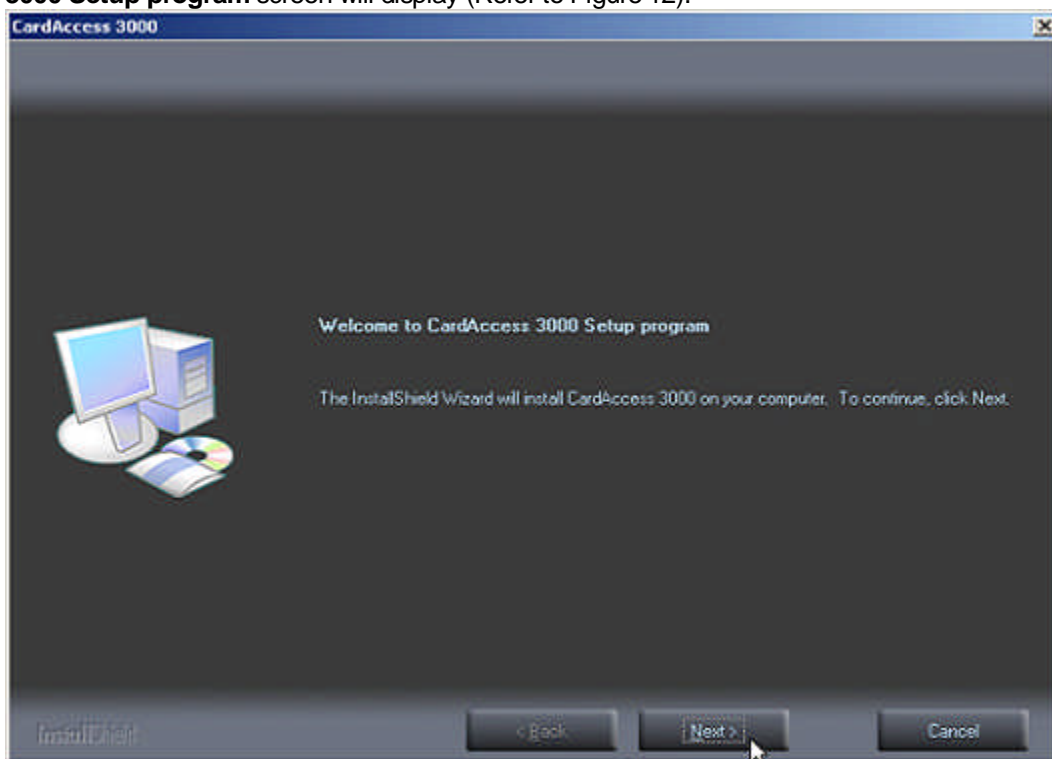


Figure 12.
Click **Next**. The **CardAccess Install type** screen will display (Refer to figure 13).

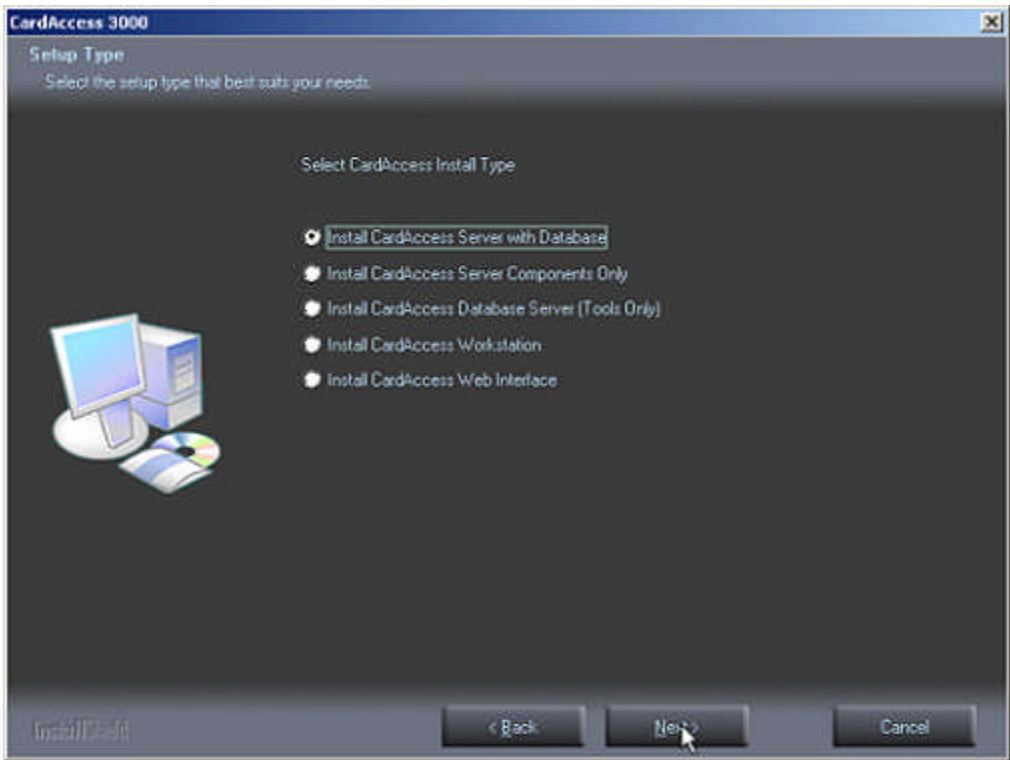


Figure 13.
Click **Next**. The **CardAccess Destination Folder** screen will display (Refer to figure 14).

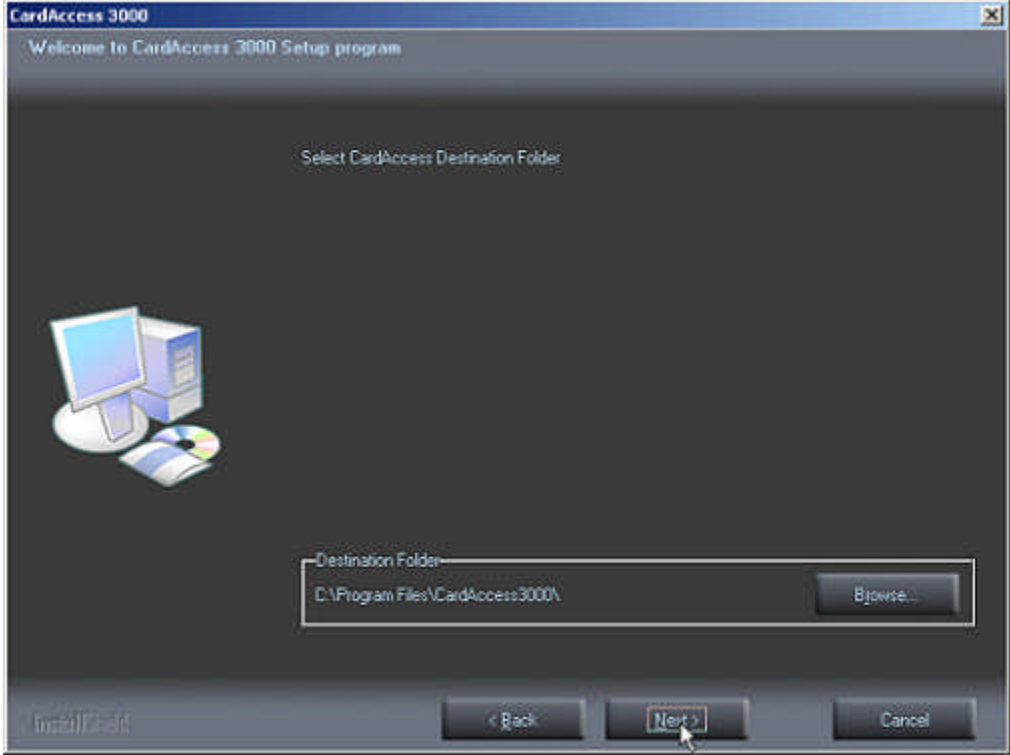


Figure 14.
Click **Next**. The **Select Additional CardAccess Components** screen will display (Refer to figure 15).

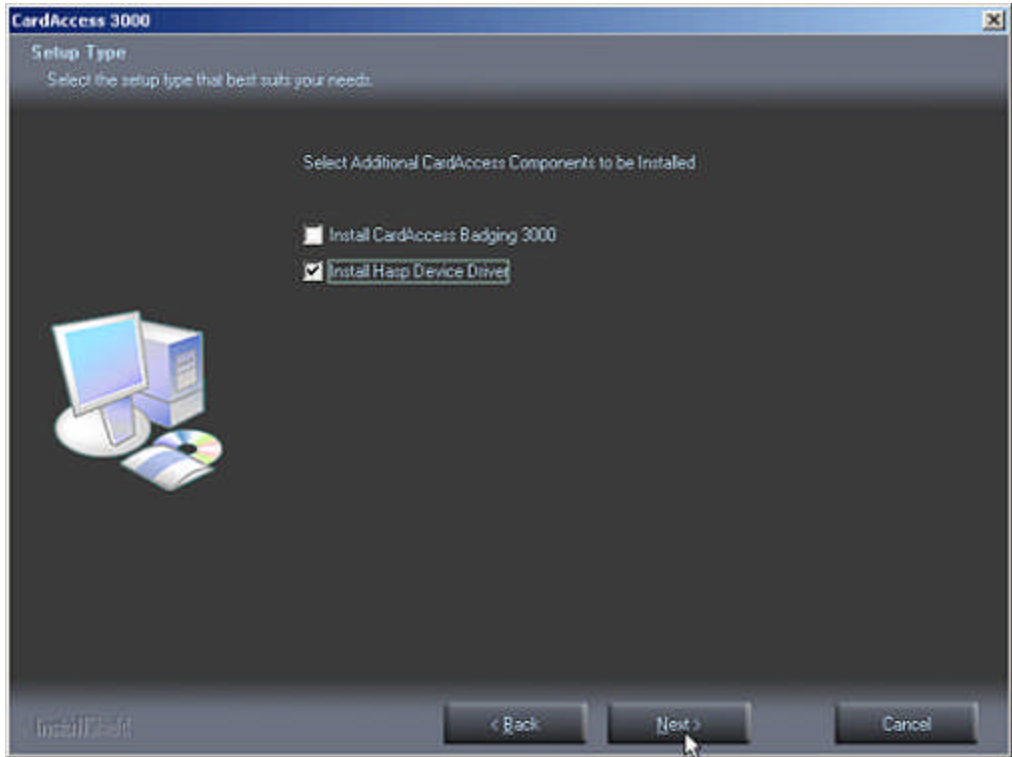


Figure 15.
Click **Next**. The **Current Settings** screen will display (Refer to Figure 16).

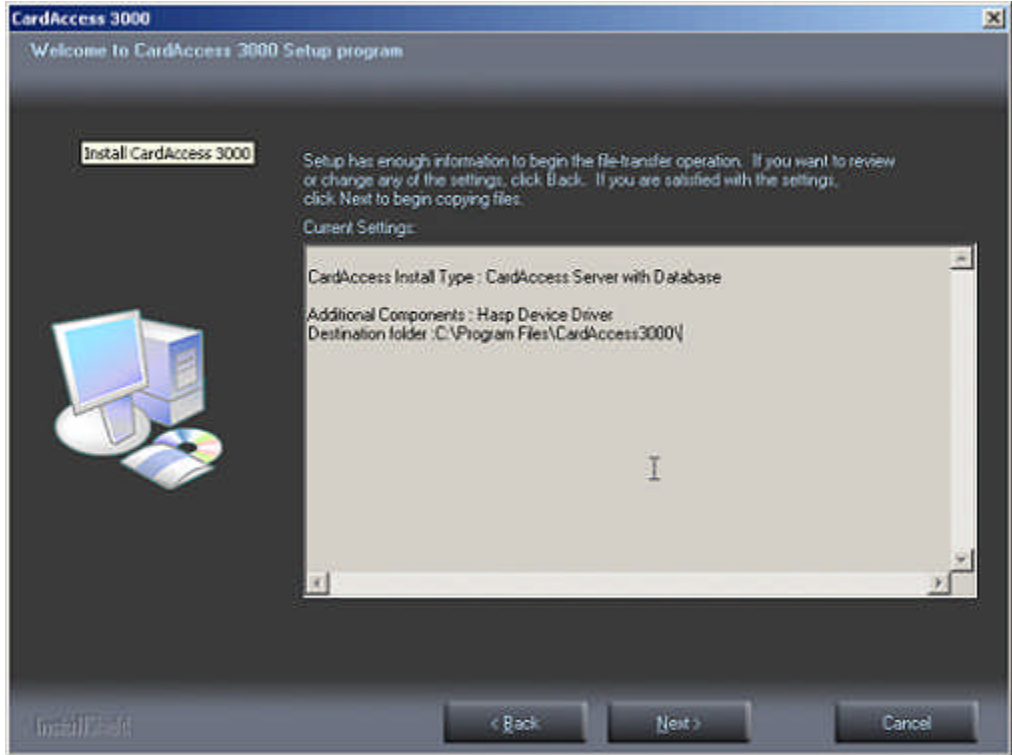


Figure 16.
Click **Next**. A screen will display indicating the stopping of services (Refer to Figure 17).

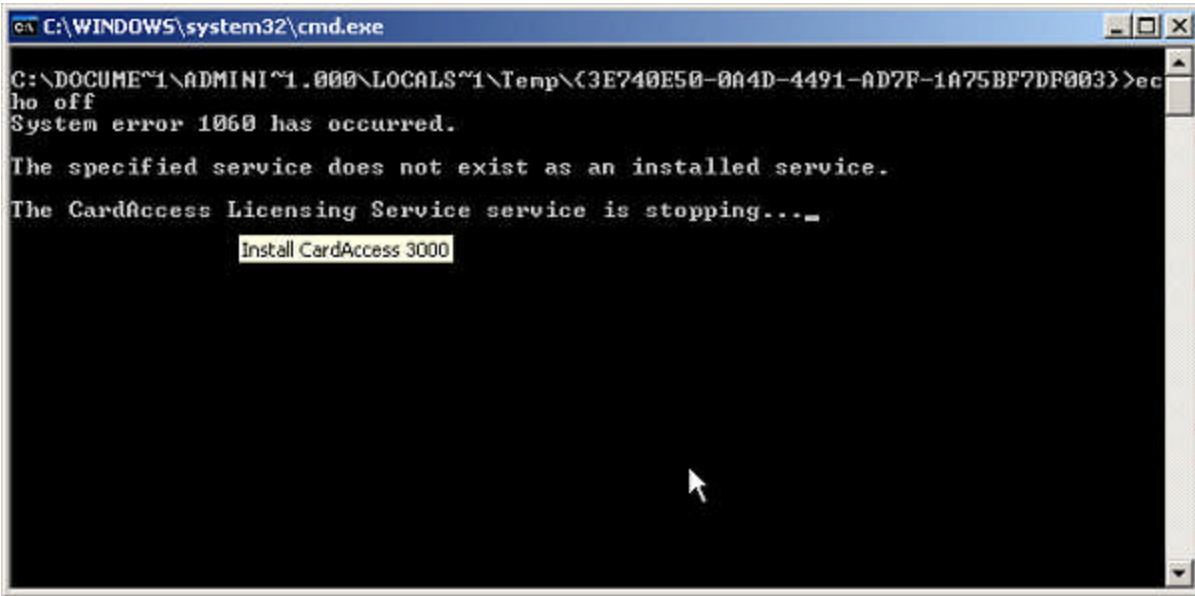


Figure 17.

After the services are stopped, a progress bar will display while the CardAccess 3000 installation is validated and installed (Refer to Figure 18 and 19).

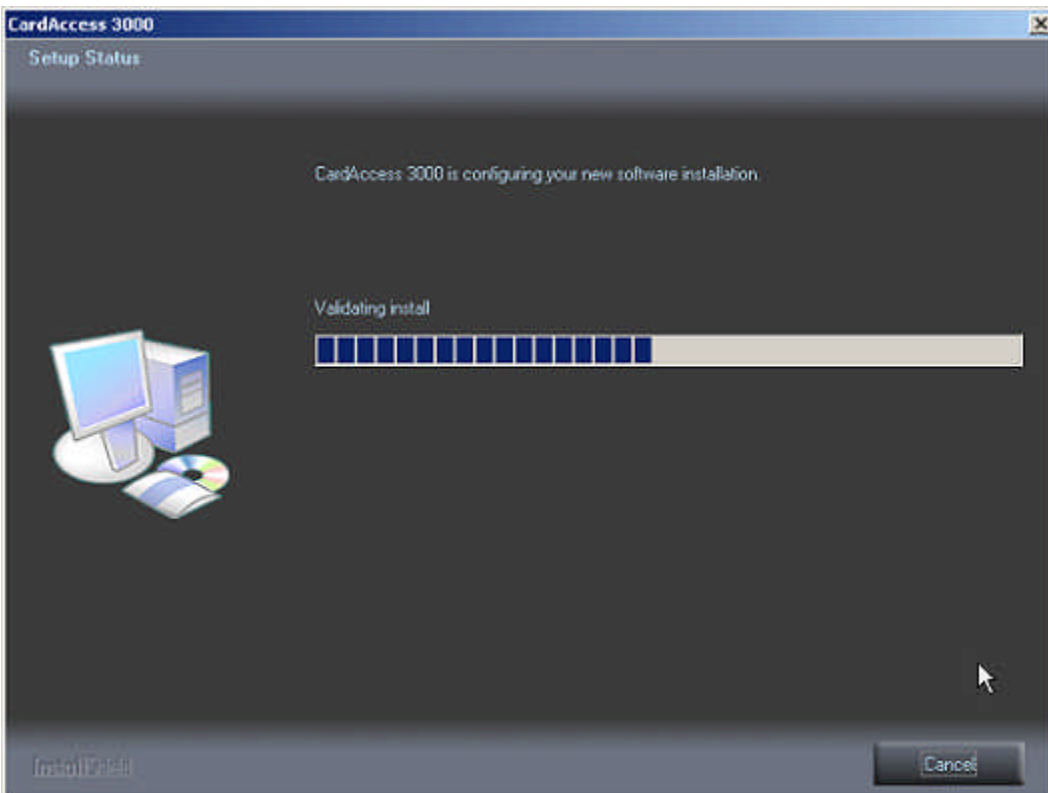


Figure 18.

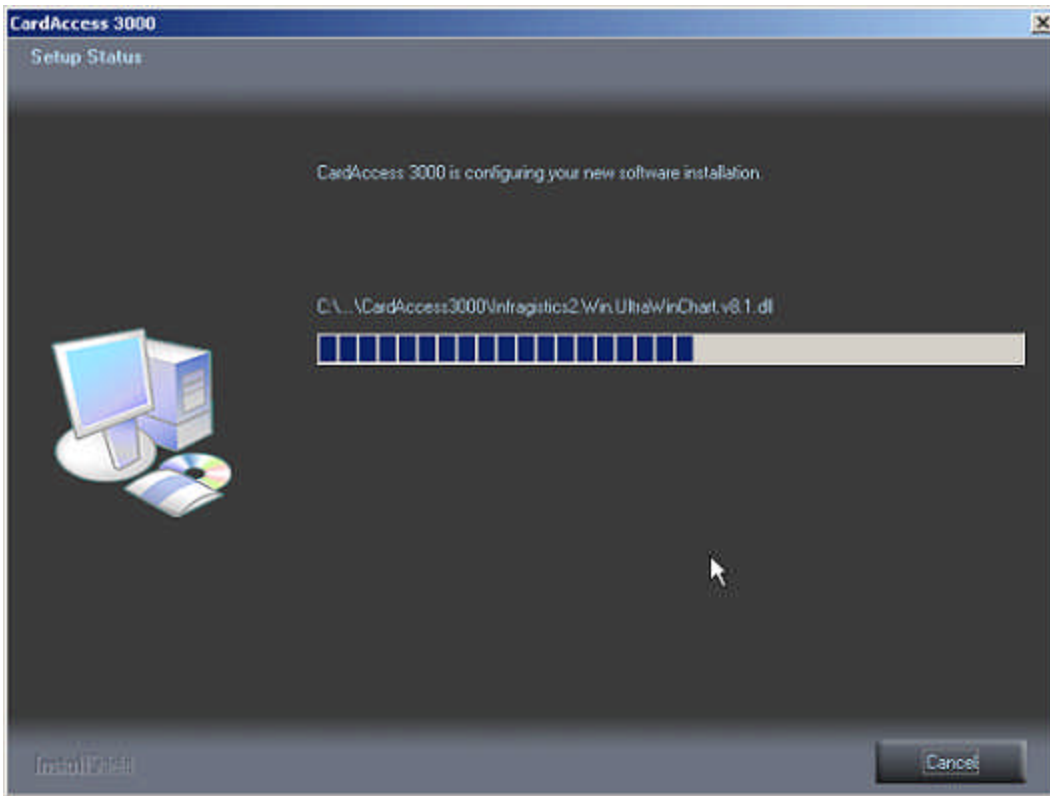


Figure 19.

After the completion of the CardAccess 3000 installation, the **Setup is installing the Hasp Device Driver** screen will display (Refer to figure 20).

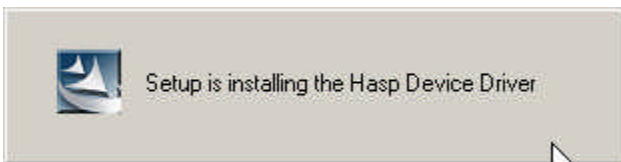


Figure 20.

After the completion of the Hasp Device Driver Installation, the CardAccess 3000 database(s) **Automatic Update** screen will display (Refer to figure 21).

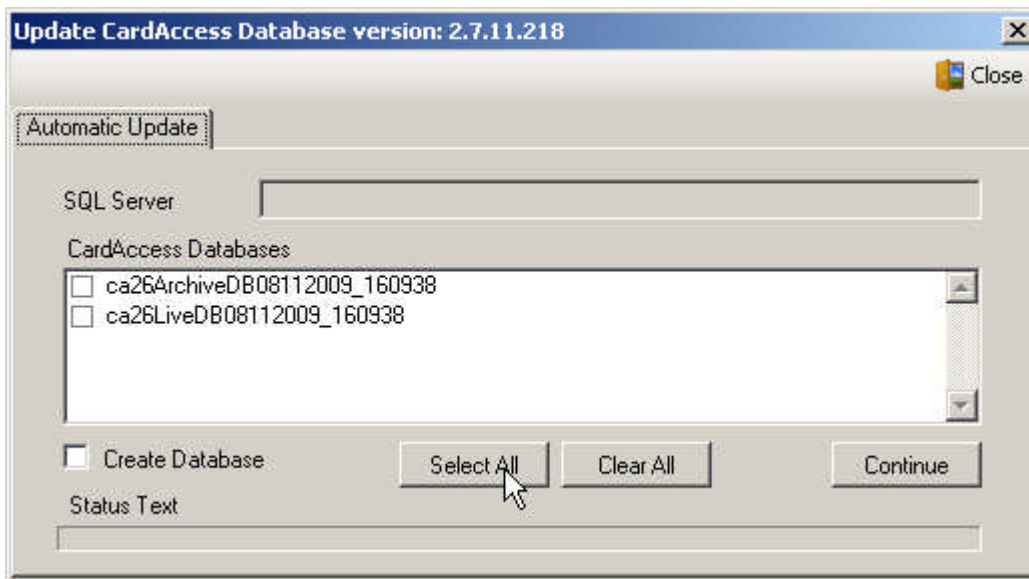


Figure 21.

Select the database(s) you wish to update.

Click **Continue**. The **Database Update Warning** screen will display (Refer to figure 22).

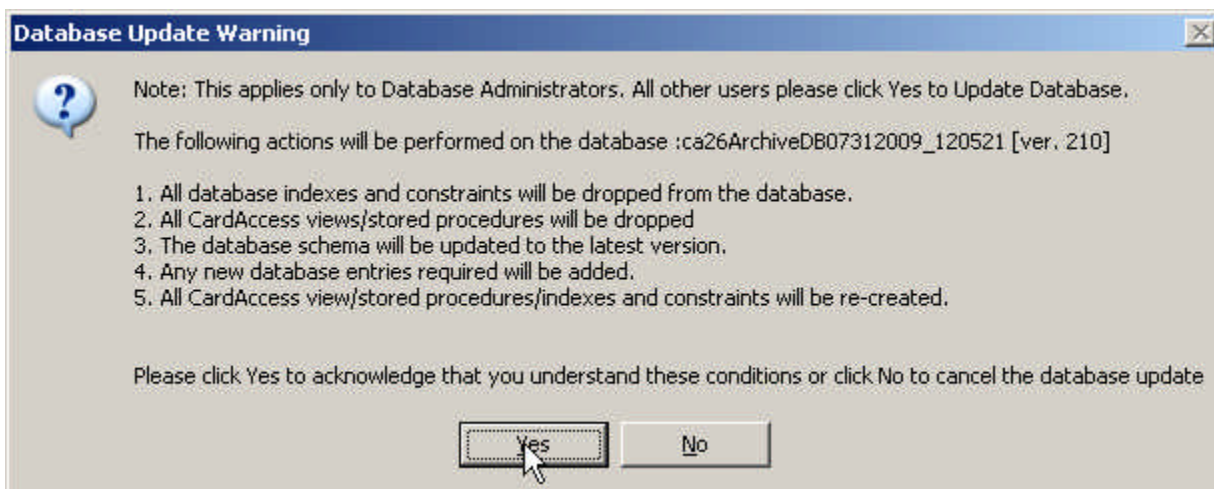


Figure 22.

Click **Yes**. The database(s) selected will be updated.

A progress bar will display while updating database(s).

At the completion of the **Automatic Database Update** the **Readme Information** screen will display. **VERY IMPORTANT:** It is very important to read the Readme information for important setup information and know issues (Refer to Figure 23).

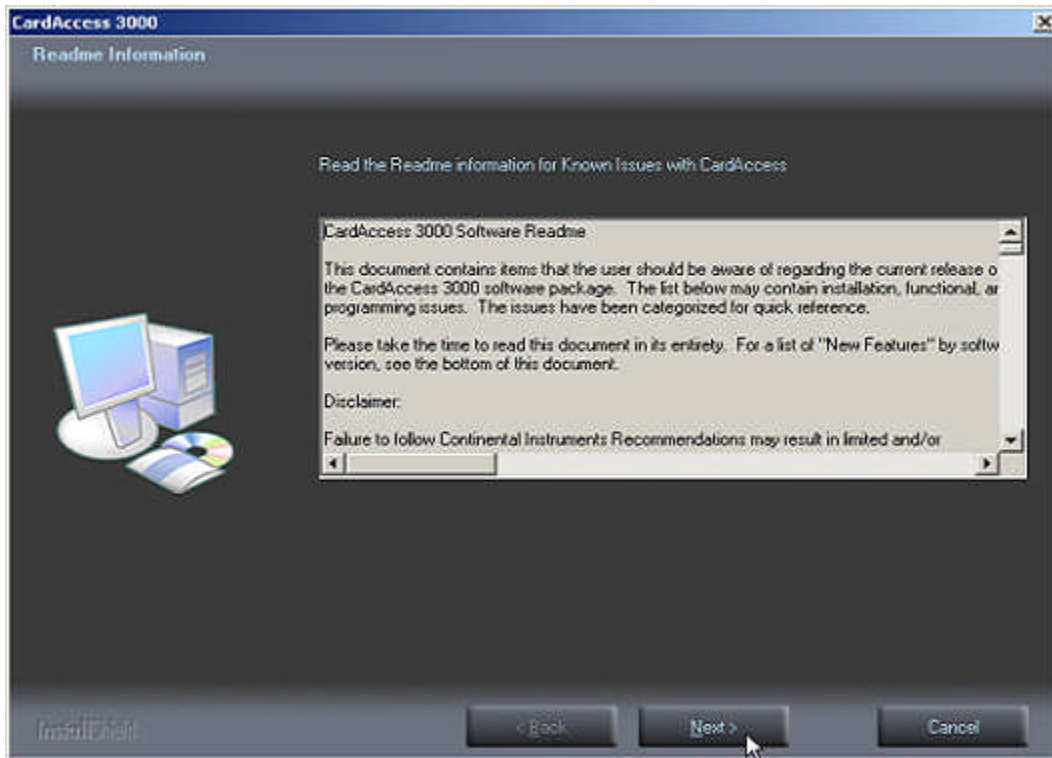


Figure 23.

After reviewing the Readme Information, Click **Next**. The **InstallShield Wizard Complete** screen will display (Refer to Figure 24).

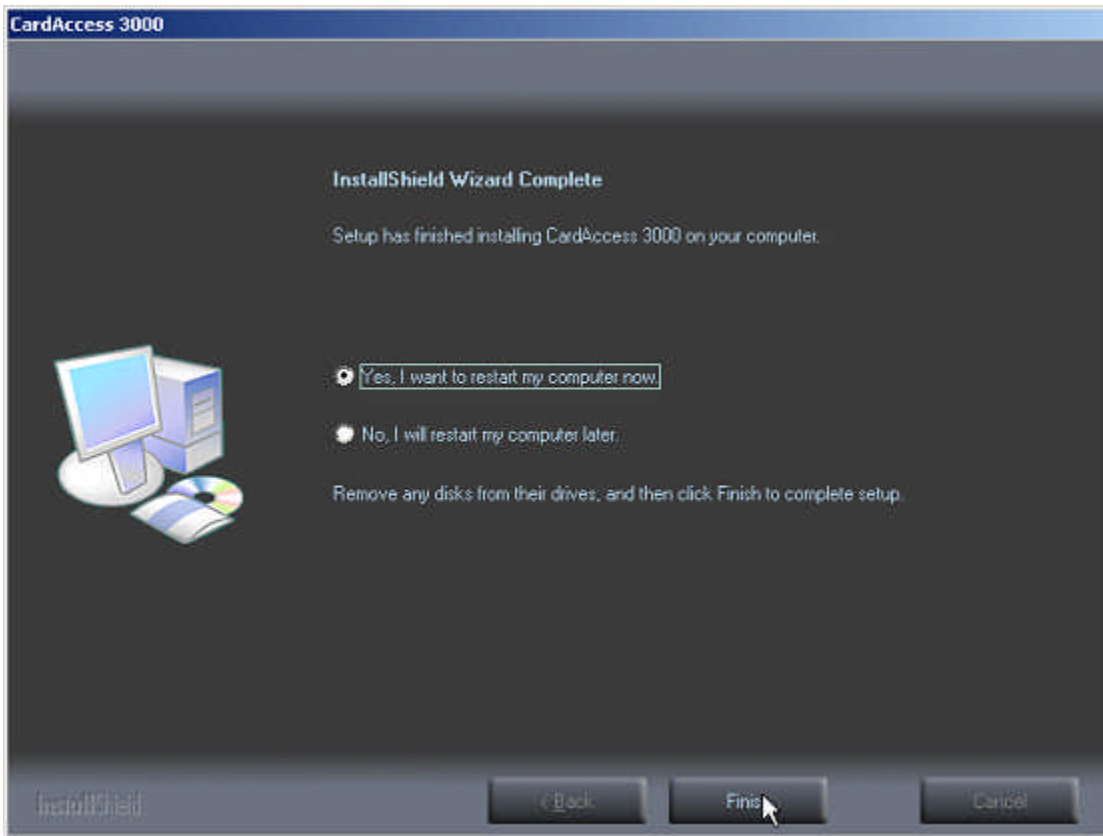


Figure 24.

Verify the **Yes, I want to restart my computer now** option is selected. This should be selected by default. Click **Finish**. The computer will restart.

After the computer reboots, the CardAccess 3000 license manager screen will display. If you purchased a physical USB security key, close this screen. If you were supplied a license number for software licensing, you will need to activate and register the software license now.

If you have a physical security key, you will need to install it before launching the CardAccess 3000 (after inserting the security key into the USB port, you should see a “New hardware has been detected” message display).

The CardAccess installation is now complete.