

NAPCO Integration

CA3NAPX Gemini Alarm Panel Interface

The Continental Access/NAPCO Integration solution provides seamless integration with the CardAccess® CA3000 V2.0 & higher software and the NAPCO Gemini Series of alarm panels. By combining the power of the Continental's CA3000 Access Control System and the NAPCO 32 to 255 zone Gemini GEM-P3200, GEM-P9600 or GEM-X255 Alarm Panels, the user can combine all of their alarm events into one, easy-to-use, CardAccess Graphical User Interface (GUI).

Events

With this interface, NAPCO alarms are routed, by priority, directly to the CA3000 Event/Pending Alert screen in real time. This gives onsite security offices more direct, immediate alarm reporting on one centralized user interface. This capability can allow faster dispatch on alarm, to pinpointed locations, by internal or external security patrols/staff. The CA3000 can also send email or pager notification of the alert.**

Arming & Disarming

The Continental/NAPCO Integration provides the user the ability to program a CA3000 cardholder, or cardholders, to arm or disarm a Napco alarm area/areas. Any of the access control reader technologies (biometric, proximity, magstripe, etc..) available to the CA3000 system can be utilized to perform this function. There is also a built-in manual control interface for arming or disarming with a click of the mouse. The CA3000 can notify the user at the reader level whether a Napco area is ready for arming, armed or disarmed.**

Communication

By replacing the Napco Panel firmware (CA3NAPX), you have several choices of communications protocol between the Napco panels and the Continental CA3000 software. For distances up to 50' using an RS232 cable, or 100', using CAT5 cable, the GEM-RS232KIT is available. This kit provides a direct-connect from the PC to the Napco Alarm Panel. For longer distance communications, or for installations with multiple Napco panels, a Napco NetLink™ TCP/IP Module (NL-MOD) is available. The Napco NetLink option provides added flexibility since the panel(s) can be installed anywhere there is a network connection—in the next room or the next town over.



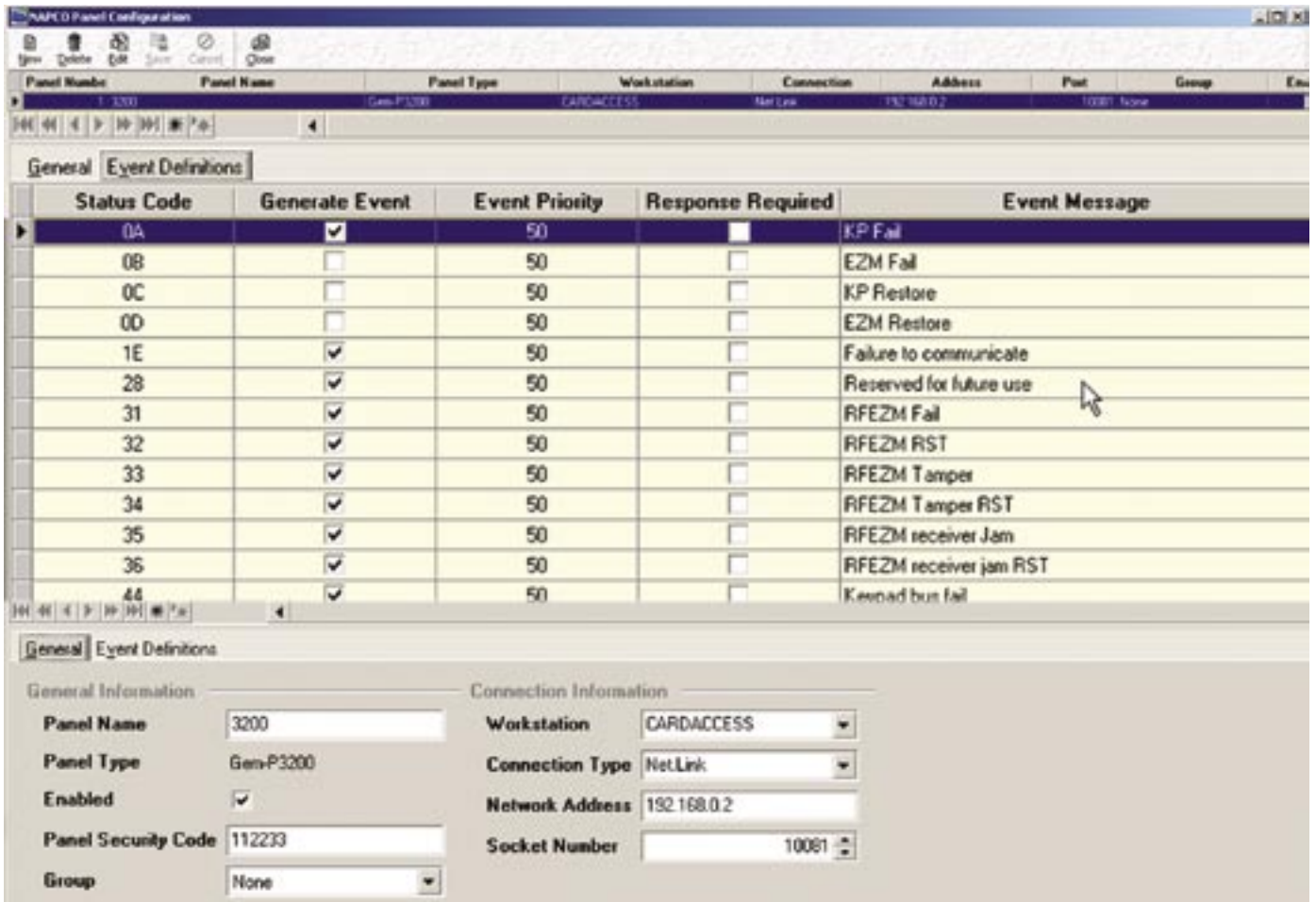
Feature	Description
Gemini Alarm Panels	The CA3000 communicates with the Gemini P3200, P9600 & X255. (Firmware specific)
Alarm Panel Communications Options	The CA3000 communicates with the NAPCO panels over R232 or TCP/IP. (Additional hardware may be required)
Central Station Capability	Alarms come directly into the CA3000 GUI for central station-like monitoring capability.
Cardholder Control	Cardholders can be setup to arm or disarm the NAPCO panel or area at any CA3000 access reader.
Bi-directional Control	CA3000 can trigger relays in the NAPCO panel and vice-versa.
Advanced Scripting	Wizard-driven interface that allows programming of more powerful Links
NAPCO Event-to-DVR Integration	Trigger DVR recording upon any NAPCO alarm. Watch video for any NAPCO panel event.
Emergency Override	CA3000 has complete manual override capability to arm or disarm NAPCO panels.
Unlimited Panels	There is no preset limit to the amount of NAPCO panels the CA3000 can communicate with.
Audit Trail**	Track alarm panel arm & disarm activity by user/ cardholder.
Panel Status**	The CA3000 can give visual control for panel ready/arm-disarm status at the reader level

*The NAPCO alarm panel interface is available as an add-on option for CA3000 V2.0 or higher. **Some advanced features require CA3000 V2.5.



NAPCO Integration

CA3NAPX Gemini Alarm Panel Interface



Additional Functionality*

Linking

All NAPCO alarm panel events can be used as triggers for advanced functionality built into the CA3000 program. The user has the power to create a *link* within the CardAccess program to use an event from the NAPCO panel to trigger one, or many, outputs on any Continental panel on the system.

Scripting

The user also has the ability to create an advanced *script* within the CardAccess Scripting service to trigger additional functionality within CardAccess program using a NAPCO alarm event.

Feedback

The CA3000 can be setup to give a visual indication, by way of relay control, of the status of the NAPCO panel is at a reader level.

DVR Integration:

Continental Access has taken integration to the next level by combining two separate interfaces into one. The CA3000 has direct integration between the DVR and NAPCO panel interfaces. This allows the user to trigger DVR recording on any NAPCO panel event. It also allows video association and retrieval for any NAPCO panel event.

*Please contact CI for detailed information. Some features require advanced training & programming.

NAPCO Gemini Panel	NAPCO Keypad Model	Min. Keypad Version	Min Panel Firmware Version
Gem-X255	RP1CAe2	V 8C	4A
Gem-X255	K1CA	V 8C	4A
Gem-P9600/3200	RP1CAe2	V 8C	50B
Gem-P9600/3200	K1CA	V 8C	50B

The CA3000/Napco Interface requires the latest panel firmware be installed. Please use the chart above as a reference to determine panel compatibility.

For more information, please contact your local sales representative or contact Continental Access at (631) 842-9400.

